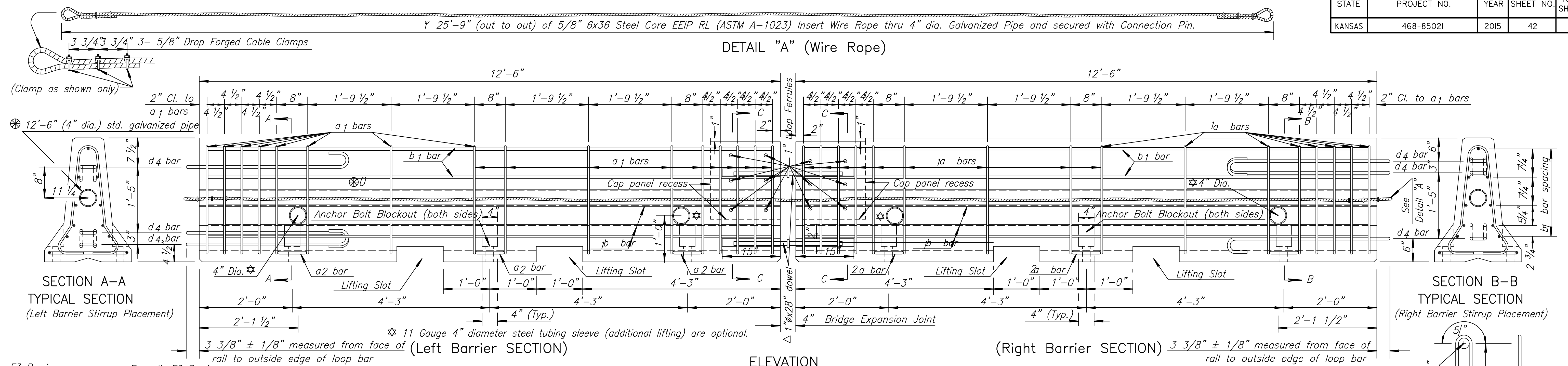


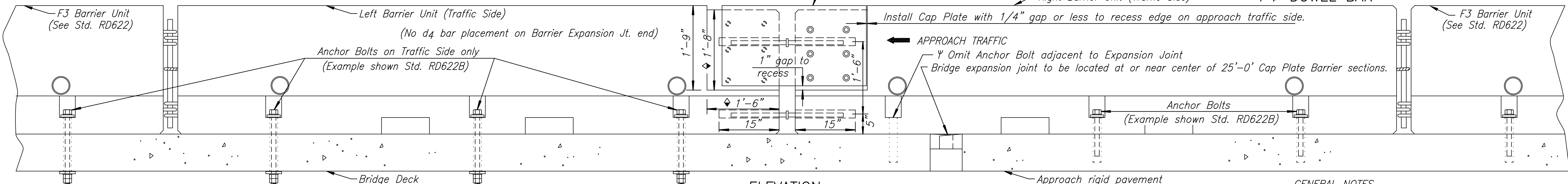
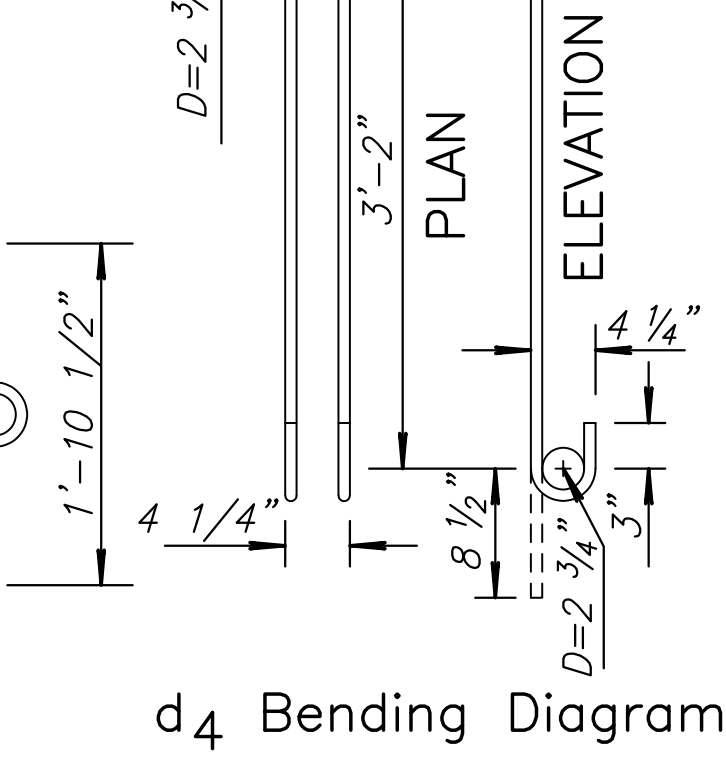
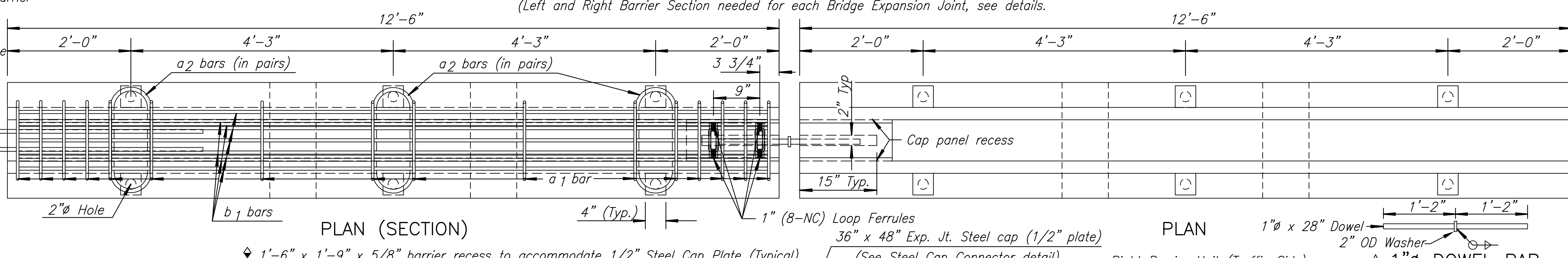
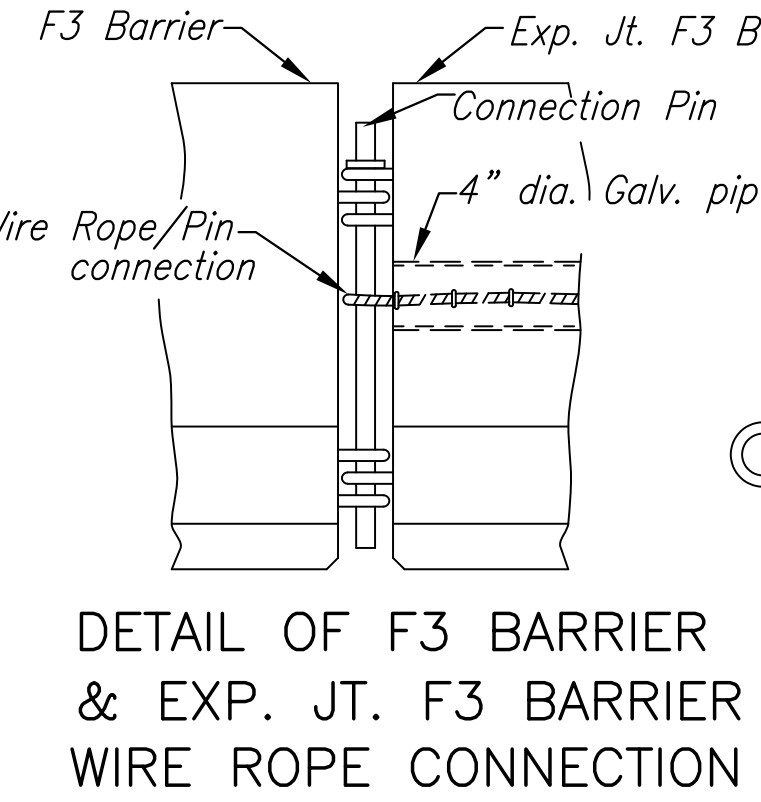
STATE	PROJECT NO.	YEAR	SHEET NO.	TOTAL SHEETS
KANSAS	468-8502I	2015	42	51

Ψ 25'-9" (out to out) of 5/8" 6x36 Steel Core EEIP RL (ASTM A-1023) Insert Wire Rope thru 4" dia. Galvanized Pipe and secured with Connection Pin.

DETAIL "A" (Wire Rope)



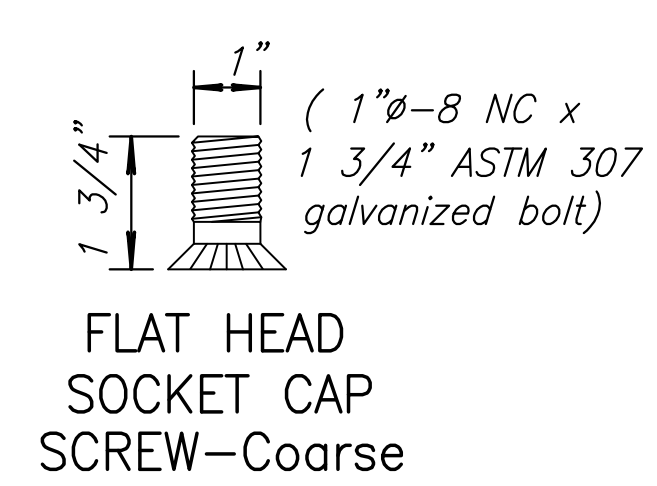
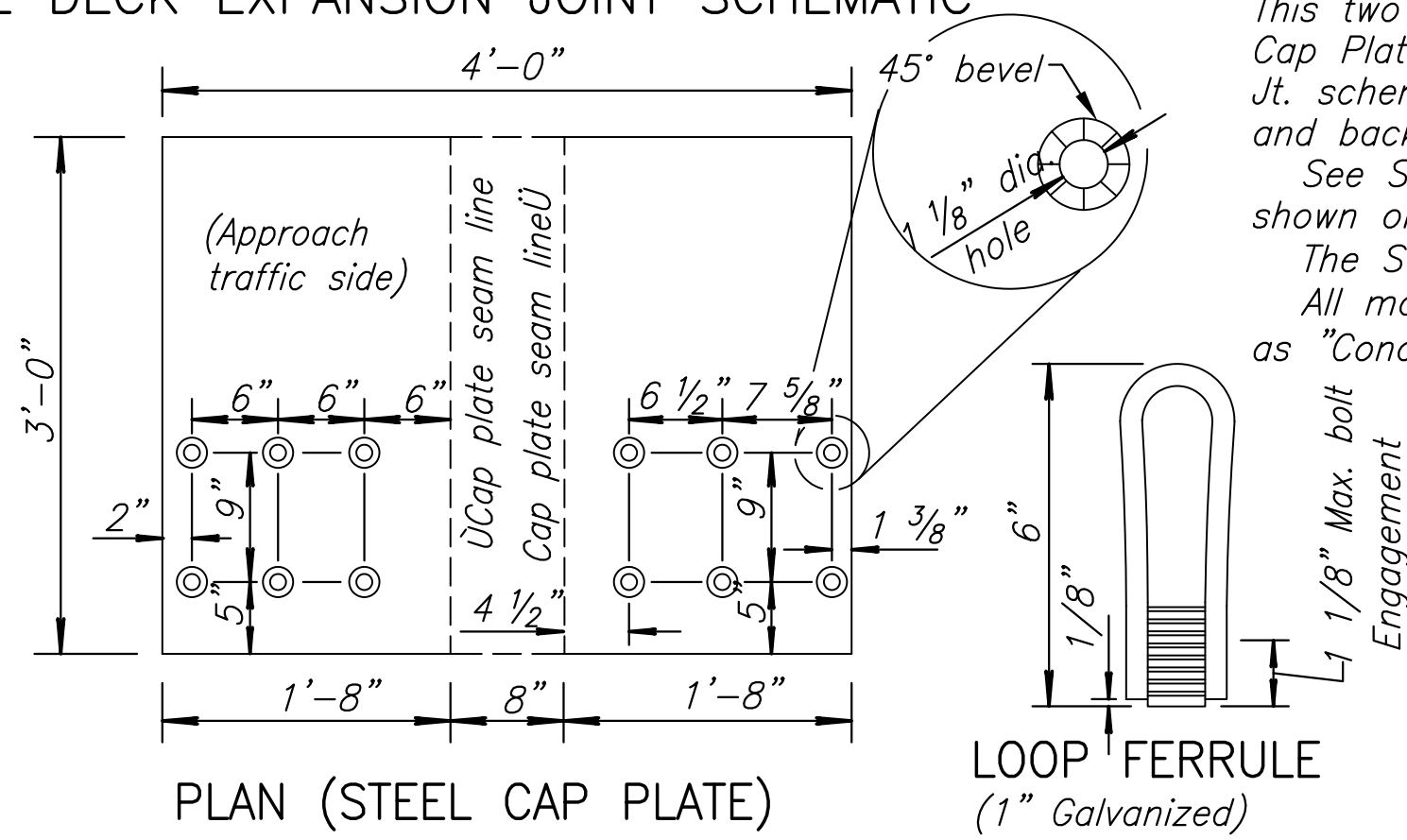
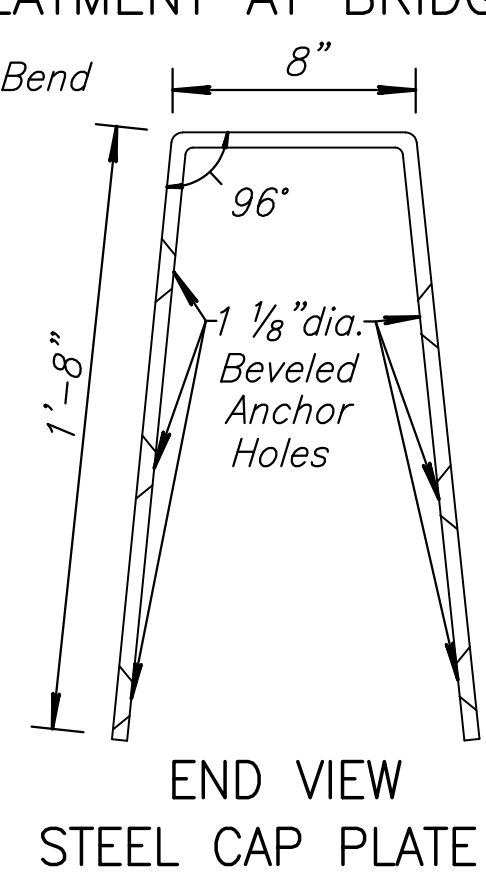
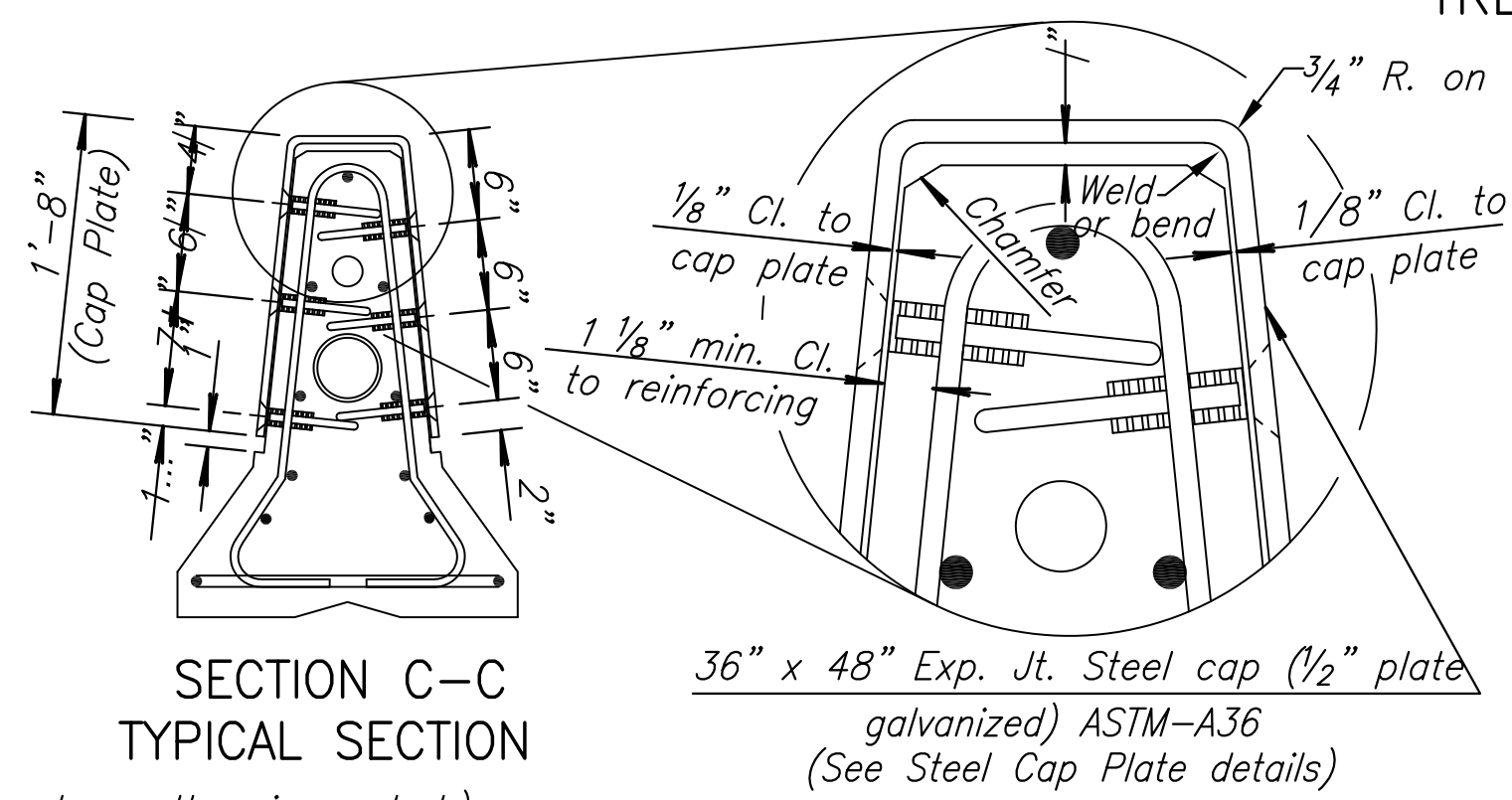
ELEVATION



Per 12'-6" Barrier Section

Bar	Bar Size	Shape	No. of Bars	Length Ft.	Weight Lbs.
a ₁	#4	U	16	6'-0"	64.1
a ₂	#6	C	6	2'-11"	26.3
b ₁	#5	—	9	12'-2"	114.2
LOOP ASSEMBLY					
d ₄	#6	—	3	8'-2"	36.8
1/2" Structural Steel Cap Plate 201.3					

Concrete Quantity = 1.3 C.Y.
(Dimensions are out to out of bars unless otherwise noted.)
Reinf., Struct. and Concrete quantities are for "Information Only".



NO.	DATE	Chg. flat head screw & ferrule to 1"Ø	REVISIONS	S.W.K.	J.O.B.
3	7-26-07				
KANSAS DEPARTMENT OF TRANSPORTATION					
TEMPORARY CONCRETE SAFETY BARRIER TYPE F3 ANCHORAGE at EXPANSION JT.					
RD622C					
FHWA APPROVAL	10-05-07	APP'D. James O. Brewer	QUANTITIES	TRACED	B.N.B.
DESIGNED J.P.J.	DETAILED	QUANTITIES	QUAN.CK.	TRACE	CK. S.W.K.
DESIGN CK.	DETAIL CK.	QUAN.CK.	QUAN.CK.	TRACE	CK. S.W.K.