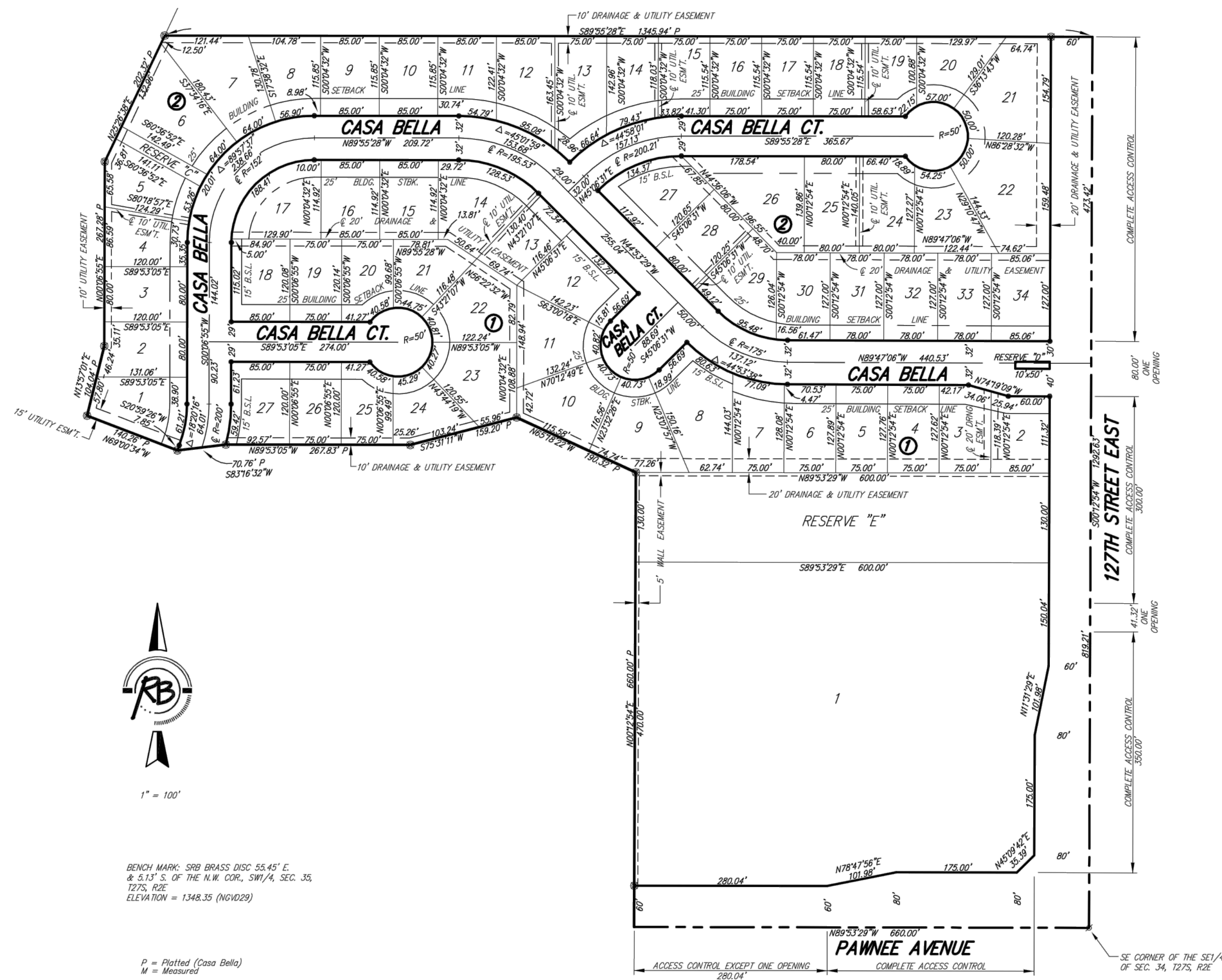


# CASA BELLA SECOND ADDITION

## Wichita, Sedgwick County, Kansas



BENCH MARK: SRB BRASS DISC 55.45' E. & 5.13' S. OF THE N.W. COR., SW1/4, SEC. 35, T27S, R2E. ELEVATION = 1348.35 (NGVD29)

P = Platted (Casa Bella)  
M = Measured

- SURVEY MARKER LEGEND**
- . . . . . PK NAIL IN CONCRETE (FOUND - ORIGIN UNKNOWN)
  - . . . . . 1/2" IRON PIPE (FOUND - ORIGIN UNKNOWN)
  - . . . . . 3/4" IRON PIPE (FOUND - ORIGIN UNKNOWN)
  - ⊕ . . . . . 5/8" REBAR W/GARBUR CAP (FOUND)
  - ⊕ . . . . . 1" BAR (FOUND - ORIGIN UNKNOWN)
  - ⊕ . . . . . 5/8" REBAR W/SRB CAP (FOUND)
  - ⊕ . . . . . 5/8" REBAR W/RAB CAP (FOUND)
  - ⊕ . . . . . 5/8" REBAR W/RAB CAP (SET)

BLOCK	LOT NO.	ELEVATION (NGVD29)
2	1, 2, 3, 4, 5, 6, 7	1345.4
3	10, 11, 12	1345.4
3	1, 2, 3, 4, 5, 6, 7, 8, 9	1339.4
6	1, 2, 3, 4, 5	1336.8

SHEET 1 OF 2

State of Kansas) SS  
Sedgwick County)

We, Ruggles & Bohm, P.A., Land Surveyors in aforesaid county and state, do hereby certify that, under the supervision of the undersigned, we have surveyed and platted "CASA BELLA SECOND ADDITION", Wichita, Sedgwick County, Kansas, and that the accompanying plat is a true and correct exhibit of the property surveyed, described as follows:

**LEGAL DESCRIPTION:**  
The SE1/4 of Section 34, T27S, R2E of the 6th P.M., Sedgwick County, Kansas, EXCEPT the NE1/4 of said SE1/4, AND EXCEPT that portion platted as Casa Bella, Wichita, Sedgwick County, Kansas.

All public easements and dedications are hereby vacated by virtue of K.S.A. 12-512(b).

Ruggles & Bohm, P.A.

\_\_\_\_\_  
Thomas C. Ruggles  
Land Surveyor

Know all men by these presents that we, the undersigned, have caused the land described in the surveyor's certificate to be platted into Lots, Blocks, Reserves and Streets, to be known as "CASA BELLA SECOND ADDITION", Wichita, Sedgwick County, Kansas. Utility easements are hereby granted for the construction and maintenance of all public utilities. Drainage easements are hereby granted to the public as indicated for drainage purposes. Reserves "A" and "B" are hereby reserved for irrigation, lighting, landscaping, gazebos, playground, structures, picnic areas/tables with canopies, and utilities confined to easements. Reserve "C" is hereby reserved for irrigation, walls, signage, gazebos, playground structures, picnic areas/tables with canopies, walks, lighting, landscaping, berms, lakes, drainage, drainage structures, and utilities confined to easements. Reserve "D" is hereby reserved for irrigation and entry features. Reserve "E" is hereby reserved for irrigation, walls, signage, lighting, landscaping, lakes, drainage, drainage structures, and utilities confined to easements. The Reserves shall be owned and maintained by the Home Owners Association for the addition. The streets are hereby dedicated to and for the use of the public. Access Controls as indicated are hereby granted to the appropriate governing body. A drainage plan has been developed for this plat; all drainage easements and reserves shall remain at established grades, or as modified with the approval of the City Engineer, and unobstructed to allow for the conveyance of storm water.

Tara Development Inc.

\_\_\_\_\_  
Eugene Vitarelli  
President

State of Kansas) SS  
Sedgwick County)

The foregoing instrument acknowledged before me, this \_\_\_\_\_ day of \_\_\_\_\_, 2008, by Eugene Vitarelli, President of Tara Development Inc., on behalf of the corporation.

\_\_\_\_\_  
Mildred E. Franz  
Notary Public

My appointment expires \_\_\_\_\_

We the undersigned, holders of a mortgage on a portion of the above described property, do hereby consent to this plat of "CASA BELLA SECOND ADDITION" Wichita, Sedgwick County, Kansas.

Commerce Bank, N.A.

\_\_\_\_\_  
Collin Stieben  
Assistant Vice President

State of Kansas) SS  
Sedgwick County)

The foregoing instrument acknowledged before me this \_\_\_\_\_ day of \_\_\_\_\_, 2008, by Collin Stieben, Assistant Vice President of Commerce Bank, N.A., on behalf of the Bank.

\_\_\_\_\_  
Notary Public

My appointment expires \_\_\_\_\_

This plat of "CASA BELLA SECOND ADDITION", Wichita, Sedgwick County, Kansas, has been submitted to and approved by the Wichita-Sedgwick County Metropolitan Area Planning Commission, Wichita, Kansas.

Dated this \_\_\_\_\_ day of \_\_\_\_\_, 2008.  
Wichita-Sedgwick County Metropolitan Area Planning Commission

\_\_\_\_\_  
Chairman

\_\_\_\_\_  
Secretary

This plat approved and all dedications shown hereon accepted by the City Council of the City of Wichita, Kansas, this \_\_\_\_\_ day of \_\_\_\_\_, 2008.

At the Direction of the City Council

\_\_\_\_\_  
Mayor

\_\_\_\_\_  
City Clerk

Reviewed in accordance with K.S.A. 58-2005 on this \_\_\_\_\_ day of \_\_\_\_\_, 2008.

\_\_\_\_\_  
Deputy County Surveyor  
Sedgwick County Kansas

Entered on transfer record this \_\_\_\_\_ day of \_\_\_\_\_, 2008.

\_\_\_\_\_  
County Clerk

State of Kansas) SS  
Sedgwick County)

This is to certify that this plat has been filed for record in the office of the Register of Deeds, this \_\_\_\_\_ day of \_\_\_\_\_, 2008, at \_\_\_\_\_ o'clock \_\_\_\_\_ M., and is duly recorded.

\_\_\_\_\_  
Register of Deeds

\_\_\_\_\_  
Deputy



**Ruggles & Bohm, P.A.**  
Engineering, Surveying, Land Planning  
924 North Main (316) 264-8008  
Wichita, Kansas 67203 (316) 264-4621 fax  
www.rbkans.com E-mail: info@rbkans.com

DWG FILE: SURVEY BASE  
PROJECT NO. 3253P  
JULY 24, 2008