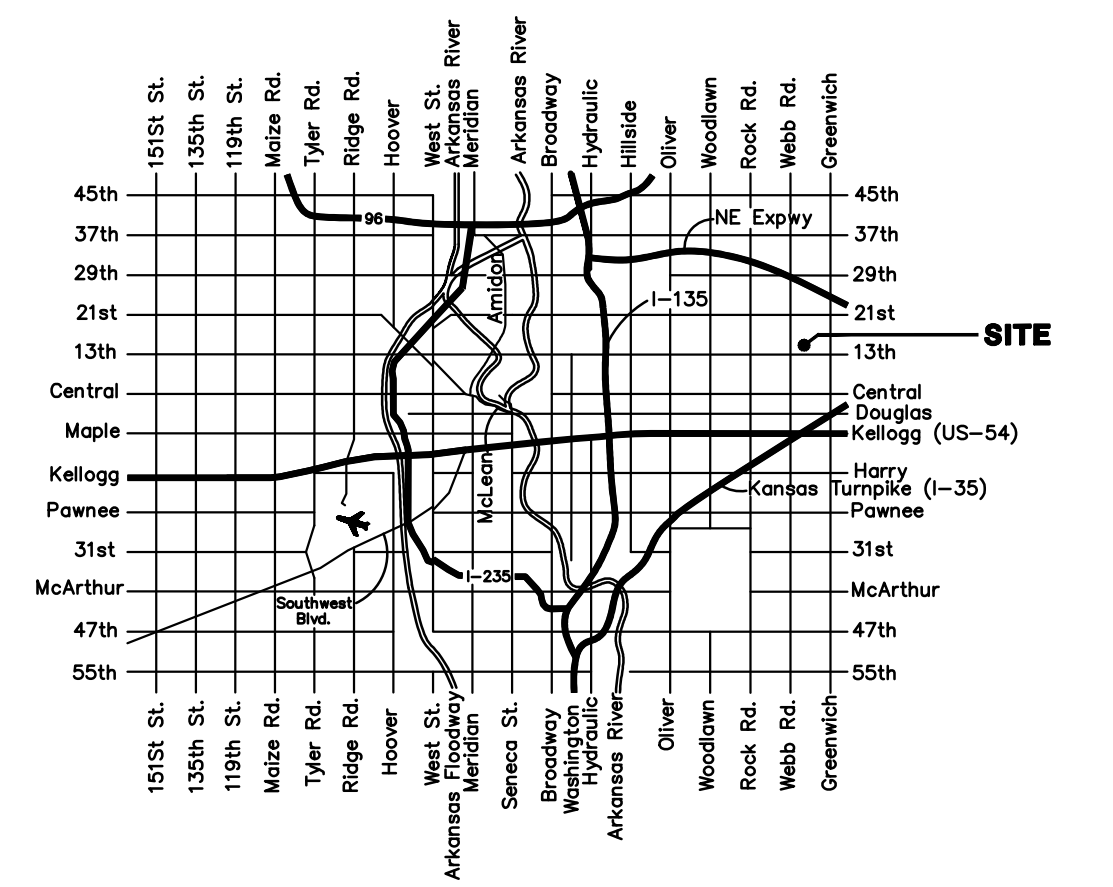
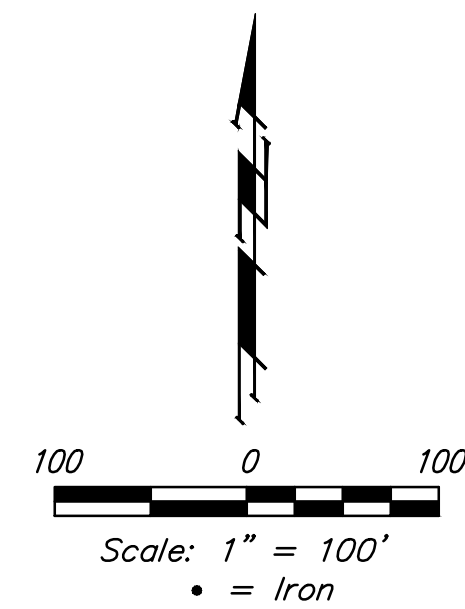


# PUBLIC STREET LIGHTING to serve THE WATERFRONT 7TH ADDITION CITY OF WICHITA, KANSAS

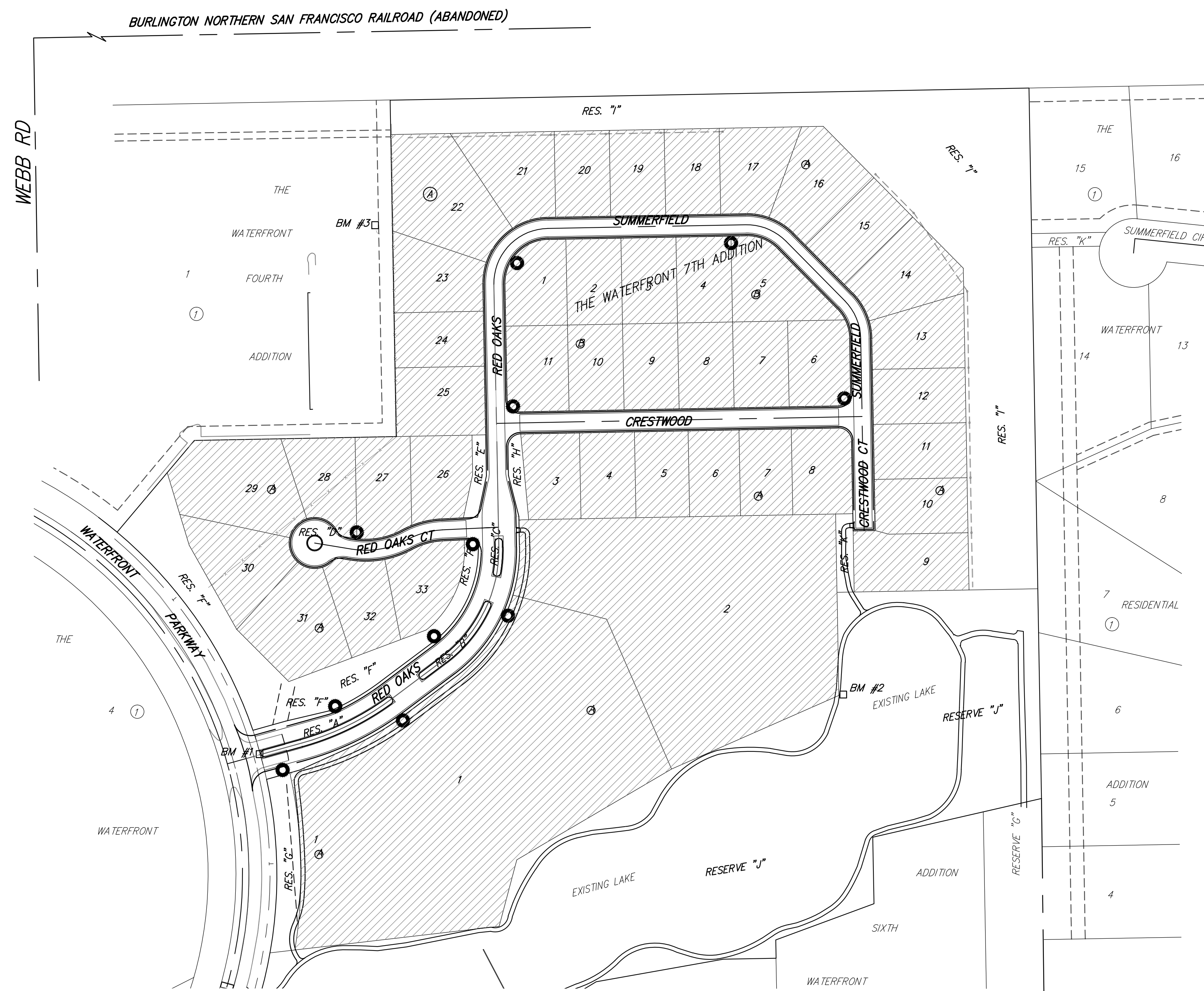
Gary Janzen, P.E. City Engineer

Project Number 472 - 85191

O.C.A. Number 766327



VICINITY MAP



Benefit District Proposed Light Poles

13TH ST N

## GENERAL NOTES:

- Contractor will be required to provide notice to utility companies a minimum of forty-eight (48) hours prior to any excavation, as follows:  
Kansas One-Call 687-2470  
The Contractor must notify the following in case of an emergency:  
Cox Communications 262-4270  
Kansas Gas Service 1-888-482-4950  
Westar Energy 383-8650  
Aquila Energy 1-800-303-0357  
ATT 268-2245  
City of Wichita Water Dept. 268-4563  
City of Wichita Sewer Maint. 268-4024  
City of Wichita Storm Sewer Maint. 268-4090  
City of Wichita Traffic Maint. 268-4034  
Conoco Phillips Pipeline Co. 1-877-267-2290  
Southern Star Pipeline Co. 529-6600  
Kinder-Morgan Pipeline Co. 1-888-844-5658
- Utility service lines, poles, valve boxes, meters, and etcetera are to be adjusted as necessary by others prior to construction unless the plans specifically call for their adjustment by the Contractor or unless the plans specifically identify a utility to be adjusted by its owner during construction. Existing utilities and their location, as shown on the plans, represent the best information obtainable for design. The Contractor will be required to work around existing utilities within the right-of-way which do not conflict with proposed construction.
- Rubble from the removal of miscellaneous structures and excess excavation which is to be wasted shall be disposed of on sites to be provided by the Contractor. These sites shall be approved by the Engineer as to suitability, appearance and site location. Locations, in the opinion of the Engineer, that will leave an unsightly appearance will not be approved. All disposal sites must be approved by the Kansas Department of Health and Environment. Material either stockpiled or disposed of in a flood plain would require a Kansas State Board of Agriculture permit. Any material dumped in waters of the United States or wetlands is subject to U.S. Corps. of Engineers permitting regulations. Any material buried or stockpiled beyond approved construction limits would require additional archaeological investigations unless buried in a previously approved borrow location.
- Trees and shrubs in public right-of-way which are in direct conflict with proposed new construction shall be removed by the Contractor ONLY with the Developer or Baughman Company approval. Trees and shrubs which are not in direct conflict with proposed new construction shall be saved and protected from damage.
- The Contractor shall give all property owners and/or tenants of developed property abutting the construction of this project a minimum of ten (10) days notice prior to start of construction.
- The Contractor shall be responsible for preserving property irons. The Contractor will be required to re-establish any property irons which are damaged or destroyed by his construction operations. Such irons shall be re-established by a licensed Land Surveyor in accordance with state laws.
- All existing and proposed erosion control measures including silt fencing, erosion control mat, straw bales, inlet barriers, and const. entrance shall be maintained throughout construction by the Contractor and until project is accepted by the City of Wichita. The on-site Engineer shall complete weekly reports on the status of erosion control measures. The Contractor shall be required to comply with maintenance and/or replacement of erosion control measures as determined by the on-site Engineer until project is accepted by City of Wichita. Contractor shall be required to remove and replace existing erosion control as necessary for construction.
- All areas disturbed during construction shall be seeded as noted on the Erosion Control Plan. Contractor shall prepare ground per City of Wichita Specifications. All costs associated with seeding shall be included in bid item "Seeding".
- Excess excavation shall be stockpiled or spread on-site at a location determined by the Developer or Design Engineer.
- The contractor will be required to provide submittals for approval by City of Wichita, project engineer, and developer prior to construction.
- The intent of this design is to match the existing light poles, fixtures, bulbs, decorative arms, decorative base, etc. as currently exists along the adjacent Waterfront Parkway.
- The light pole locations as shown are approximate. At time of construction, an on site meeting including the contractor, developer, design engineer, field engineer will take place to determine final pole location.
- The Developer for this project is Charlie Stevens and may be reached at (316) 636-2100.
- During construction, an as-built survey will be performed by the City of Wichita to locate the light poles and wiring locations at 25' intervals along the conduit/wiring. The as-built coordinate locations shall be provided to Baughman Company P.A. to produce an as-built drawing for future locating of underground wiring.
- The street paving project is planned to be complete prior to lighting construction. Lighting contractor shall assume all proposed pavement will be existing and plan to drill/bore conduit as needed for street crossings. See Sheet 5 for locations of existing 6" PVC conduits crossing Red Oaks. Contractor may install lighting conduit/wiring within the existing 6" PVC conduits.
- All costs for material, work, and incidentals to install the light poles, fixtures, bulbs, decorative arms, decorative concrete base, conduit, wiring, controller, pedestal and meter, connection to Westar transformer, and all other items not listed to complete the lighting project shall be included in the lump sum bid item, "Street Lighting."

## BENCHMARKS

- BM #1:  
"□" Chiseled on Top of Curb.  
West End of South Median Curb  
within Castewood  
Elevation = 1380.50 (NAVD 88)
- BM #2  
"X" Chiseled on Back of Walk.  
Near the Southeast corner of  
Lot 2, Block A, The Waterfront  
7th Addition  
Elevation = 1381.88 (NAVD 88)
- BM #3  
"□" Chiseled on Back of Walk.  
Northeast corner of parking lot  
within Lot 1, Block 1, The  
Waterfront 4th Addition  
Elevation = 1389.50 (NAVD 88)

## SHEET INDEX

Title Sheet	1
Electrical Schedules & Details	2-3
Lighting Plan	4
Erosion Control Plan/Seeding	5
Erosion Control Details	6-9
Coordinate Sheet	10
Copy of Plat	11-12



Baughman Company, P.A. 315 Ellis St. Wichita, KS 67211 P 316-262-7271 F 316-262-0149  
ENGINEERING | SURVEYING | PLANNING | LANDSCAPE ARCHITECTURE