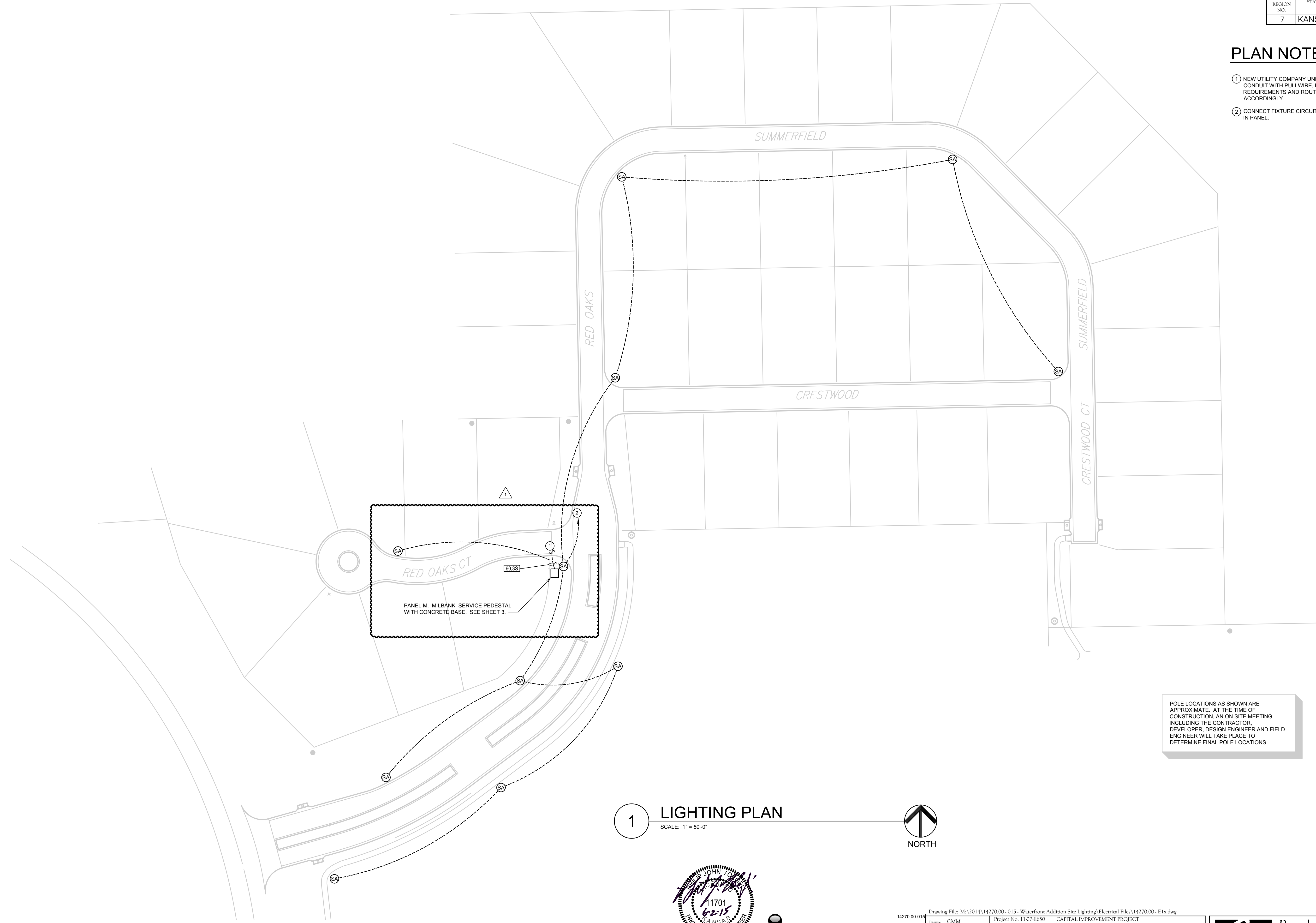


FHWA REGION NO.	STATE	PROJECT NO.	FISCAL YEAR	SHEET NO.	TOTAL SHEETS
7	KANSAS	87 N-XXXX-XX	2014		86

### PLAN NOTES

- ① NEW UTILITY COMPANY UNDERGROUND SECONDARY CONDUCTORS. PROVIDE CONDUIT WITH PULLWIRE, MINIMUM 36" BELOW GRADE. VERIFY ALL REQUIREMENTS AND ROUTING WITH WESTAR PRIOR TO BID. ADJUST ROUTING ACCORDINGLY.
- ② CONNECT FIXTURE CIRCUIT TO PANEL "M". PROVIDE 20/2 BREAKER AS REQUIRED IN PANEL.



POLE LOCATIONS AS SHOWN ARE APPROXIMATE. AT THE TIME OF CONSTRUCTION, AN ON SITE MEETING INCLUDING THE CONTRACTOR, DEVELOPER, DESIGN ENGINEER AND FIELD ENGINEER WILL TAKE PLACE TO DETERMINE FINAL POLE LOCATIONS.

## 1 LIGHTING PLAN

SCALE: 1" = 50'-0"

NORTH



**Integrated Consulting Engineers, Inc.**  
 349 South Hydraulic • Wichita, KS 67211  
 316.264.3588 • 316.264.3948 • www.icengineers.net

Drawing File: M:\2014\14270.00-015 - Waterfront Addition Site Lighting\Electrical Files\14270.00 - E1x.dwg  
 Project No: 1107-E650 CAPITAL IMPROVEMENT PROJECT  
 Design: CMM  
 Drawn: CMM  
 Approved: PJV  
 Scale: NOTED

### WATERFRONT ADDITION SITE LIGHTING ELECTRICAL SCHEDULES & DETAILS

**Baughman Company, P.A.**  
 315 Ellis St. Wichita, KS 67211 P 316-263-7271 F 316-262-0149  
 ENGINEERING | SURVEYING | PLANNING | LANDSCAPE ARCHITECTURE