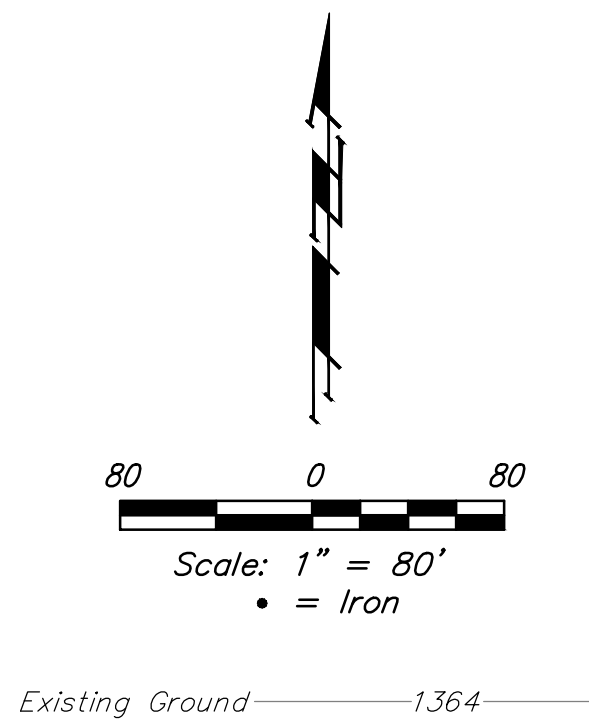
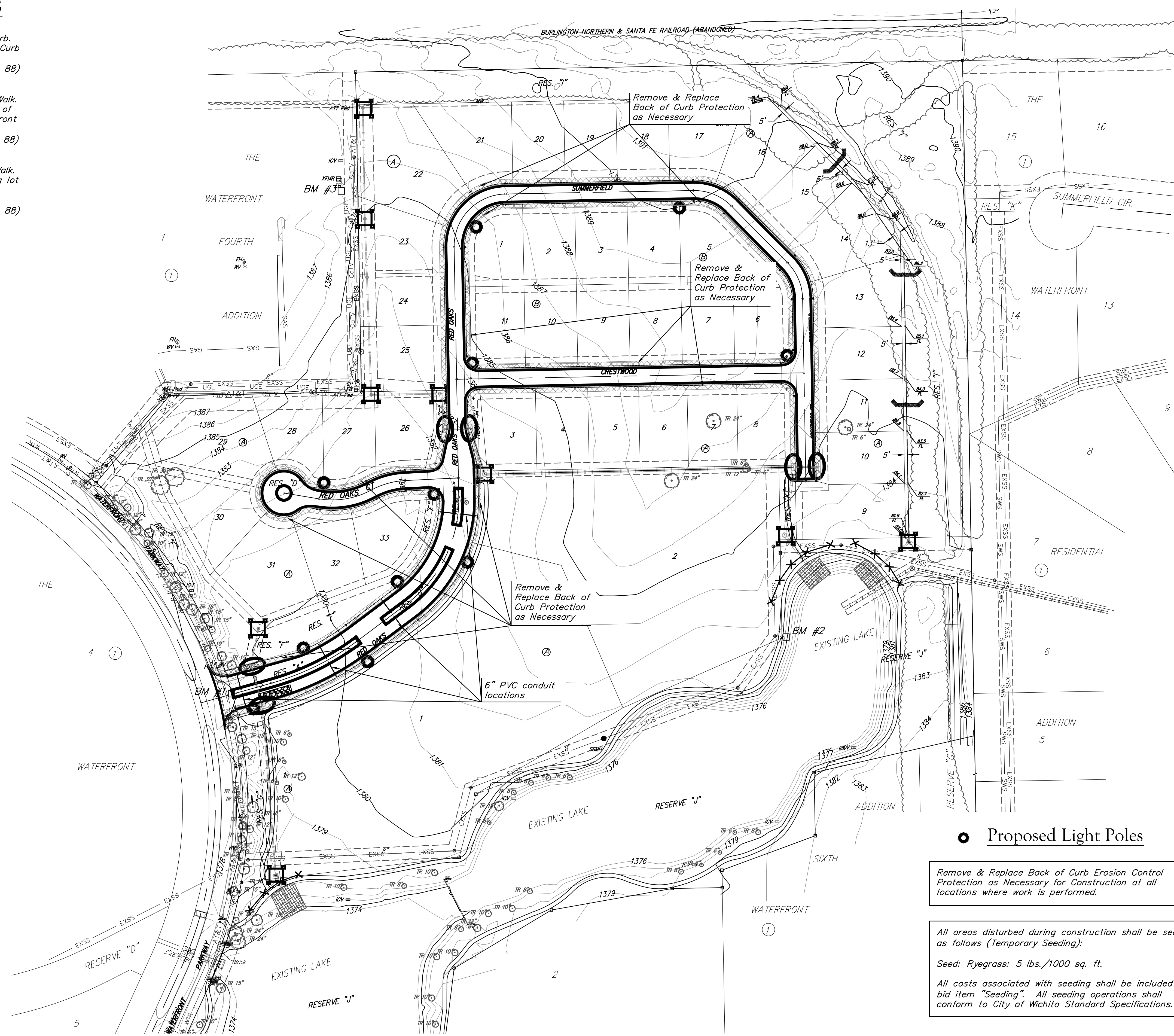


# BENCHMARKS

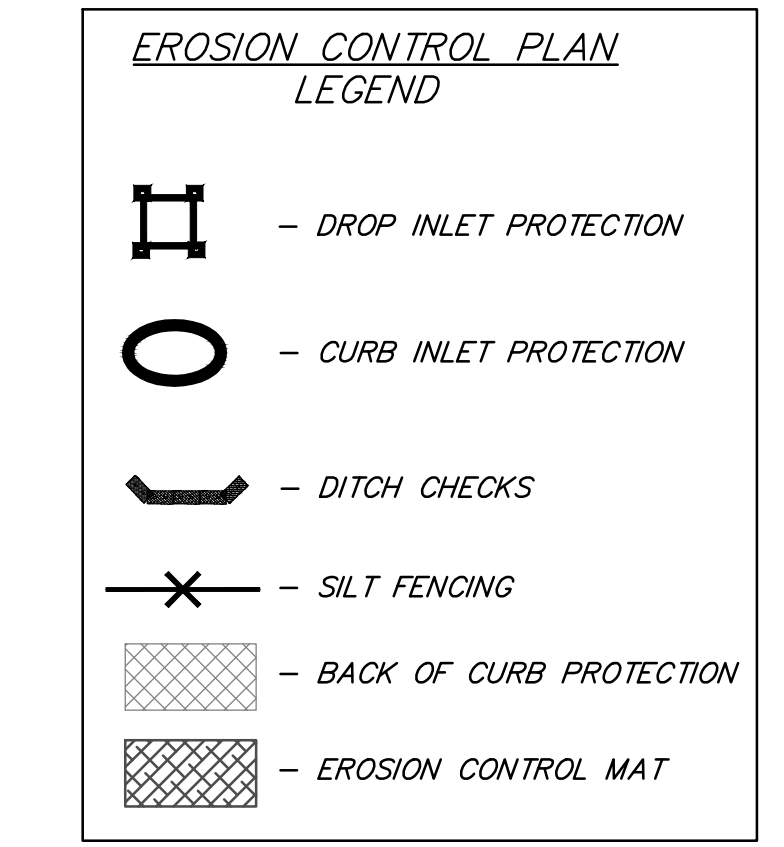
BM #1:  
 "□" Chiseled on Top of Curb.  
 West End of South Median Curb  
 within Castlewood  
 Elevation = 1380.50 (NAVD 88)

BM #2  
 "X" Chiseled on Back of Walk.  
 Near the Southeast corner of  
 Lot 2, Block A, The Waterfront  
 7th Addition  
 Elevation = 1381.88 (NAVD 88)

BM #3  
 "□" Chiseled on Back of Walk.  
 Northeast corner of parking lot  
 within Lot 1, Block 1, The  
 Waterfront 4th Addition  
 Elevation = 1389.50 (NAVD 88)



**NOTES:**  
 Contractor shall make sure all erosion control is in place before project is accepted. This plan represents the minimum standard. Any additional erosion control measures shall be installed by the Contractor as needed.  
 All areas disturbed during construction shall be seeded, mulched, and fertilized as noted on this sheet.



EROSION CONTROL MEASURE	INSTALL	MAINTAIN	REMOVE
BACK OF CURB PROTECTION (LF)	0	0	0
CONSTRUCTION ENTRANCE (EA)	0	0	0
CURB INLET BARRIER (EA)	0	0	0
DITCH CHECK (EA)	0	0	0
DROP INLET PROTECTION (EA)	0	0	0
EROSION CONTROL (LS)	0	0	0
EROSION CONTROL BERM (LF)	0	0	0
SILT FENCE (LF)	0	0	0
EROSION CONTROL MAT (SY)	0	0	0

Quantities are for information only; contractor shall verify quantities per final bid quantity sheet.  
 \* All existing BMPs including Construction Entrance, Sediment Barriers, Silt Fence, Cut-off Trench, and Erosion Control Mat shall be maintained and repaired if necessary. Replacement or removal of erosion control measures to be paid for by L.S. Bid item "Maintain Existing Erosion Control BMPs"

**Proposed Light Poles**  
 Remove & Replace Back of Curb Erosion Control Protection as Necessary for Construction at all locations where work is performed.

All areas disturbed during construction shall be seeded as follows (Temporary Seeding):  
 Seed: Ryegrass: 5 lbs./1000 sq. ft.  
 All costs associated with seeding shall be included in bid item "Seeding". All seeding operations shall conform to City of Wichita Standard Specifications.



**Baughman** The Waterfront 7th Addition  
**EROSION CONTROL**  
 Street Improvements

Baughman Company, P.A. 315 Ellis St. Wichita, KS 67211 P 316.262.2211 F 316.262.0149  
 ENGINEERING | SURVEYING | PLANNING | LANDSCAPE ARCHITECTURE

PROJECT NUMBER	DESIGN	DRAWN
	AEG	JAK
REVISIONS:	APPROVED	DATE
		11/14
	SCALE	Noted
	SHEET	5 OF 12