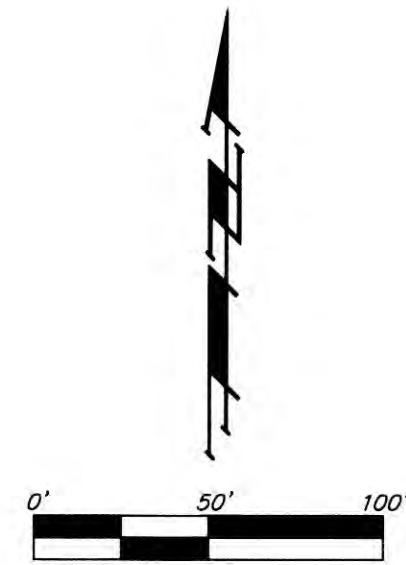


THE WATERFRONT SEVENTH ADDITION WICHITA, SEDGWICK COUNTY, KANSAS



- #4 REBAR W/ "DAUGHMAN" CAP (SET)
- #5 REBAR W/ "MKEC" CAP (FOUND)
- 3/4" IRON IN THIMBLE (FOUND)
- 1/2" IRON (FOUND)(ORIGIN UNKNOWN)
- ◇ #5 REBAR (FOUND)(ORIGIN UNKNOWN)
- △ #4 REBAR W/ "WING LSOB" CAP (FOUND)
- × CHISELED CROSS (FOUND)(ORIGIN UNKNOWN)
- ▽ #4 REBAR (FOUND)(ORIGIN UNKNOWN)
- ⊠ #5 REBAR W/ "R&B" CAP (FOUND)

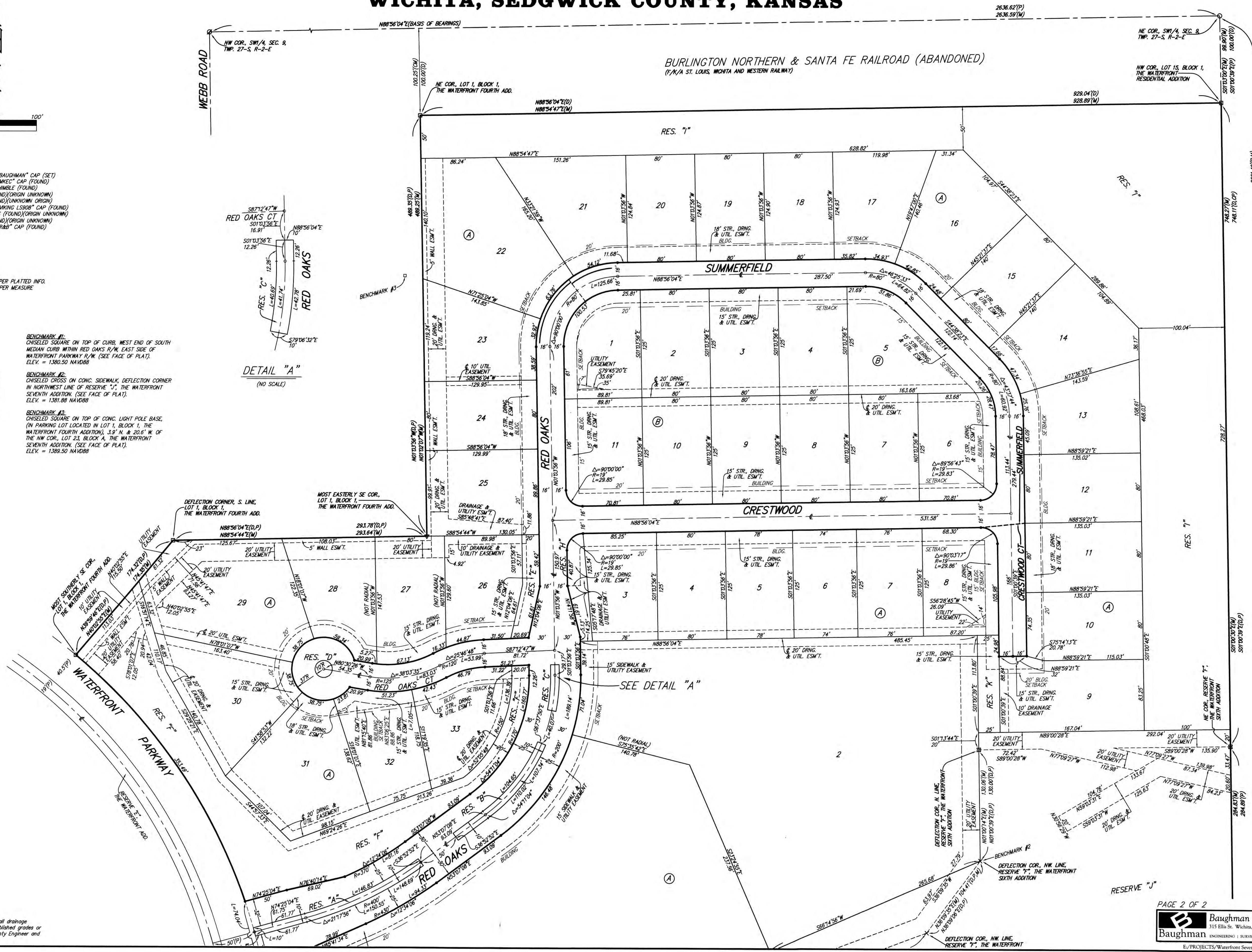
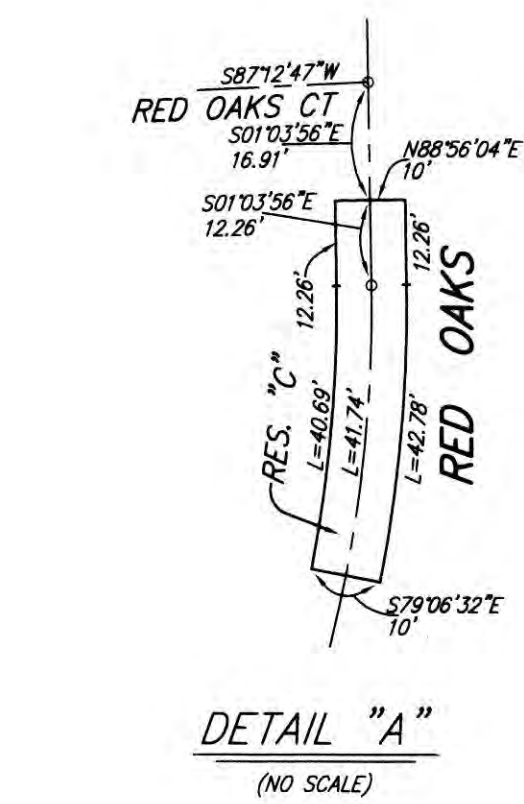
- (M) = MEASURED
- (D) = DESCRIBED
- (P) = PLATTED
- (CP) = CALCULATED PER PLATTED INFO.
- (CM) = CALCULATED PER MEASURE

BENCHMARK #1:
CHISELED SQUARE ON TOP OF CURB, WEST END OF SOUTH MEDIAN CURB WITHIN RED OAKS R/W, EAST SIDE OF WATERFRONT PARKWAY R/W. (SEE FACE OF PLAT).
ELEV. = 1380.50 NAVD88

BENCHMARK #2:
CHISELED CROSS ON CONC. SIDEWALK, DEFLECTION CORNER IN NORTHWEST LINE OF RESERVE "J", THE WATERFRONT SEVENTH ADDITION. (SEE FACE OF PLAT).
ELEV. = 1381.88 NAVD88

BENCHMARK #3:
CHISELED SQUARE ON TOP OF CONC. LIGHT POLE BASE, (IN PARKING LOT LOCATED IN LOT 1, BLOCK 1, THE WATERFRONT FOURTH ADDITION), 33' N. & 22.6' W. OF THE NW COR., LOT 23, BLOCK A, THE WATERFRONT SEVENTH ADDITION. (SEE FACE OF PLAT).
ELEV. = 1389.50 NAVD88

| MINIMUM BUILDING PAD ELEVATIONS FOR LOWEST OPENING TO THE STRUCTURES | | |
|--|-------|------------------|
| LOT | BLOCK | ELEVATION NAVD88 |
| 1, 2, 9 | A | 1381.0 |



NOTE:
A drainage plan has been developed for the plot and that all drainage easements, rights-of-way, or reserves shall remain at established grades or as modified with the approval of the applicable City or County Engineer and unobstructed to allow for the conveyance of stormwater.