

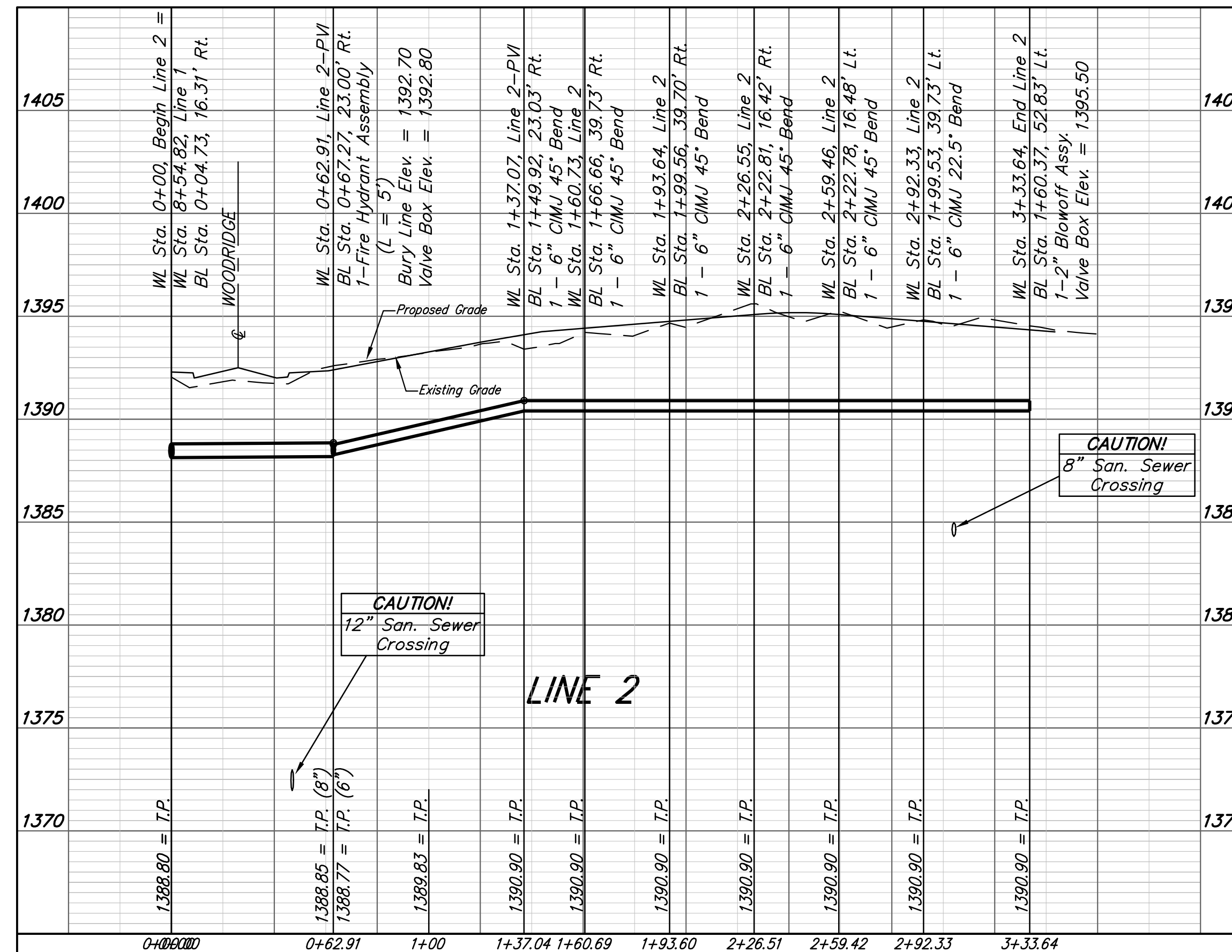
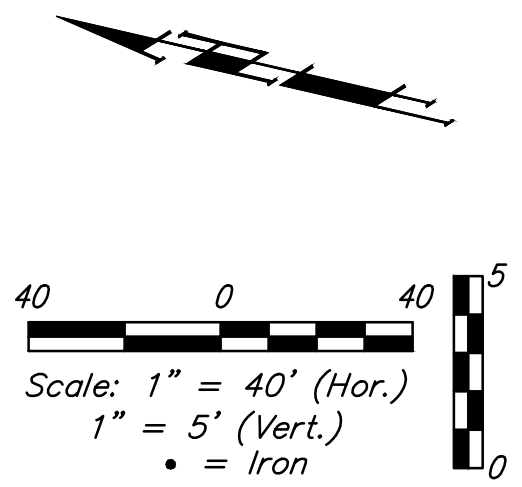
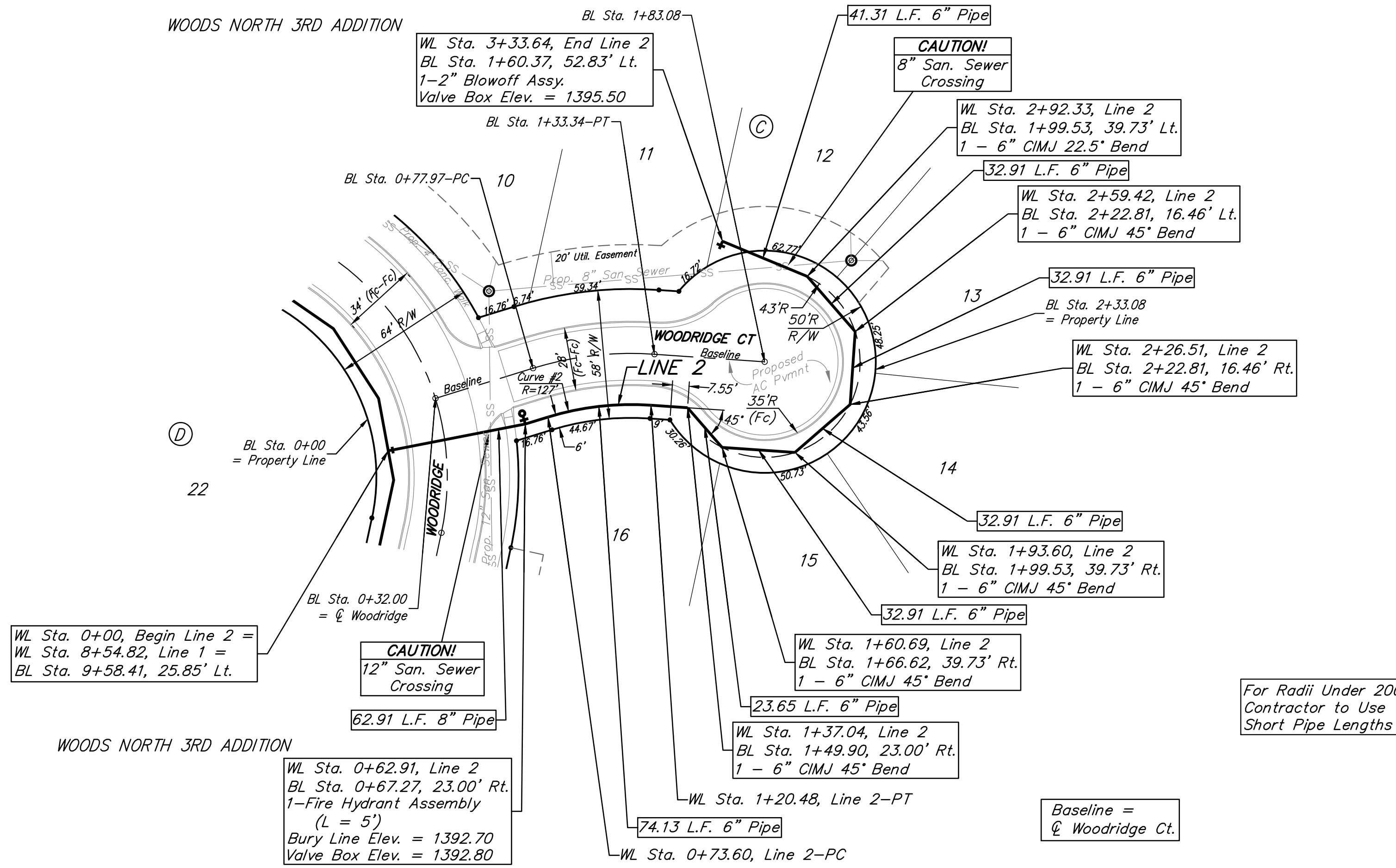
BENCHMARKS:


BM #1: "□" cut in top of curb near intersection of 27th Street North & Woodridge, south of SE corner of Lot 24, Block C, Woods North 3rd Addition.
Elev. = 1392.97 NAVD88

BM #2 Brass disc in top of curb adjacent to fire hydrant at the west end of the southwest curb return of 27th St. N. and 27th St. N. Ct.
Elev. = 1397.59 NAVD88

Curve #2
Curve Data Based on Centerline
Rad. = 127' Delta = 21°09'06" Tangent = 23.71'
Arc = 46.88' L.C. = 46.62' Def./Ft. = 13.53562 Min.

Station	Arc	Face Chord Lengths		Defl.	Total Defl.
		8' Left	8' Right		
0+73.60	-	-	-	0°00'00"	0°00'00"
0+75.00	1.40'	1.49'	1.31'	0°18'57"	0°18'57"
1+00.00	25.00'	26.53'	23.39'	5°38'23"	5°57'20"
1+20.48	20.48'	21.75'	19.17'	4°37'13"	10°34'33"





Baughman

Woods North 3rd Addition - Phase III
LINE 2
Water Distribution System

Baughman Company, P.A. 315 Ellis St. Wichita, KS 67211 P 316-262-7271 F 316-262-0149
ENGINEERING | SURVEYING | PLANNING | LANDSCAPE ARCHITECTURE

PROJECT NUMBER
448-90556

REVISIONS:

DESIGN
AEG

DRAWN
JAK

APPROVED
DATE
6/01/15

SCALE
Noted
SHEET

6 OF 14

