

FHWA REGION NO.	STATE	PROJECT NO.	YEAR	SHEET NO.	TOTAL SHEETS
7	KANSAS	54-87 K-4445-01	1996	5	73

(mark one) Government Corner Traverse Point Baseline Point Other CONTROL PT. #1

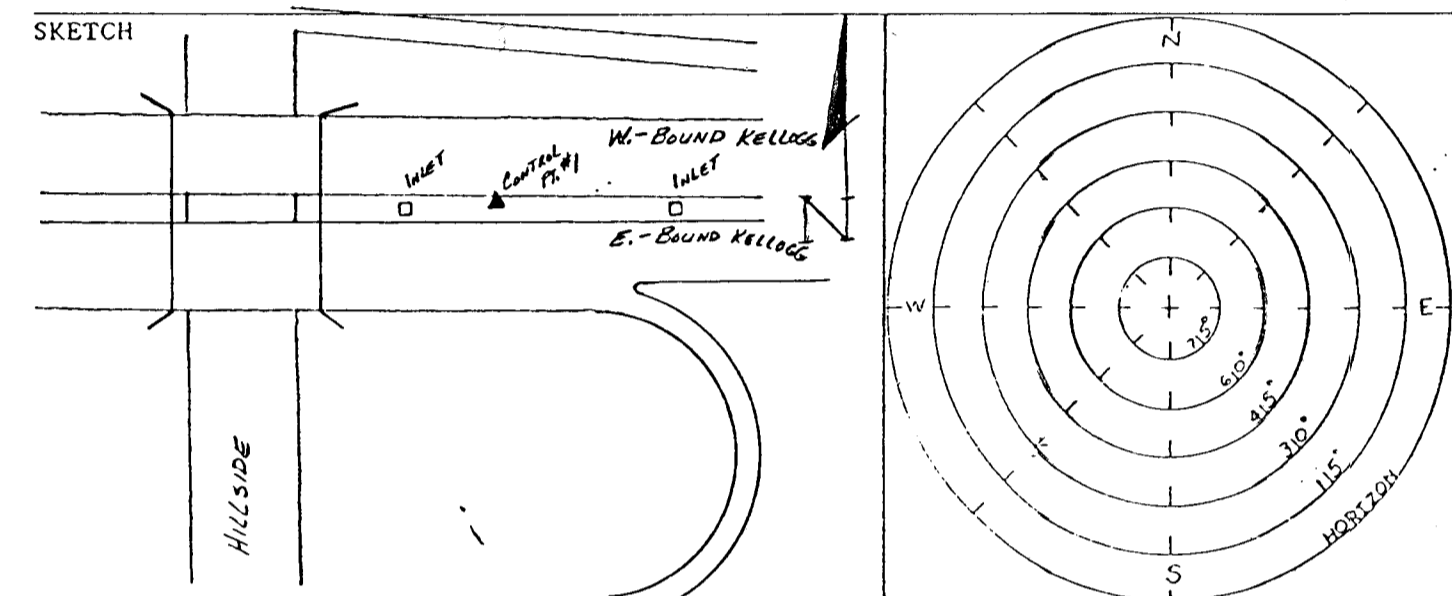
City WICHITA County SEDGWICK State KANSAS
 Section 23 Township 27S Range 1E 6th P.M.
 Monument Title SG 163 KDOT designation _____
 Project KELLOGG/OLIVER INTERCHANGE Date 2/4/92
 Party Chief SLW

Record monument description: NONE

Monument Description: Found Set (describe method if set)
24" LONG #4 REBAR WITH 2" ALUM. DISC STAMPED "SG163"

Reference Ties: RANDOM LOCATION SELECTION (INTERVARIABLE WITH CONTROL PT. #2 (SG164))

- | Description | (Dist.) | (Bearing) | Distance | Bearing |
|---|---------|-----------|----------|---------|
| 1. 59' N. TO CHIS. "4" ON T.O.C. ON N. SIDE KELLOGG | 59' | | | |
| 2. 71' S. TO CHIS. "4" ON T.O.C. ON S. SIDE KELLOGG @ APPROX. P.C. OF HILLSIDE EXIT RAMP | 71' | | | |
| 3. 135' E. TO CHIS. "4" ON STR. TOP N. WALL OF 2 ND STORM DRAIN AREA WEST E. OF HILLSIDE BR. | 135' | | | |
| 4. 43' W. TO CHIS. "4" ON STR. TOP N. WALL OF 1 ST STORM DRAIN AREA WEST E. OF HILLSIDE BR. | 43' | | | |



(mark one) Government Corner Traverse Point Baseline Point Other CONTROL PT. #4

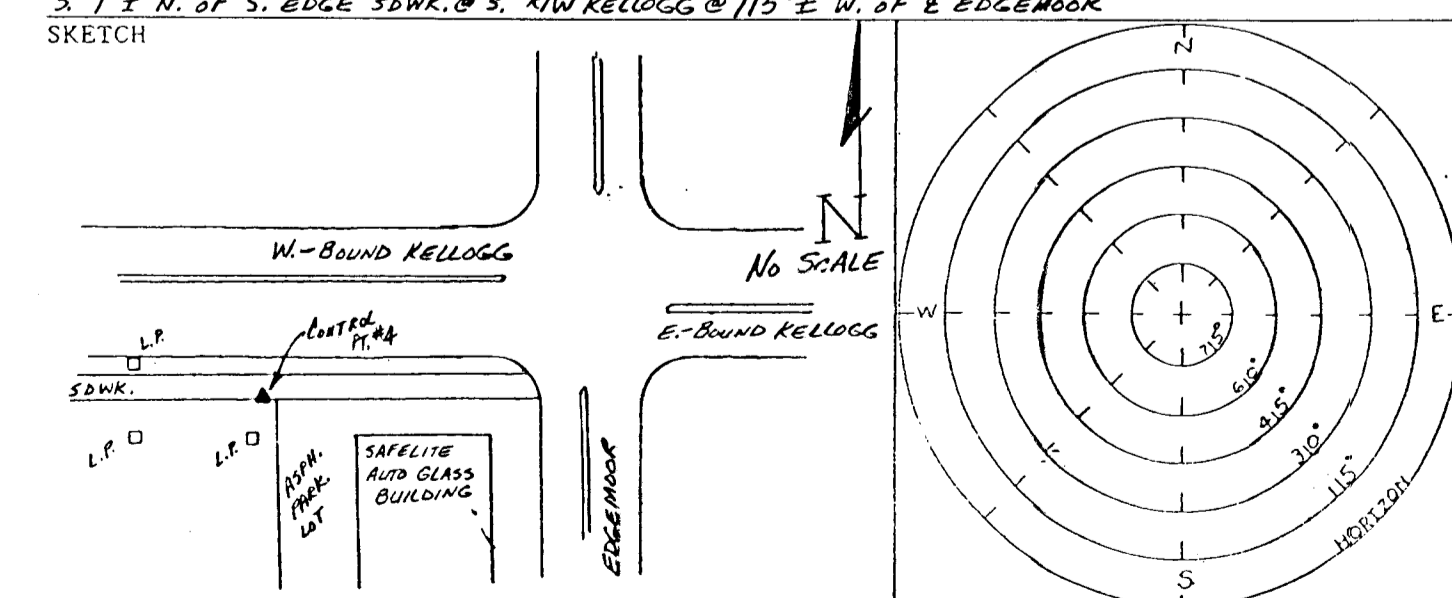
City WICHITA County SEDGWICK State KANSAS
 Section 25 Township 27S Range 1E 6th P.M.
 Monument Title SG 166 KDOT designation _____
 Project KELLOGG/OLIVER INTERCHANGE Date 2/4/92
 Party Chief SLW

Record monument description: NONE

Monument Description: Found Set (describe method if set)
24" LONG #4 REBAR WITH 2" ALUM. DISC STAMPED "SG166"

Reference Ties: RANDOM LOCATION SELECTION (INTERVARIABLE WITH CONTROL PT. #3 (SG165)) #5 (SG167)

- | Description | (Dist.) | (Bearing) | Distance | Bearing |
|---|---------|-----------|----------|---------|
| 1. 72' N. TO CHIS. "4" ON T.O.C. ON S. SIDE E-BOUND KELLOGG | 72' | | | |
| 2. 13' SSW TO CHIS. "4" ON TOP W. EDGE CONC. C.P. BASE 2" TALL | 13' | | | |
| 3. 44' WNW TO PK. N. 45' (11G.) IN N. FACE R.P. | 44' | | | |
| 4. 92' ESE TO FOUND CHIS. "4" IN SDWK. @ SW. COR. INTX. OF EDGEMORE & KELLOGG | 92' | | | |
| 5. 1' N. OF S. EDGE SDWK. @ S. RW KELLOGG @ 115' E. W. OF E. EDGEMORE | 1' | | | |



(mark one) Government Corner Traverse Point Baseline Point Other CONTROL PT. #2

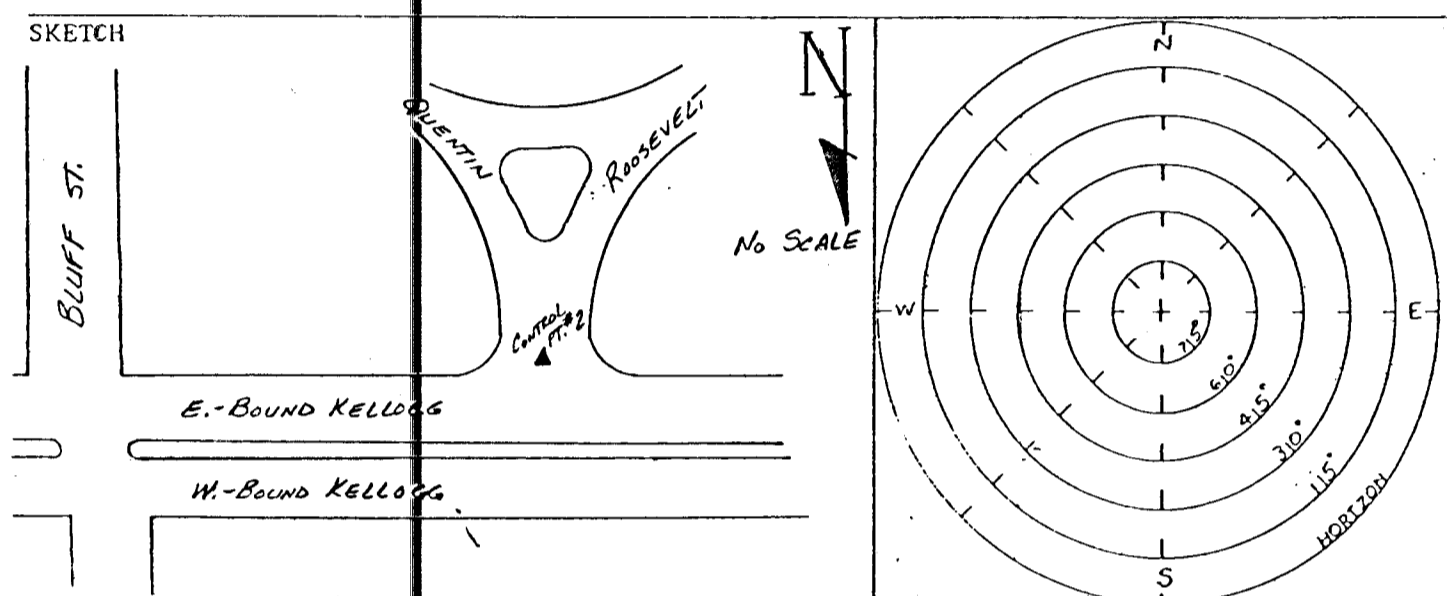
City WICHITA County SEDGWICK State KANSAS
 Section 26 Township 27S Range 1E 6th P.M.
 Monument Title SG 164 KDOT designation _____
 Project KELLOGG/OLIVER INTERCHANGE Date 2/4/92
 Party Chief SLW

Record monument description: NONE

Monument Description: Found Set (describe method if set)
2" ALUM. DISC STAMPED "SG164"

Reference Ties: RANDOM LOCATION SELECTION (INTERVARIABLE WITH CONTROL PT. #1 (SG163)) #3 (SG165)

- | Description | (Dist.) | (Bearing) | Distance | Bearing |
|--|---------|-----------|----------|---------|
| 1. 60' S. TO CHIS. "4" ON N. NOSE MEDIAN TRAFFIC ISLAND IN ROOSEVELT ST. | 60' | | | |
| 2. 24' ESE TO CHIS. "4" ON T.O.C. IN SE. COR. RD. INTX. OF ROOSEVELT & KELLOGG STREETS | 24' | | | |
| 3. 28' WSW TO CHIS. "4" ON T.O.C. IN SW. COR. RD. INTX. OF ROOSEVELT & KELLOGG STREETS | 28' | | | |
| 4. 21' N. TO PK. N. 45' ON N. EDGE DRIVING SURFACE OF E-BOUND KELLOGG | 21' | | | |



(mark one) Government Corner Traverse Point Baseline Point Other CONTROL PT. #5

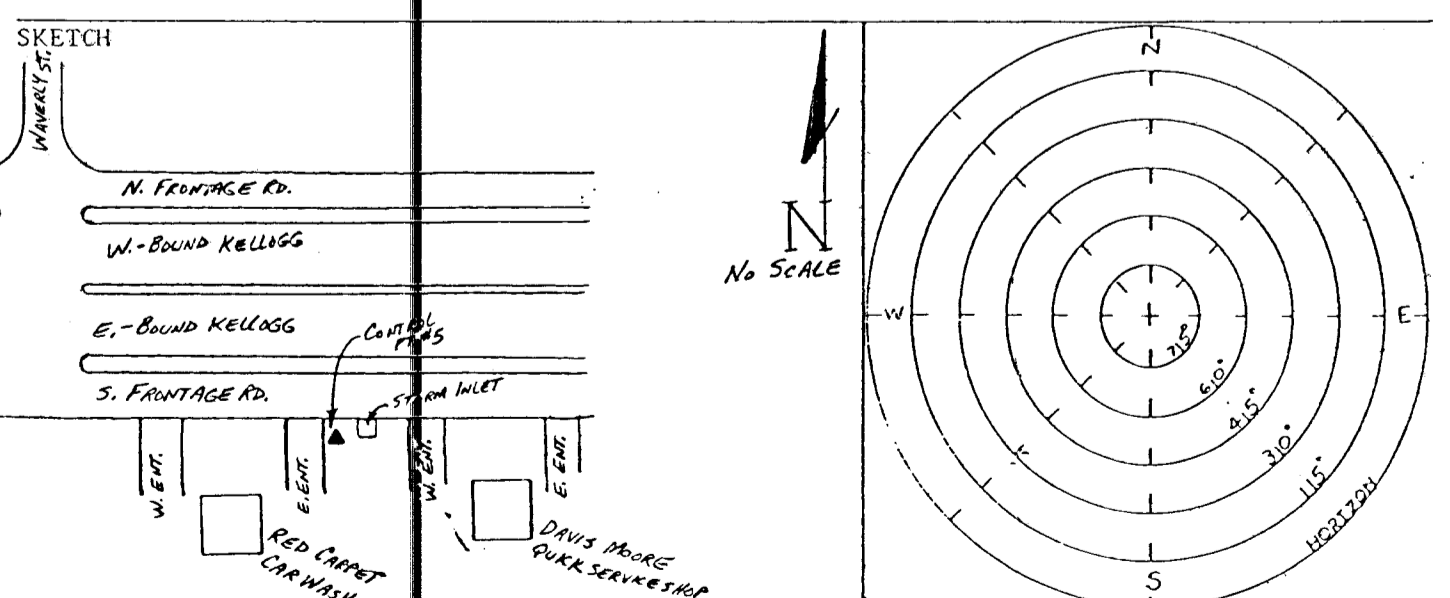
City WICHITA County SEDGWICK State KANSAS
 Section 24 Township 27S Range 1E 6th P.M.
 Monument Title SG 167 KDOT designation _____
 Project KELLOGG/OLIVER INTERCHANGE Date 2/4/92
 Party Chief SLW

Record monument description: NONE

Monument Description: Found Set (describe method if set)
24" LONG #4 REBAR WITH ALUM. DISC STAMPED "SG167"

Reference Ties: RANDOM LOCATION SELECTION (INTERVARIABLE WITH CONTROL PT. #4 (SG166))

- | Description | (Dist.) | (Bearing) | Distance | Bearing |
|--|---------|-----------|----------|---------|
| 1. 24' N. TO CHIS. "4" ON T.O.C. OF S. FRONTAGE RD. ON S. SIDE KELLOGG | 24' | | | |
| 2. 53' W TO CHIS. "4" ON T.O.C. OF S. FRONTAGE RD. ON S. SIDE KELLOGG BETWEEN ENTRANCES TO RED CARPET CAR WASH | 53' | | | |
| 3. 84' E. TO CHIS. "4" ON S. T.O.C. OF S. FRONTAGE RD. ON S. SIDE KELLOGG BETWEEN ENTRANCES TO RED CARPET CAR WASH | 84' | | | |
| 4. S. TO CHIS. "4" ON NW. COR. CONC. EXIT APRON FROM RED CARPET CAR WASH | | | | |



(mark one) Government Corner Traverse Point Baseline Point Other CONTROL PT. #3

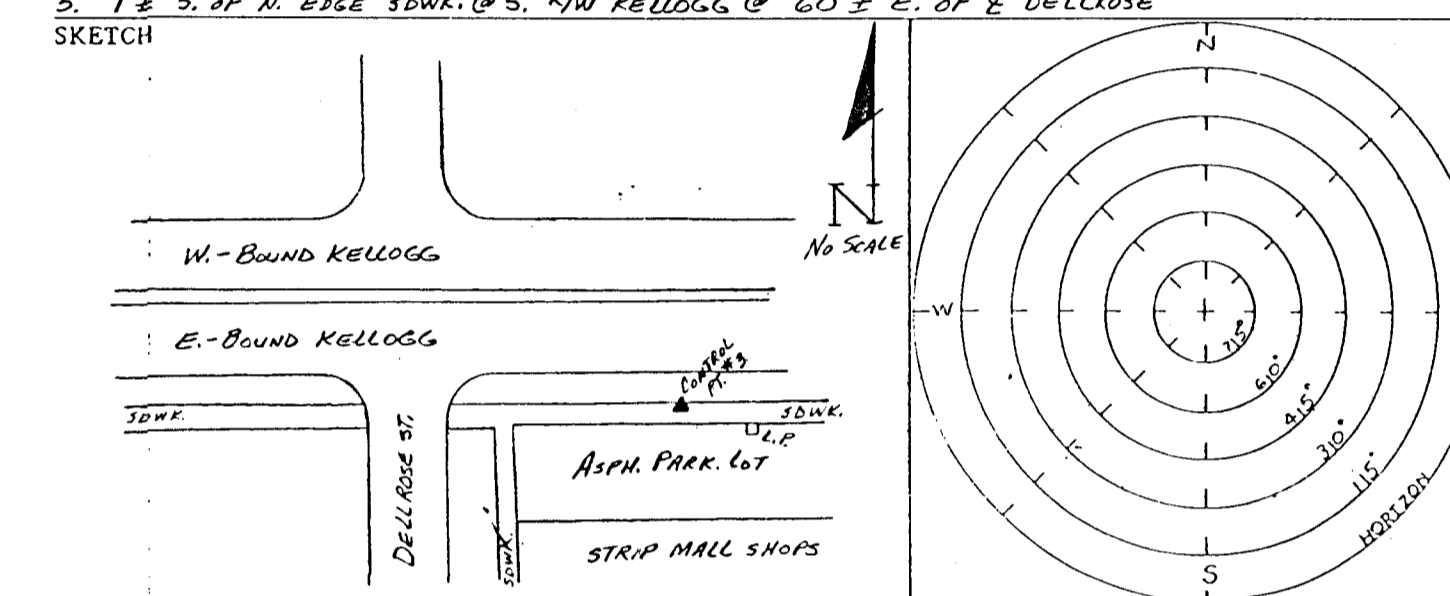
City WICHITA County SEDGWICK State KANSAS
 Section 26 Township 27S Range 1E 6th P.M.
 Monument Title SG 165 KDOT designation _____
 Project KELLOGG/OLIVER INTERCHANGE Date 2/4/92
 Party Chief SLW

Record monument description: NONE

Monument Description: Found Set (describe method if set)
24" LONG #4 REBAR WITH 2" ALUM. DISC STAMPED "SG165"

Reference Ties: RANDOM LOCATION SELECTION (INTERVARIABLE WITH CONTROL PT. #2 (SG164)) #4 (SG166)

- | Description | (Dist.) | (Bearing) | Distance | Bearing |
|---|---------|-----------|----------|---------|
| 1. 43' W. TO CHIS. "4" ON T.O.C. @ SE. COR. INTX. OF DELLOUSE & KELLOGG STREETS | 43' | | | |
| 2. 6' N. TO CHIS. "4" ON T.O.C. ON S. SIDE E-BOUND KELLOGG | 6' | | | |
| 3. 54' S. TO CHIS. "4" ON T.O.C. ON N. SIDE APN. PARK LOT | 54' | | | |
| 4. 23' ESE TO CHIS. "4" ON TOP NW. COR. 2 ND CONC. L.P. BASE 2" TALL | 23' | | | |
| 5. 1' S. OF N. EDGE SDWK. @ S. RW KELLOGG @ 60' E. OF E. DELLOUSE | 1' | | | |



VERTICAL:

DATUM BENCHMARK: U.S.C. & G.S. BENCHMARK A-237 M.S.L. ELEVATION 1316.608

At Wichita, 10.4 feet South of the Northwest corner of the Union Station, 28 feet East of the East rail of the East track, 2.3 feet above the ground, 3 1/2 rails South of the centerline of the Douglas Avenue viaduct, set vertically in the West wall of the Railroad Station, in Section 21, Township 27 South, Range 1 East of the 6th P.M.

HORIZONTAL:

G.P.S. CONTROL POINTS: (ALONG KELLOGG MAIN LINE)

- CONTROL POINT #1 24 INCH LONG #4 REBAR WITH 2 INCH ALUMINUM DISC STAMPED "SG163"
 NORTHING: 1683523.054 EASTING: 1660436.835
 FOR TIES SEE HORIZONTAL FOLDER PAGE 51
- CONTROL POINT #2 24 INCH LONG #4 REBAR WITH 2 INCH ALUMINUM DISC STAMPED "SG164"
 NORTHING: 1683433.460 EASTING: 1662211.797
 FOR TIES SEE HORIZONTAL FOLDER PAGE 52
- CONTROL POINT #3 24 INCH LONG #4 REBAR WITH 2 INCH ALUMINUM DISC STAMPED "SG165"
 NORTHING: 1683482.445 EASTING: 1665178.745
 FOR TIES SEE HORIZONTAL FOLDER PAGE 53
- CONTROL POINT #4 24 INCH LONG #4 REBAR WITH 2 INCH ALUMINUM DISC STAMPED "SG166"
 NORTHING: 1683523.087 EASTING: 1667959.047
 FOR TIES SEE HORIZONTAL FOLDER PAGE 54
- CONTROL POINT #5 24 INCH LONG #4 REBAR WITH 2 INCH ALUMINUM DISC STAMPED "SG167"
 NORTHING: 1683508.689 EASTING: 1669392.729
 FOR TIES SEE HORIZONTAL FOLDER PAGE 55

NO.	DATE	REVISIONS	BY	APP'D
3				
2				
1				

CITY OF WICHITA

SURVEY CONTROL POINTS

SHEET NO.	OF	SCALE	APP'D
DESIGNED		DETAILED	QUANTITIES
DESIGN CK.		DETAIL CK.	QUAN. CK.
			TRACED
			TRACE CK.