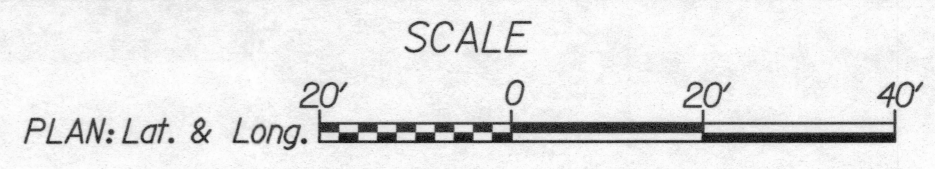
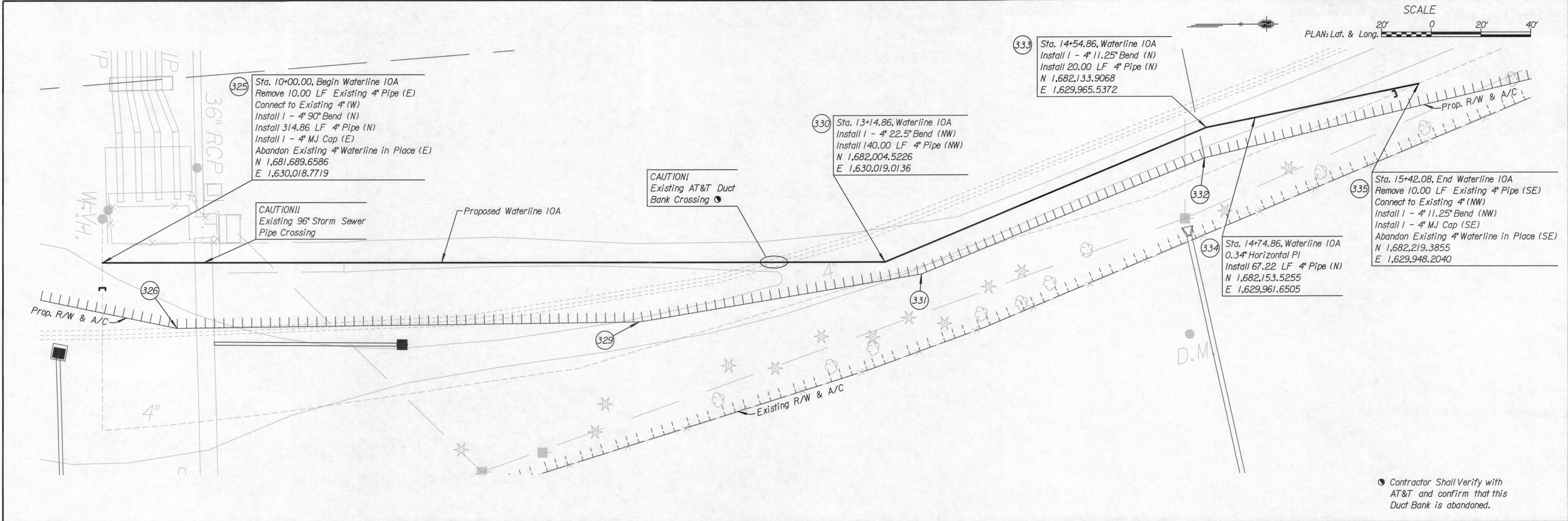


SUSERS 6/8/2015 12:24:44 PM SFILELS



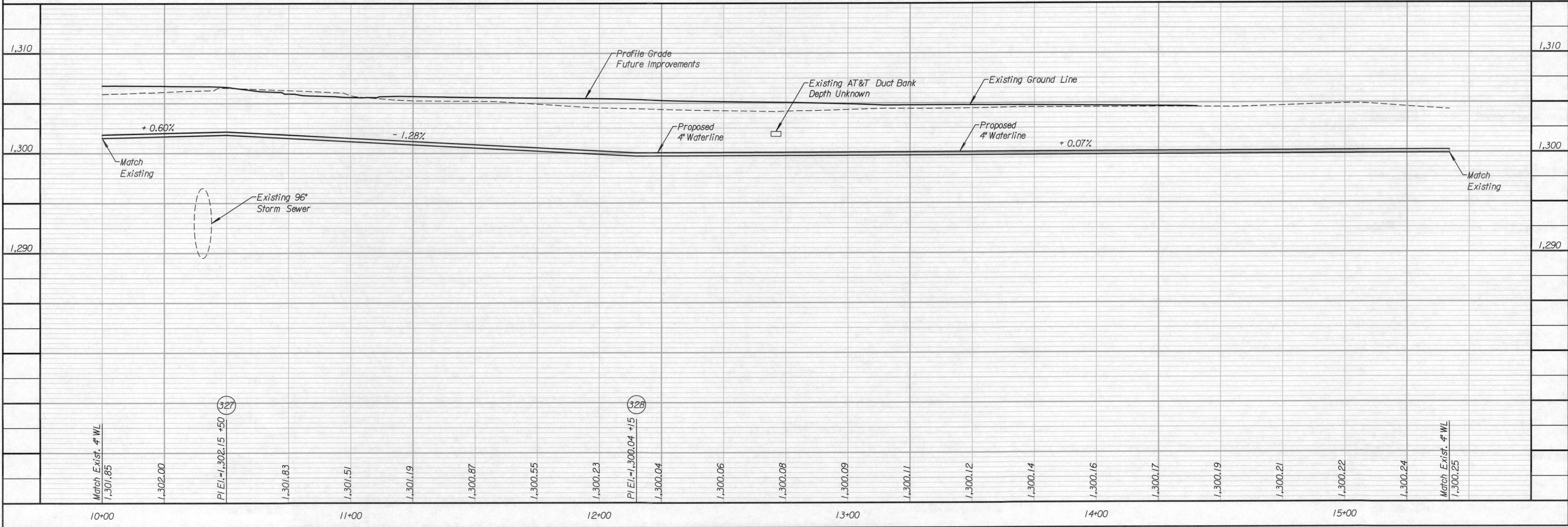
**TranSystems**  
 245 NORTH WACO  
 SUITE 222  
 WICHITA, KANSAS 67202  
 PHONE: 316-303-3000  
 FAX: 316-303-0156

PROFESSIONAL ENGINEER  
 LICENSE NO. 20585  
 6/8/15  
 KANSAS  
 PROFESSIONAL ENGINEER

CONSULTANTS:

**WATER MAIN RELOCATIONS - PHASE 1  
 KELLOGG & I-235 INTERCHANGE  
 RED PROJECT**

WICHITA, KANSAS  
 CITY OF  
**WICHITA**



REVISIONS:	MARK	DATE	DESCRIPTION

PROJ NO: P125140031  
 SCALE: 1" = 20'  
 DATE: 6/8/2015  
 DESIGNED BY: DAN  
 DRAWN BY: DAN  
 CHECKED BY: MDB

SHEET TITLE:  
**WATERLINE 10A  
 STA. 10+00.00 TO  
 STA. 15+42.08**

SHEET NO.  
**19**  
 SHEET 19 OF 22