

P.O.T. Sta. 8+50 West Branch @
N. 1682597.275
E. 1666614.205
1. Set #4 Rebar with PEC Cap
2. No Ties

P.O.T. Sta. 10+00 West Branch @
N. 1682747.280
E. 1666611.900
1. Set 3/4" I.P. with PEC Cap @ toe East Bank
2. Nail & Shiner West Face Power Pole
3. Nail & Shiner West Face 20" Willow Tree
4. Center Creek Channel

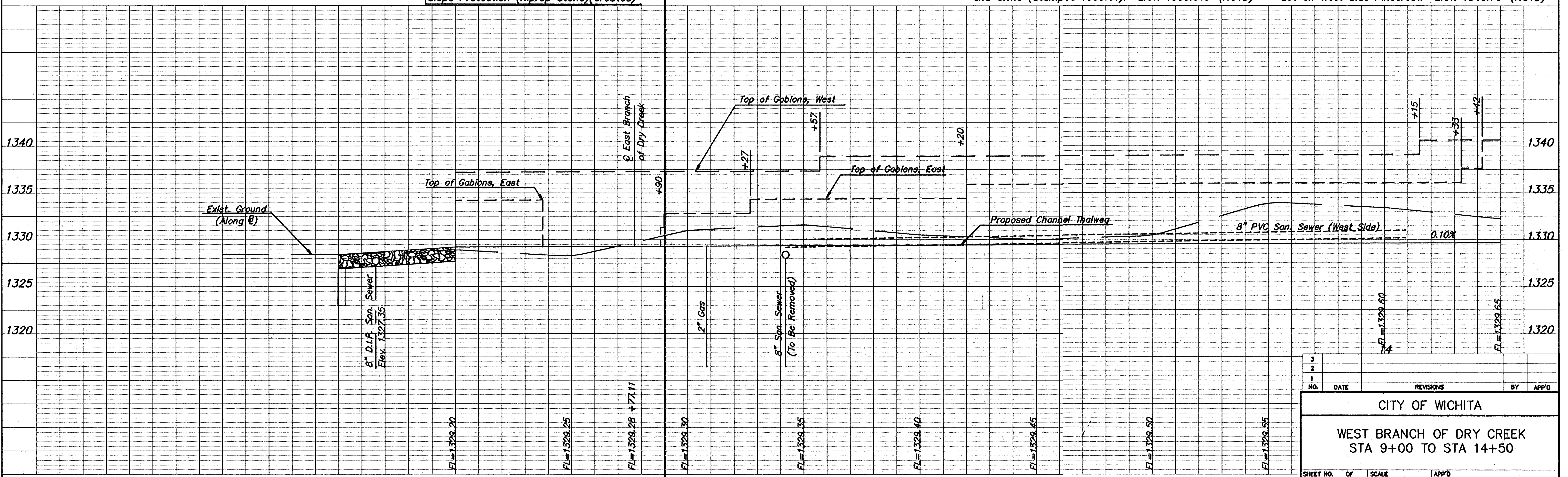
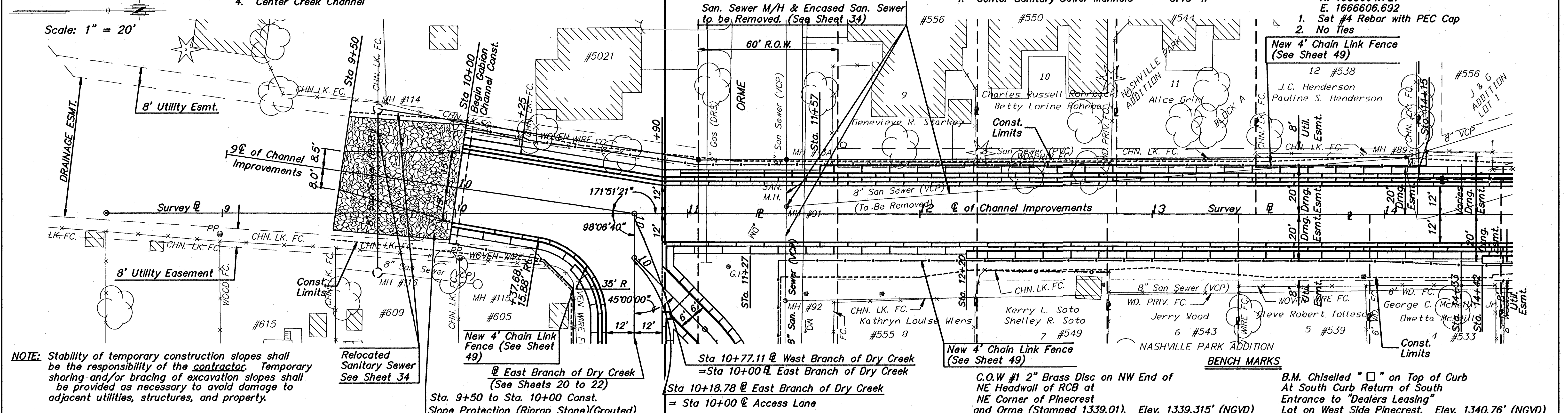
Access West Branch Dry Creek
through Orme St. Right-Of-Way
18.7' ENE
10.45' SSE
12'(\pm) E

P.I. Sta. 10+77.11 West Branch @
Sta. 10+00 East Branch @
N. 1682824.380
E. 1666610.640
1. Set 3/4" I.P. w/PEC Cap on Top West Bank
2. No Ties

P.O.T. Sta. 11+43.28 West Branch @
N. 1682890.543
E. 1666609.558
1. Set Chiselled "L" top of Concrete Sewer Encasement
2. Orme Extended West 10'(\pm) S
3. Center Sanitary Sewer Manhole 37.18' E
4. Center Sanitary Sewer Manhole 3.43' W

FWHA REG NO.	STATE	PROJECT NO.	YEAR	SHEET NO.	SHEETS
7	KANSAS	54-87 K-4445-01	1998	18	73

P.O.T. Sta. 13+17.49 West Branch @
N. 1683064.727
E. 1666606.692
1. Set #4 Rebar with PEC Cap
2. No Ties



NO.	DATE	REVISIONS	BY	APP'D
3				
2				
1				

CITY OF WICHITA
WEST BRANCH OF DRY CREEK
STA 9+00 TO STA 14+50

SHEET NO.	OF	SCALE	APP'D
DESIGNED	MOK	DETAILED	MOK
DESIGN CK.	MJK	DETAIL CK.	MKEC
		QUANTITIES	MKEC
		TRACE CK.	MKEC