

P.I. Sta. 11+07.24 East Branch @  
 N 1682826.080  
 E 1666717.870  
 1. Set 3/4" I.P. with P.E.C. Cap  
 2. North Corner, North End, West Headwall To RCB 22.5' N  
 3. East Corner, South End, West Headwall To RCB 22.8' E  
 4. To Center, West End of Wingwall 20.6' NNW

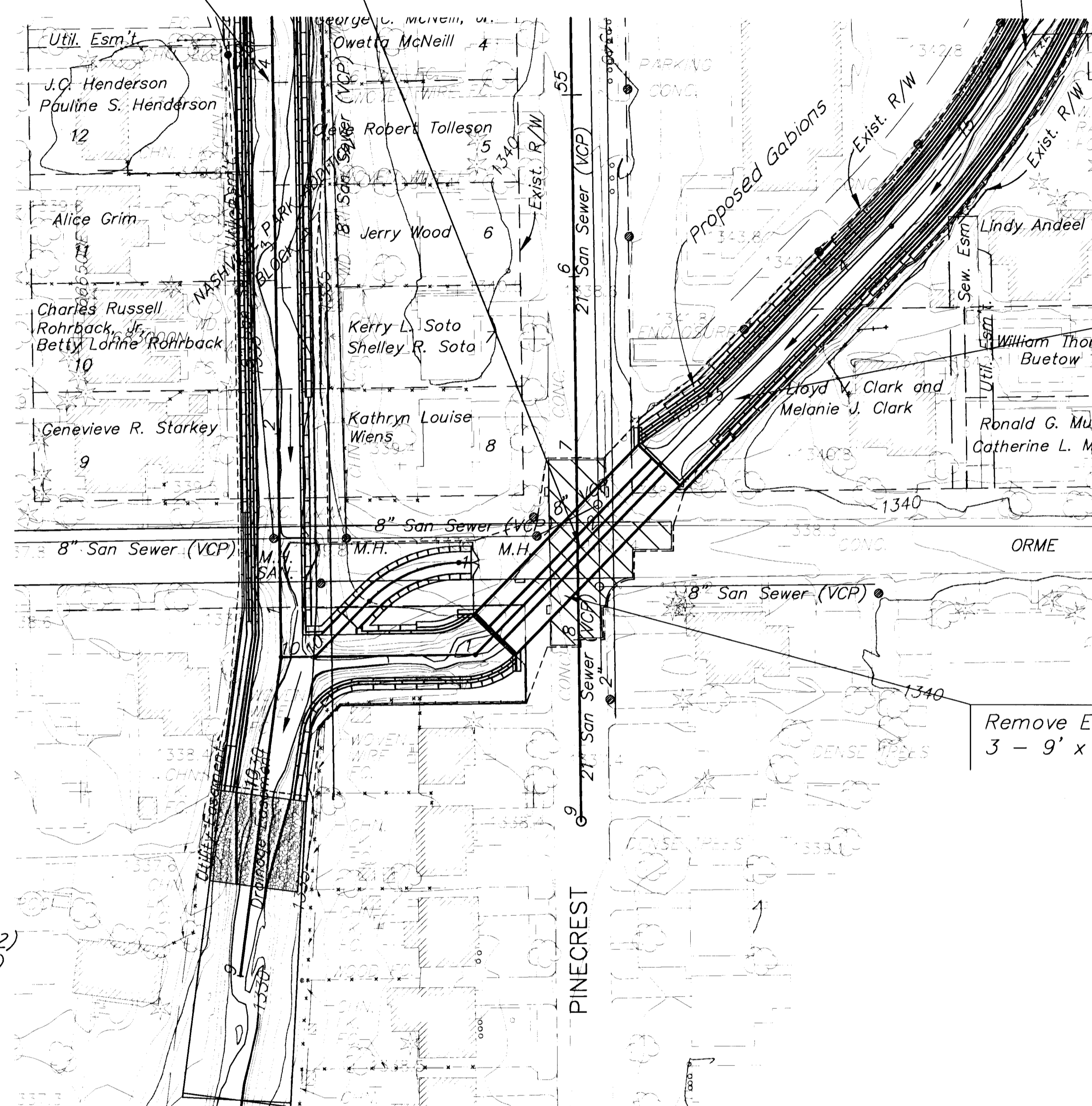
P.I. Sta. 14+36.61 East Branch @  
 N 1683062.639  
 E 1666947.052  
 1. Set 3/4" I.P. with P.E.C. Cap 40' W  
 2. Set Chiselled "+"  
 N 1683090.471  
 E 1666947.052  
 3. Set 3/4" I.P. with P.E.C. Cap 40' E  
 N 1683034.806  
 E 1666975.781

FHWA REG NO.	STATE	PROJECT NO.	YEAR	SHEET NO.	SHEETS
7	KANSAS	54-87 K-4445-01	1996	42	73

Sta 57+50.28 Pinecrest =  
 Sta 11+88 East Branch of Dry Creek  
 Construct  
 3-10'x6'x130' R.F.B. Bridge  
 Rotate 45° Lt.

West Branch of Dry Creek

East Branch of Dry Creek



Scale: 1"=50'

**CONSTRUCTION NOTE:**  
 A stiff clay or weathered shale material should be encountered at the proposed founding level. The shale will deteriorate upon exposure with time and also will soften if left covered with water. The Bridge Contractor shall exercise care to protect the founding level as he prepares for placement of concrete for the floor slab.

**REMOVAL OF EXISTING STRUCTURE:**  
 The Contractor shall remove the existing structure as indicated including all wingwalls. All materials removed shall be taken from the site and disposed of by the Contractor at locations approved by the Engineer.

**CONSTRUCTION METHOD:**  
 Construction for the 3-10'x6' RFB shall be cast-in-place as detailed in the plans. Precast construction will not be allowed.

See Sh. No. 320, 21 & 72  
 For East Branch Channel  
 Improvement and Intersection Improvement

**UTILITIES**

Power Kansas Gas & Electric (316-261-6251)  
 Gas Kansas Power and Light Gas Service (316-832-0012)  
 Water City of Wichita Water Department (316-268-4908)

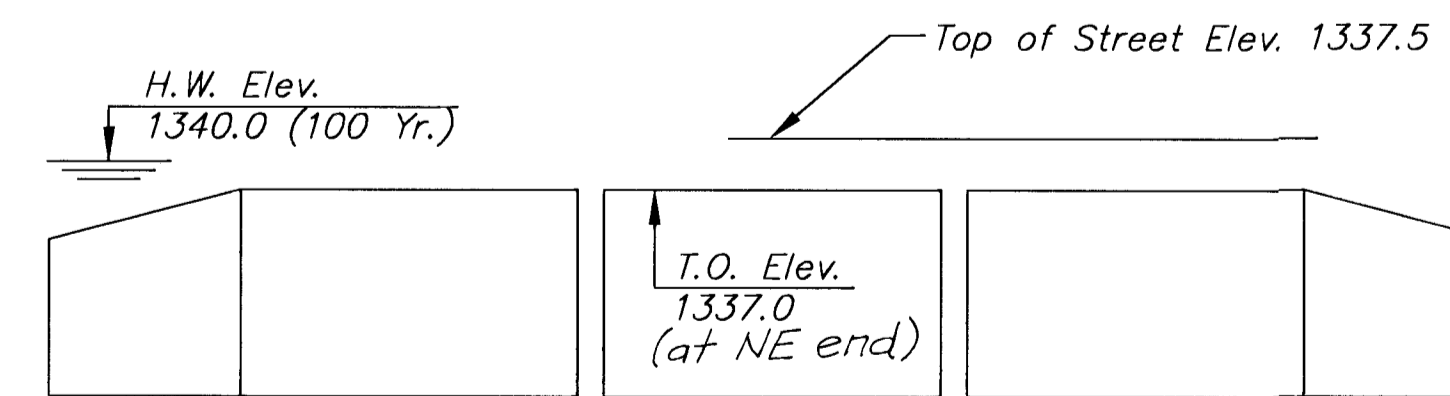
**DRAINAGE DATA**

East Branch of Dry Creek  
 3-10' x 6' R.F.B. Bridge @ Orme

Drainage Area 1.30 Sq. Mi.  
 Design Frequency 50 Yr.  
 Design Discharge 1440 cfs  
 Design High Water Elevation (HW = 10.1 Ft.) 1339.6 Ft.

Overtopping Elevation (NE Corner of Pinecrest & Orme) 1337.5 Ft.  
 Overtopping Discharge 950 cfs  
 Overtopping Frequency 10(-) Yr.

Q<sub>100</sub> 1680 cfs  
 High Water Elevation at Q<sub>100</sub> 1340.1 Ft.  
 Revised (pending) FEMA 100 Yr.  
 Floodplain Elevation (Regulatory) 1340.1 Ft.



**EXISTING WATERWAY SKETCH**

Total Waterway = 1.35 Sq. Ft.  
 3-9'x5' RCB

BM #25 Chisled "□" on top of curb at S.P.C.R. of S. entrance to "Dealers Leasing" lot on W. side Pinecrest Elev. 1340.760

BM City of Wichita Bench Mark, N.E. corner RCB Pinecrest and Orme Elev. 1339.010

BM City of Wichita Bench Mark, N.E. corner intersection Edgemoor and Orme Elev. 1350.91

NO.	DATE	REVISIONS	BY	APP'D
3				
2				
1				

CITY OF WICHITA

STA. 57+50.28  
 (Pinecrest)

CONTOUR MAP

PROJ. NO. 54-87 K-4445-01 SEDGWICK CO.

SHEET NO.	OF	SCALE	APP'D						
DESIGNED	MDK	DETAILED	KLH	QUANTITIES	TRACED				
DESIGN	CK.	JNJ	DETAIL	CK.	MDK	QUAN.	CK.	TRACE	CK.