

GENERAL NOTES

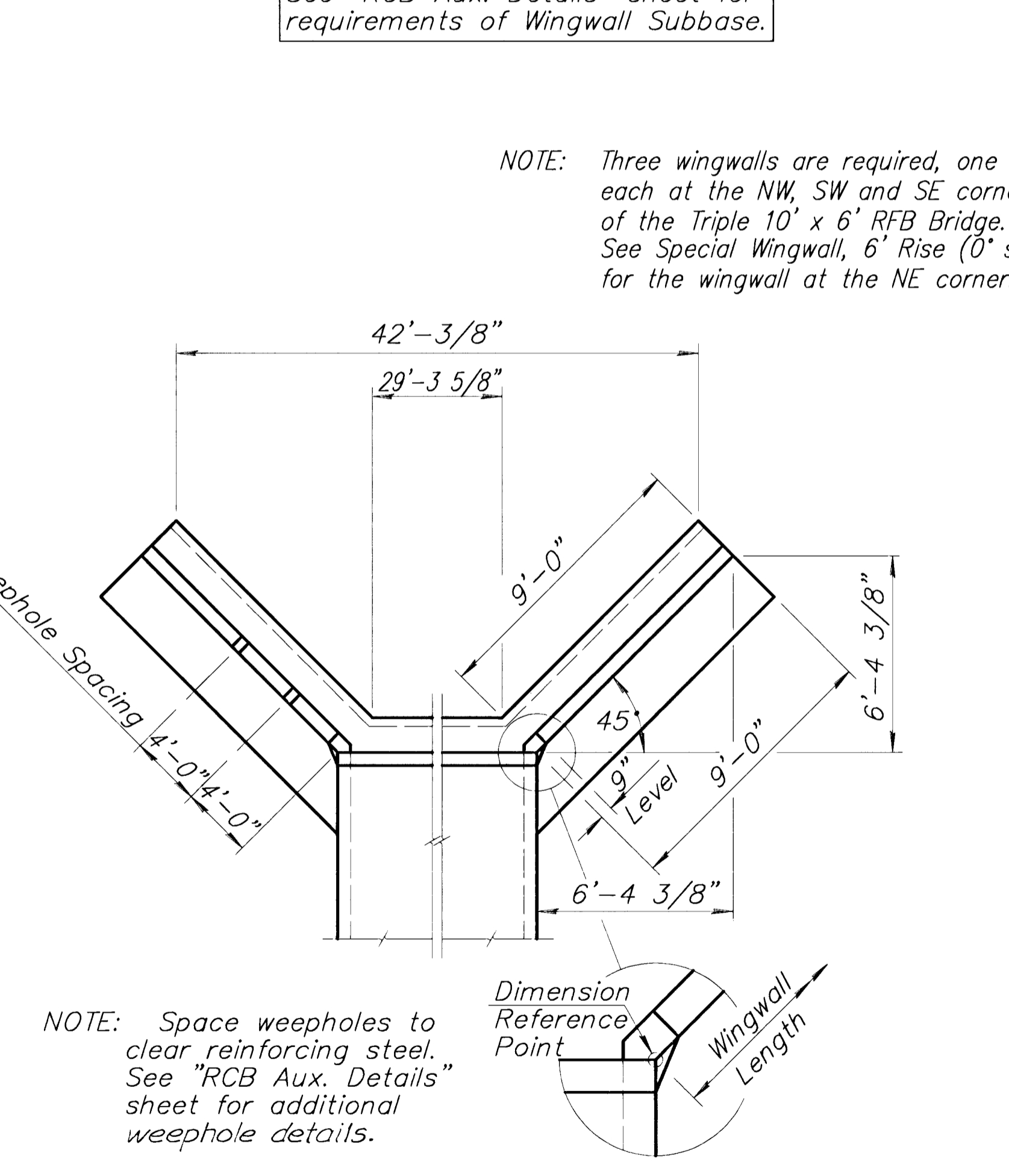
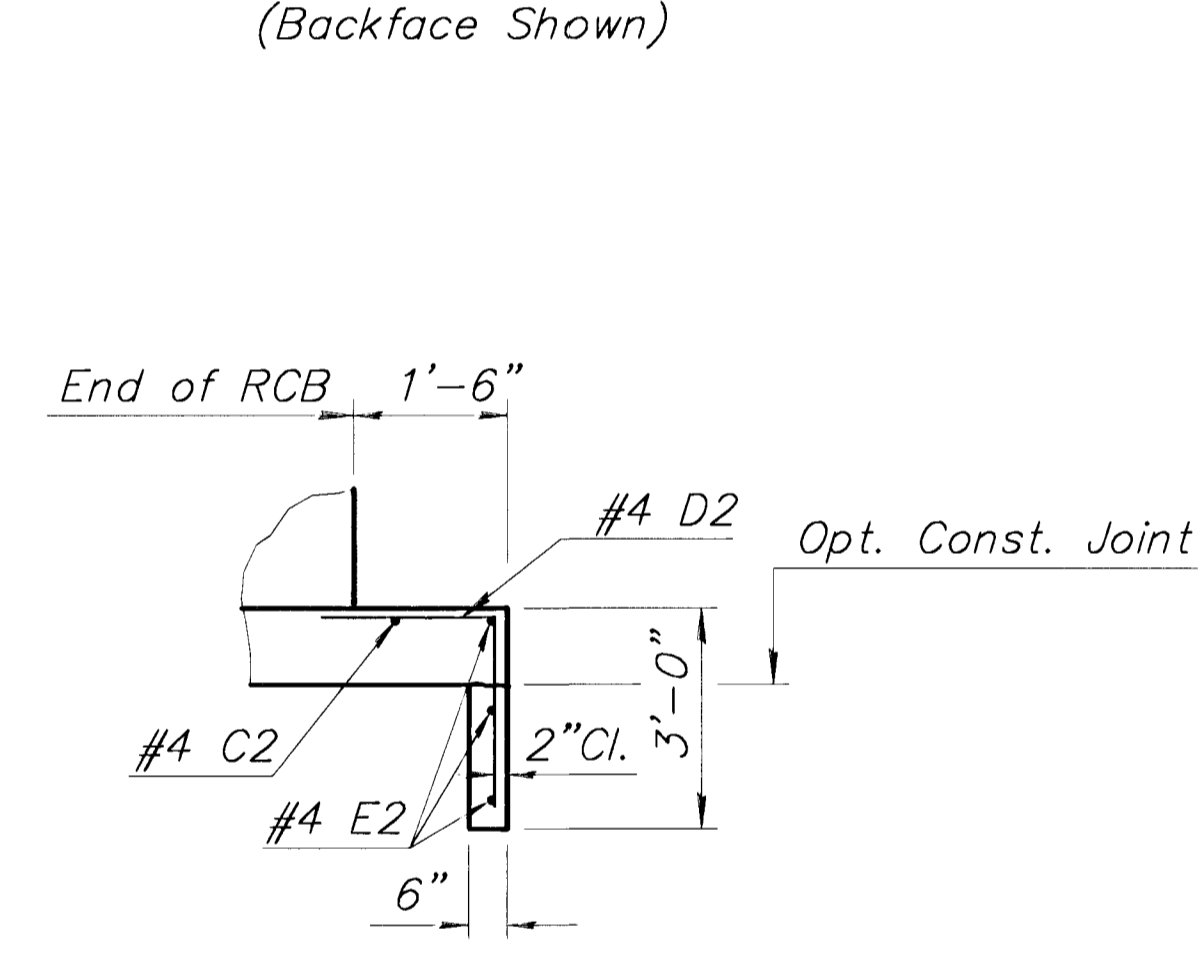
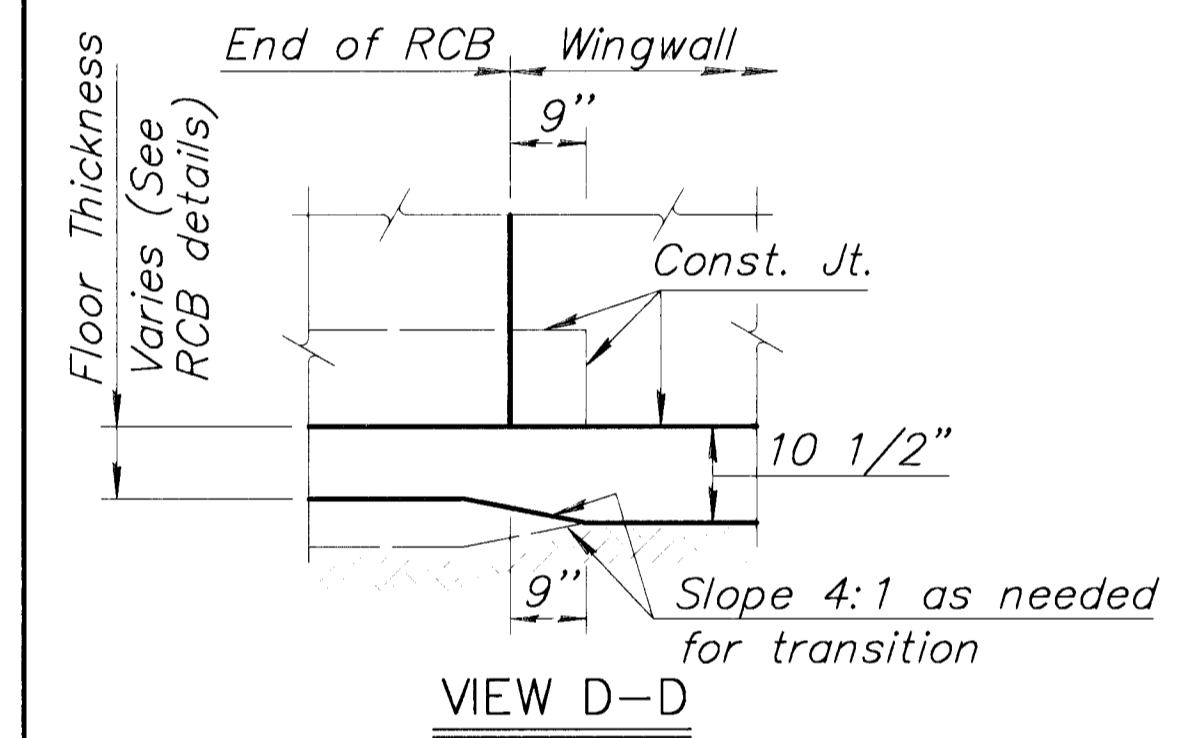
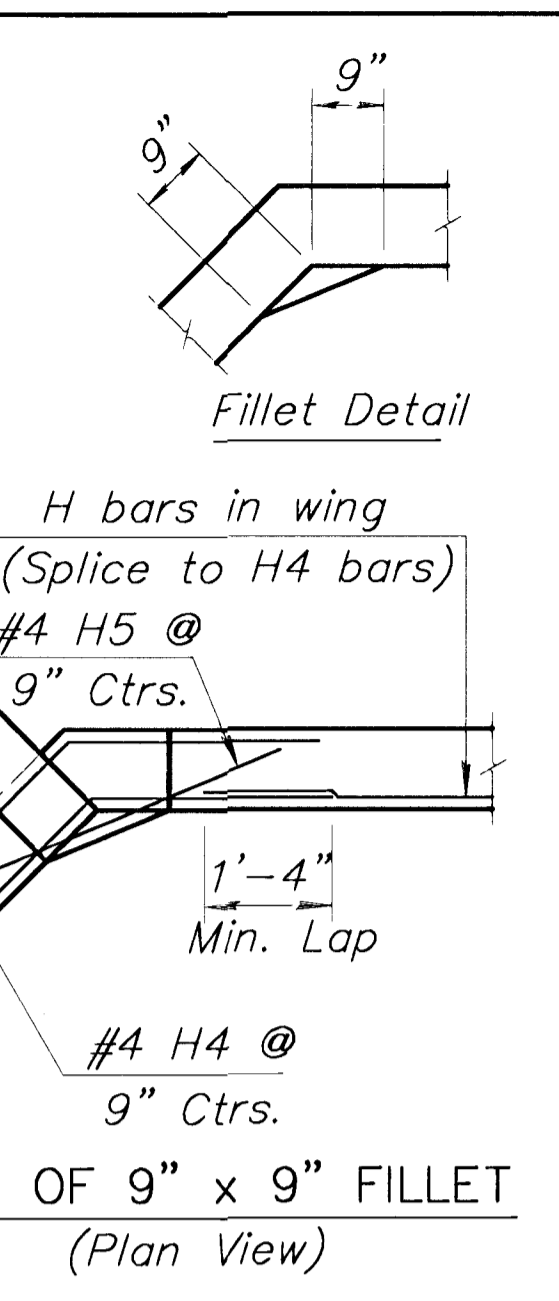
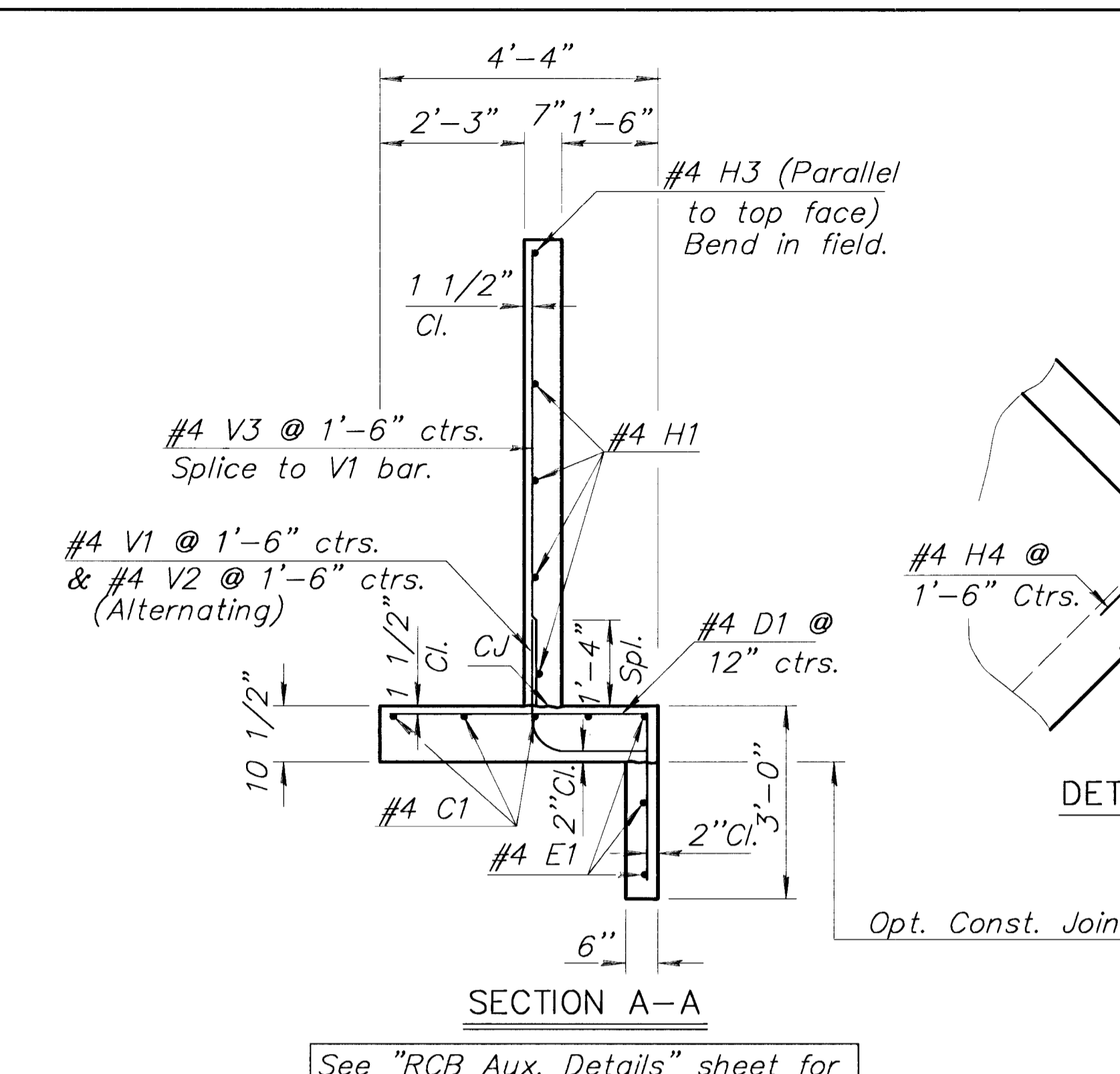
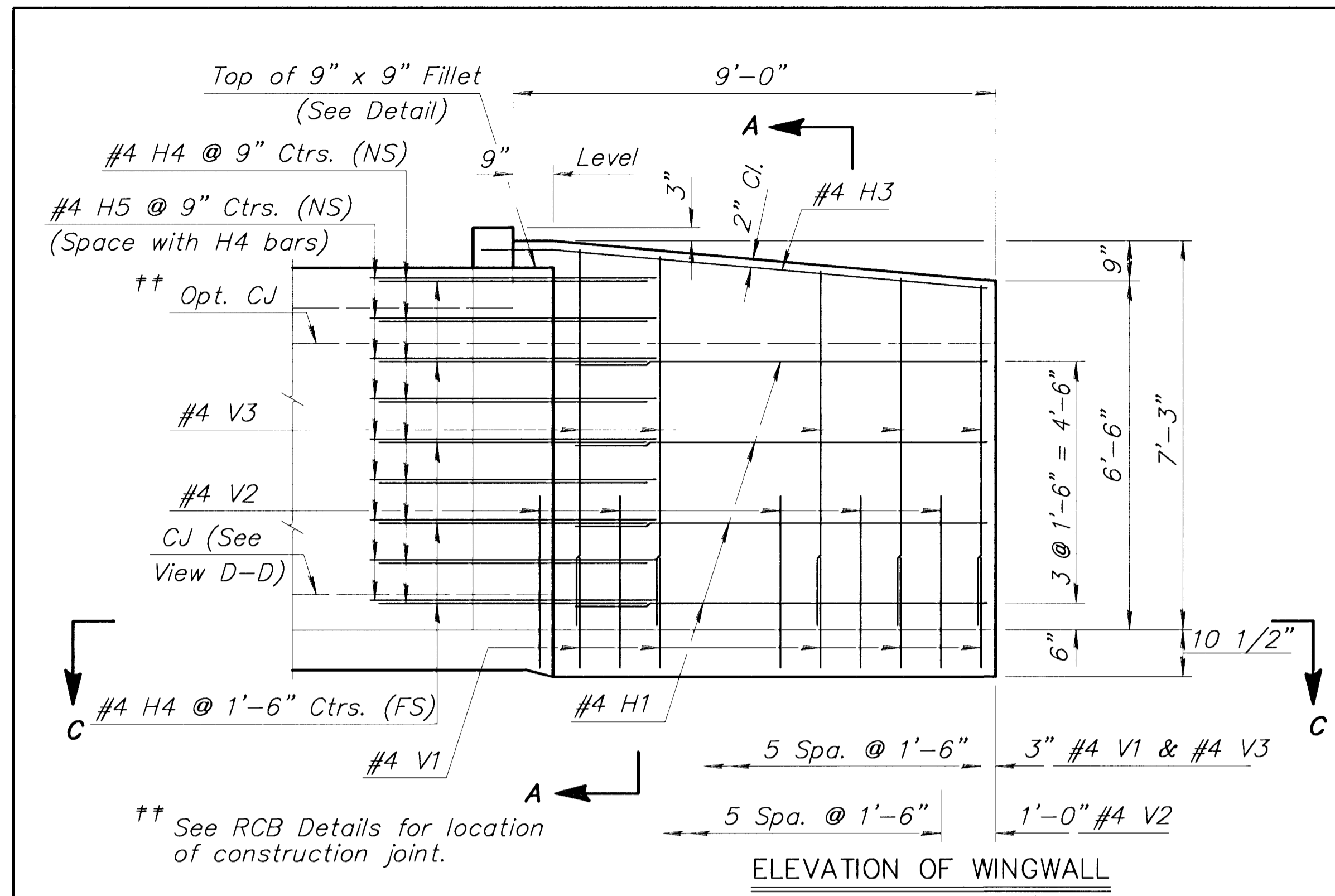
UNIT STRESSES: Class AAA Concrete; $f'_c = 4,000$ p.s.i.
Reinforcing Steel; $f_y = 60,000$ p.s.i.

CONCRETE: Class AAA Concrete shall be used throughout. Bevel all exposed edges with a 3/4 inch triangular moulding.

REINFORCING: All reinforcing shall conform to ASTM A615, Grade 60.

QUANTITIES: Wingwall Quantities include all quantities outside the neat lines of the box, excluding the hubguard.

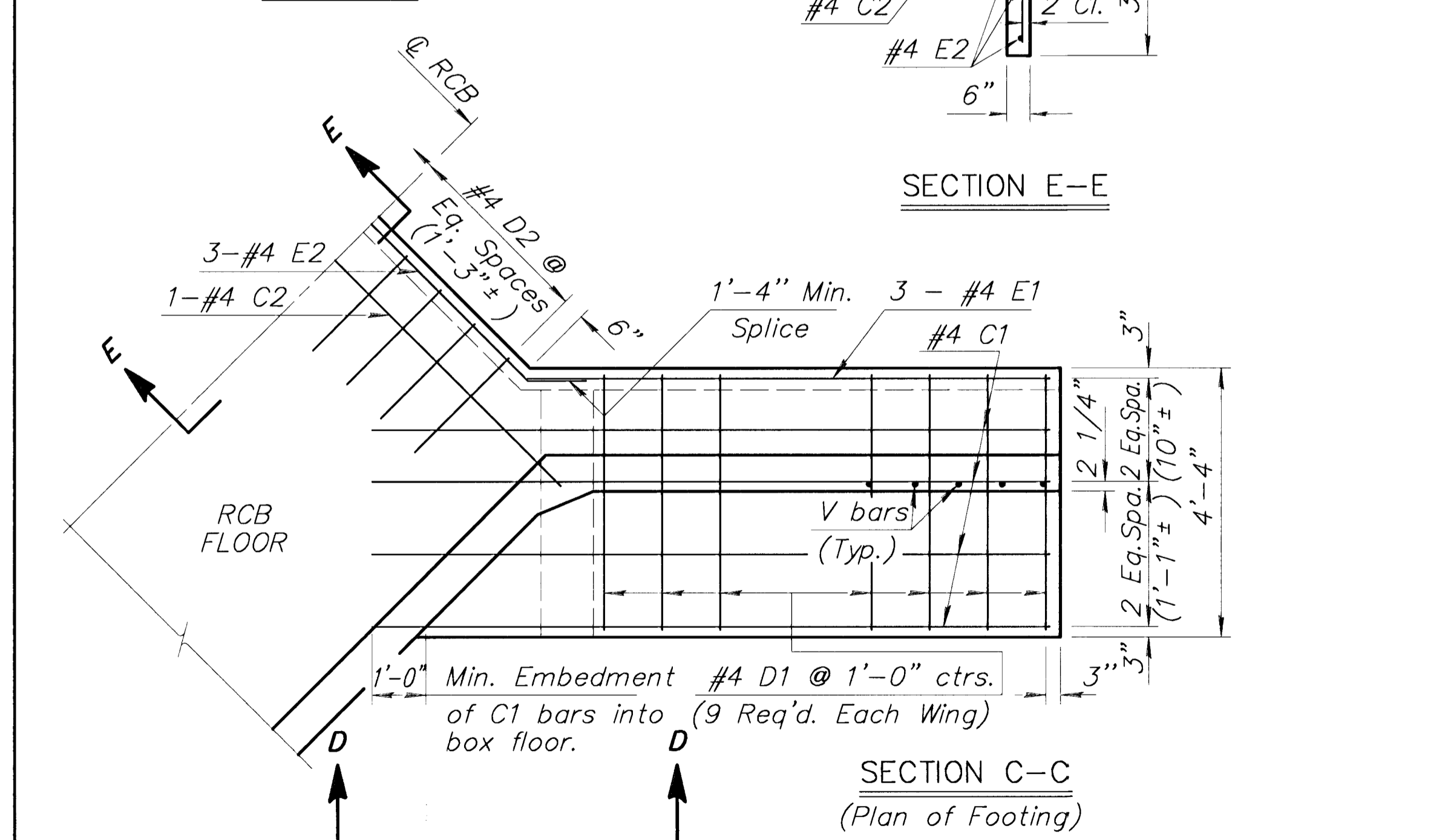
FOUNDATION AND BACKFILL MATERIAL: Soils judged as high plasticity clays, fat clays, expansive clays, or organic clays are unsuitable for foundation and/or backfill material for wingwalls and will not be used. Where these conditions exist, Foundation Stabilization and/or Granular Backfill (Wingwalls) shall be used as determined by the Engineer. See "RCB Auxiliary Details" sheet for additional details.



Storm Pipe Location Summary

STRUCTURE	PIPE MARK	STATION	OFFSET	WALL	SIZE	ELEV.
Pincrest at E.B.D.C.	--	11+97.36 11+35.5	16.12' Lt. 16.12' Rt.	West East	18" 24"	Match Exist 1331.47

NOTE: Stations and offsets are at intersection of ϕ Pipe with outside face of R.C.B. wall, referenced to ϕ E.B.D.C. See Sheet 46 for Wall Opening Details for Storm Pipes.

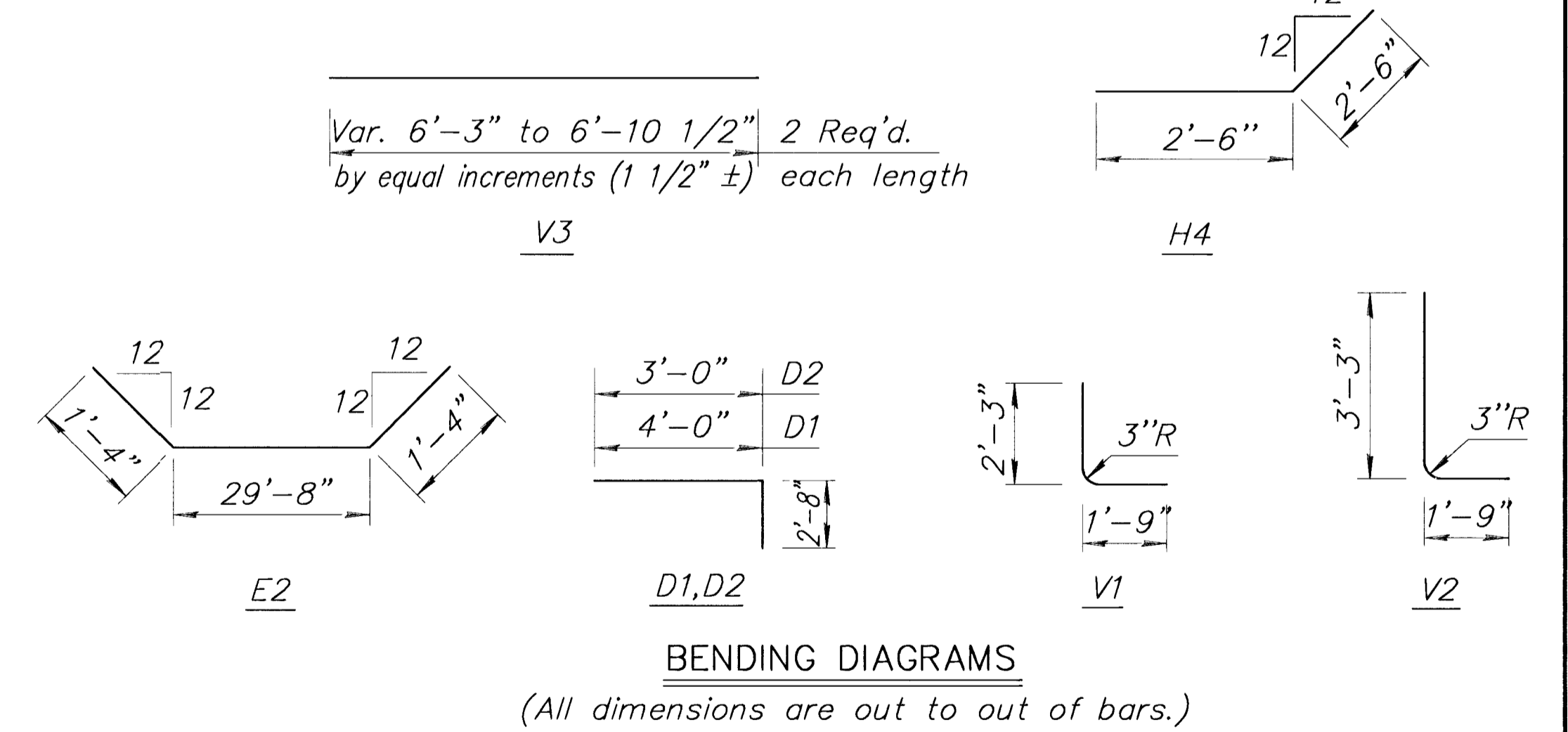


WING DIMENSIONS FOR NORMAL BOX

NOTE: Space weepholes to clear reinforcing steel. See "RCB Aux. Details" sheet for additional weephole details.

Bar Size	Splice Length
#4	1'-4"
#5	1'-8"
#6	2'-0"

Quantities listed are included in the Summary of Quantities shown on the RCB details.



NOTE: Reinforcing Bar List is for both wings at the S.W. end of the box. * See Bending Diagram

Mark	#4C1	#4D1	#4E1	#4C2	#4D2	#4E2	#4V1	#4V2	#4V3	#4H1	#4H3	#4H4	#4H5
0° Skew Number	8	18*	6	1	24*	3*	12*	12*	12	8	2	28*	18
Length	11'-7"	6'-8"	8'-9"	32'-0"	5'-8"	32'-4"	4'-0"	5'-0"	*	7'-10"	9'-6"	5'-0"	3'-6"

WINGWALL QUANTITIES (S.W. End Only, both wings)

Class AAA Concrete	8.5 CY.
Reinforcing Steel	670 Lbs.

NO.	DATE	REVISIONS	BY	APP'D

CITY OF WICHITA

STA. 57+50.28
FLARED WINGWALLS (Pincrest)
6 FT. RISE (0° SKEW)

PROJ. NO. 54-87 K-4445-01 SEDGWICK CO.

FHWA APPROVAL: DESIGNED: MKK, CHECKED: KJS, QUANTITIES: MKK, TRACED: MKK, QUAN. CK.: MKK

ORIG. FROM:	BRG. NO.	PROJ.	CO.	CHECK
DESIGN	DATE	DATE	DATE	DATE
QUANTITIES	DATE	DATE	DATE	DATE
TRACING	DATE	DATE	DATE	DATE
RETRACED	DATE	DATE	DATE	DATE