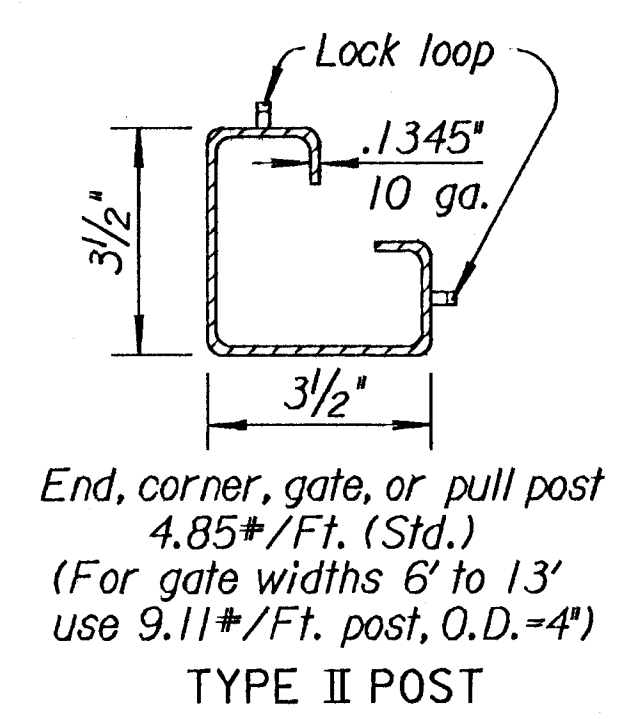
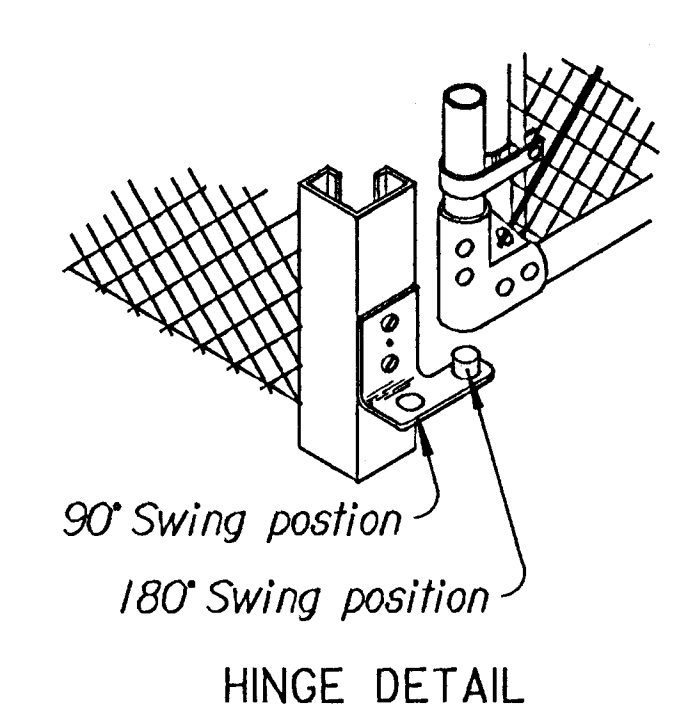


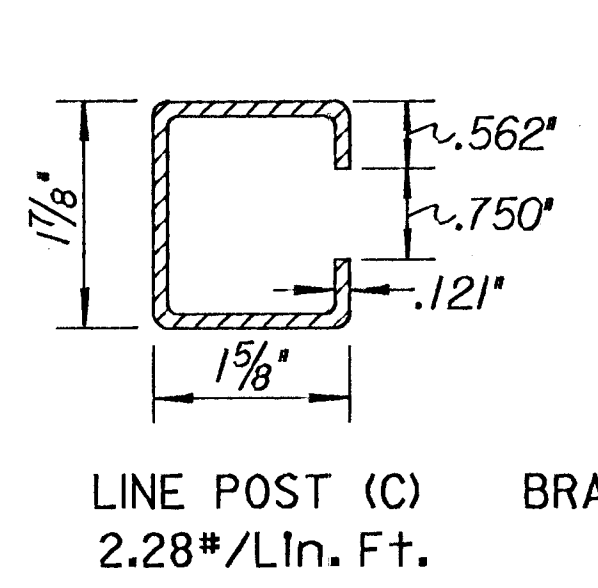
FHWA REGION NO.	STATE	PROJECT NO.	YEAR	SHEET NO.	TOTAL SHEETS
7	KANSAS	54-87 K-4445-01	1996	51	73



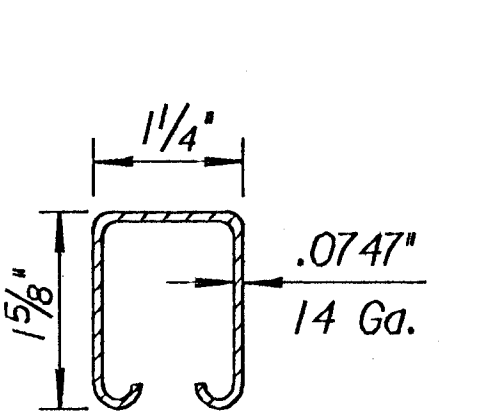
End, corner, gate, or pull post
4.85#/Ft. (Std.)
(For gate widths 6' to 13'
use 9.11#/Ft. post, O.D. = 4")
TYPE II POST



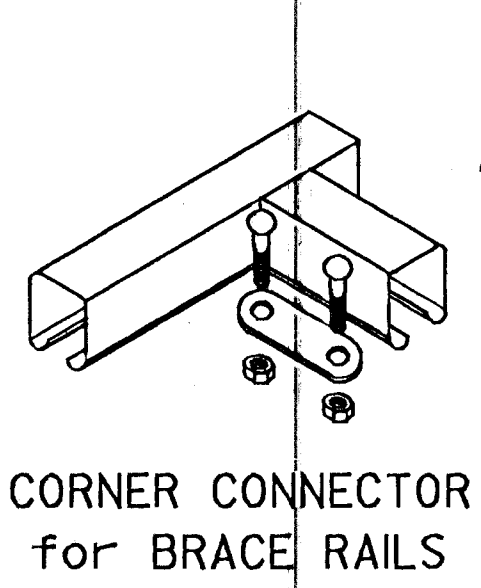
HINGE DETAIL



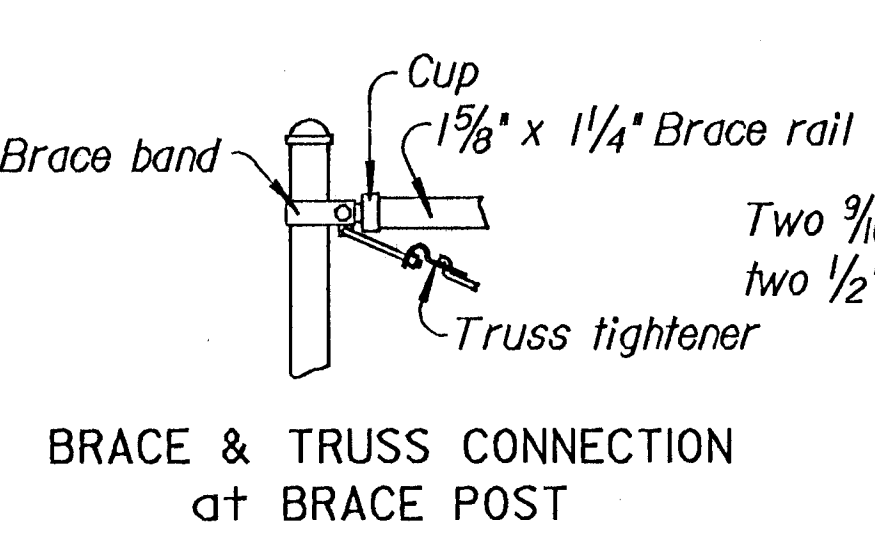
LINE POST (C)
2.28#/Lin. Ft.



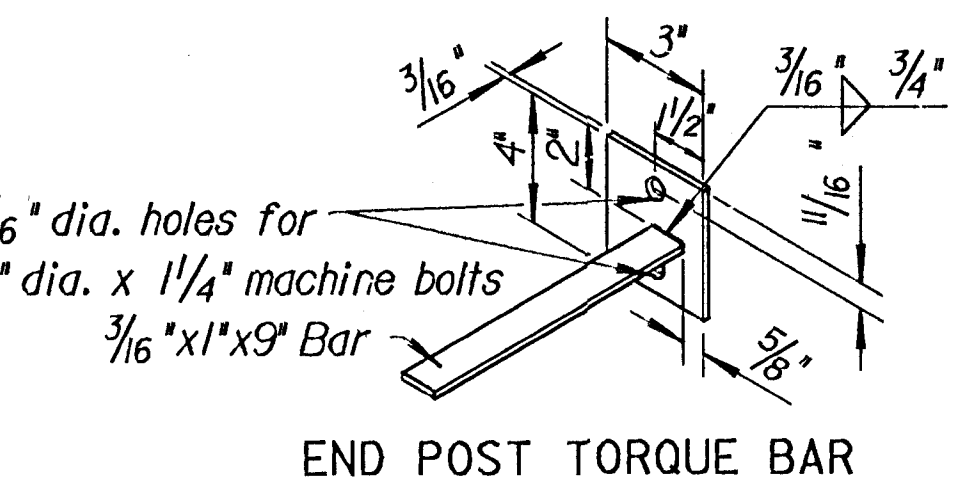
BRACE RAIL SECTION



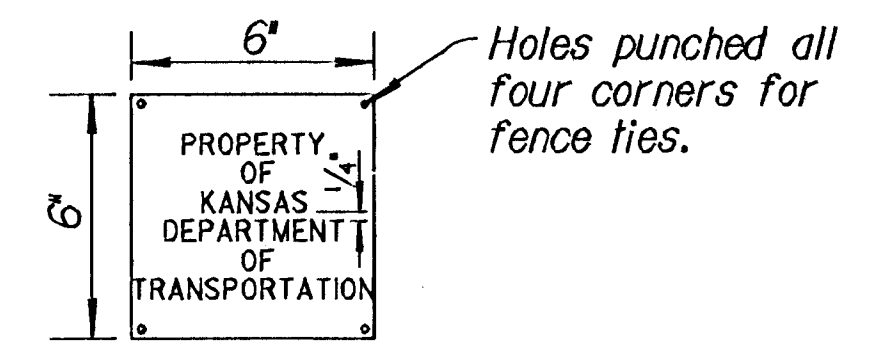
CORNER CONNECTOR
for BRACE RAILS



BRACE & TRUSS CONNECTION
at BRACE POST

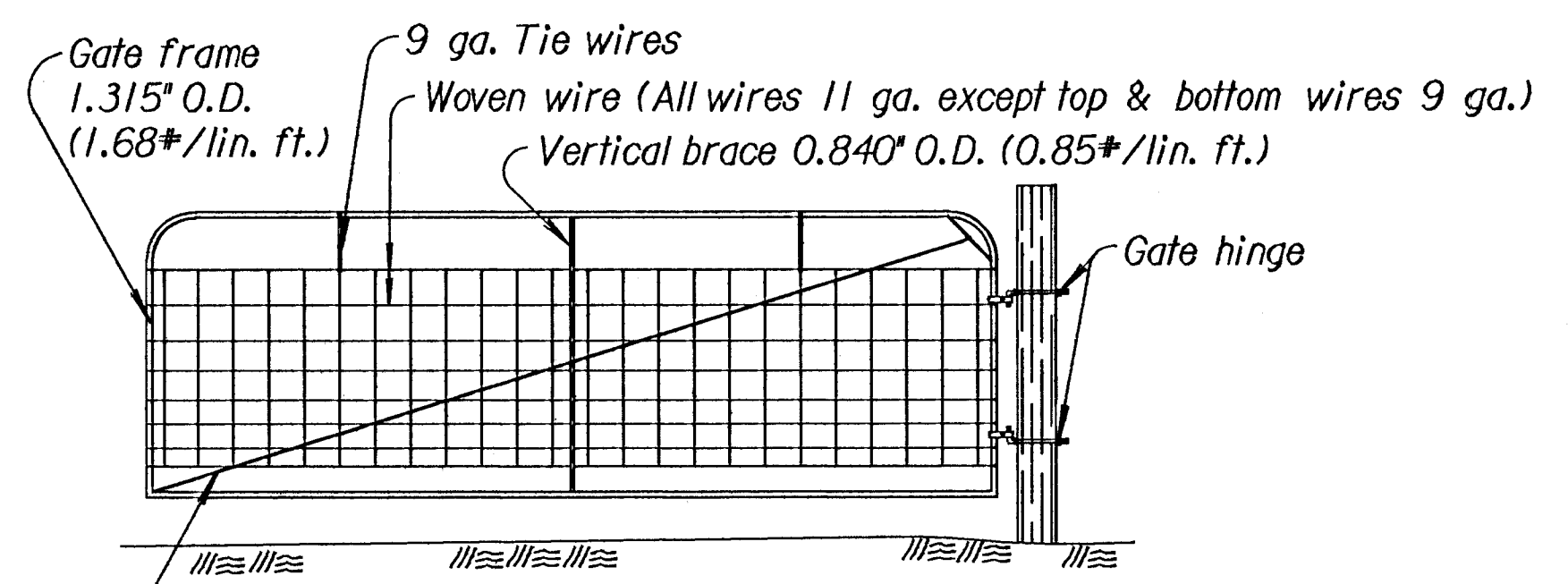


END POST TORQUE BAR

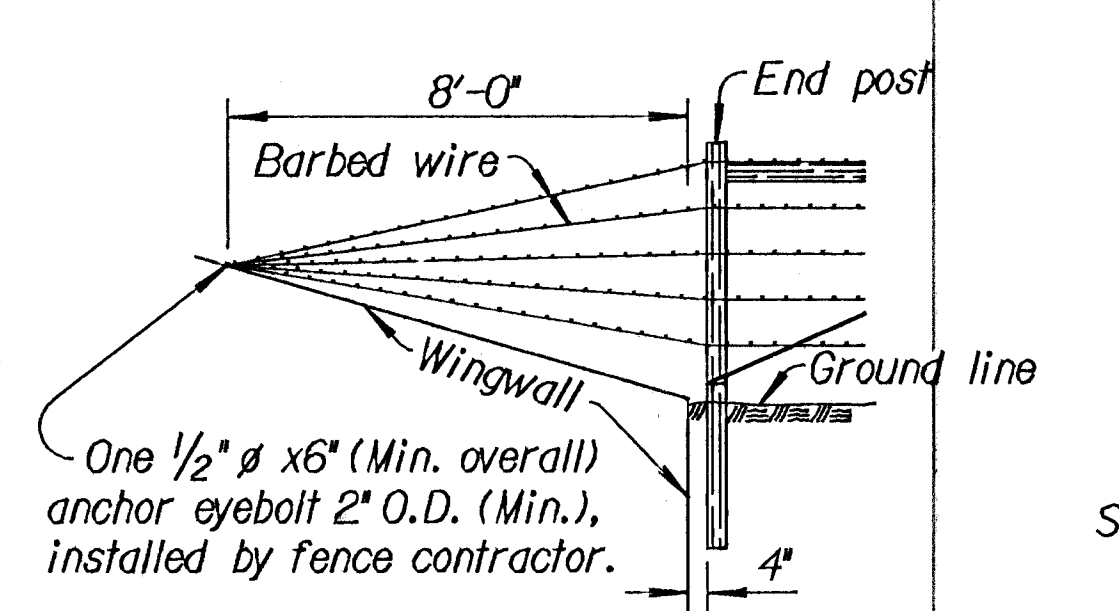


IDENTIFICATION SIGN
(20 ga. Metal)

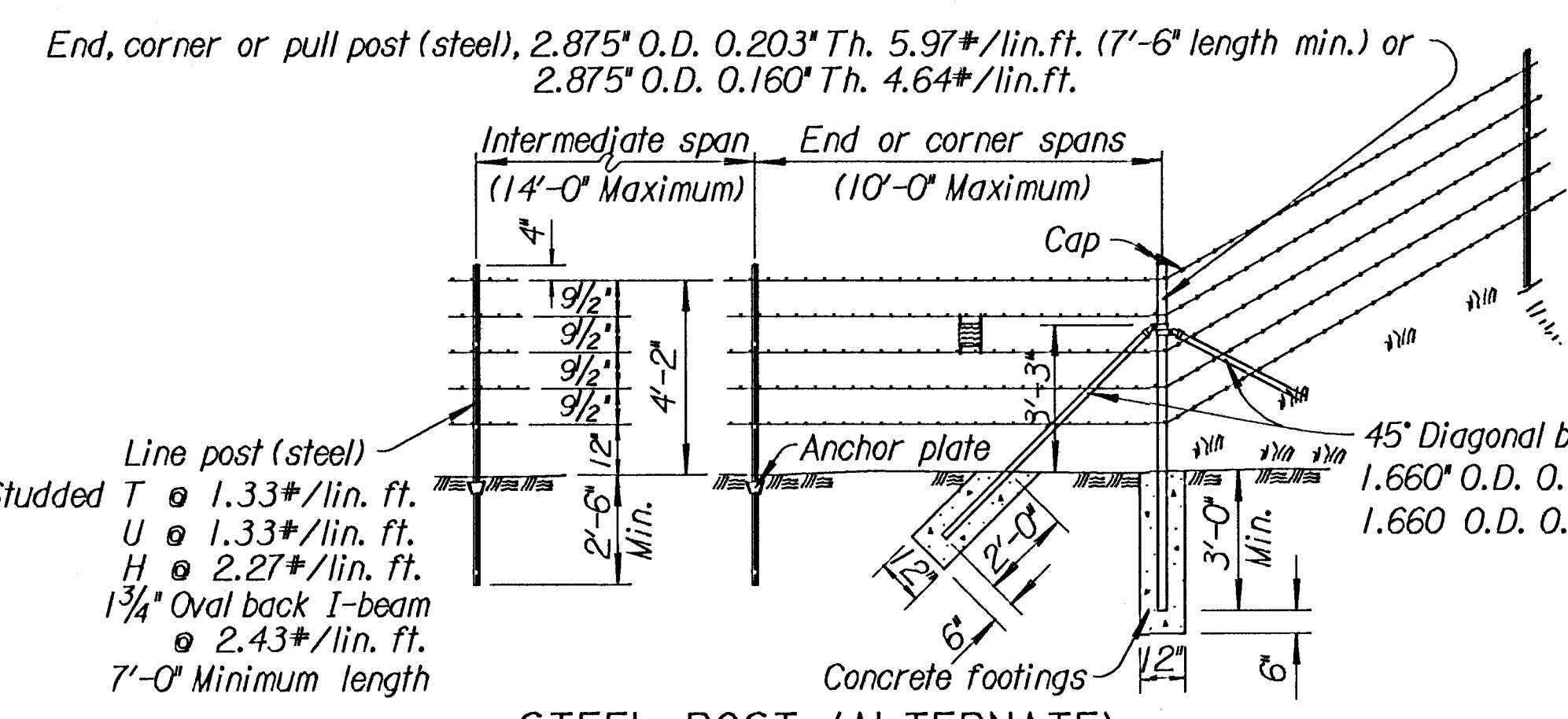
Front and back of Identification Sign to be painted white.
1/2" Block lettering as shown in sketch to be applied on the white background in black color on both sides of the sign.
This sign is to be tied to the fence with twisted wire at each corner of the sign as shown and shall be placed at 300' to 500' intervals along the line of fence.



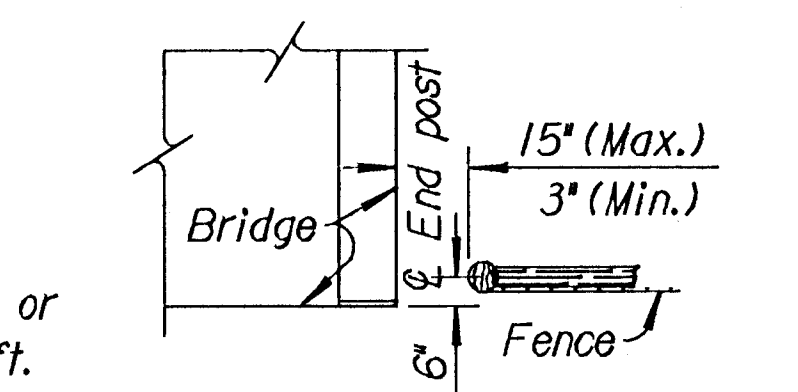
DETAIL of GATE, HINGE & SPECIFICATIONS
(for Barbed & Woven Fence)



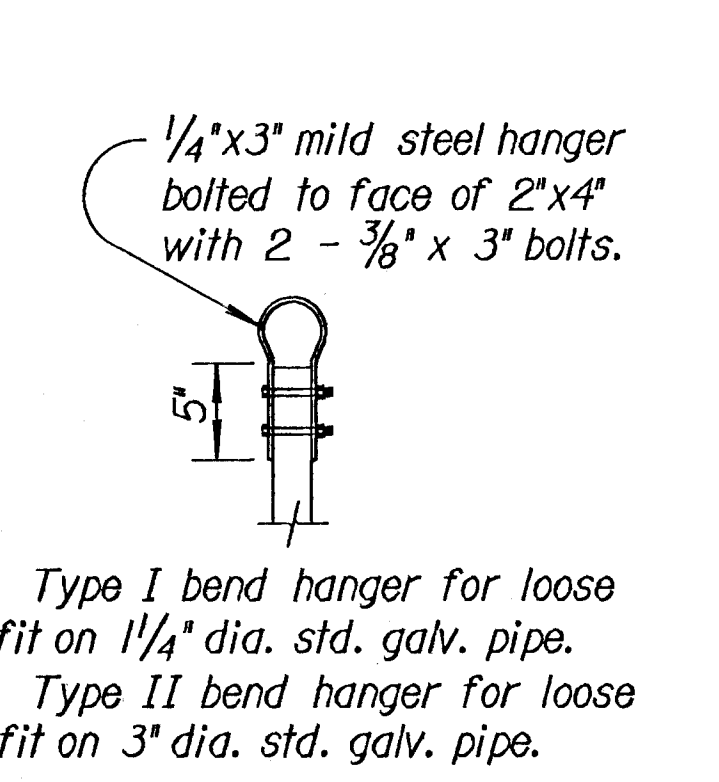
FENCE DETAILS
AT DRAINAGE STRUCTURES
(Type A, B, or Barbed wire fence.)



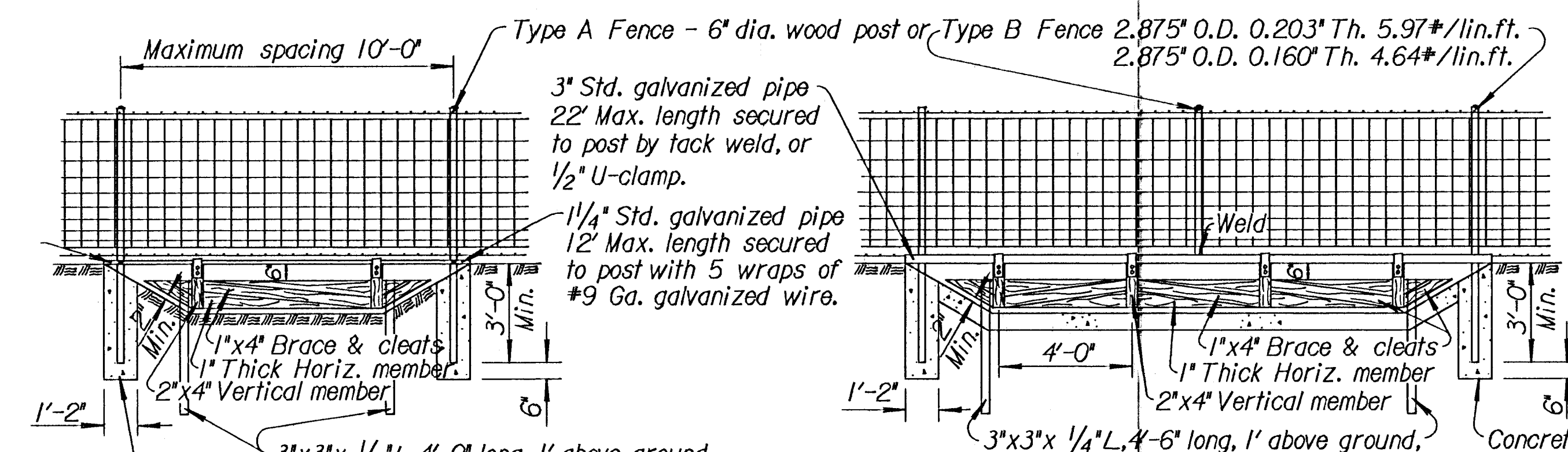
STEEL POST (ALTERNATE)
Steel posts may be used in lieu of wood posts as shown above.



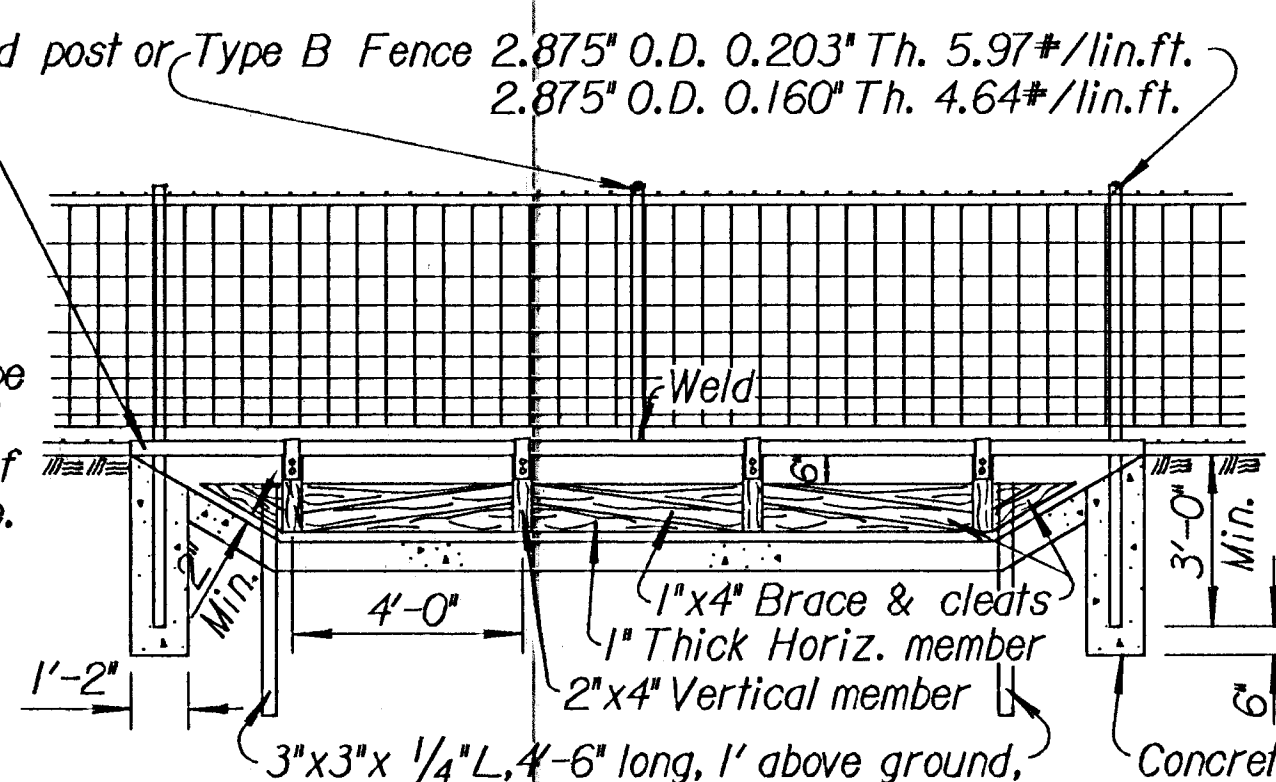
FENCE DETAILS
AT BRIDGE ABUTMENTS
(Use appropriate post and brace for fence type, dimensions are common for all fence types.)



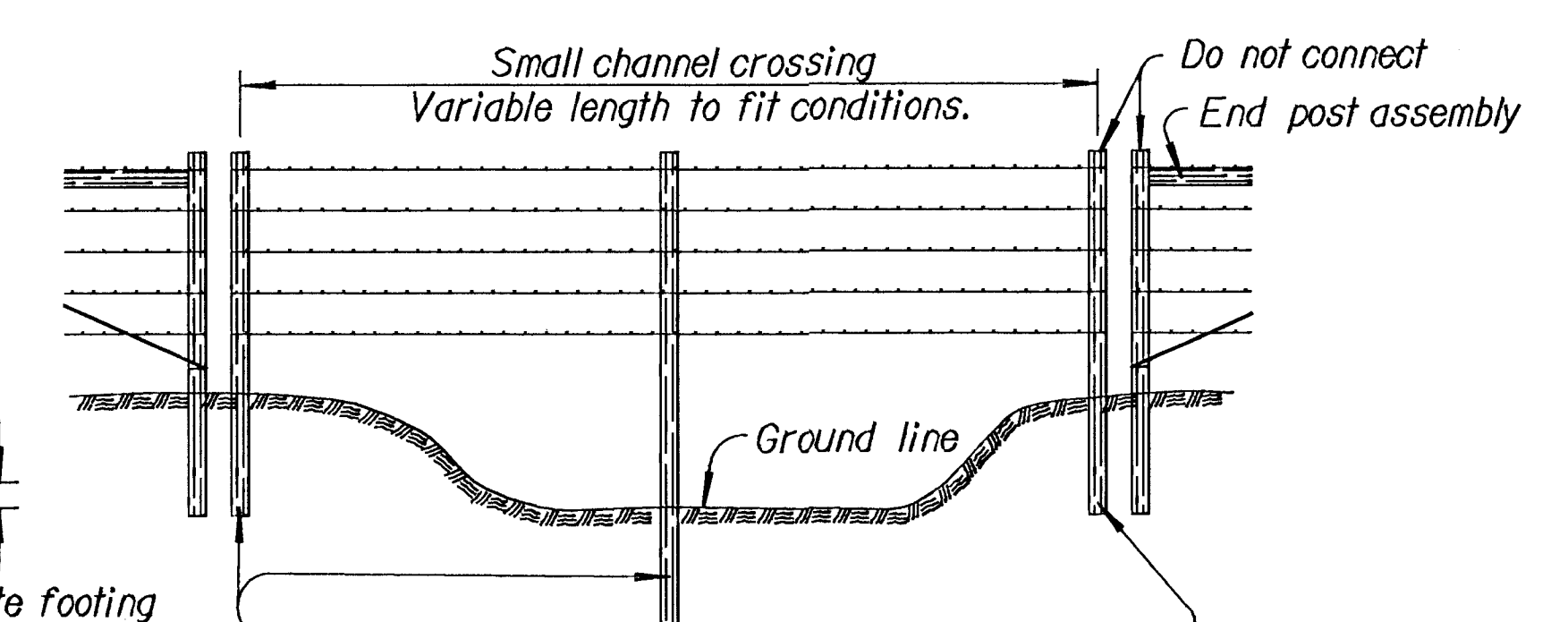
FLOODGATE HANGER DETAIL



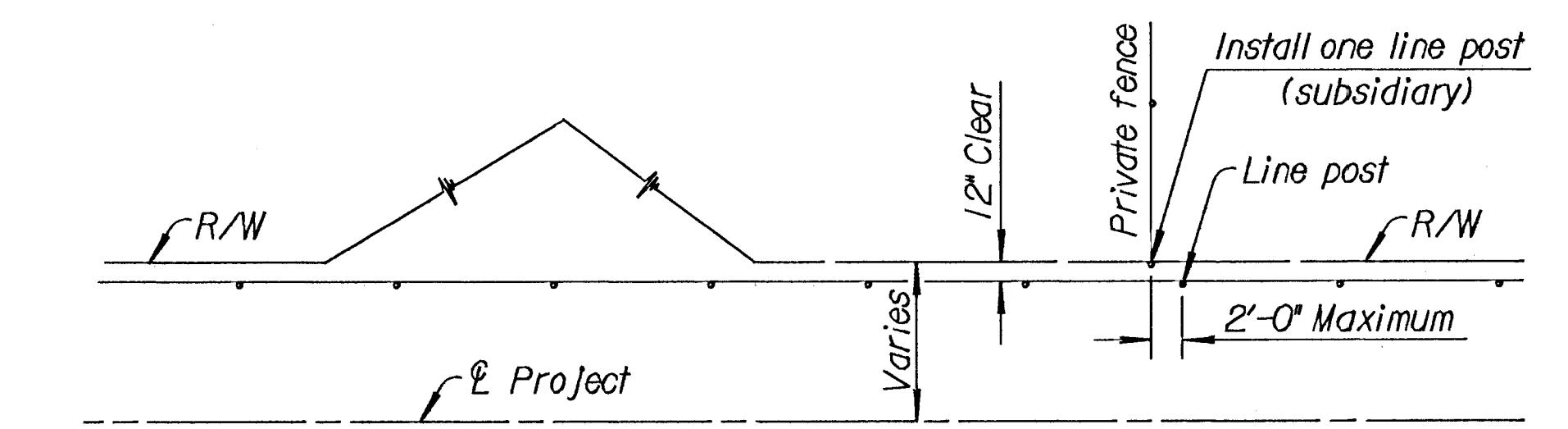
TYPE I FLOODGATE



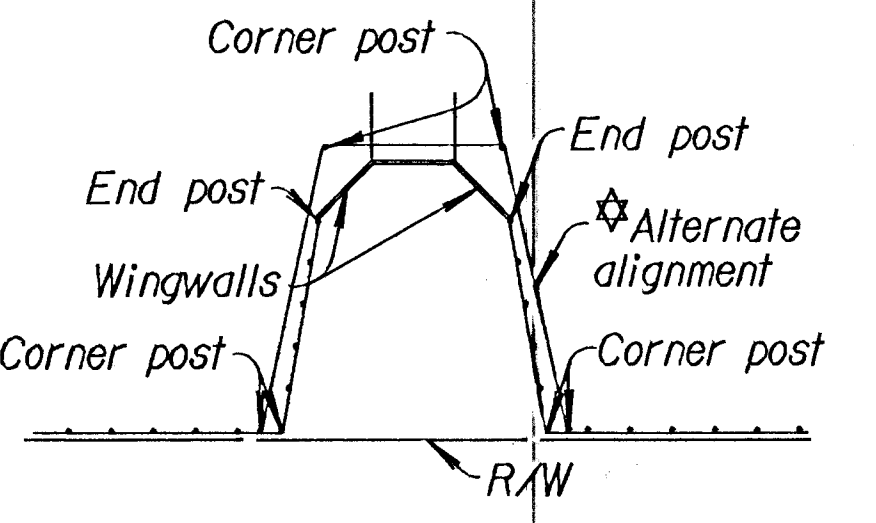
TYPE II FLOODGATE
(Grouted stone or concrete lined ditch.)



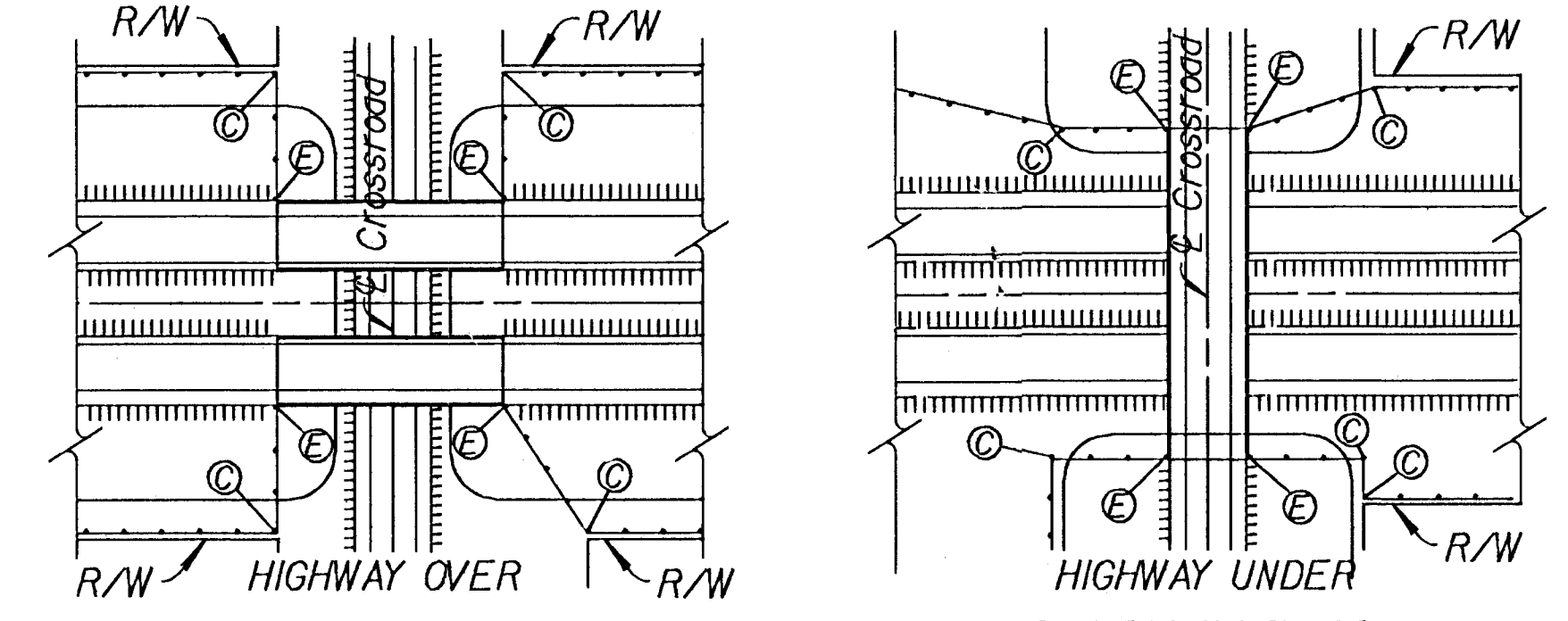
SMALL CHANNEL CROSSING
The above sketch is typical only and can be varied to fit existing conditions. Small channel crossings shall be included in lin. ft. of fence. All extra materials and labor within the small channel crossing shall be subsidiary to lin. ft. of fence.



TYPICAL INSTALLATION DIAGRAM
Note: Right of Way fence shall generally be set parallel to and 12' clear from the Right of Way line.
The alignment layouts as shown are typical, but are not representative of all situations that may occur. Construction may be varied, as required to meet field conditions and/or as directed by the Engineer.
Private fence shall not be connected to the highway fence.



FENCE ALIGNMENT
AT UNDERPASS OR
BOX DRAINAGE STRUCTURE
* Alternate alignment may be used at deep under-fill culverts, as directed by the Engineer.



FENCE ALIGNMENT AT BRIDGE ABUTMENTS

GENERAL NOTE
A line post shall be used at each cross fence, and the contractor shall make a temporary connection. This work shall be subsidiary to other bid items.
In general, where needed, use small channel crossing as shown, Type I and Type II Floodgates will be used very seldom.

NO.	DATE	REVISIONS	BY	APP'D
KANSAS DEPARTMENT OF TRANSPORTATION				
INSTALLATION DETAILS BARBED, WOVEN, & CHAIN LINK				
RD670B				
FHWA APPROVAL	8-28-92	APP'D	James O. Brewer	
DESIGNED	DETAIL ED	QUANTITIES	TRACED	B.N.B.
DESIGN CK.	DETAIL CK.	QUAN. CK.	TRACE CK.	R.J.S.

Design File: I:\5590\pbase\kco\trns\rd670b.dgn
 Plotted on: 15-JUL-1996
 Plot Scale: 5.000000/0.000000
 Pen Table: I:\5590\pbase\ventr\table\color.tbl