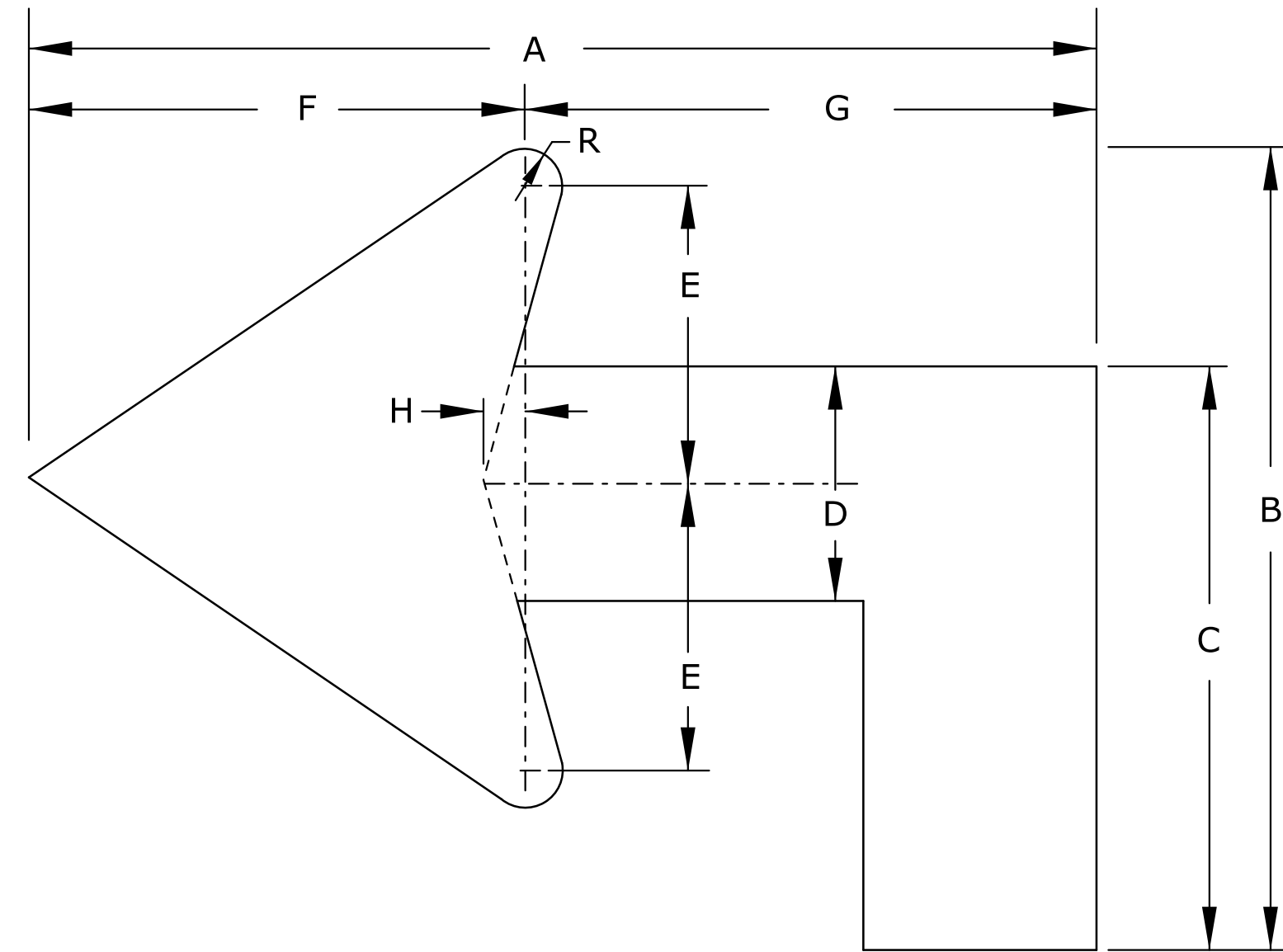


ARROW DIMENSIONS (INCHES)

LETTER HEIGHT	A	B	C	D	E	F	R
4"	4	3 1/4	1 1/2	7/32	6	3	5/16
6"	6	4 7/8	2 1/4	5/16	9	4 1/2	7/16
8"	8	6 1/2	3	7/16	12	6	5/8

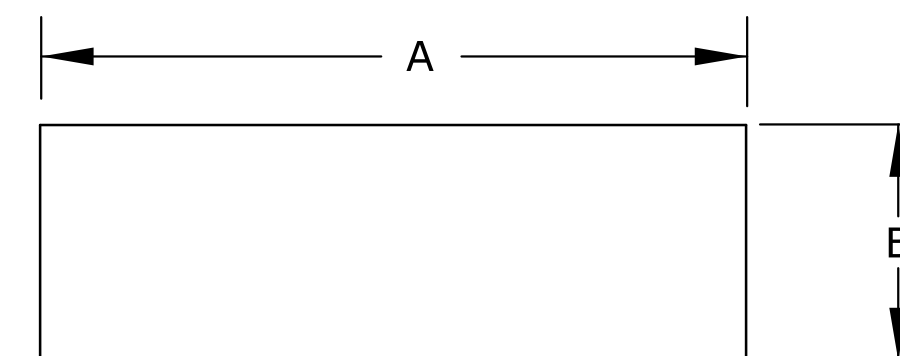
STANDARD ARROW



ARROW DIMENSIONS (INCHES)

LETTER HEIGHT	A	B	C	D	E	F	G	H	R
6"	10 1/8	7 1/2	5 5/8	2 1/4	2 9/16	4 1/2	5 5/8	5/16	7/16
8"	13 1/2	10	7 1/2	3	3 3/8	6	7 1/2	7/16	5/8

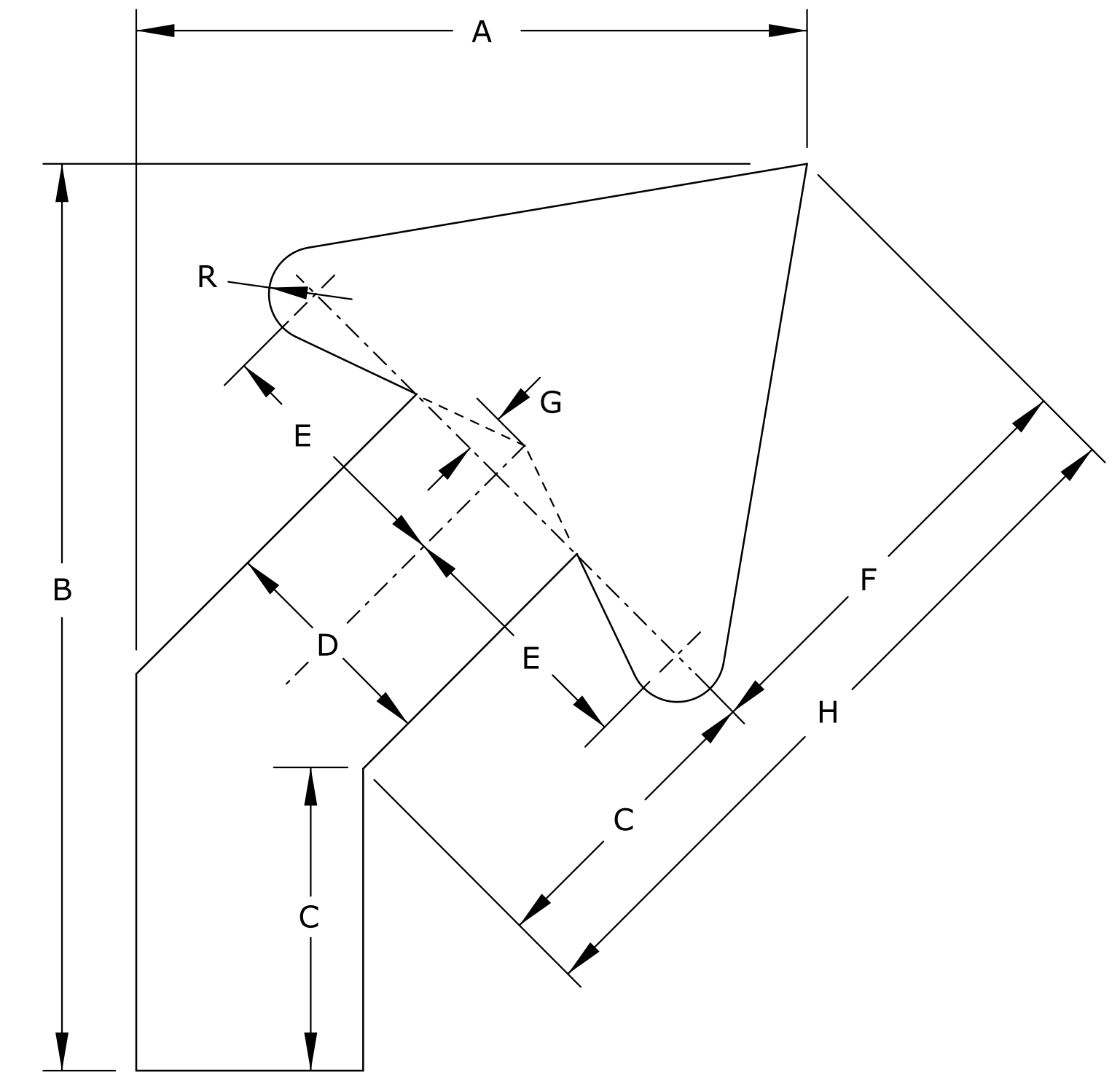
ADVANCE TURN (90°)



HYPHEN DIMENSIONS (INCHES)

LETTER HEIGHT	A	B
6"	3	1
8"	4 1/2	1 1/2
10.67"	6	2
13.33"	7 1/2	2 1/2
16"	9	3

HYPHEN



ARROW DIMENSIONS (INCHES)

LETTER HEIGHT	A	B	C	D	E	F	G	H	R
6"	6 3/4	9	3	2 1/4	65	4 1/4	5/16	7 1/2	7/16
8"	9	12	3 13/16	3	3 3/8	6	11	10	5/8

ADVANCE TURN (45°)

NOTE:
SEE STANDARD PLAN SHEET TE590 FOR DETAILED SPECIFICATIONS.

ALL DIMENSIONS ARE IN INCHES.

NO.	DATE	REVISIONS	BY	APP'D

KANSAS DEPARTMENT OF TRANSPORTATION
GUIDE SIGN
LEGEND DETAILS
ARROWS AND HYPHENS

TE563 7/1/03

DESIGNED	D.D.G. DETAILED	W.S.B. QUANTITIES	TRACED
DESIGN CK.	S.A.B. DETAIL CK.	D.D.G. QUAN. CK.	TRACE CK.