

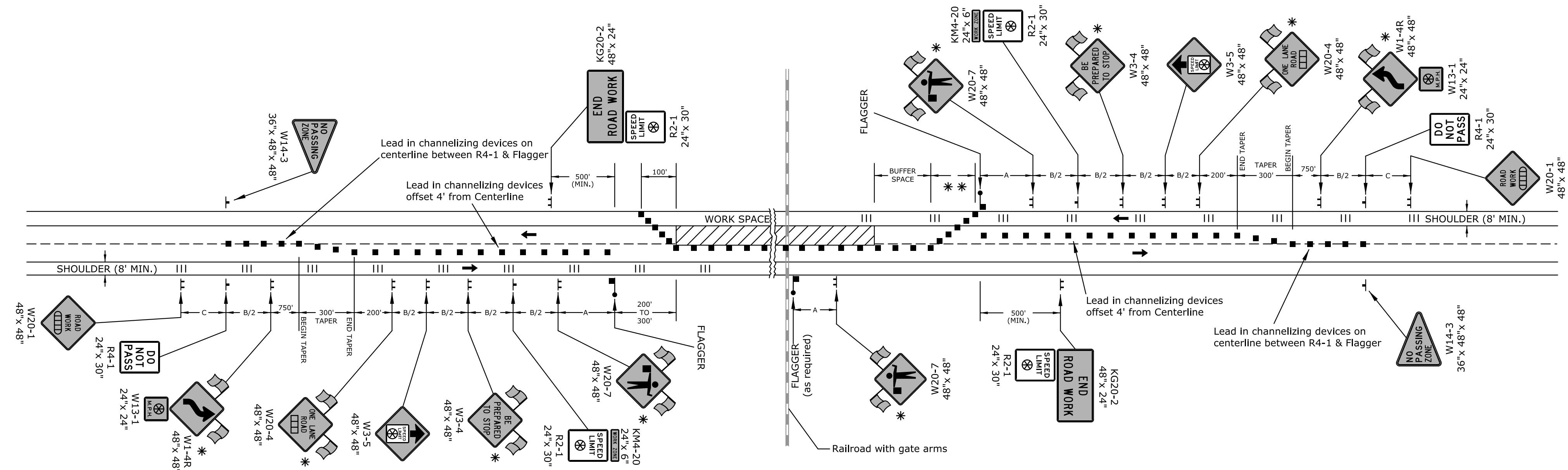
Refer to Std Dwg TE710 for additional information on temporary traffic control signs, sign spacing and conflicting signs.

Refer to Std Dwg TE702 for information on tapers and channelizing devices.

Refer to Std Dwg TE700 for length of buffer space.

STATE	PROJECT NO.	YEAR	SHEET NO.	TOTAL SHEETS
KANSAS	87 TE-0396-01	2014	66	68

### FLAGGER



**Notes:**

Trucks hauling material to the project shall STOP at Flagger. After stopping, upon approval of the Engineer, trucks may be allowed to move around Flagger.

Place a Flagger at all highway, major collector intersections or railroads with gate arms in the work space. Place a Flagger at all railroads with at-grade intersections with lights and gates in the work space to control traffic crossing the tracks to the left of the gate arm. A single Flagger at each intersection is subsidiary to other items. The need for a Flagger at minor side road intersections shall be determined by the Engineer. If requested by the Engineer, each additional Flagger will be measured and paid for each hour they are required. Place a W20-7 (Flagger symbol) sign on each side road that is controlled by a Flagger.

Existing signs shall not be covered or removed between Flagger stations.

\* When applicable, use Type "A" low intensity warning lights for nighttime operations only or as directed by the Engineer.

\* \* Minimum six (6) channelizers spaced at 20' intervals.

- Channelizing Device
- ▭ AHEAD, 1500 FT, OR 1 MILE
- ▭ AHEAD, 1000 FT, 1500 FT, OR 1/2 MILE
- ⊗ Speed to be determined by the Engineer
- Type "A" low intensity warning light
- III Existing shoulder rumble strips

3	9/4/13	Added Flagger For Railroads	J.A.M.	K.E.
2	10/16/12	Modified Lead in Channelizer Note	J.A.M.	K.E.
1	10/4/11	Removed Conflicting Signs Note	J.A.M.	K.E.
NO.	DATE	REVISIONS	BY	APP'D

**KANSAS DEPARTMENT OF TRANSPORTATION**  
**TYPICAL TRAFFIC CONTROL FLAGGER OR PILOT CAR**  
**TWO-LANE ONE LANE CLOSED**  
**CONCRETE SHOULDERS EQUAL TO OR GREATER**  
**THAN 8 FT WITH OR WITHOUT RUMBLE STRIPS**

~~TE731~~ SHEET 1 OF 2

FHWA APPROVAL	9/4/13	APP'D	Kristina Ericksen
DESIGNED	DETAILED	QUANTITIES	TRACED
DESIGN CK.	J.A.M. DETAIL CK.	J.A.M. QUAN. CK.	TRACE CK.