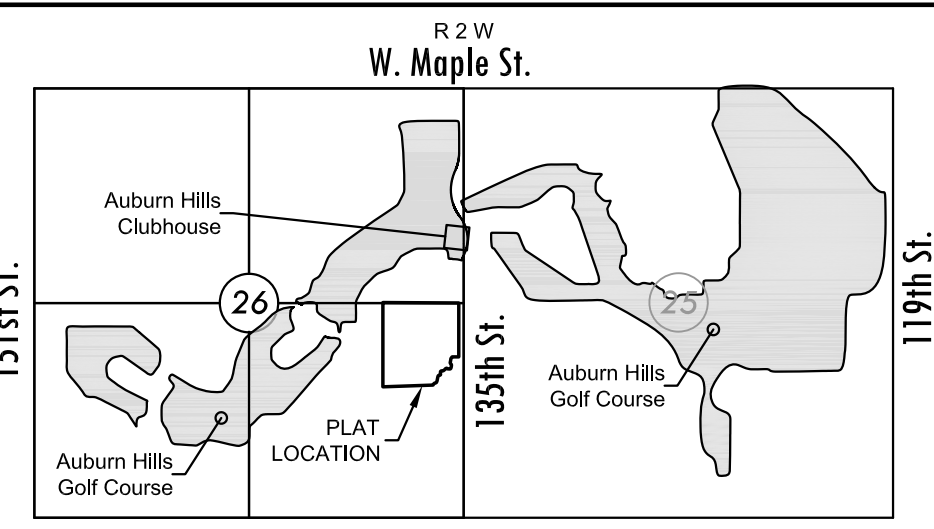


FINAL PLAT

COURTYARDS AT AUBURN HILLS

AN ADDITION TO WICHITA, SEDGWICK COUNTY, KANSAS



VICINITY MAP
BENCHMARK

Square Cut on east nose of center island, 50 feet west of 135th Street West and Onewood Street intersection. Elev.=1350.35 NAVD88 Datum.

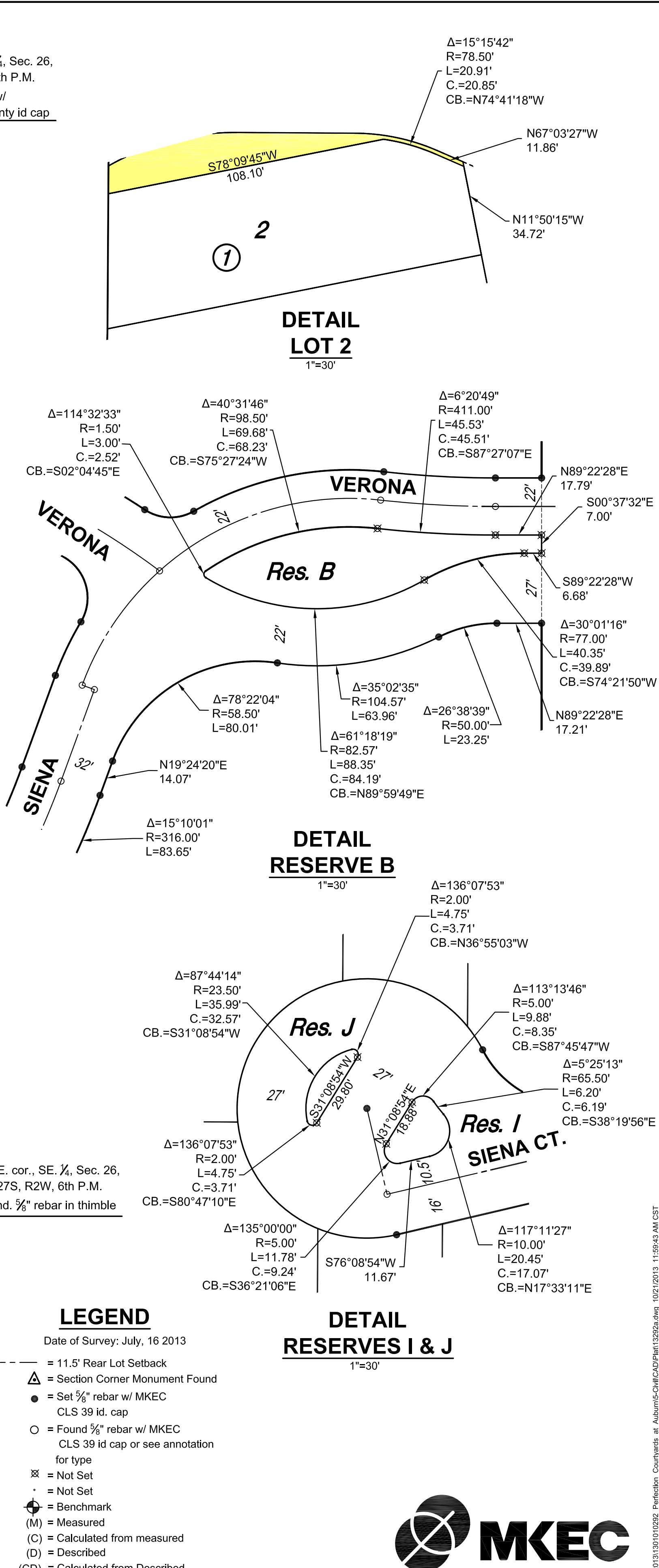
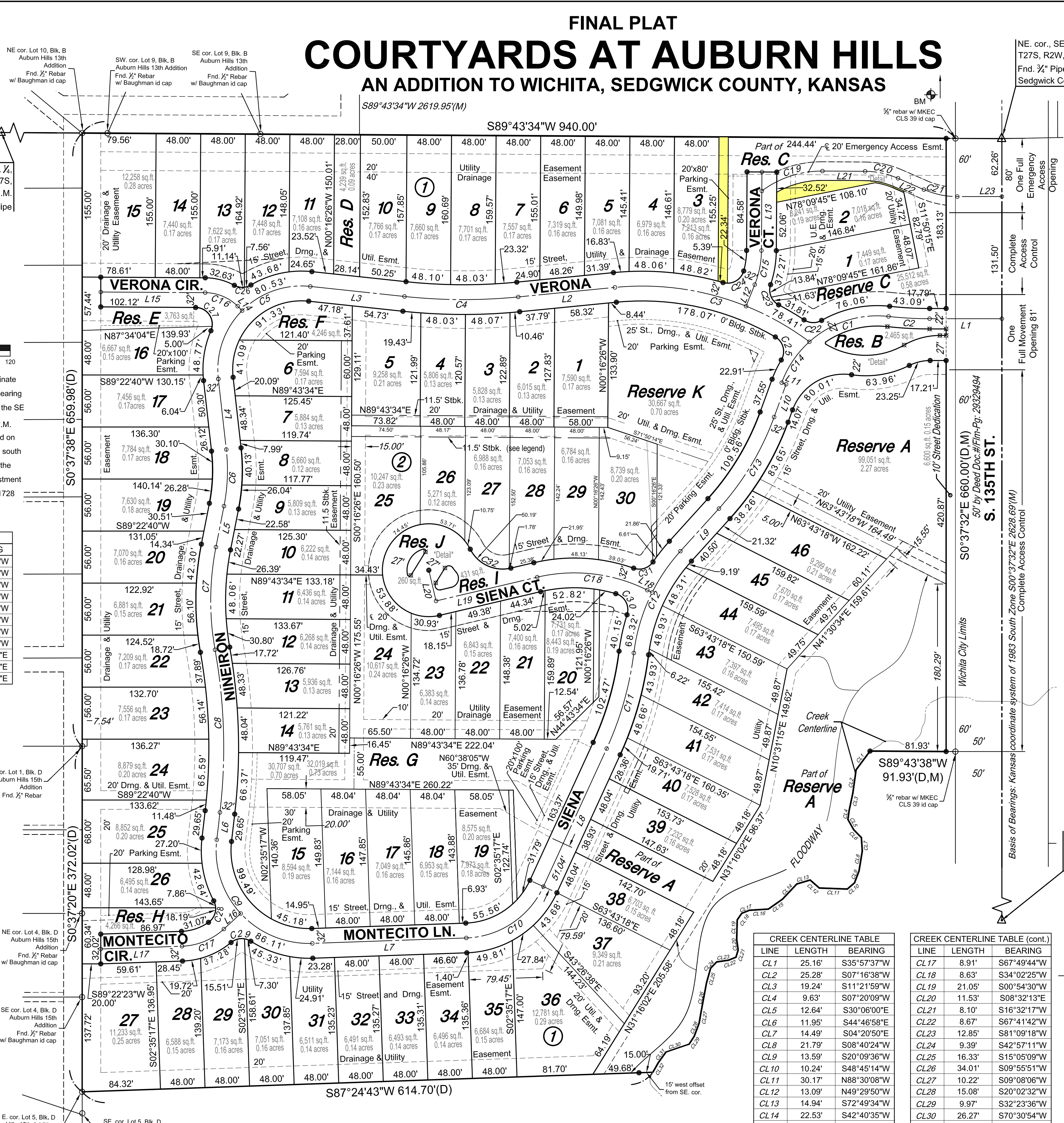
LOT	BLOCK	ELEVATION NAVD88
35	1	1349.7
36	1	1350.2
37	1	1348.7
38	1	1348.1
39	1	1347.6
40	1	1347.6
41	1	1347.2
42	1	1346.8
43	1	1346.3
44	1	1346.0
45	1	1346.0
46	1	1353.4

LINE	LENGTH	BEARING
L1	77.79'	N89°22'28"E
L2	104.55'	S83°44'51"W
L3	101.92'	N84°32'01"W
L4	76.42'	S07°03'47"E
L5	44.86'	S10°29'25"W
L6	29.65'	S06°02'29"W
L7	165.88'	N87°21'41"E
L8	163.37'	N24°00'32"E
L9	61.82'	N41°30'34"E
L10	37.55'	N19°24'20"E
L11	5.00'	N70°35'40"W
L12	24.99'	N21°15'20"E

LINE	LENGTH	BEARING
L13	84.58'	N00°16'26"W
L14	6.78'	N45°47'54"W
L15	112.41'	S89°43'34"W
L16	24.67'	S46°42'05"W
L17	87.52'	S87°24'43"W
L18	5.82'	N63°59'45"W
L19	111.87'	S76°08'54"W
L20	34.00'	N13°51'06"W
L21	45.90'	N89°43'34"E
L22	30.39'	S67°03'27"E
L23	47.96'	N89°22'29"E

CURVE	LENGTH	RADIUS	CHORD	BEARING	DELTA
C1	92.13'	109.50'	89.43'	S71°37'08"W	48°12'19"
C2	44.31'	400.00'	44.29'	S87°27'08"E	6°20'49"
C3	222.44'	300.00'	217.38'	N75°00'40"W	42°28'58"
C4	122.72'	600.00'	122.51'	N89°36'25"E	11°43'08"
C5	161.05'	90.00'	140.41'	S44°12'06"W	102°31'46"
C6	61.27'	200.00'	61.03'	N01°42'49"E	17°33'12"
C7	111.18'	300.00'	110.55'	S00°07'37"E	21°14'04"
C8	175.78'	600.00'	175.15'	N02°21'05"W	16°47'08"
C9	172.23'	100.00'	151.72'	S43°17'55"E	98°40'48"
C10	105.04'	95.00'	99.77'	N55°41'07"E	63°21'08"
C11	107.38'	350.00'	106.96'	N15°13'12"E	17°34'40"
C12	122.45'	200.00'	120.54'	S23°58'13"W	35°04'42"
C13	115.74'	100.00'	115.02'	N30°27'27"E	22°06'14"
C14	53.72'	300.00'	53.19'	S33°27'39"W	28°06'39"
C15	37.58'	100.00'	37.36'	N10°29'27"E	21°31'46"
C16	38.81'	50.00'	37.84'	N68°02'10"W	44°28'31"
C17	49.74'	70.00'	48.70'	N67°03'24"E	40°42'38"
C18	121.73'	175.00'	119.29'	N83°55'26"W	39°51'21"
C19	69.91'	108.17'	68.70'	S71°12'36"W	37°01'58"
C20	36.47'	90.00'	36.22'	N78°39'56"W	23°12'58"
C21	37.02'	90.00'	36.76'	S78°50'29"E	23°34'04"

CURVE	LENGTH	RADIUS	CHORD	BEARING	DELTA
C22	19.88'	18.00'	18.88'	S88°48'19"E	63°16'31"
C23	25.47'	18.00'	23.40'	S22°24'04"E	81°04'13"
C24	28.39'	18.00'	25.54'	N60°09'11"E	90°22'57"
C25	28.47'	18.00'	25.59'	N15°00'49"W	90°37'36"
C26	18.70'	18.00'	17.87'	N88°17'26"E	59°31'24"
C27	35.45'	18.00'	29.99'	N33°51'18"W	112°50'14"
C28	26.05'	18.00'	23.83'	N12°59'52"E	82°54'18"
C29	22.81'	18.00'	21.32'	S85°44'54"W	72°36'51"
C30	28.72'	18.00'	25.77'	N28°38'10"W	91°25'59"
C31	23.54'	18.00'	21.90'	N71°25'06"E	74°55'06"
C32	51.97'	39.00'	48.21'	S65°40'32"E	76°21'07"



LINE	LENGTH	BEARING
CL1	25.16'	S35°57'37"W
CL2	25.28'	S07°16'38"W
CL3	19.24'	S11°21'59"W
CL4	9.63'	S07°20'09"W
CL5	12.64'	S30°06'00"E
CL6	11.95'	S44°46'58"E
CL7	14.49'	S04°20'50"E
CL8	21.79'	S08°40'24"W
CL9	13.59'	S20°09'36"W
CL10	10.24'	S48°45'14"W
CL11	30.17'	N88°30'08"W
CL12	13.09'	N49°29'50"W
CL13	14.94'	S72°49'34"W
CL14	22.53'	S42°40'35"W
CL15	18.56'	S54°21'18"W
CL16	20.36'	S85°52'57"W

LINE	LENGTH	BEARING
CL17	8.91'	S67°49'44"W
CL18	8.63'	S34°02'25"W
CL19	21.05'	S00°54'30"W
CL20	11.53'	S08°32'13"E
CL21	8.10'	S16°32'17"W
CL22	8.67'	S67°41'42"W
CL23	12.85'	S81°09'18"W
CL24	9.39'	S42°57'11"W
CL25	16.33'	S15°05'09"W
CL26	34.01'	S09°55'51"W
CL27	10.22'	S09°08'06"W
CL28	15.08'	S20°02'32"W
CL29	9.97'	S32°23'36"W
CL30	26.27'	S70°30'54"W
CL31	13.84'	S35°23'47"W
CL32	12.20'	S28°53'16"W

LEGEND
Date of Survey: July, 16 2013

- = 11.5' Rear Lot Setback
- △ = Section Corner Monument Found
- = Set 5/8" rebar w/ MKEC CLS 39 id cap
- = Found 5/8" rebar w/ MKEC CLS 39 id cap or see annotation for type
- ⊗ = Not Set
- ⊙ = Not Set
- ⊕ = Benchmark
- (M) = Measured
- (C) = Calculated from measured
- (D) = Described
- (CD) = Calculated from Described
- (P) = Platted

DETAIL RESERVES I & J
1"=30'

Wichita, KS • 316.684.9600