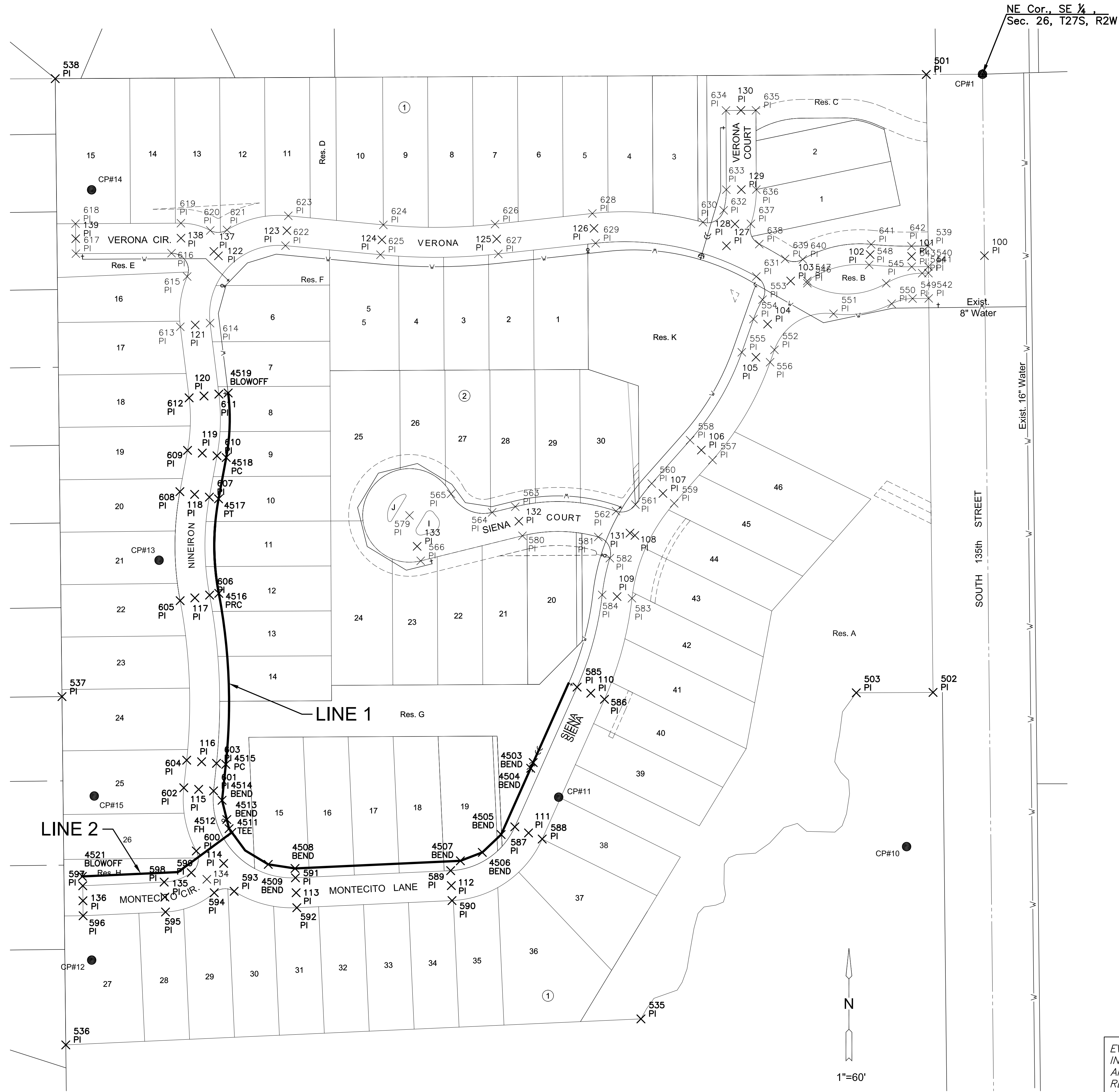


PLOTTED: Thursday, June 04, 2015 @ 11:01 AM



NE Cor., SE 1/4,
Sec. 26, T27S, R2W

WATER POINTS			
Point #	Northing	Easting	Desc.
4500	1679297.06	1601900.95	BLOWOFF
4501	1679225.85	1601869.23	BEND
4502	1679221.53	1601867.31	BEND
4503	1679212.40	1601863.24	BEND
4504	1679206.32	1601860.53	BEND
4505	1679135.54	1601829.00	BEND
4506	1679116.45	1601808.89	BEND
4507	1679107.48	1601785.49	BEND
4508	1679099.34	1601608.92	BEND
4509	1679103.66	1601580.37	BEND
4510	1679118.58	1601555.65	BEND
4511	1679137.80	1601541.49	TEE
4512	1679151.53	1601536.12	FH
4513	1679141.82	1601538.52	BEND
4514	1679172.13	1601531.03	BEND
4515	1679210.53	1601535.04	PC
4516	1679393.12	1601527.55	PRC
4517	1679494.08	1601527.32	PT
4518	1679538.19	1601535.49	PC
4519	1679607.13	1601537.55	BLOWOFF
4520	1679095.44	1601484.01	BEND
4521	1679090.82	1601381.88	BLOWOFF

BASELINE POINTS			
Point #	Northing	Easting	Desc.
110	1679286.48	1601924.70	PI
111	1679137.25	1601858.23	PI
112	1679081.00	1601775.82	PI
113	1679073.37	1601610.12	PI
114	1679104.68	1601532.73	PI
115	1679183.78	1601506.07	PI
116	1679213.27	1601509.19	PI
117	1679388.27	1601502.00	PI
118	1679498.82	1601501.76	PI
119	1679542.93	1601509.93	PI
120	1679603.93	1601511.75	PI
135	1679068.77	1601469.93	PI
136	1679064.82	1601382.50	PI

PLAT POINTS			
Point #	Northing	Easting	Desc.
501	1679947.27	1602282.90	PI
502	1679287.31	1602290.10	PI
503	1679286.92	1602208.17	PI
535	1678938.64	1601978.25	PI
536	1678910.89	1601364.18	PI
537	1679282.88	1601360.13	PI
538	1679942.83	1601352.91	PI
585	1679292.99	1601910.08	PI
586	1679279.97	1601939.32	PI
587	1679143.76	1601843.61	PI
588	1679130.74	1601872.84	PI
589	1679096.99	1601775.08	PI
590	1679065.02	1601776.56	PI
591	1679089.35	1601609.38	PI
592	1679057.38	1601610.85	PI
593	1679074.95	1601543.95	PI
594	1679073.37	1601522.69	PI
595	1679052.79	1601470.65	PI
596	1679048.81	1601382.68	PI
597	1679080.83	1601382.33	PI
598	1679084.76	1601469.21	PI
599	1679094.77	1601498.17	PI
600	1679117.99	1601503.53	PI
601	1679182.10	1601521.98	PI
602	1679185.47	1601490.16	PI
603	1679211.58	1601525.10	PI
604	1679214.95	1601493.28	PI
605	1679385.29	1601486.28	PI
606	1679391.25	1601517.72	PI
607	1679495.91	1601517.49	PI
608	1679501.73	1601486.03	PI
609	1679545.84	1601494.19	PI
610	1679540.01	1601525.66	PI
611	1679605.90	1601527.63	PI
612	1679601.97	1601495.87	PI

CONTROL POINTS

CP #1
3/4" pipe with Sedgwick County cap
N = 1679947.56 E = 1602342.90
Southeast 1/4 corner Section 26, T 27 S, R 2 W.

CP #10
5/8" rebar with MKEC aluminum cap set flush to the ground
N = 1679728.88 E = 1602266.44
218 feet south and 79 feet west of the East 1/4 corner
Section 26, T 27 S, R 2 W.

CP #11
5/8" rebar with red cap "MKEC CONTROL PT"
N = 1679175.49 E = 1601890.42
770 feet south and 461 feet west of the East 1/4 corner
Section 26, T 27 S, R 2 W.

CP #12
5/8" rebar with red cap "MKEC CONTROL PT"
N = 1679001.45 E = 1601391.84
941 feet south and 961 feet west of the East 1/4 corner
Section 26, T 27, R 2 W.

CP #13
5/8" rebar with red cap "MKEC CONTROL PT"
N = 1679428.52 E = 1601463.78
515 feet south and 885 feet west of the East 1/4 corner
Section 26, T 27 S, R 2 W.

CP #14
5/8" rebar with red cap "MKEC CONTROL PT"
N = 1679824.11 E = 1601391.76
119 feet south and 952 feet west of the East 1/4 corner
Section 26, T 27 S, R 2 W.

CP #15
5/8" rebar with red cap "MKEC CONTROL PT"
N = 1679176.70 E = 1601394.58
766 feet south and 957 feet west of the East 1/4 corner
Section 26, T 27 S, R 2 W.

Horizontal Datum: Kansas Coordinate System 1983 South
Zone (Modified to ground using a scale factor of
1.000120014)

EVERY ATTEMPT HAS BEEN MADE TO
INSURE ALL COORDINATE VALUES SHOWN
ARE AN ACCURATE AND TRUE
REPRESENTATION OF THE CURRENT PLANS.
ALL VALUES ARE TO BE CONFIRMED WITH
THE FINAL SIGNED PLAN SET BEFORE USE.

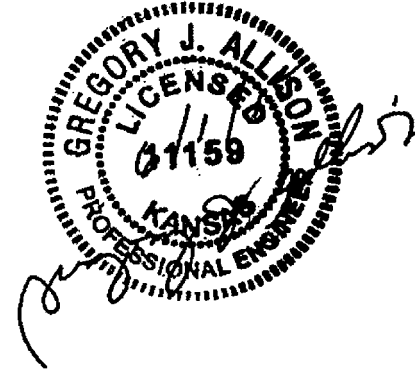


WATER DISTRIBUTION PLANS FOR
COURTYARDS AT AUBURN HILLS
PHASE 2

©2013
MKEC Engineering
All Rights Reserved
www.mkec.com
These drawings and their contents,
including, but not limited to, all concepts,
designs, & ideas are the exclusive
property of MKEC Engineering (MKEC),
and may not be used or reproduced in any
way without the express consent of MKEC.

BUBBLE MAP

PROJECT NO.	448-90617
DATE	JUNE 2015
SCALE	AS SHOWN
DESIGNED	DFL
DRAWN	JWC
CHECKED	SLF
NO.	1
REVISION	PC & PTS
DATE	03/18/14



J:\PROJECTS\2013\1010292_PERFECTION_COURTYARDS_AT_AUBURNHILLS\CAD\DWG\PHASE 2\13292_CB-01.DWG