

©2015 MKEC Engineering All Rights Reserved
www.mkec.com
These drawings and their contents, including, but not limited to, all concepts, designs, & ideas are the exclusive property of MKEC Engineering (MKEC), and may not be used or reproduced in any way without the express consent of MKEC.

SWS LINES 2 & 2A

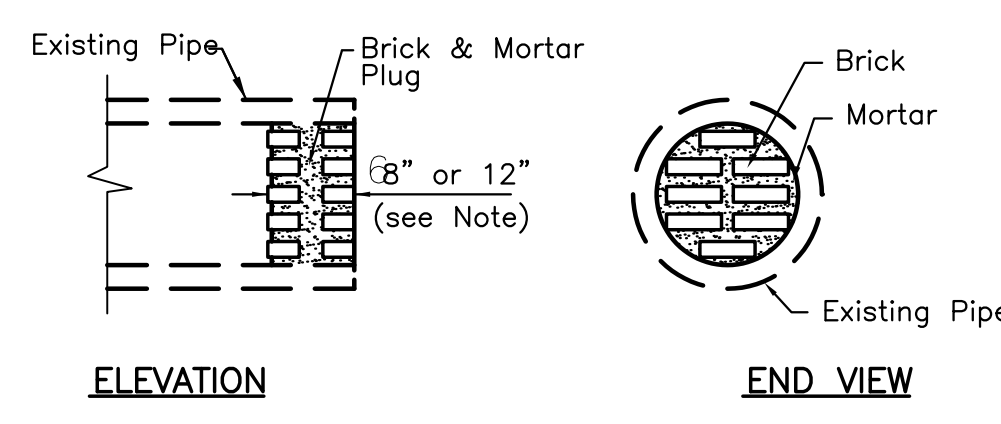
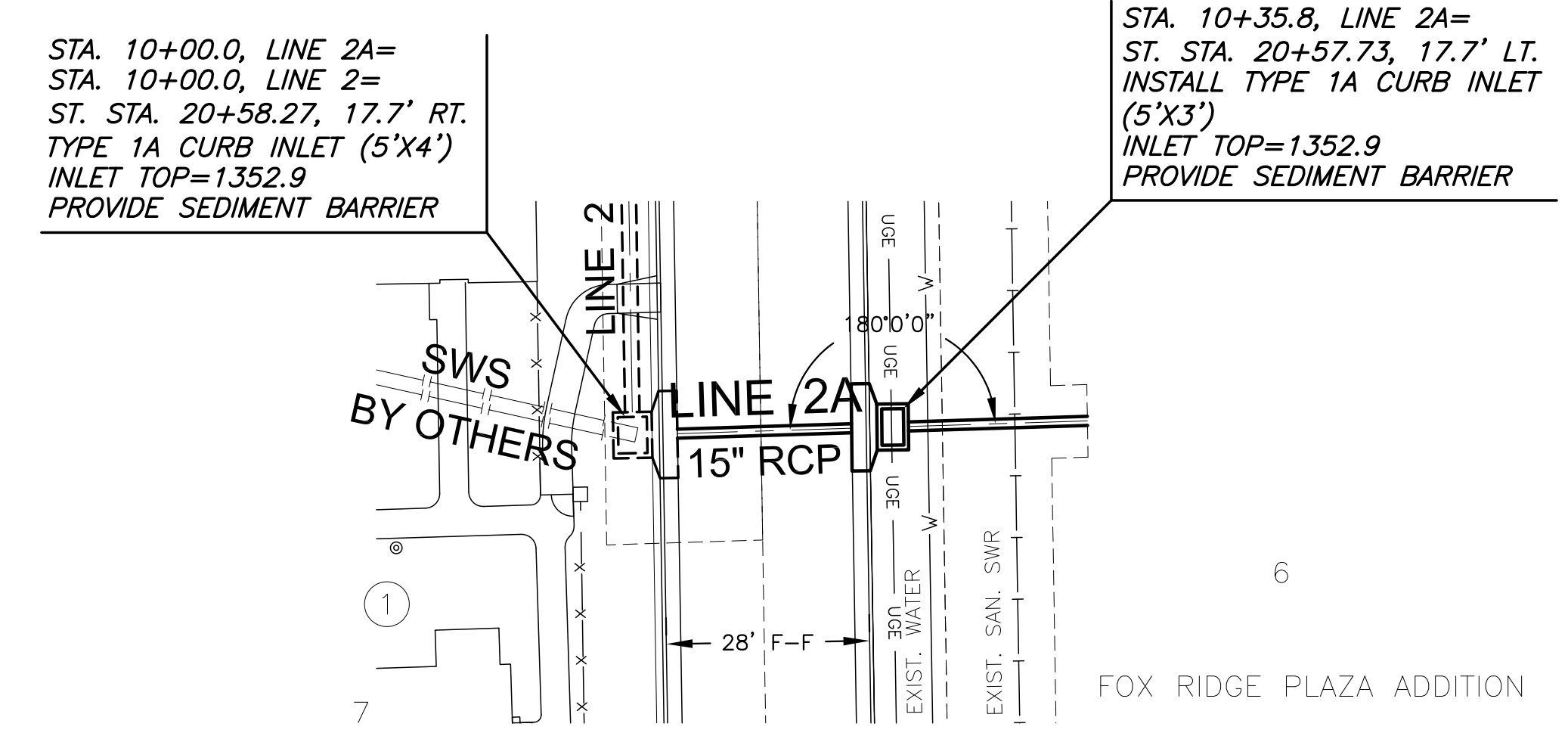
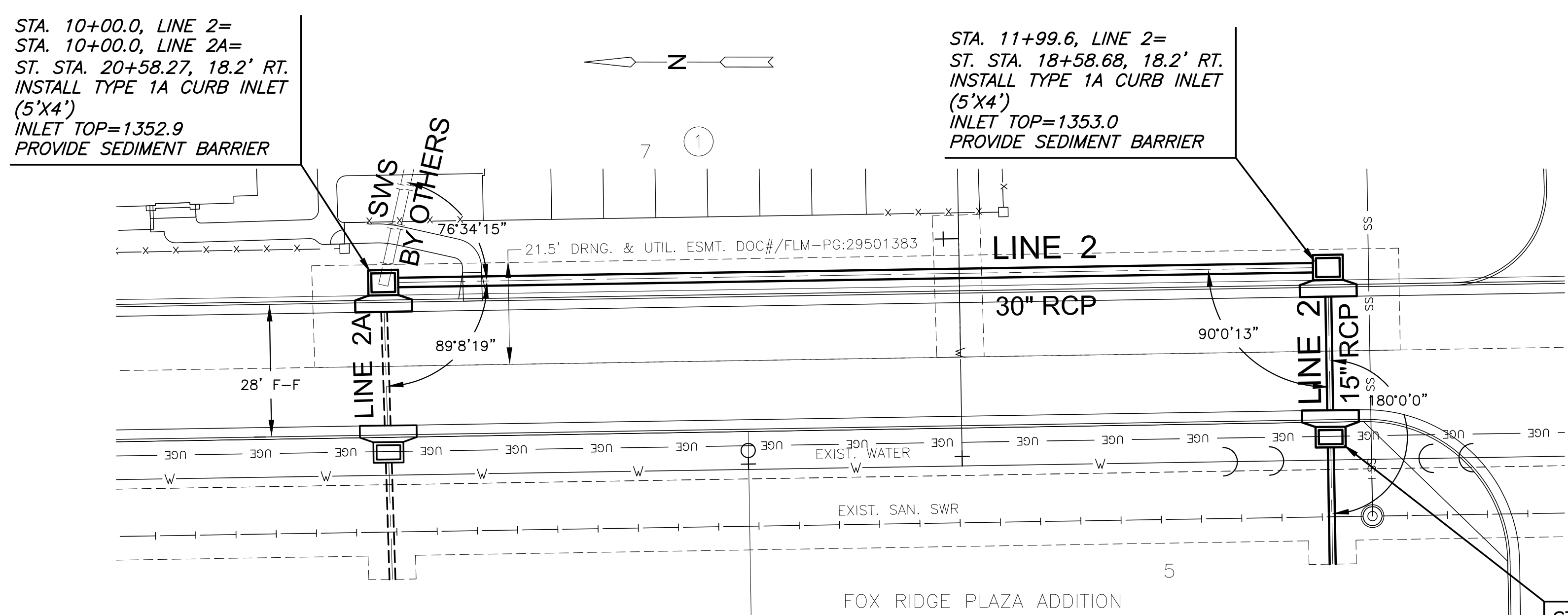
| | | |
|-------------|-----------|---------|
| PROJECT NO. | 468-84952 | |
| DATE | JUNE 2015 | |
| SCALE | 1" = 20' | |
| DESIGNED | DRAWN | CHECKED |
| DFL | JWC | SLF |

| NO. | REVISION | DATE |
|-----|----------|------|
| | | |

SHEET NO.

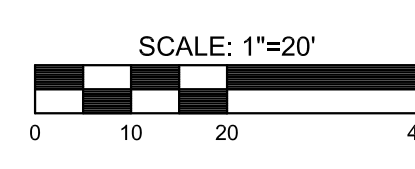
PLOTTED: Wednesday, June 17, 2015 @ 09:51 AM

J:\PROJECTS\2011101010577 - PREMIER FOX RIDGE PLAZA\SWS\11577_DP-05.DWG



Note:
Pipe Plugs Shall Be Constructed Of Brick Masonry, With Construction Requirements And Materials Conforming To The Same Requirements As Specified For A Masonry Construction In The Std. Specs. Pipes Having Diameters Of 18" Or Smaller Shall Be Plugged With 8" Thick Plug. Pipes Having Diameters Larger Than 18" Shall Be Plugged With 12" Thick Plug. The Construction Of Pipe Plugs Shall Not Be Paid For Directly, But Shall Be Considered Subsidiary To Pipe Installation.

The Contractor May Use Other Methods To Plug Existing Pipe If Approved By The Project Engineer.



PLAN LINE 2
PROFILE LINE 2

PLAN LINE 2A
PROFILE LINE 2A

