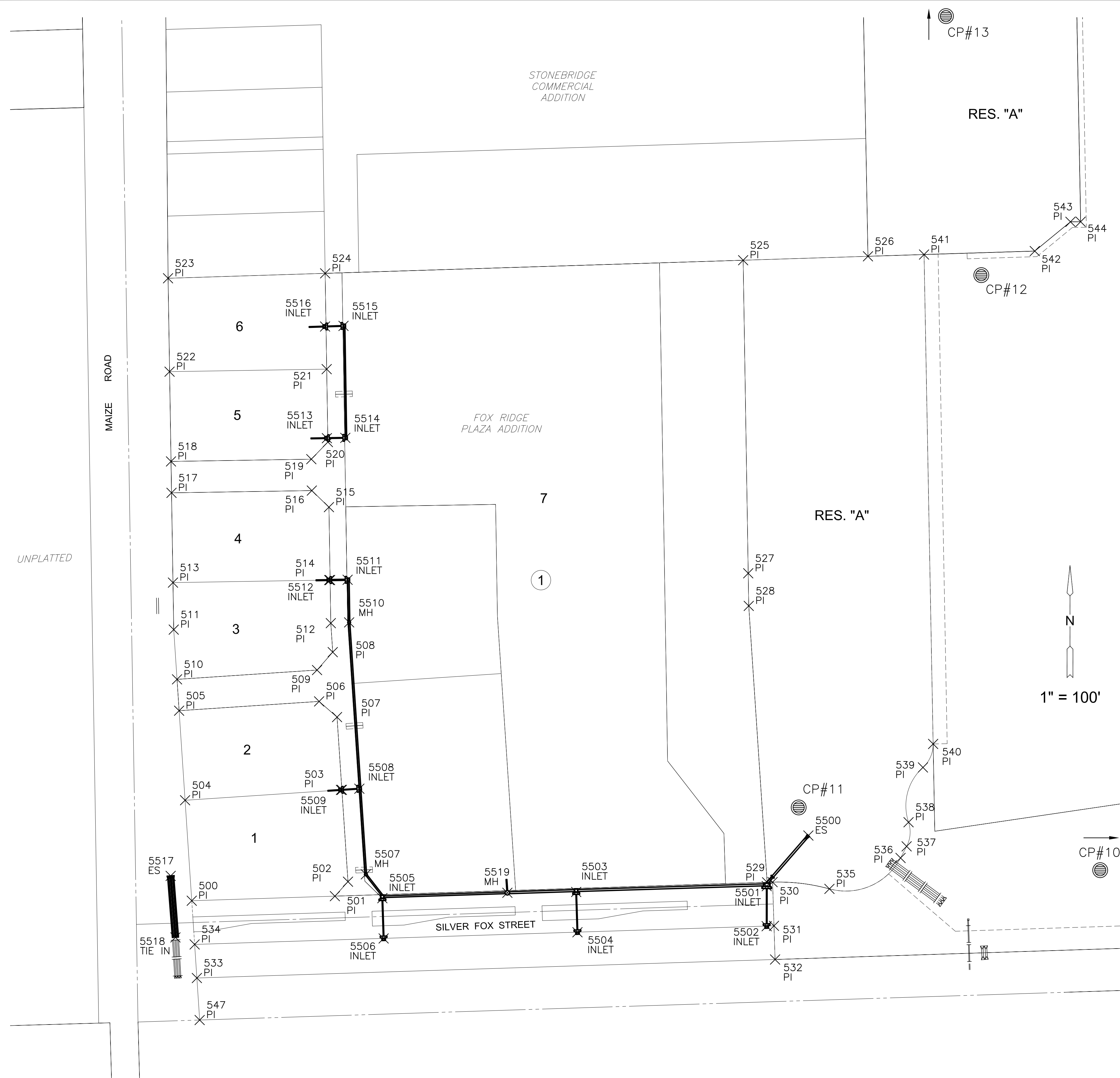


PLOTTED: Wednesday, June 17, 2015 @ 09:53AM



PLAT POINTS			
Point #	Northing	Easting	Desc.
500	1706858.49	1612504.68	PI
501	1706866.67	1612759.72	PI
502	1706892.42	1612783.05	PI
503	1707056.11	1612772.18	PI
504	1707037.56	1612492.80	PI
505	1707197.21	1612482.20	PI
506	1707213.77	1612731.65	PI
507	1707185.83	1612763.57	PI
508	1707301.57	1612755.88	PI
509	1707269.65	1612727.94	PI
510	1707253.09	1612478.49	PI
511	1707341.71	1612472.60	PI
512	1707353.26	1612752.45	PI
513	1707425.53	1612471.25	PI
514	1707430.06	1612751.21	PI
515	1707560.04	1612749.10	PI
516	1707589.55	1612718.62	PI
517	1707585.51	1612468.66	PI
518	1707641.50	1612467.75	PI
519	1707645.55	1612717.72	PI
520	1707676.03	1612747.23	PI
521	1707806.01	1612745.12	PI
522	1707801.48	1612465.16	PI
523	1707967.97	1612462.46	PI
524	1707976.76	1612742.36	PI
525	1708000.13	1613487.08	PI
526	1708007.11	1613709.42	PI
527	1707442.12	1613496.11	PI
528	1707383.98	1613497.05	PI
529	1706891.37	1613529.76	PI
530	1706891.68	1613539.52	PI
531	1706813.72	1613542.02	PI
532	1706753.75	1613543.94	PI
533	1706720.72	1612513.83	PI
534	1706780.62	1612509.85	PI
535	1706879.62	1613640.79	PI
536	1706934.68	1613767.50	PI
537	1706955.42	1613778.35	PI
538	1706998.42	1613781.75	PI
539	1707096.06	1613807.38	PI
540	1707137.95	1613825.56	PI
541	1708010.25	1613809.37	PI
542	1708016.44	1614006.65	PI
543	1708068.60	1614070.21	PI
544	1708068.77	1614088.34	PI
545	1709260.97	1614066.22	PI
546	1709249.35	1613686.37	PI
547	1706645.84	1612518.80	PI

STORM WATER SEWER POINTS			
Point #	Northing	Easting	Desc.
5500	1706974.71	1613603.29	ES
5501	1706884.46	1613529.12	INLET
5502	1706813.14	1613528.99	INLET
5503	1706874.12	1613189.60	INLET
5504	1706802.33	1613191.90	INLET
5505	1706863.05	1612844.27	INLET
5506	1706791.25	1612846.57	INLET
5507	1706905.52	1612814.88	MH
5508	1707058.18	1612803.28	INLET
5509	1707056.00	1612770.52	INLET
5510	1707354.60	1612785.10	MH
5511	1707430.57	1612782.37	INLET
5512	1707430.03	1612749.54	INLET
5513	1707682.98	1612745.45	INLET
5514	1707683.52	1612778.28	INLET
5515	1707883.08	1612775.06	INLET
5516	1707882.01	1612742.23	INLET
5517	1706902.73	1612467.13	ES
5518	1706793.06	1612475.66	TIE IN
5519	1706872.69	1613066.99	MH

CONTROL POINTS

CP #10
 5/8" Rebar with 2" aluminum MKEC CLS 39 cap
 N = 1706912.98 E = 1615216.59
 2nd round-a-bout east of Maize Rd 23 feet west of flag pole
 12 feet NE of sign
 Elev.=1358.16 NAVD 88

CP #11
 5/8" Rebar with 2" aluminum MKEC CLS 39 cap
 N = 1707025.76 E = 1613856.03
 1st round-a-bout east of Maize Rd 14 feet west of flag pole
 28 feet NNE of sign
 Elev.=1357.16 NAVD 88

CP #12
 5/8" Rebar with 2" aluminum MKEC CLS 39 cap
 N = 1707973.54 E = 1613911.40
 948 feet north of 1st round-a-bout east of Maize Rd
 8 feet south of south edge of asphalt where drive makes a
 horseshoe turn 23 feet east of light pole
 Elev.=1354.89 NAVD 88

CP #13
 5/8" Rebar with 2" aluminum MKEC CLS 39 cap
 N = 1709270.20 E = 1613848.29
 164 feet east of fence corner at very northeast corner of
 Menards property 4 feet east of east edge of concrete drive
 on south side of 37th St North 4 feet south of south edge of
 sidewalk
 Elev.=1354.38 NAVD 88

Horizontal and Vertical Datum:
 Horizontal Datum: Kansas Coordinate System 1983 South Zone. Horizontal coordinates modified to ground using a scale factor of 1.000120014
 Vertical Datum: NAVD 88

EVERY ATTEMPT HAS BEEN MADE TO INSURE ALL COORDINATE VALUES SHOWN ARE AN ACCURATE AND TRUE REPRESENTATION OF THE CURRENT PLANS. ALL VALUES ARE TO BE CONFIRMED WITH THE FINAL SIGNED PLAN SET BEFORE USE.



FOX RIDGE PLAZA ADDITION

STORM WATER SEWER #681

©2015 MKEC Engineering All Rights Reserved
 www.mkec.com
 These drawings and their contents, including, but not limited to, all concepts, designs, & ideas are the exclusive property of MKEC Engineering (MKEC), and may not be used or reproduced in any way without the express consent of MKEC.

BUBBLE MAP

PROJECT NO.	468-84952	
DATE	JUNE 2015	
SCALE	1" = 100'	
DESIGNED	DRAWN	CHECKED
DFL	JWC	SLF
NO.	REVISION	DATE

SHEET NO.
12 OF 19

J:\PROJECTS\2011\1101010577 PREMIER FOX RIDGE PLAZA\5-CIVIL\LOADS\1572_DBC1.DWG