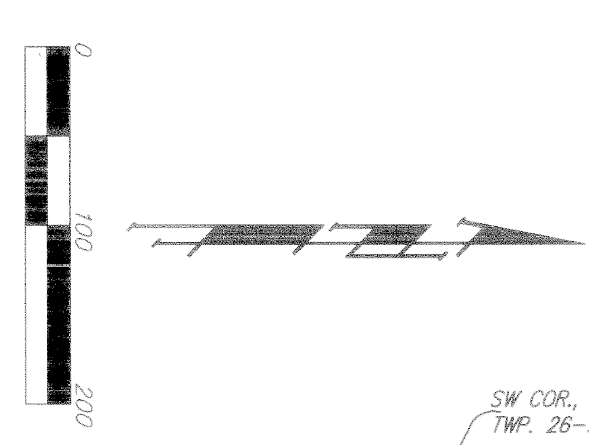
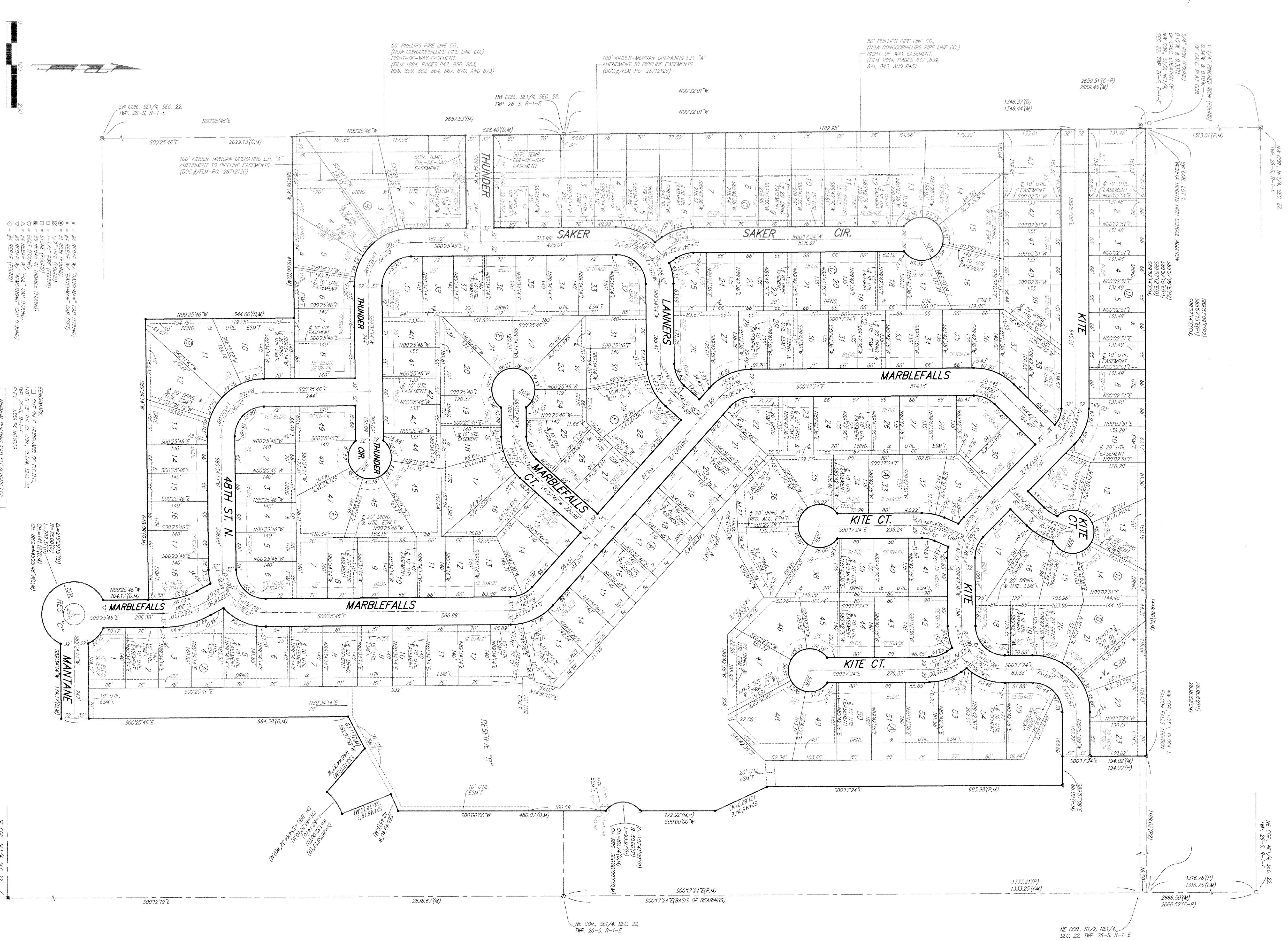


FALCON FALLS 2ND ADDITION WICHITA, SEDGWICK COUNTY, KANSAS



NOTE:
ALL LOTS WITHIN FALCON FALLS 2ND ADDITION
SHALL HAVE A 5 FOOT INTERIOR SIDEWALK SETBACK

NOTE:
A master grading plan for drainage has been developed for this subdivision
and is on file with the City of Wichita, Kansas. All drainage easements,
right-of-ways, or reserved street rights of established grade or other
crossings, no structures which impede the flow of this drainage system
shall be allowed.

- (M) = MEASURED
- (P) = PLATTED
- (O) = OBSERVED
- (C) = CALCULATED
- (M) = MEASURED
- (P) = PLATTED
- (O) = OBSERVED
- (C) = CALCULATED

LOT	BLCK	ELEVATION
1-9	A	1353.0
10-12	A	1354.0
13-18, 36, 37	A	1353.0
46-50	A	1353.0
51-55	A	1353.0
21, 22	D	1359.5

BENCHMARK:
TYPICAL ON E. HARBOR RD. OF R.C.B.C.,
110' S. OF THE SE COR. SE 1/4 SEC. 22
ELEV. = 1359.54 (MOR29)

B **Baughman Company, P.A.**
115 1/2 Block, Wichita, KS 67211 P:316.251.7711 F:316.251.0149
BAUGHMAN HOMESOURCE | KANSAS CITY | KANSAS CITY | KANSAS CITY | KANSAS CITY