

## GENERAL NOTES:

- Contractor will be required to provide notice to utility companies a minimum of seventy-two (72) hours prior to any excavation, as follows:

Kansas One-Call 687-2470

The Contractor must notify the following in case of an emergency:

Cox Communications	262-4270
Kansas Gas Service	1-888-482-4950
Westar Energy	383-8650
Black Hills Energy	1-800-303-0357
AT&T	268-2245
City of Wichita Water Dept.	268-4563
City of Wichita Sewer Maint.	268-4024
City of Wichita Storm Sewer Maint.	268-4094
City of Wichita Traffic Maint.	268-4034
Conoco Phillips Pipeline Co.	1-877-267-2290
Southern Star Pipeline Co.	629-6000
Kinder-Morgan Pipeline Co.	1-888-844-5658

- Utility service lines, poles, valve boxes, meters, and etcetera are to be adjusted as necessary by others prior to construction unless the plans specifically call for their adjustment by the Contractor or unless the plans specifically identify a utility to be adjusted by its owner during construction. Existing utilities and their location, as shown on the plans, represent the best information obtainable for design. The Contractor will be required to work around existing utilities within the right-of-way which do not conflict with proposed construction.
- Rubble from the removal of miscellaneous structures and excess excavation which is to be wasted shall be disposed of on sites to be provided by the Contractor. These sites shall be approved by the Engineer as to suitability, appearance and site location. Locations, in the opinion of the Engineer, that will leave an unsightly appearance will not be approved. All disposal sites must be approved by the Kansas Department of Health and Environment. Material either stockpiled or disposed of in a flood plain would require a Kansas State Board of Agriculture permit. Any material dumped in waters of the United States or wetlands is subject to U.S. Corps of Engineers permitting regulations. Any material buried or stockpiled beyond approved construction limits would require additional archaeological investigations unless buried in a previously approved borrow location.
- Trees and shrubs in public right-of-way which are in direct conflict with proposed new construction shall be removed by the Contractor with the Engineer's approval. Trees and shrubs which are not in direct conflict with proposed new construction shall be saved and protected from damage.
- The Contractor shall give all property owners and/or tenants of developed property abutting the construction of this project a minimum of ten (10) days notice prior to start of construction.
- The Contractor shall be responsible for preserving property irons. The Contractor will be required to re-establish any property irons which are damaged or destroyed by his construction operations. Such irons shall be re-established by a licensed land surveyor in accordance with state laws.
- All existing and proposed erosion control measures including silt fencing, erosion control mat, straw bales, inlet barriers, and const. entrance shall be maintained throughout construction by the contractor and until project is accepted by the City of Wichita. The on-site engineer shall complete weekly reports on the status of erosion control measures. The contractor shall be required to comply with maintenance and/or replacement of erosion control measures as determined by the on-site engineer until project is accepted by City of Wichita. Maintenance and/or replacement of erosion control measures to be paid by L.S. bid item "Site Restoration".
- All areas disturbed during construction shall be seeded at 300 lbs./acre with Rye Grass immediately following construction in that area. Contractor shall prepare ground per City Specifications.
- This development complies with Section 16.32 of the The City Code and the Wichita/Sedgwick County Storm Water Manual.

# STORM WATER SEWER IMPROVEMENTS to serve HARRISON PARK 3RD ADDITION

CITY OF WICHITA, KANSAS

Gary Janzen, P.E. City Engineer

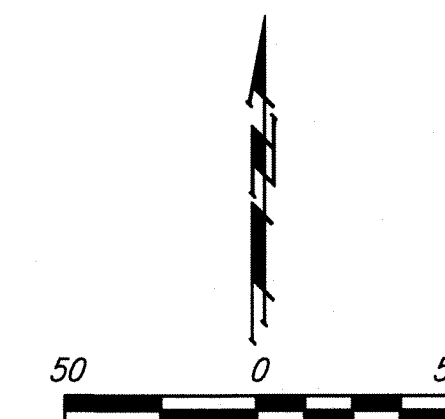
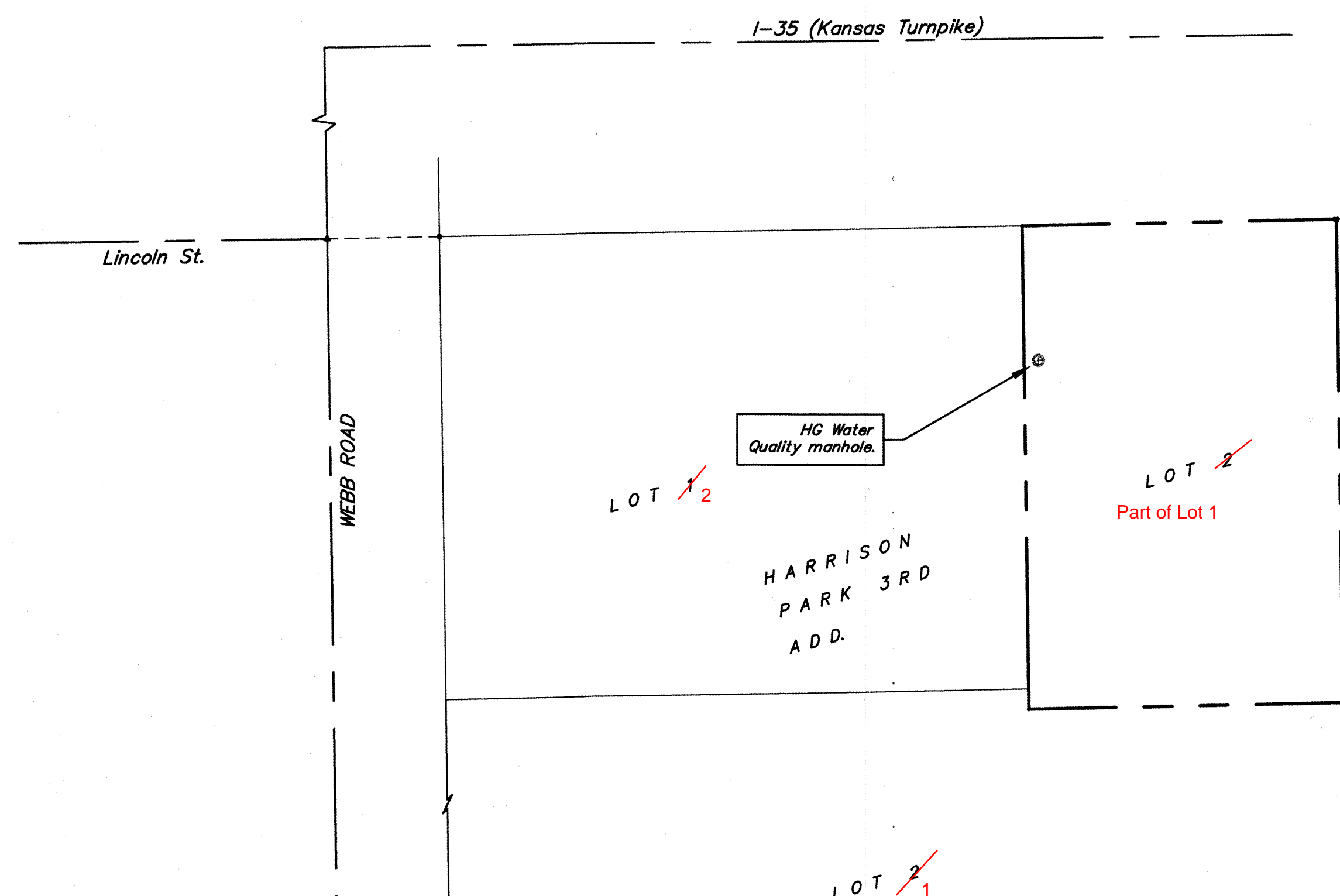
Project Number  
0218 PPD

## Benchmark

Chiseled on top of curb on the East side of Webb South of Lincoln.  
Elev. = 1365.03 NAVD88

## Sheet Index

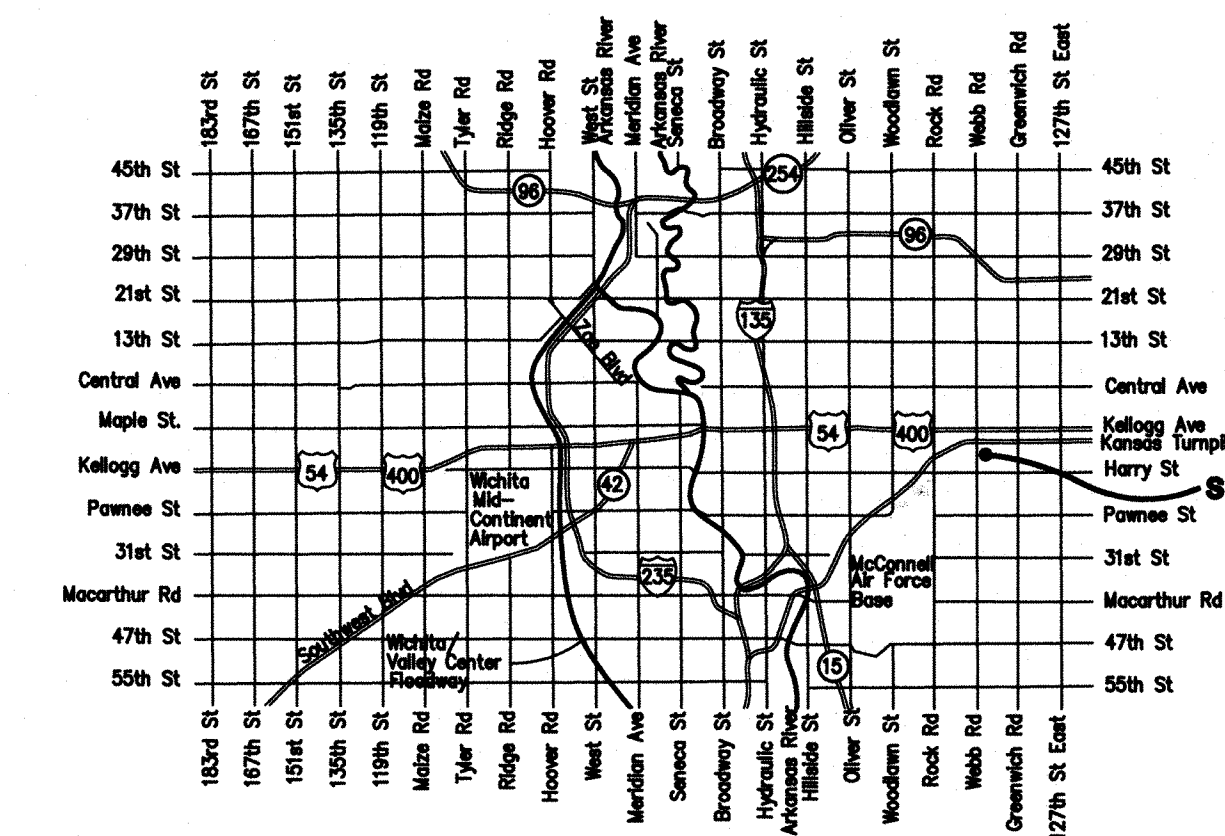
Title Sheet	1
SWS Line 1	2



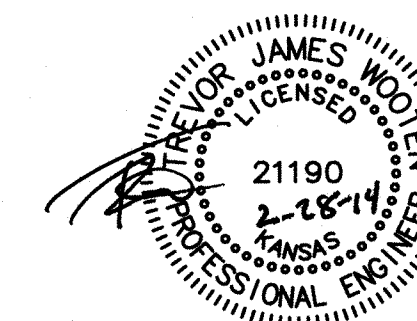
Total Disturbed Area: ±35,150 SF (.80 AC)  
Property Area: 30,280 SF (.68 AC)  
Impervious Area: ±14,730 SF (.34 acres)  
Building Area: 2,000 sq. ft. + 930 SF of Ambulance Bay

APPROVED AS NOTED  
BY CITY ENGINEER OF WICHITA  
Storm Sewers *Jim Hendricks 2-7-14*  
Engineering *Rebecca Drif*  
NOTE TO CONTRACTORS

Installation, inspection and testing for this project is to be provided by a Licensed Consulting Engineering Firm under contract with the Owner/Developer. Said Inspection to be in accordance with the City of Wichita standard construction engineering practices and certified by a Licensed Professional Engineer. No work shall be performed in dedicated easements or public right-of-way by the Contractor without such inspection nor shall any work be commenced without written authorization by the City Engineer. All Construction and Materials shall comply with the City of Wichita Specifications and Standards (on file and available in the City Engineer's Office).

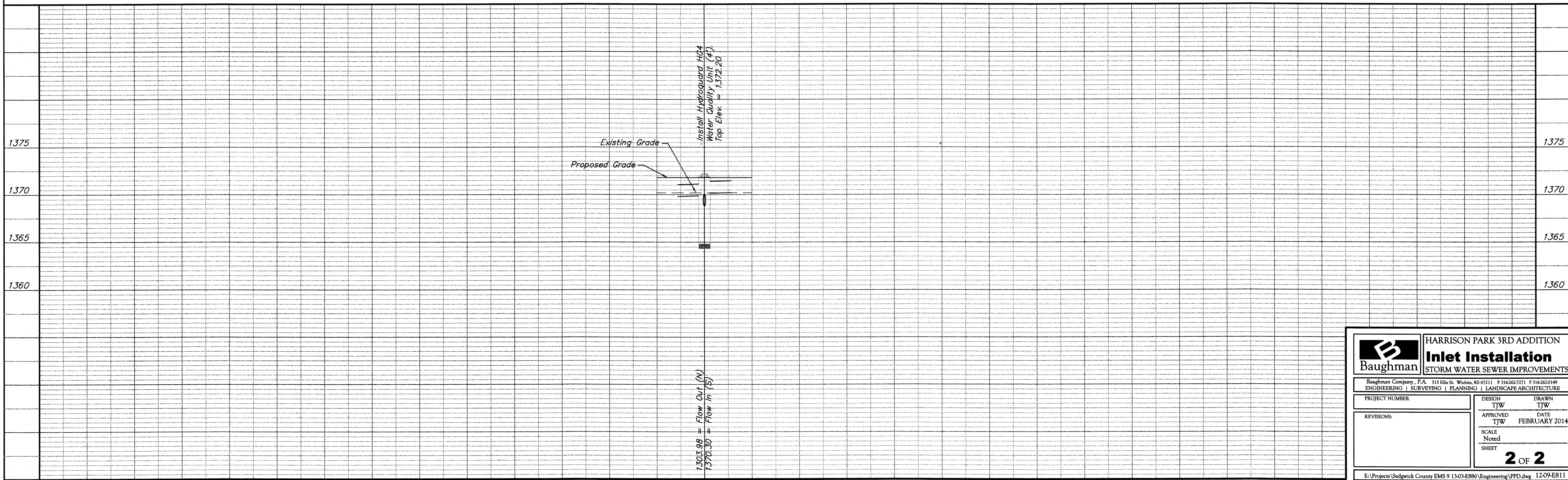
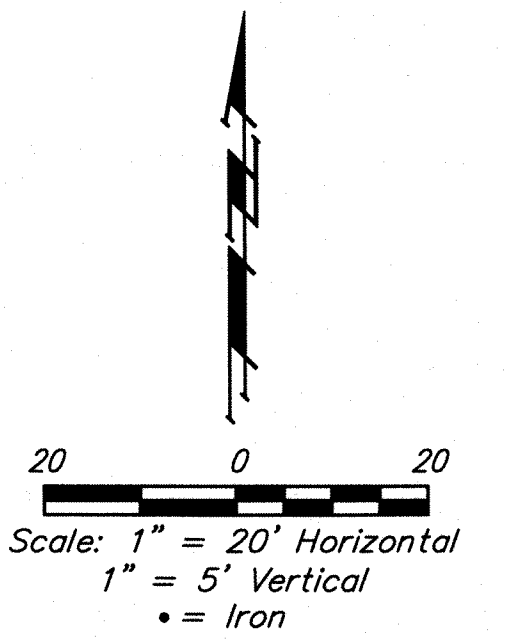
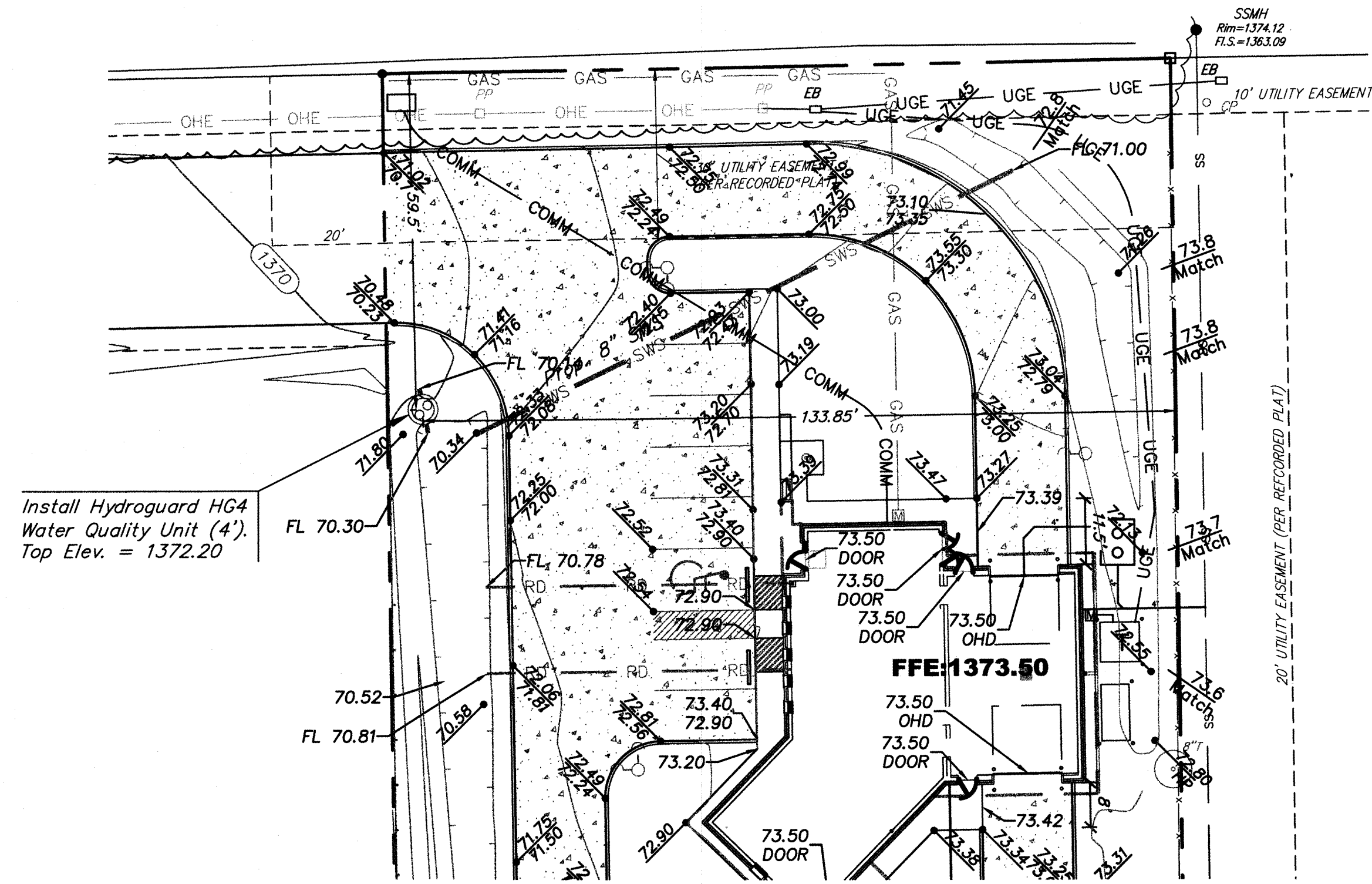


## Vicinity Map



Baughman Company, P.A. 315 Ella St. Wichita, KS 67211 P 316-262-7271 F 316-262-0149  
ENGINEERING | SURVEYING | PLANNING | LANDSCAPE ARCHITECTURE

**BENCHMARK:**  
 □ Chiseled on top of curb on  
 the East side of Webb South of  
 Lincoln.  
 Elev. = 1365.03 NAVD88



	<b>HARRISON PARK 3RD ADDITION</b> <b>Inlet Installation</b> <b>STORM WATER SEWER IMPROVEMENTS</b>	
	<small>Baughman Company, P.A., 315 Ellis St. Wichita, KS 67211 F 316-262-2721 F 316-262-0149          ENGINEERING   SURVEYING   PLANNING   LANDSCAPE ARCHITECTURE</small>	
PROJECT NUMBER  REVISIONS:	DESIGN TJW APPROVED TJW SCALE Noted SHEET	DRAWN TJW DATE FEBRUARY 2014  <b>2 OF 2</b>
<small>E:\Projects\Sedgwick County EMS 9 1303-E886\Engineering\PPD.dwg 12-09-ES11</small>		