

# AS BUILT PLANS

Contractor: Mies Construction Co.  
 Inspector: Fred Smith, Baughman Co.  
 pdf's by: KEK, 6/10/15

American Darling Hydrants  
 American Flow Valves

## WATER LINE TO SERVE

### Wichita Childrens Home

Lot 3, Block 1, Parcel No. 104

City of Wichita Private Project Number:

1849 PPW (607853)

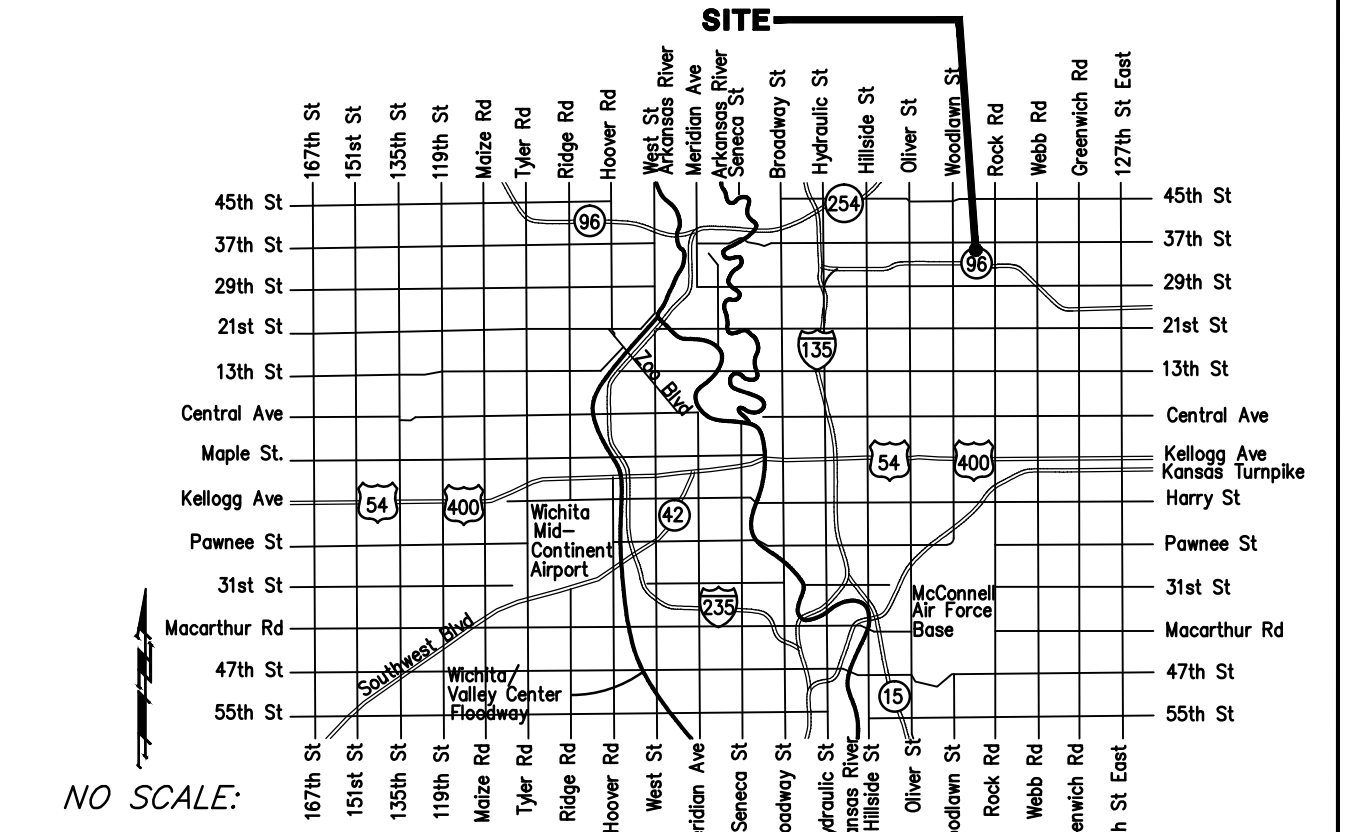
SEPTEMBER 2014

Gary Janzen, P.E. - City Engineer

Scale: 1" = 60'  
 • = Iron

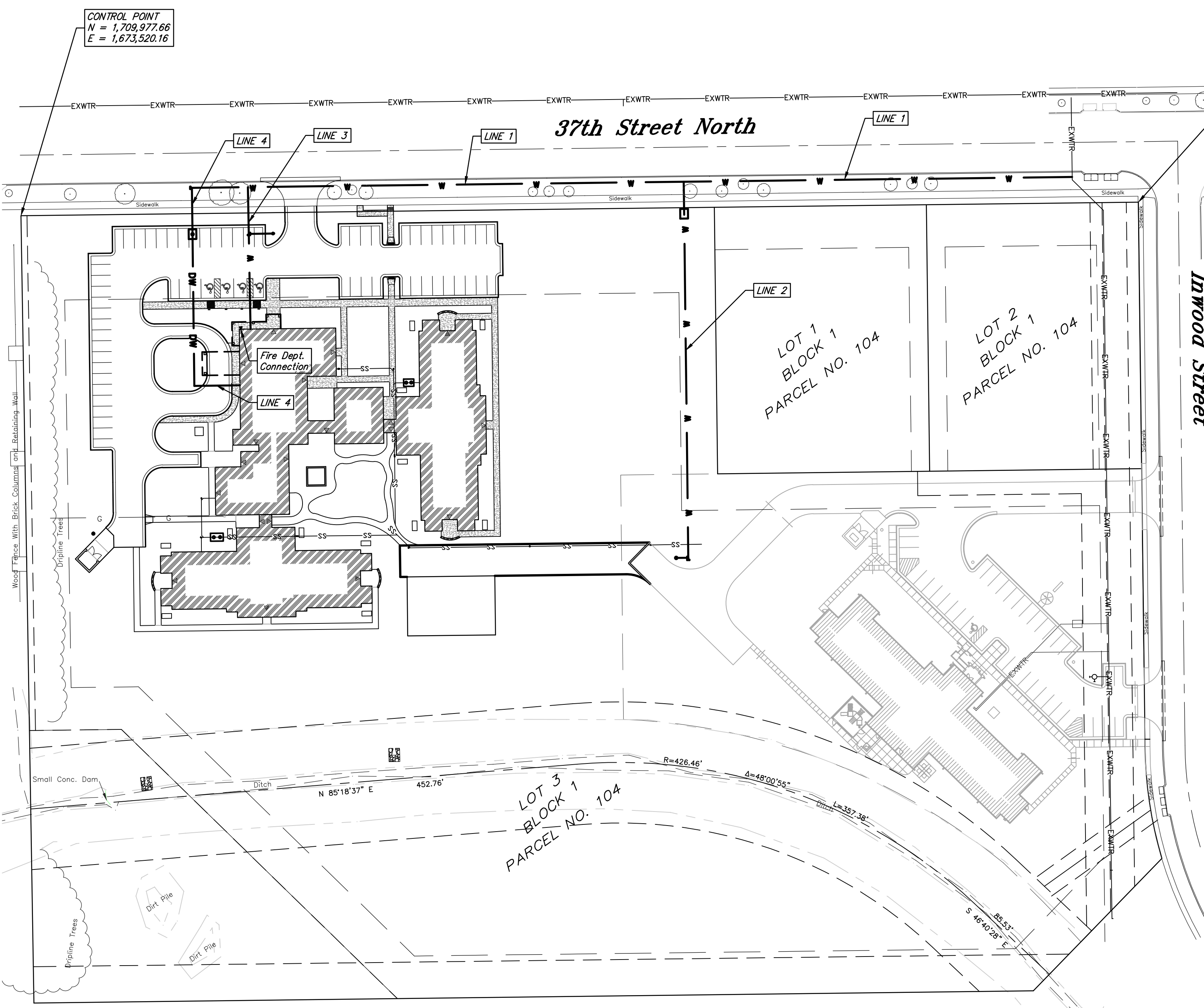
#### BENCHMARK

SITE BENCHMARK  
 City of Wichita disc 36th Street North and Inwood.  
 Northwest corner of hubguard on RCBC, south of 37th St.  
 Elevation = 1371.17 (NAVD88)



NO SCALE:

VICINITY MAP



#### Index

Title Sheet	1
Water Detail Sheet	2
Trench Detail Sheet	3
Vault Detail Sheet	4
Water Line 1	5-6
Water Line 2	7
Water Line 3 & 4	8
Plot Copy	9

Details available at City of Wichita web site at  
<http://www.wichita.gov/Government/Department/PWU/StandardsConstruction> or by request.

APPROVED AS NOTED  
 BY CITY ENGINEER OF WICHITA,  
 BY WICHITA WATER & SEWER DEPARTMENT,  
 & BY WICHITA FIRE DEPARTMENT

Public Works *Rebecca Guil 10/28/14*  
 Water & Sewer *Ang Tolly 10-28-14*  
 Fire *Shad 10-28-14*

**NOTE TO CONTRACTORS**

**Public Property:**  
 Inspection and testing for the waterline is to be provided by a Licensed Consulting Engineering Firm under contract with the Owner/Developer. Said inspection to be in accordance with the City of Wichita standard construction engineering practices and certified by a Professional Engineer Licensed in the state of Kansas. No work shall be performed in dedicated easements or public right-of-way by the Contractor without such inspection nor shall any work be commenced without written authorization by the City Engineer. All Construction and Materials shall comply with the City or Wichita Specifications and Standards (on file and available in the City Engineer's Office).

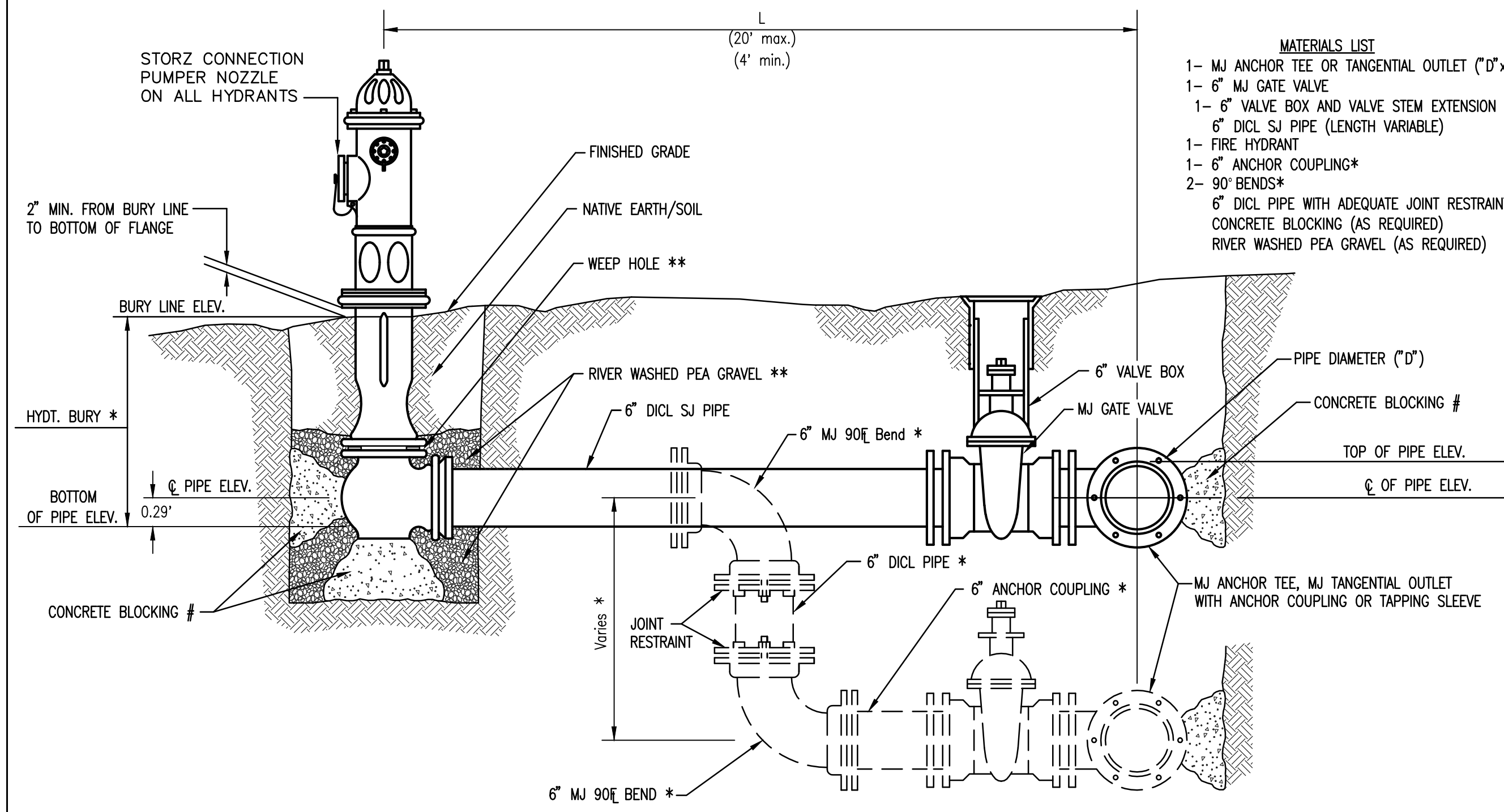
**Private Property:**  
 Installation and testing for the fire protection line is to be performed by a City of Wichita licensed fire protection contractor in accordance with the fire codes as adopted by the City of Wichita. All material and construction practices for the fire protection line shall comply with the fire codes as adopted by the City of Wichita (available from the City of Wichita Fire Department). The Contractor shall not commence work without notification and approval of the Wichita Fire Department. Inspection of the fire protection line is to be provided by a licensed Engineering Firm under contract with the Owner/Developer and the Fire Department. The contractor shall not start work until the project inspector is assigned to the project and present on the site. Any work done without inspection will be required to be uncovered for inspection.

#### GENERAL NOTES:

- Contractor will be required to provide notice to utility companies a minimum of forty-eight (48) hours prior to any excavation, as follows:  
 Kansas One-Call 687-2470  
 Cox Communications 262-4270  
 Kansas Gas Service 1-888-482-4950  
 Westar Energy 383-8650  
 Black Hills Energy (Gas) 1-800-303-0357  
 ATT 268-2245  
 City of Wichita Water Dept. 268-4563  
 City of Wichita Sewer Maint. 268-4024  
 City of Wichita Storm Sewer Maint. 268-4090  
 City of Wichita Traffic Maint. 268-4034
- Utility service lines, poles, valve boxes, meters, and etcetera are to be adjusted as necessary by others prior to construction unless the plans specifically call for their adjustment by the Contractor or unless the plans specifically identify a utility to be adjusted by its owner during construction. Existing utilities and their location, as shown on the plans, represent the best information obtainable for design. The Contractor will be required to work around existing utilities within the right-of-way which do not conflict with proposed construction.
- All disturbed R/W areas not intended for pavement or sidewalk construction shall be seeded with Kansas Premium Fescue Blend at a rate of 8 lb./1000 Sq. Ft., fertilized with a 16-20-6 ratio at a rate of 4 lb./1000 Sq. Ft., and mulched with Prairie Hay at a rate of 92 lb./1000 Sq. Ft. Mulch shall be "patted" with forks or punched into soil to reduce loss due to wind.
- Rubble from the removal of miscellaneous structures and excess excavation which is to be wasted shall be disposed of on sites to be provided by the Contractor. These sites shall be approved by the Engineer as to suitability, appearance and site location. Locations, in the opinion of the Engineer, that will leave an unsightly appearance will not be approved. All disposal sites must be approved by the Kansas Department of Health and Environment. Material either stockpiled or disposed of in a flood plain would require a Kansas State Board of Agriculture permit. Any material dumped in waters of the United States or wetlands is subject to U.S. Corps. of Engineers permitting regulations. Any material buried or stockpiled beyond approved construction limits would require additional archaeological investigations unless buried in a previously approved borrow location.
- Contractor to obtain pavement cut permit prior to pavement removal. Pavement replacement will be completed by City Contractor with cost of replacement to be reimbursed by Utility Contractor. Contractor to remove concrete sidewalk to the nearest construction joint if within 3' of joint. Saw cut if over 3' from joint. Removal and replacement of pavement shall not be paid for directly, but shall be considered incidental to other items in the project.
- Contractor shall furnish the inspector with a copy of the manufacturer's certification for any pipe used on this project after completion of pipe installation. The engineer will not certify the project to the city until pipe certification has been received.
- Trees and shrubs in public right-of-way which are in direct conflict with proposed new construction shall be removed by the Contractor with the Engineer's approval. Trees and shrubs which are not in direct conflict with proposed new construction shall be saved and protected from damage.
- All water lines and appurtenances shall be installed in accordance with the most recent edition of City of Wichita, Kansas Standard Specifications for the Construction of City Projects.
- Contractor shall not start work on the project until the project inspector is assigned to the project and is present on the site. Contractor shall not start on the project until all necessary bonds and permits have been obtained. Bonds may include but are not limited to Statutory, Performance & Maintenance. Any work done without inspection will be required to be uncovered for inspection.
- Contractor to use extreme caution when excavating near utility lines. Contractor to hand dig to expose all utility lines prior to construction. verify depth to determine conflict if any.
- Contractor shall follow all applicable best management practices (BMP) for erosion control. Details available at City of Wichita web site at <http://www.wichita.gov/Government/Departments/PWU/StandardsConstruction/> or by request.
- The Water Line 1 of this project is a Public Water Main. Water Line 2, 3, & 4 are private water lines. The owner is responsible for the maintenance and repair of the private lines.

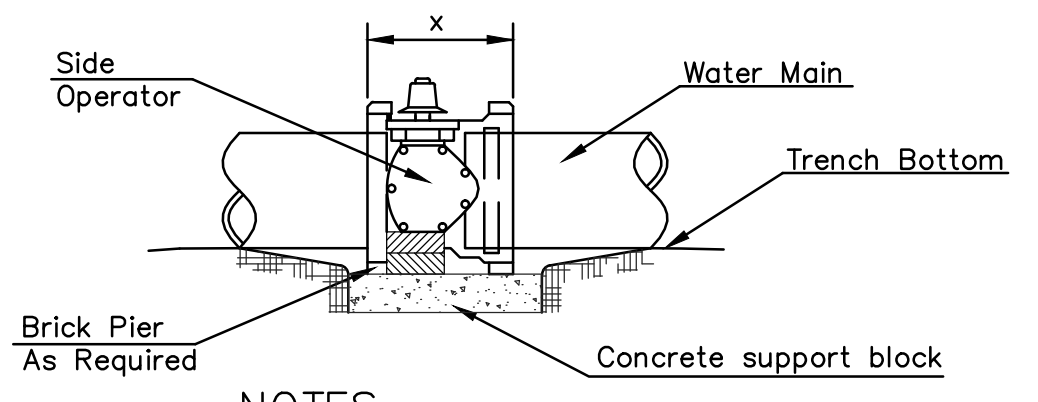


Baughman Company, P.A. 315 Ellis St. Wichita, KS 67211 P 316-263-2271 F 316-262-0149  
 ENGINEERING | SURVEYING | PLANNING | LANDSCAPE ARCHITECTURE

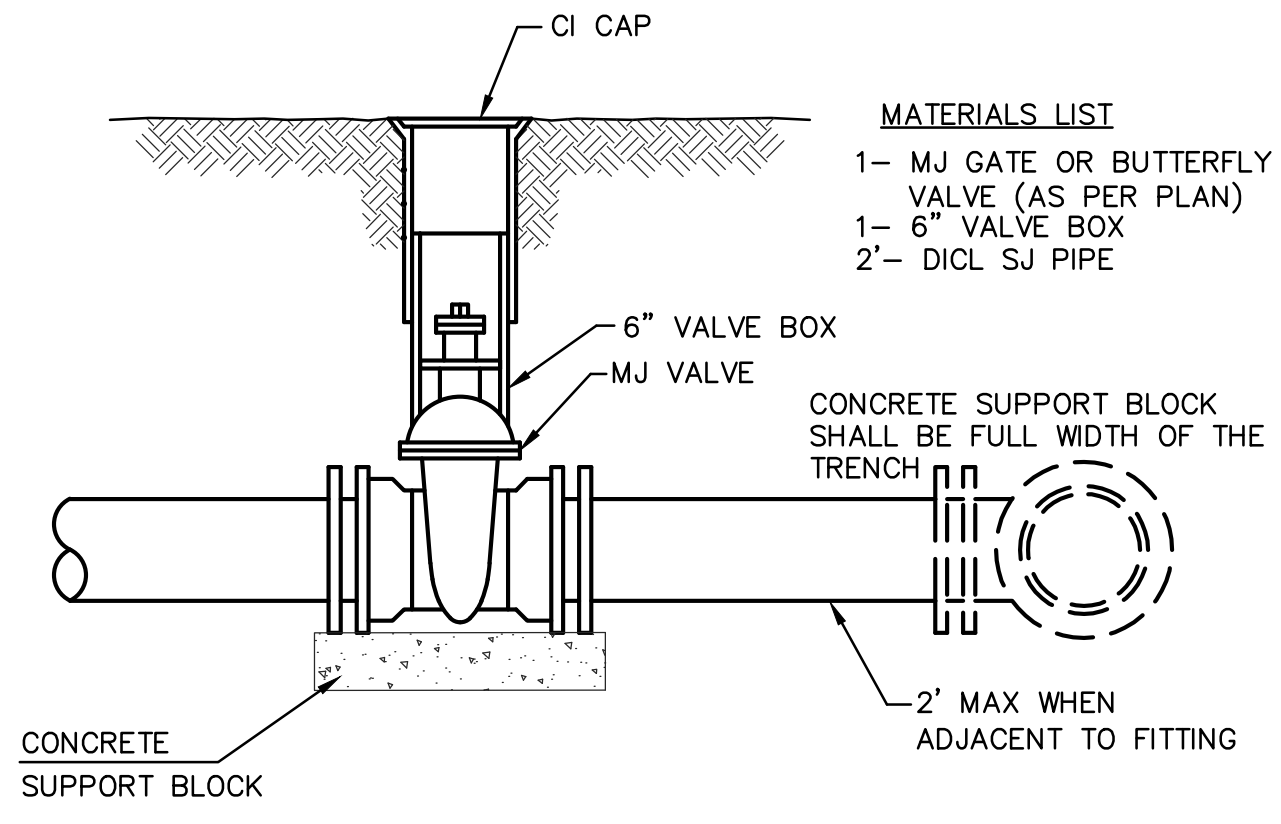


- MATERIALS LIST**
- 1- MJ ANCHOR TEE OR TANGENTIAL OUTLET ("D"x 6")
  - 1- 6" MJ GATE VALVE
  - 1- 6" VALVE BOX AND VALVE STEM EXTENSION IF REQUIRED \*
  - 6" DI CL SJ PIPE (LENGTH VARIABLE)
  - 1- FIRE HYDRANT
  - 1- 6" ANCHOR COUPLING\*
  - 2- 90° BENDS\*
  - 6" DI CL PIPE WITH ADEQUATE JOINT RESTRAINT \*
  - CONCRETE BLOCKING (AS REQUIRED)
  - RIVER WASHED PEA GRAVEL (AS REQUIRED)

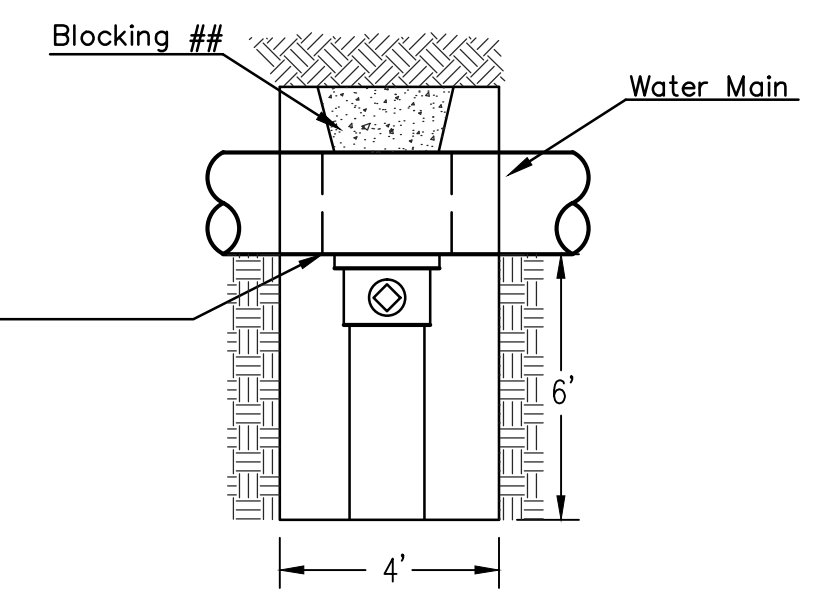
FIRE HYDRANTS REQUIRED				
STATION	BURY LINE ELEVATION	TOP OF PIPE ELEVATION	FIRE HYDRANT BURY REQUIRED*	VALVE STEM EXT. REQUIRED (ft)*
3+10.41, Line 2	1369.92	1366.10	4.5'	-
0+38.57, Line 3	1374.35	1369.53	5.5'	-



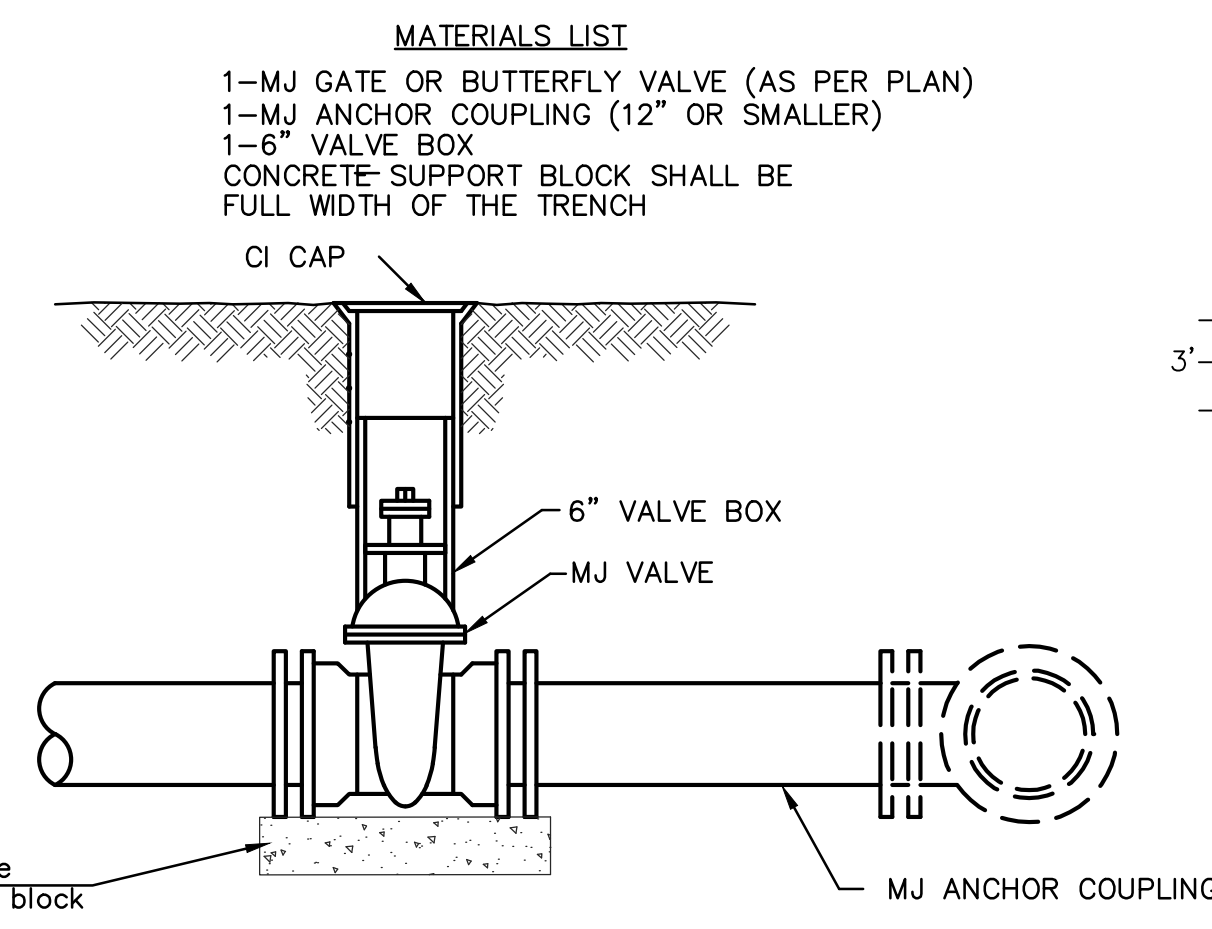
- NOTES**
1. This detail covers Butterfly Valve installation, inclusive, regardless of type of pipe or joint used. 24" and larger lines to be detailed on plans.
  2. 6" Valve Box and Cover required per City of Wichita Std. Specifications.
  3. Conc. Support Block to be full width of trench.



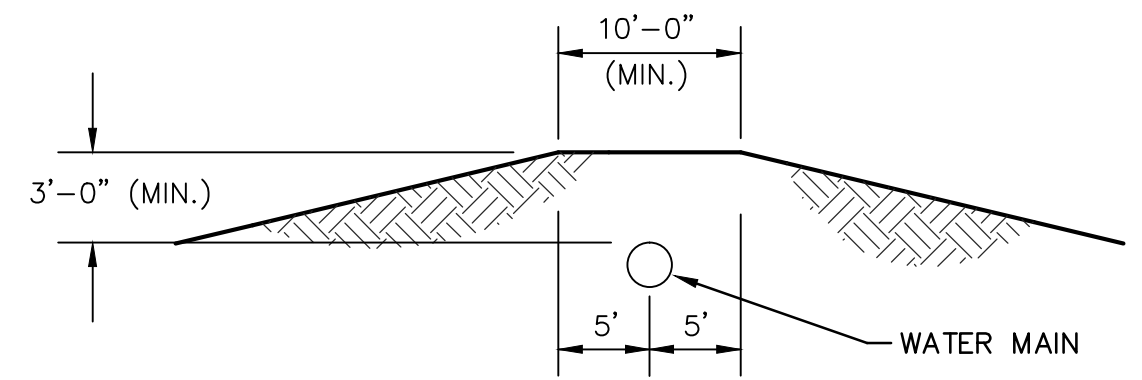
- MATERIALS LIST**
- 1- MJ GATE OR BUTTERFLY VALVE (AS PER PLAN)
  - 1- 6" VALVE BOX
  - 2- DI CL SJ PIPE



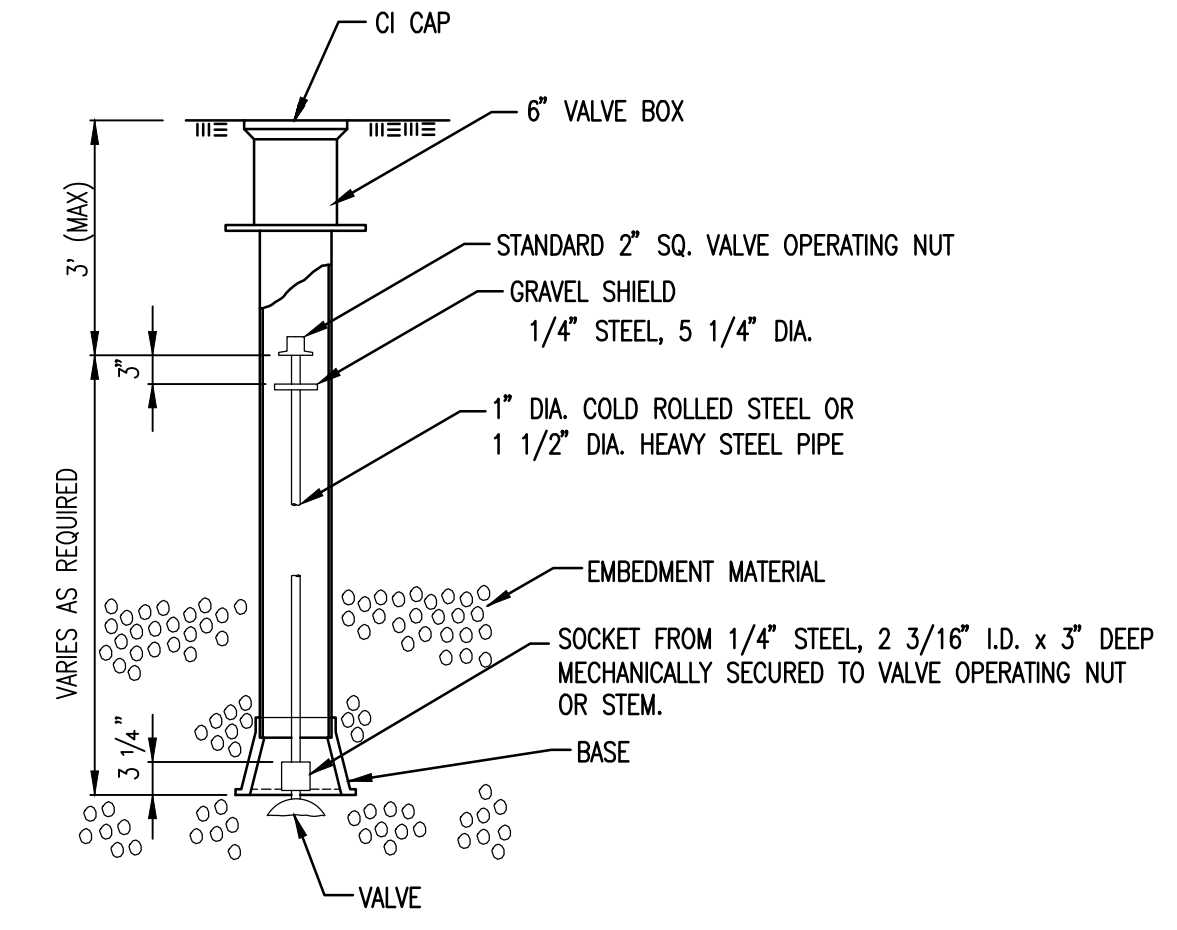
## When the City of Wichita makes tap, blocking is to be done by Contractor



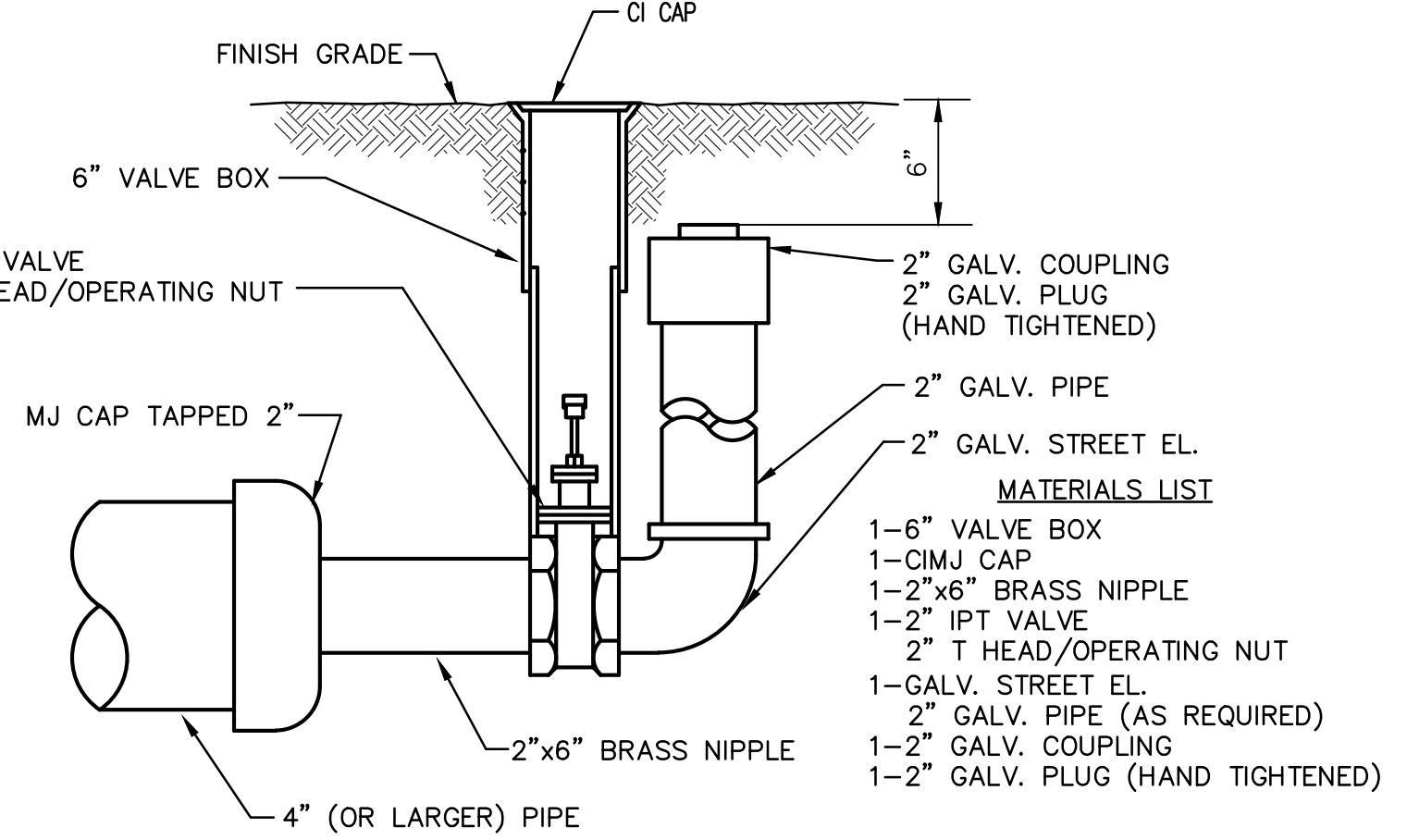
- MATERIALS LIST**
- 1- MJ GATE OR BUTTERFLY VALVE (AS PER PLAN)
  - 1- MJ ANCHOR COUPLING (12" OR SMALLER)
  - 1- 6" VALVE BOX
  - CONCRETE SUPPORT BLOCK SHALL BE FULL WIDTH OF THE TRENCH



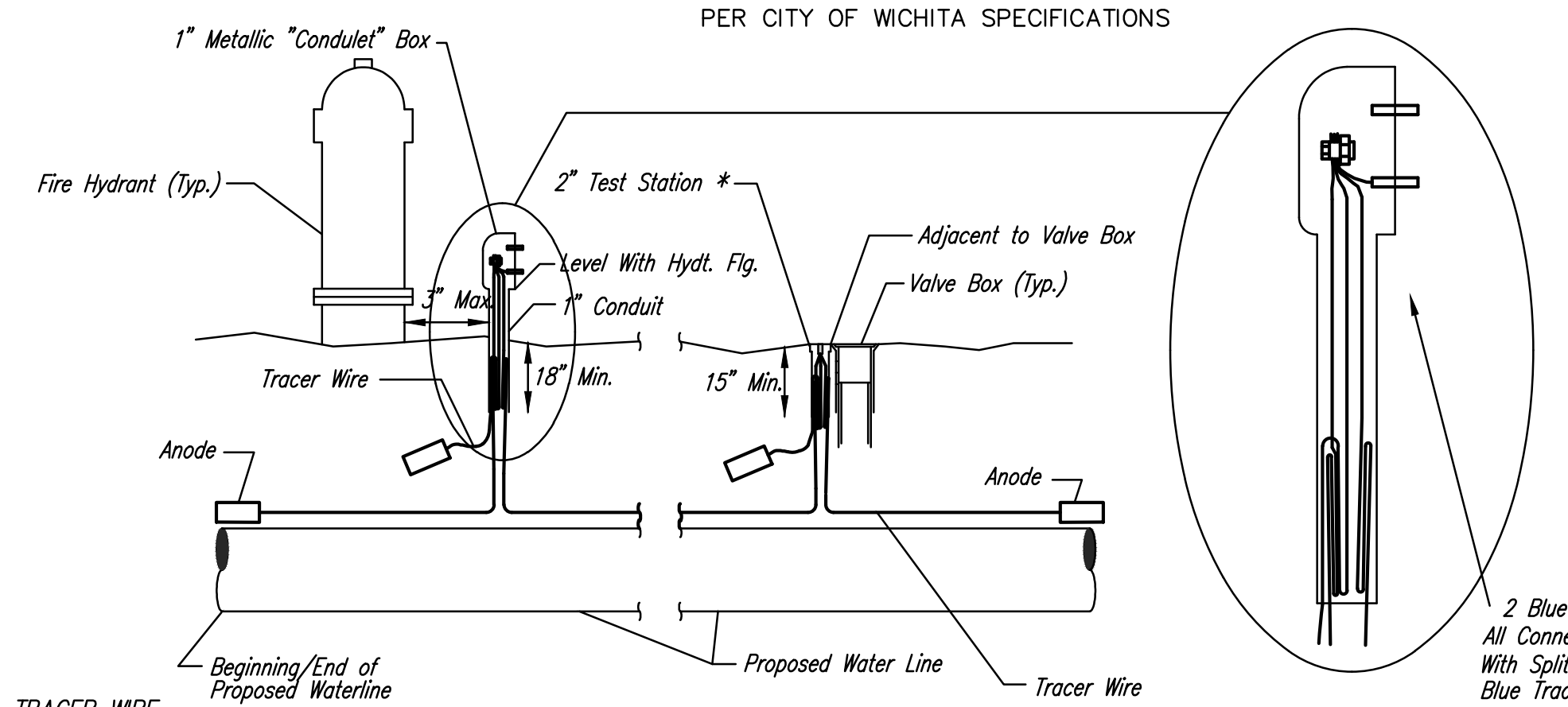
MINIMUM PROTECTIVE FILL SHALL BE PROVIDED IN ALL INSTANCES WHERE COVER OVER THE PROP. WATER LINE IS LESS THAN 3". (COST SUBSIDIARY TO PIPE INSTALLATION)



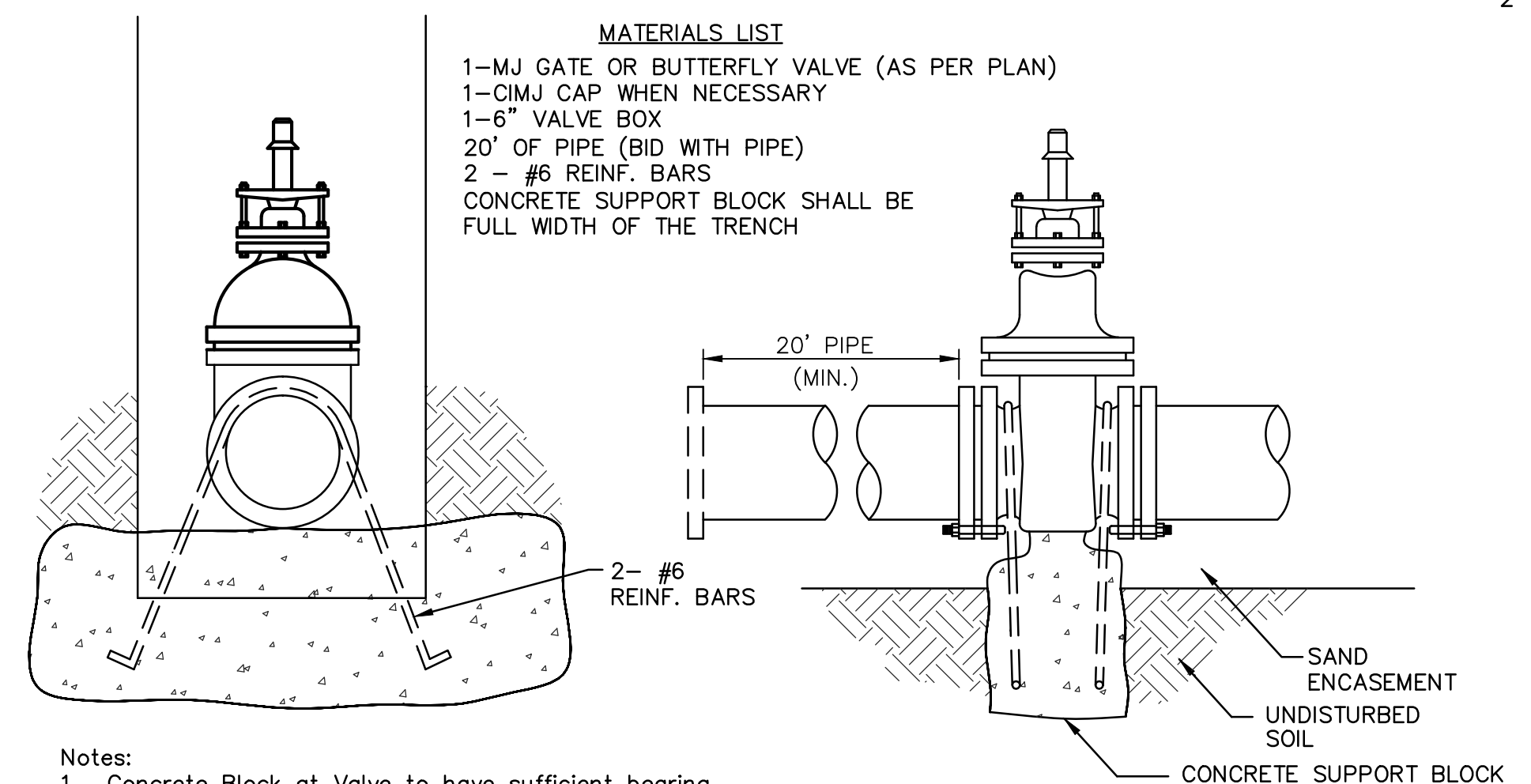
NOTE: ONE VALVE STEM EXTENSION FOR EACH VALVE BURIED GREATER THAN 5'.



- MATERIALS LIST**
- 1- 6" VALVE BOX
  - 1- CI MJ CAP
  - 1- 2"x6" BRASS NIPPLE
  - 1- 2" IPT VALVE
  - 2" T HEAD/OPERATING NUT
  - 1- GALV. STREET EL.
  - 2" GALV. PIPE (AS REQUIRED)
  - 1- 2" GALV. COUPLING
  - 1- 2" GALV. PLUG (HAND TIGHTENED)



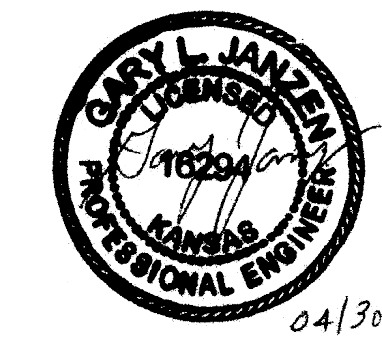
\* FLUSH STYLE TEST STATIONS SHALL ONLY BE USED IN PAVEMENT.



- MATERIALS LIST**
- 1- MJ GATE OR BUTTERFLY VALVE (AS PER PLAN)
  - 1- CI MJ CAP WHEN NECESSARY
  - 1- 6" VALVE BOX
  - 20' OF PIPE (BID WITH PIPE)
  - 2 - #6 REINF. BARS
  - CONCRETE SUPPORT BLOCK SHALL BE FULL WIDTH OF THE TRENCH

- Notes:**
1. Concrete Block at Valve to have sufficient bearing in undisturbed soil to prevent thrust movement as shown in table at right. Field Engineer to determine thrust loading of undisturbed soil and final size of thrust block.
  2. The thrust block shall be constructed such that bolts, nuts, and other MJ accessories are kept clear of concrete.
  3. All valves at dead ends and at other locations as called out on the plans shall be blocked as shown here.

VALVE	THRUST AT 150 #/in <sup>2</sup>
4"	1809 lbs.
6"	4245 lbs.
8"	7540 lbs.
12"	16965 lbs.



**CITY OF WICHITA**  
PUBLIC WORKS & UTILITIES  
ENGINEERING DIVISION

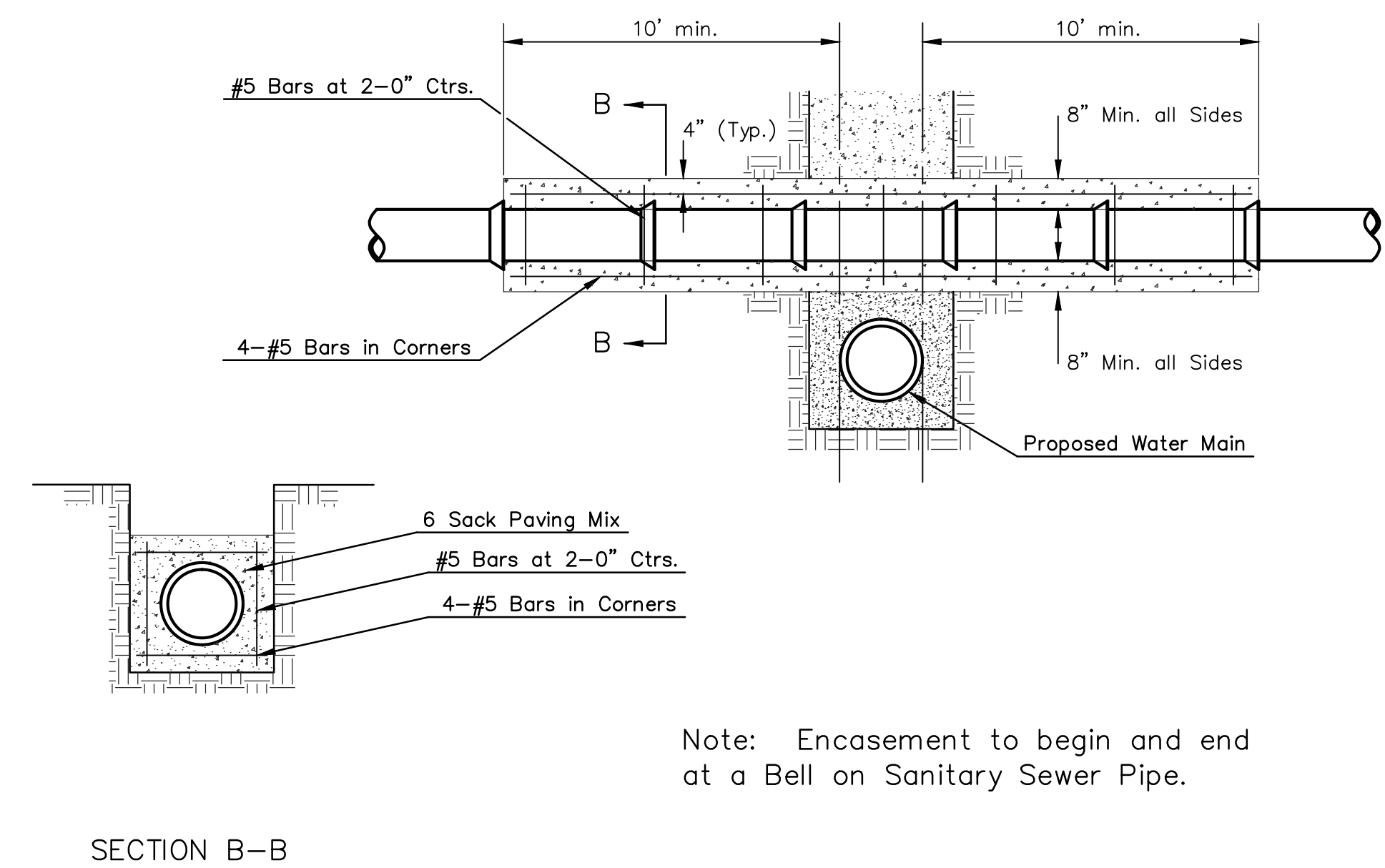
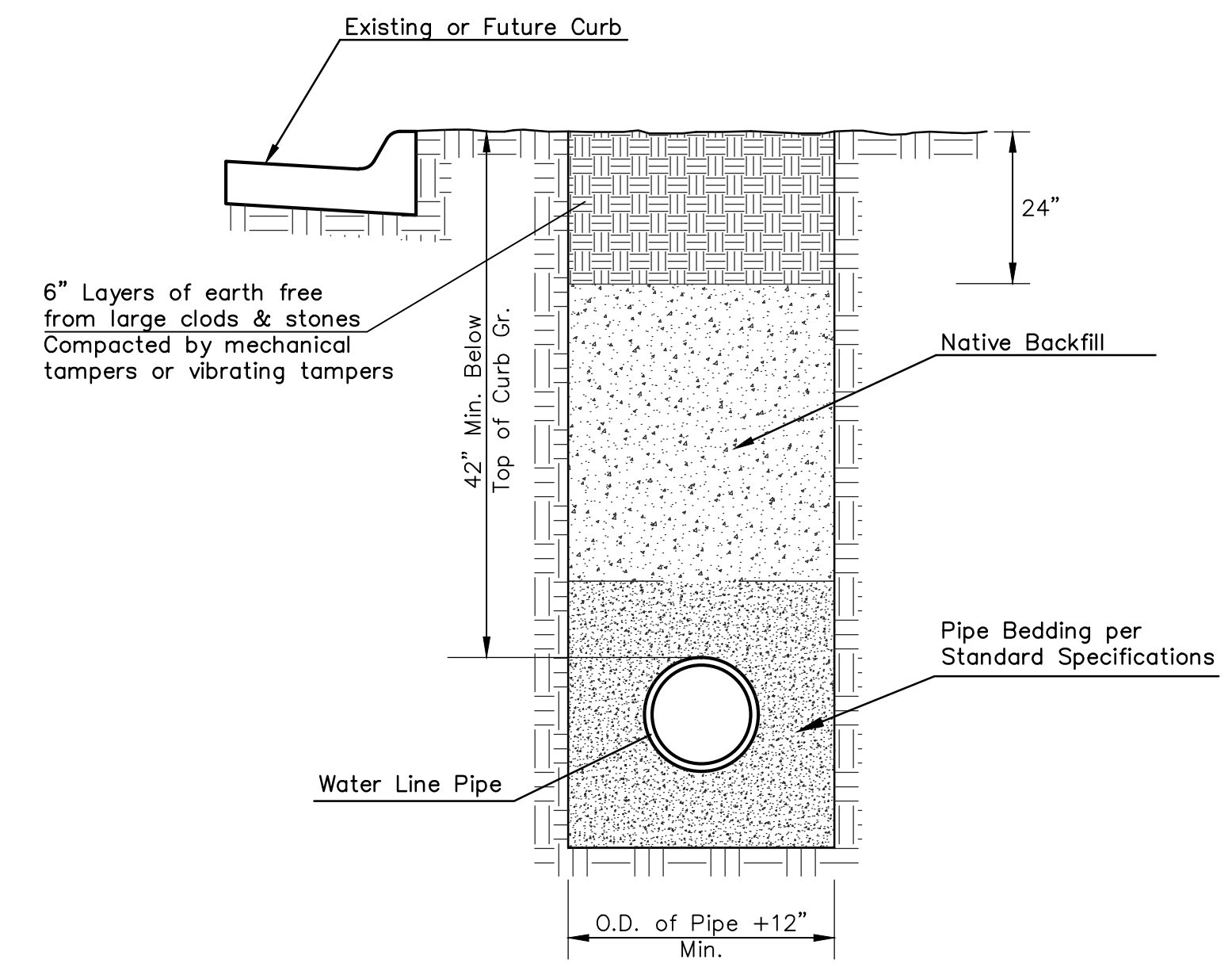
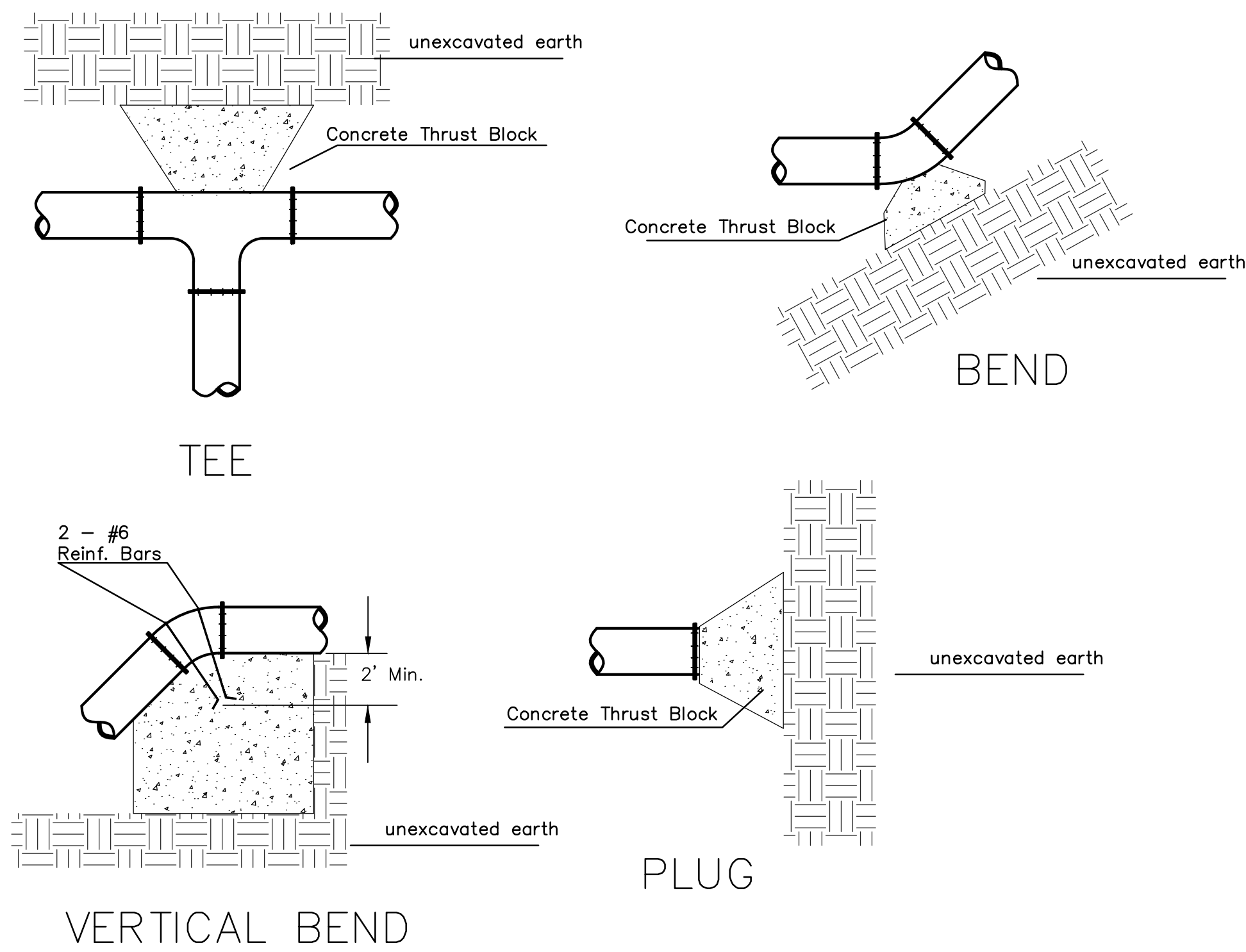
**STANDARD WATER ASSEMBLY DETAIL**

CITY ENGINEER  
**GARY JANZEN, P.E.**

PROJECT NUMBER 1849 PPW	OCA NUMBER (607853)	DATE 7/2013
----------------------------	------------------------	----------------

CITY ENGINEER'S OFFICE  
CITY HALL - SEVENTH FLOOR  
455 NORTH MAIN STREET  
WICHITA, KANSAS 67202-1620  
(316) 268-4501

SHEET  
**2 of 9**

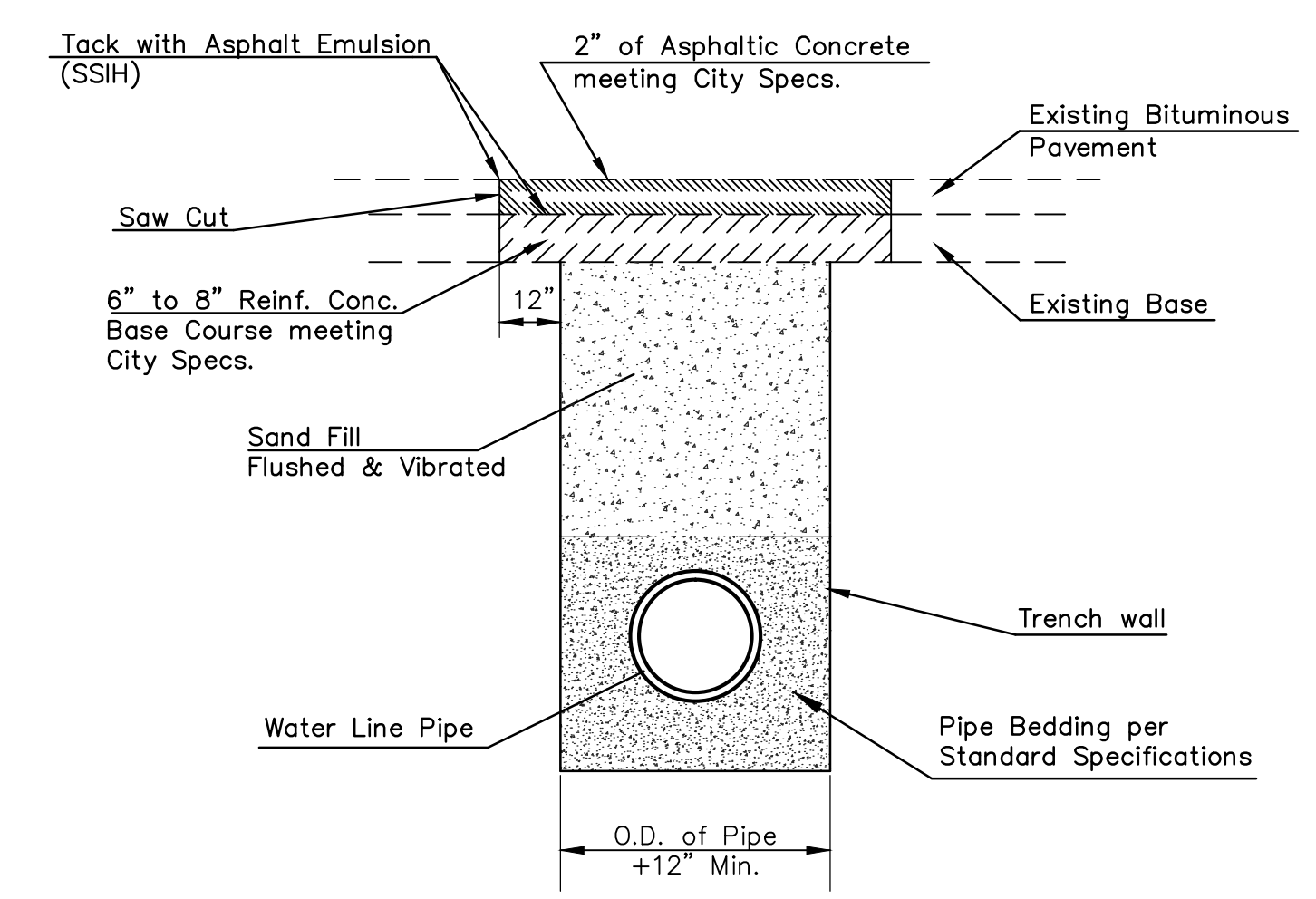
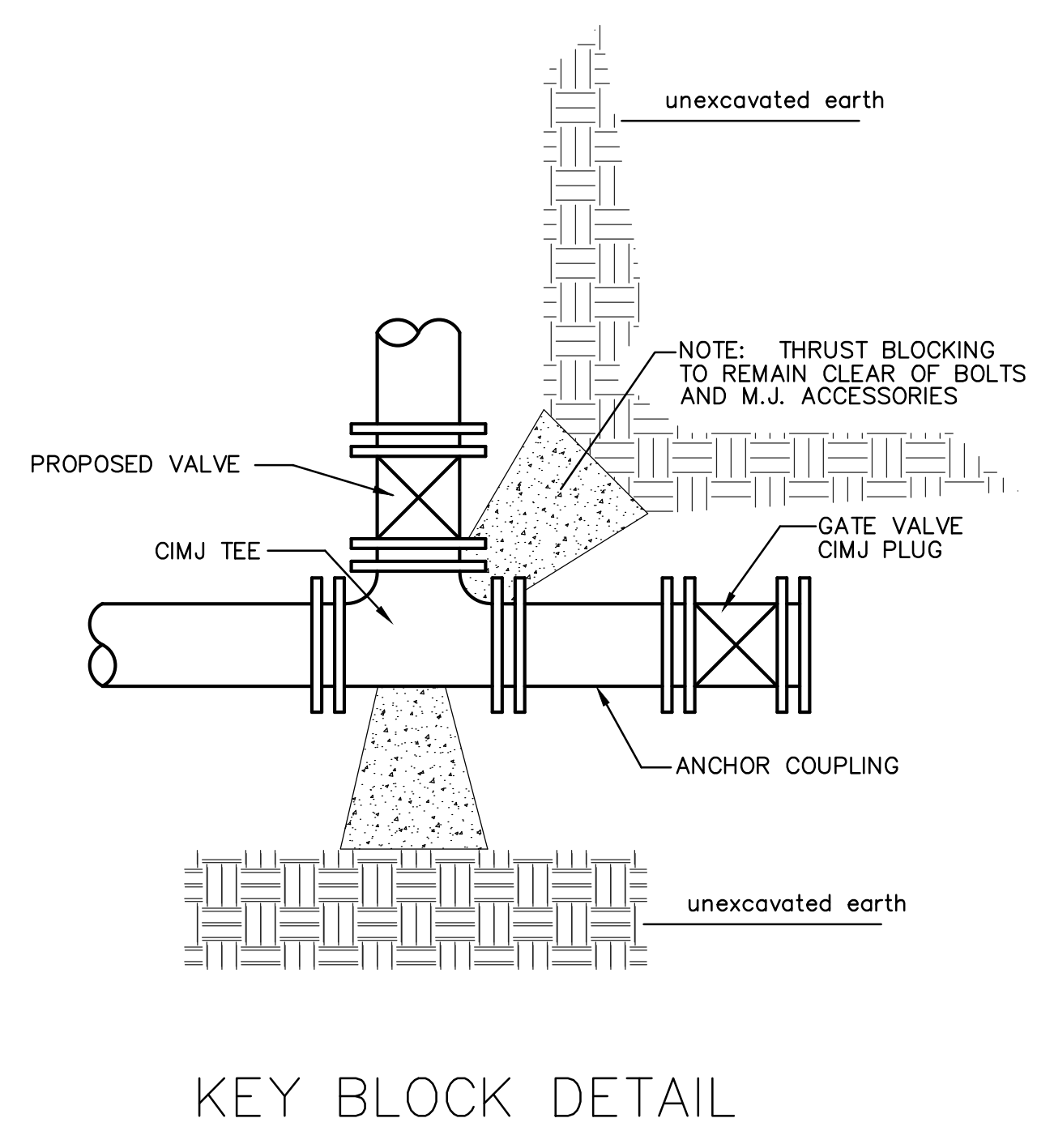


TRENCH COMPACTION IN ROAD RIGHT-OF-WAY

REINFORCED CONCRETE ENCASEMENT OF SANITARY SEWER

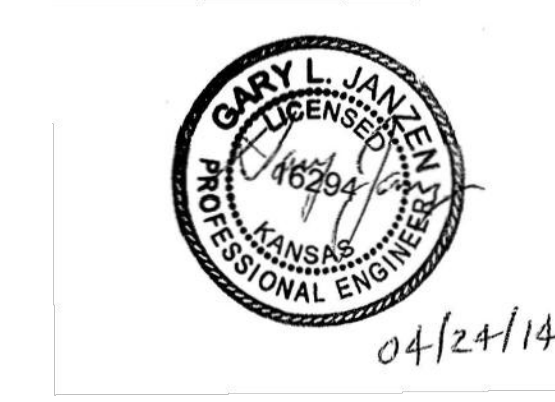
PIPE SIZE	THRUST AT FITTINGS IN TONS-AT 150#/IN P					
	PLUG	90°	45°	22 1/2°	11 1/4°	TEE
6"	2.8	3.95	2.15	1.09	.55	2.8
8"	4.9	6.95	3.75	1.90	.96	4.9
12"	11.4	16.1	8.75	4.45	2.25	11.4
16"	20.15	28.5	15.4	7.85	3.95	20.15
20"	31.15	44.0	23.85	12.15	6.10	31.15
24"	44.55	63.0	34.1	17.4	8.75	44.55

TYPICAL THRUST BLOCKS



PAVEMENT REPLACEMENT & TRENCH COMPACTION UNDER EXISTING AND PROPOSED CITY ROADS

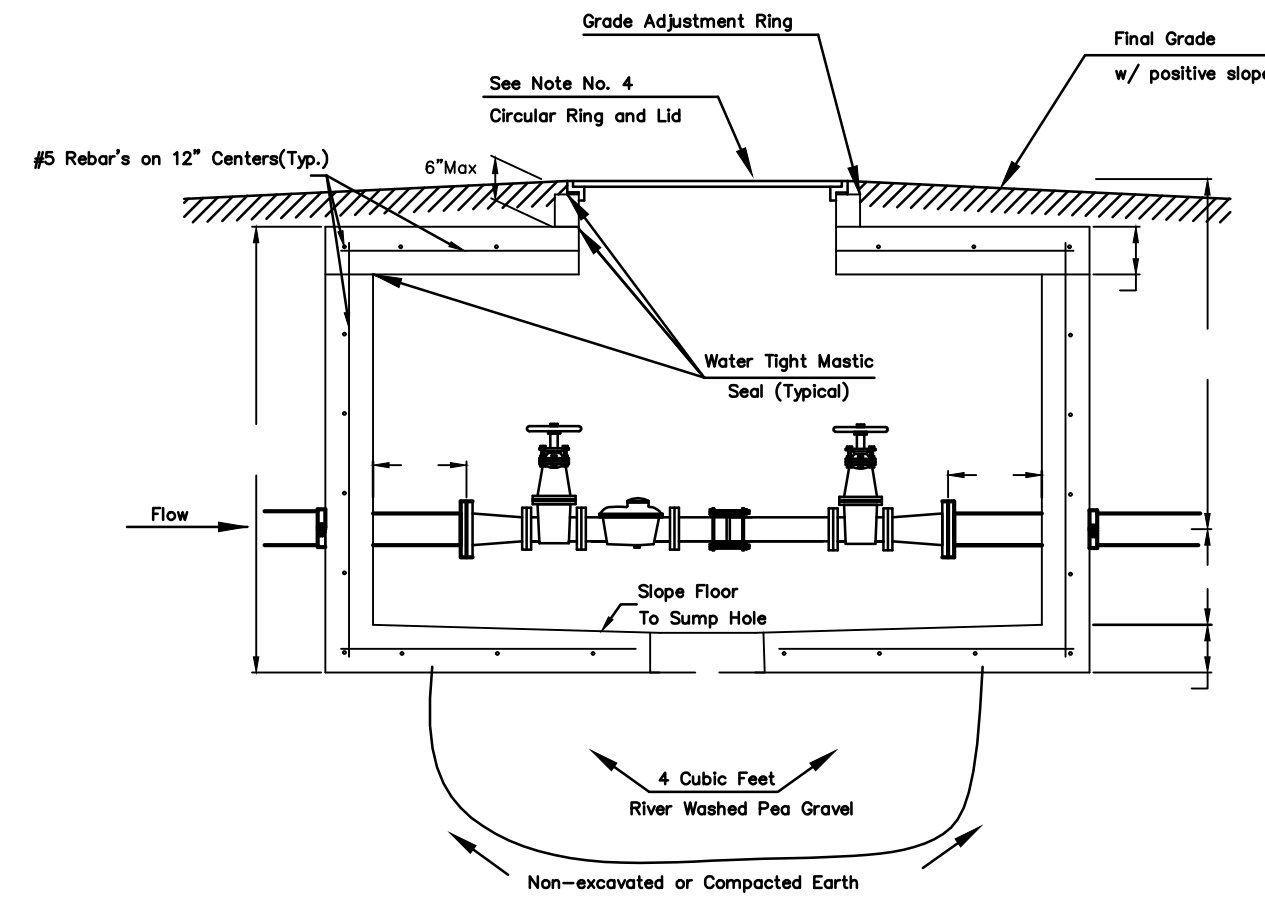
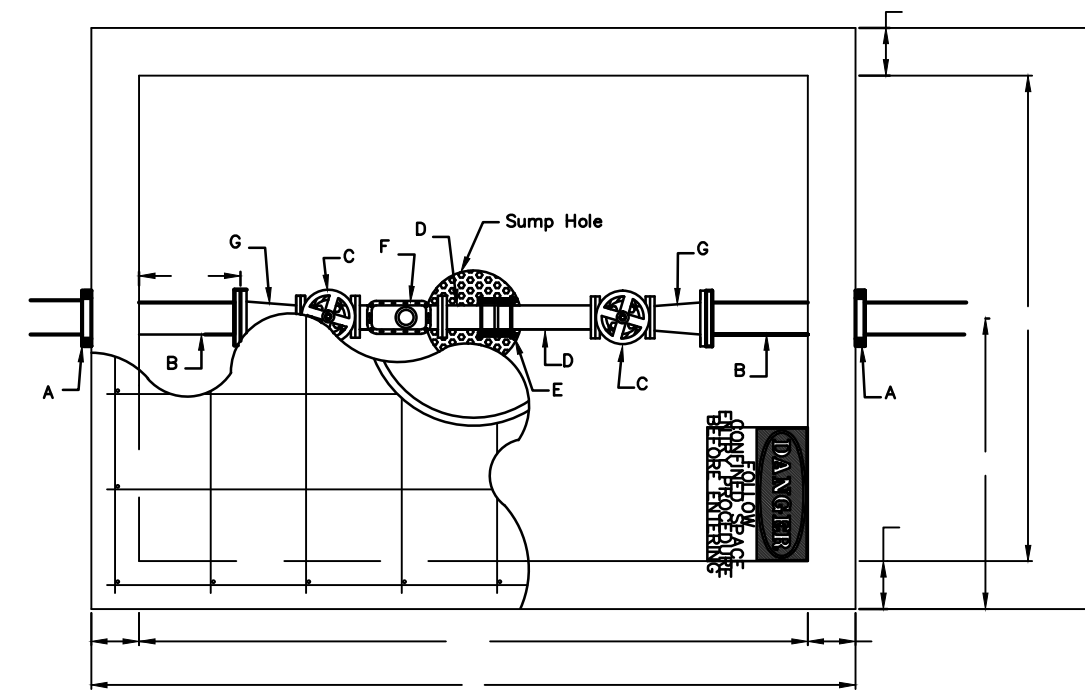
\* PLANS GOVERN UNLESS OTHERWISE NOTED ON PLANS



MISCELLANEOUS WATER DETAILS		
CITY ENGINEER		
GARY JANZEN, P.E.		
PROJECT NUMBER	OCA NUMBER	DATE
1849 PPW	(607853)	7/2013
CITY ENGINEER'S OFFICE		SHEET
CITY HALL - SEVENTH FLOOR 455 NORTH MAIN STREET WICHITA, KANSAS 67202-1620 (316) 268-4501		3 of 9

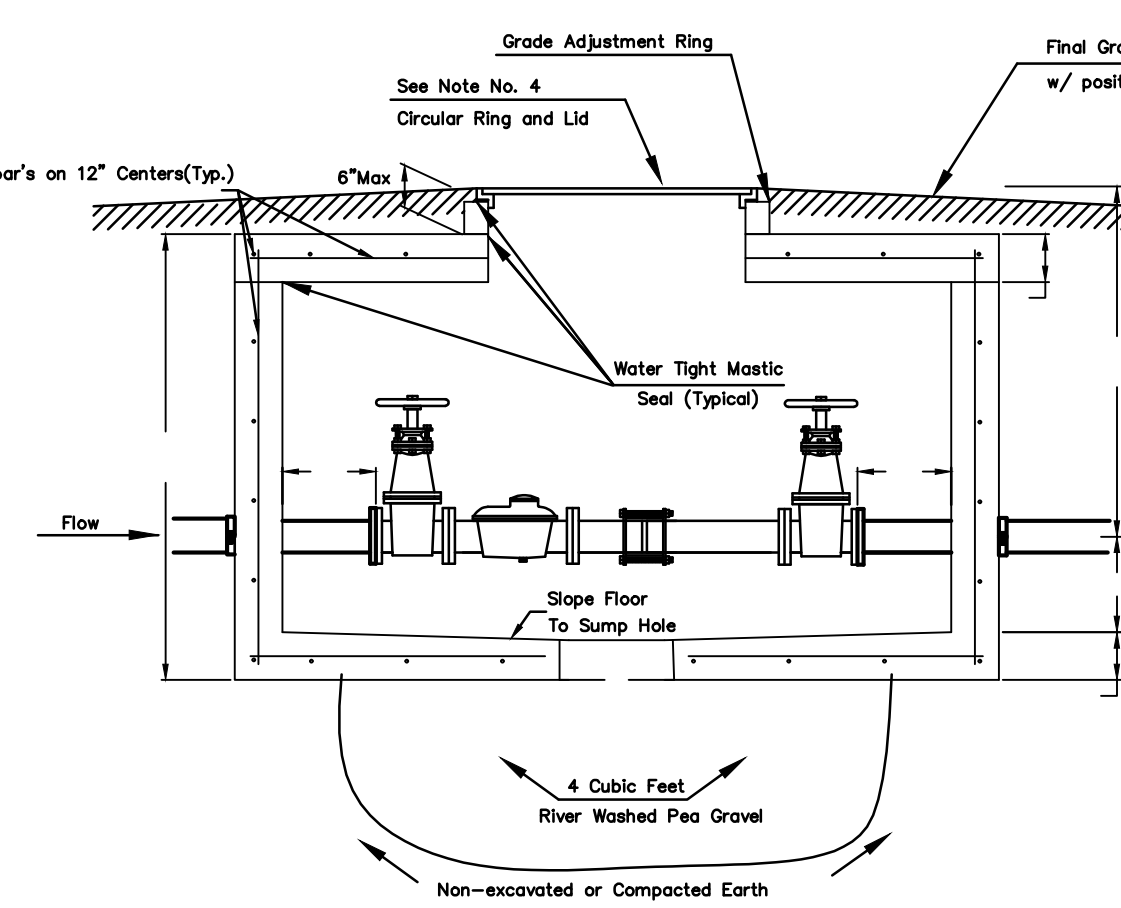
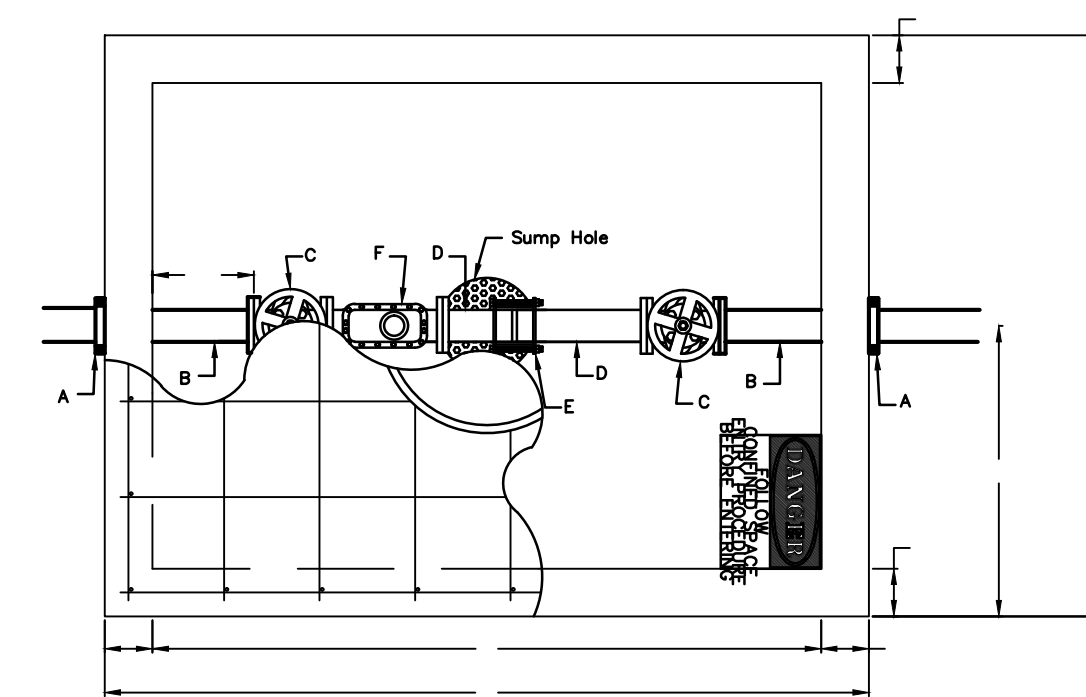
Notes For All Services - 3" thru 12":

- When the standard vault dimensions are not applicable, such as when additional space is required for special pipe, fittings, additional meters, etc. the design engineer shall design a vault with the required dimensions for Public Works and Utilities approval.
- The vault shall be poured concrete, cement blocks (voids to be completely filled with 2500 P.S.I. concrete), or approved precast structure (such as Clutter Inc. vaults approved 8/1/2000). The intent of these details shall not be limited by drawings or standards of precast structures.
- Vault location to be determined by Public Works and Utilities prior to construction and approved by Department's field supervisor prior to installation. A final inspection will be required for acceptance. Vault location standards include but not limited to: not to be located where subjected to vehicular loads, not to be located in any right-of-way or utility easement, and must be located on the property being served.
- The manhole ring and lid shall be Neenah R-6034 Frame with Type "C" Solid Lid and Drop Down Handle or US Foundry APS-30x30 (Aluminum). Where applicable the standard 10" Public Works and Utilities pattern meter reading lid and ring shall be located directly above water meter register. All meter registers shall have an approved lid directly vertical above. All joints of concrete to concrete or metal to concrete in the construction of the vault shall have an approved water tight mastic joint seal.
- Any fittings or appurtenances required to achieve proper elevation of pipe through the vault shall be provided by the contractor and appropriately noted on as-builts submitted by the inspecting engineer. Such fittings shall be a minimum of 2' from the exterior wall of vault.
- For all domestic services larger than 3" the contractor shall provide an outlet flange connection as shown 8" from the inside wall. Inlet and outlet wall sleeves shall be provided and installed by the contractor and shall be in alignment with one another. The inlet and outlet pipe shall be ductile iron pipe, cement lined, Class 150 per Standard Specifications and shall be continuous through vault wall and joint no less than 2' from the exterior wall of vault. Flanges of inlet and outlet pipes shall be in proper alignment and bolt pattern shall be rotated in such a way that valves and other fittings shall be in their proper vertical alignment when installed.
- For all services 4" and larger the contractor shall install a mega lug, restrained joint, or approved equal on the exterior walls of the vault, which shall be manufactured of ductile iron conforming to ASTM A 536-80, heat treated to a minimum hardness of 370 BHN and have a working pressure of at least 250 P.S.I. For all services smaller than 4" the contractor shall install an approved vault clamp on the exterior walls of the vault.
- All valves, meters, assemblies, and fittings shall be provided with sufficient concrete or other approved supports to the vault floor.
- The "Confined Space Warning" sign shall be fastened to the top of all vaults. If necessary for landscaping or site considerations, the sign may be fastened to the vault lid if it does not impede access to the handle. Acceptable materials: Aluminum 73415HH, Plastic 73439HH, or S.A. Vinyl 73463HH.
- All meters shall have an electronic read register compatible with the current City of Wichita meter reading system. All detector meters shall be an 5/8 cubic foot Badger meter with ERT register or approved equal. Gallon meters shall not be accepted.
- Additional Notes For Fire Services:
  - A post indicator valve (PIV) is an option for the outlet valve and may be requested by the architect or owner. The PIV is not required by City of Wichita ordinance.
  - When Siamese connections are required by the Wichita Fire Department, refer to the current City Code Section 15.
  - If due to any reason the completed vault retains ground or drainage water in excess of 4" in depth from the floor of the vault, the property owner shall be responsible for providing and installing an appropriate automatic sump pump or approved equal, as well as any other appurtenances required to make such system function as intended.
  - The property owner is responsible for completing an "Application for Private Fire Protection" prior to final acceptance of the project.



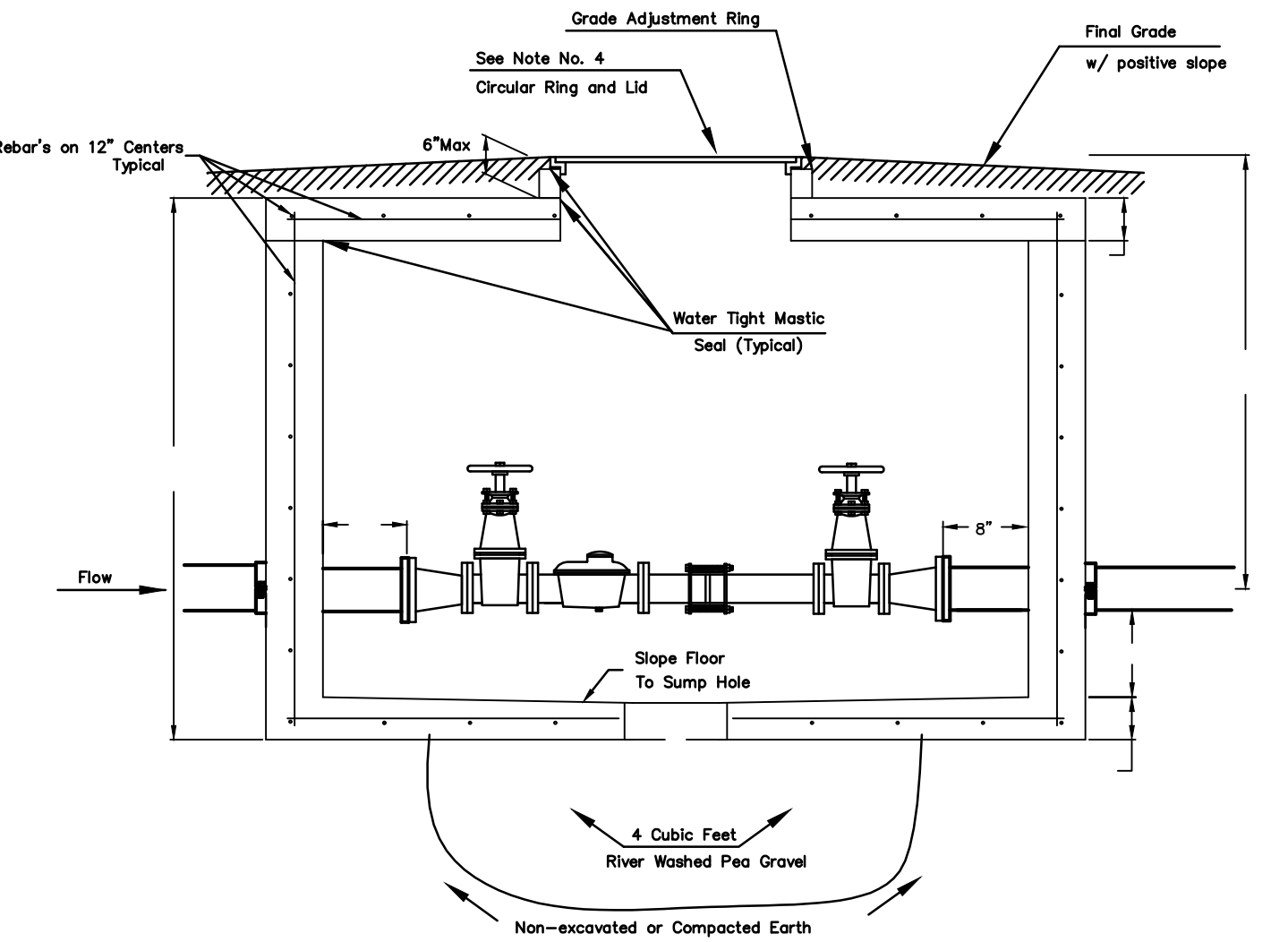
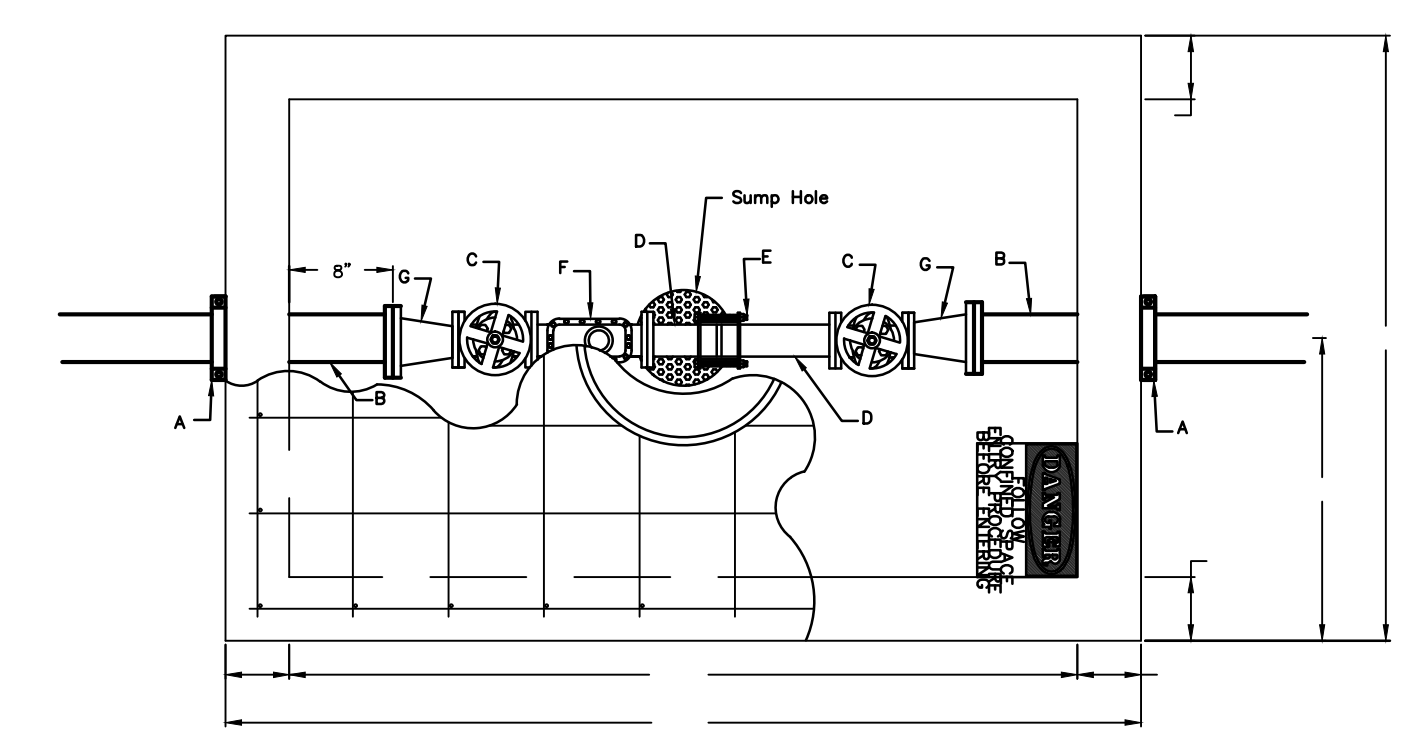
- A - 4" Vault Clamp
- B - Min. 3' Piece of 4" FL x PE DICTL Pipe
- C - 3" Flange Non-rising Stem Gate Wheel Valve
- D - 3" FL x PE Pipe
- E - 3" Flex Coupling
- F - 3" Badger Recordall II Turbo Cubic Foot Meter with ERT Register or Sensus W-3500R Cubic Foot Meter with AMR Register.
- G - 3" x 4" FL Reducer

### 3" Domestic Service



- A - 4" Vault Clamp
- B - Min. 3' Piece of 4" FL x PE DICTL Pipe
- C - 4" Flange Non-rising Stem Gate Wheel Valve
- D - 4" FL x PE Pipe
- E - 4" Flex Coupling
- F - 4" Badger Recordall II Turbo Cubic Foot Meter with ERT Register or Sensus W-10000R Cubic Foot Meter with AMR Register.

### 4" Domestic Service

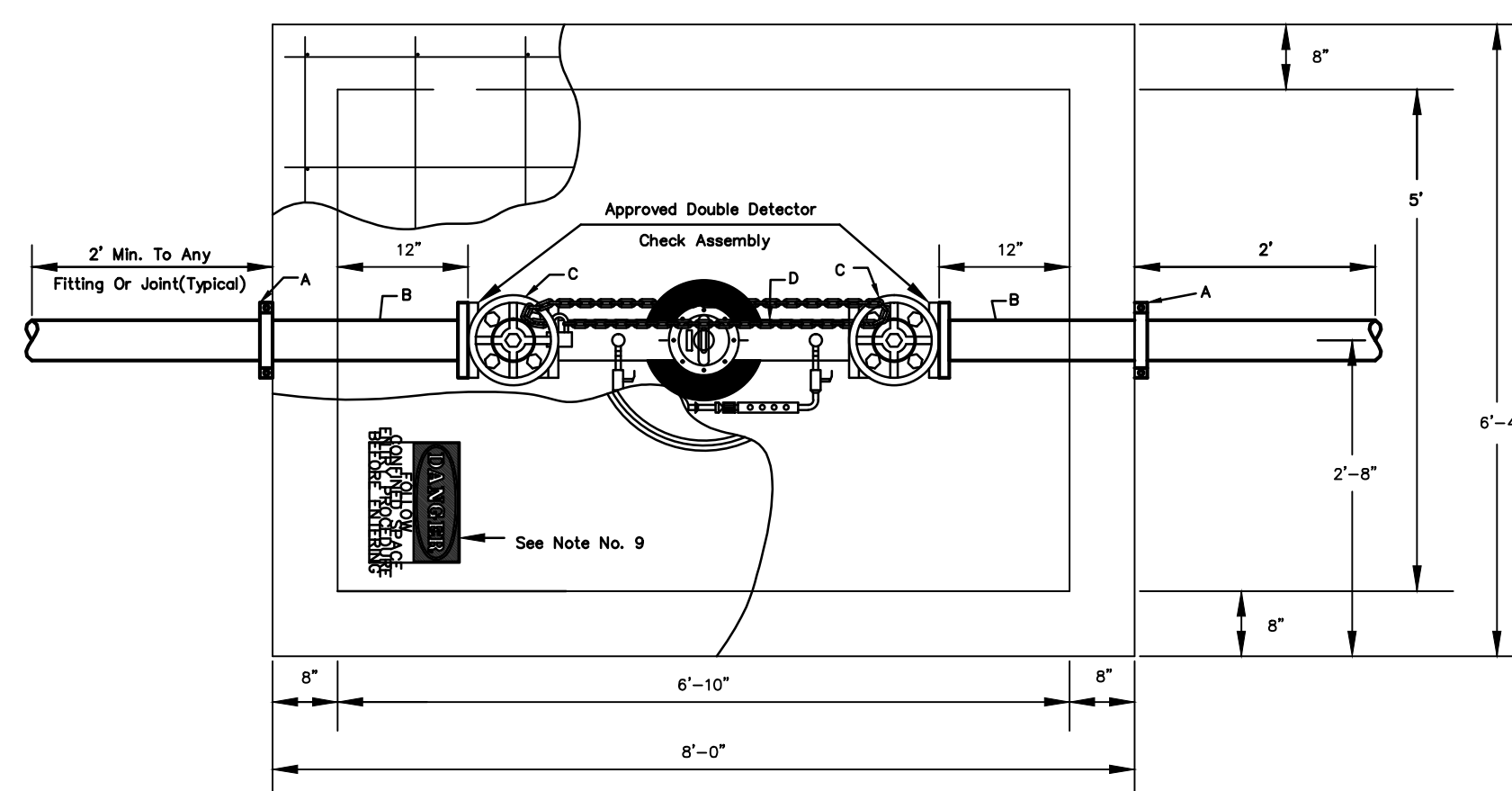


- A - 6" Mega Lug (See Note 7)
- B - Min. 3' Piece of 6" FL x PE DICTL Pipe
- C - 4" Flange Non-rising Stem Gate Wheel Valve
- D - 4" FL x PE Pipe
- E - 4" Flex Coupling
- F - 4" Badger Recordall II Turbo Cubic Foot Meter with ERT Register or Sensus W-10000R Cubic Foot Meter with AMR Register.
- G - 6" x 4" Flange Reducer

### 6" Domestic Service with 4" meter

NOTE:

INSPECTOR FROM PUBLIC WORKS AND UTILITIES TO BE CONTACTED 24 HOURS PRIOR TO INSTALLATION TO SET VAULT.  
CONTACT: 316-219-8928 OR 316-219-8929

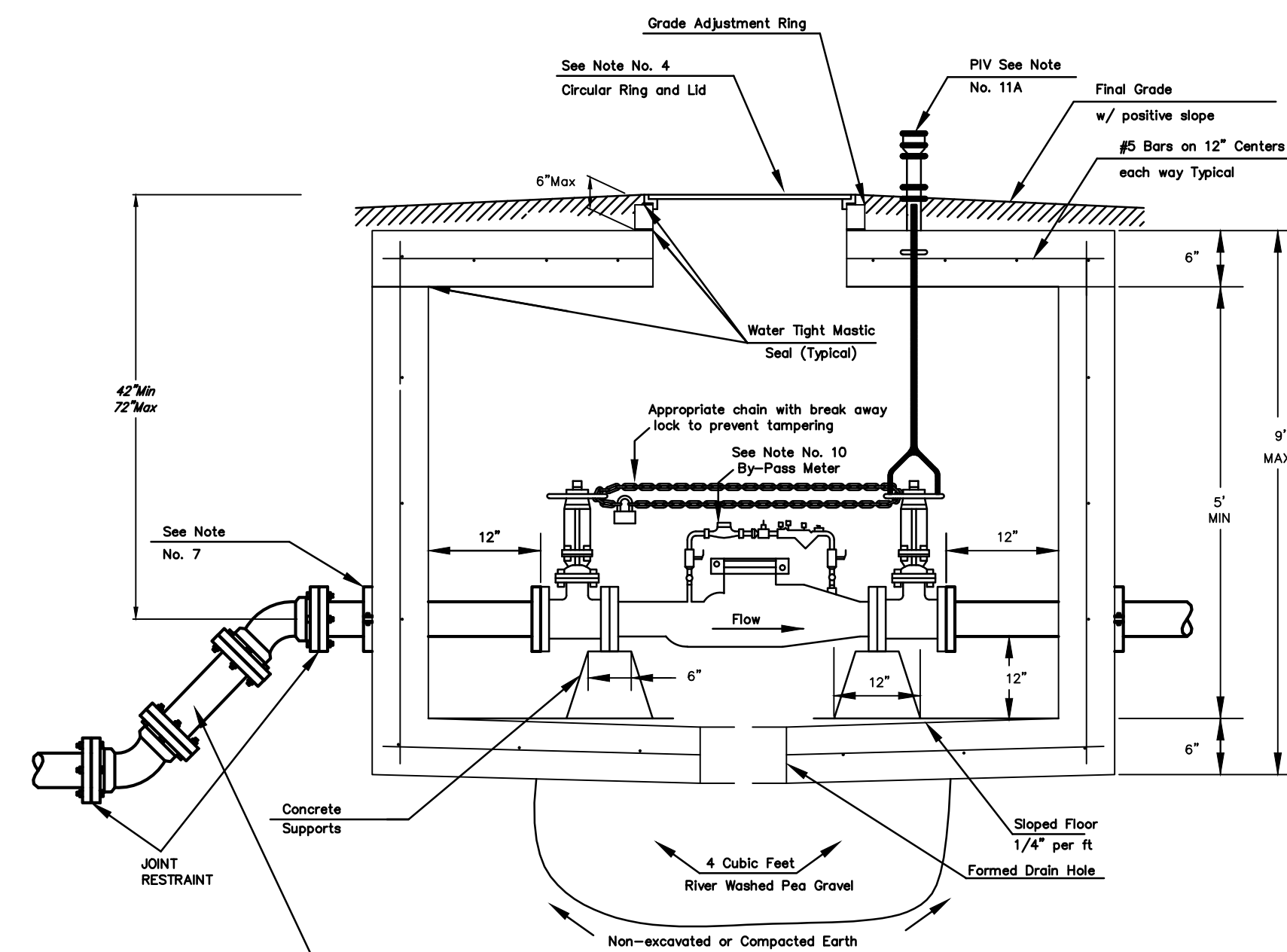


NOTE:

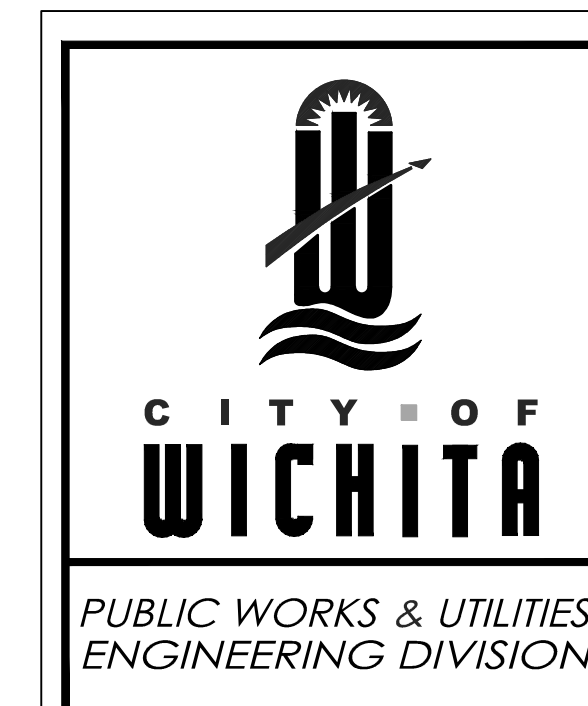
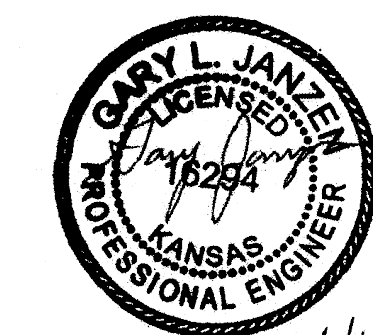
Domestic Services larger than 6" shall be custom designed by Engineer.

- A - Mega Lug (See Note 7)
- B - Min. 3'-8" Piece of FL x PE DICTL Pipe
- C - Flange Gate Valve, Wheel Operated
- D - Ames Model 300ISS or approved equal with meters(cubic foot) by-pass assembly

### 4" thru 8" Fire Service



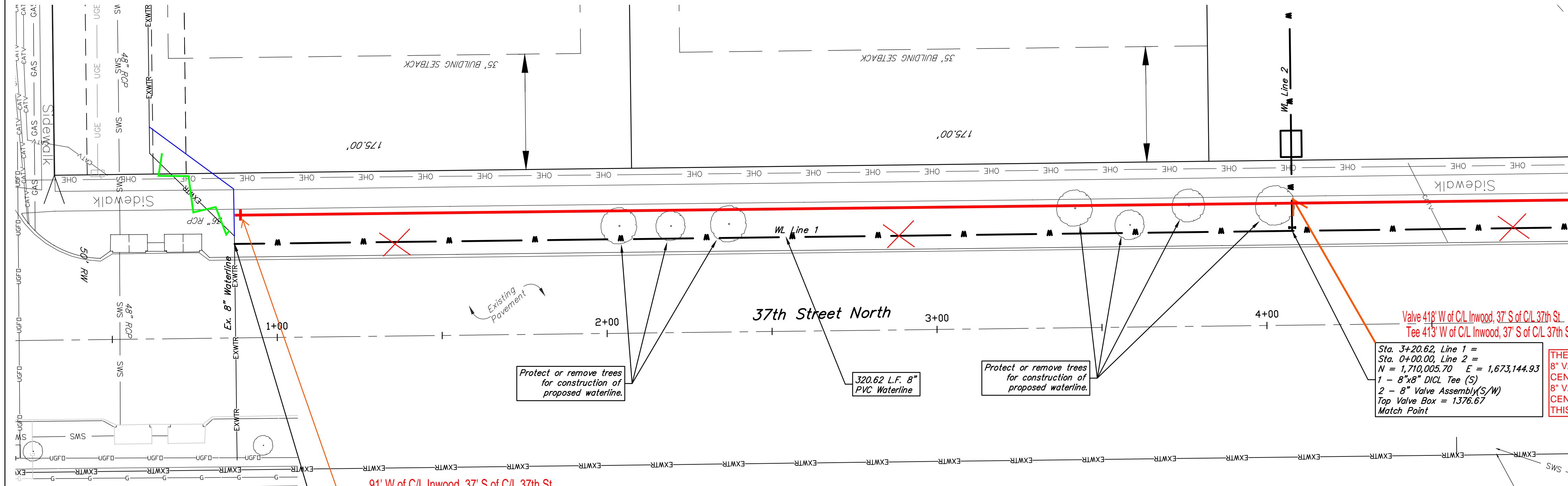
Use 45 degree fittings as necessary to keep depth of vault within 76 inch maximum. All fittings should be mega lug, restrained joint or approved equal.



STANDARD VAULT DETAILS AND METER ASSEMBLIES		
CITY ENGINEER <b>GARY JANZEN, P.E.</b>		
PROJECT NUMBER 1849 PPW	OCA NUMBER 607853	DATE 12/2011
CITY ENGINEER'S OFFICE CITY HALL - SEVENTH FLOOR 455 NORTH MAIN STREET WICHITA, KANSAS 67202-1620 (316) 268-4501		SHEET 4 of 9

# BENCHMARKS

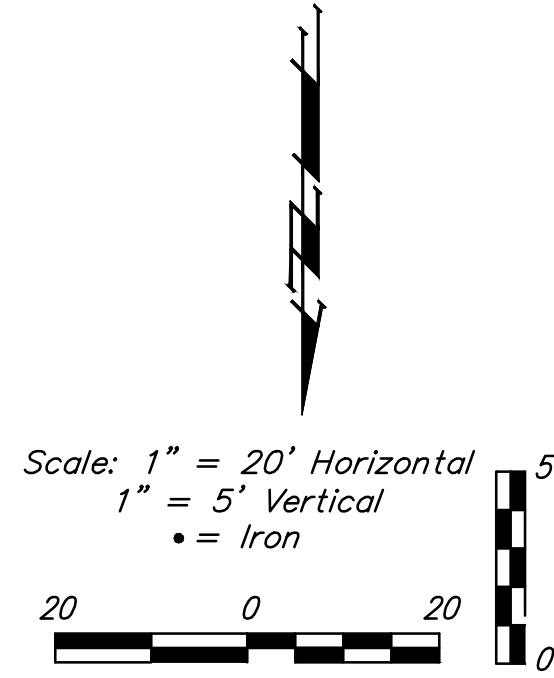
SITE BENCHMARK  
 City of Wichita disc 36th Street North and  
 Inwood, Northwest corner of hubguard on RCBC,  
 south of 37th St.  
 Elevation=1371.17 (NAVD 88)



Sta. 0+00.00, Line 1  
 N = 1,710,009.53 E = 1,673,465.53  
 Top Ex. 8" Water Line.  
 1 - 8"x8" Tapping Sleeve (W)  
 1 - 8" Tapping Valve  
 1 - 8" Valve Box  
 To be furnished & installed by the  
 COW Water Dept. (Contractor to  
 reimburse water dept. for Tapping  
 sleeve, valve and installation.)  
 Begin Water Line 1  
 Valve Box Elev. = 1374.40

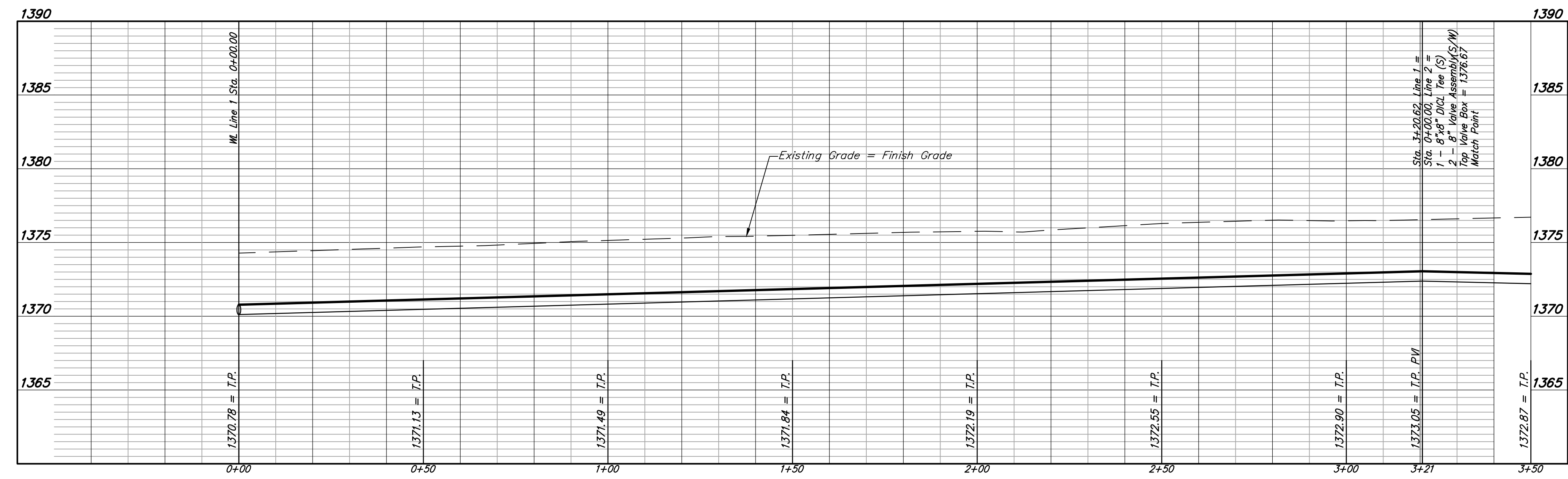
Sta. 3+20.62, Line 1 =  
 Sta. 0+00.00, Line 2 =  
 N = 1,710,005.70 E = 1,673,144.93  
 1 - 8"x8" DICT. Tee (S)  
 2 - 8" Valve Assembly(S/W)  
 Top Valve Box = 1376.67  
 Match Point

THESE VALVES ARE NEXT TO THE SIDEWALK.  
 8" VALVE LOOKING SOUTH IS 407' WEST & 38' SOUTH OF  
 CENTER LINE OF 37TH N & INWOOD  
 8" VALVE LOOKING WEST IS 410' WEST & 36' SOUTH OF  
 CENTER LINE OF 37TH N & INWOOD, TEST STATION NEXT TO  
 THIS VALVE.



C/L = center line

## LINE 1

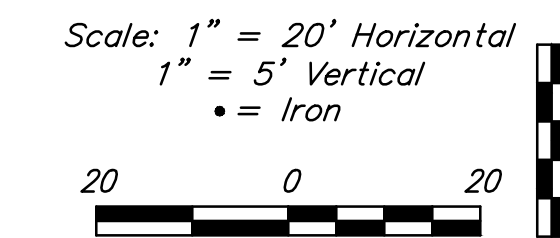
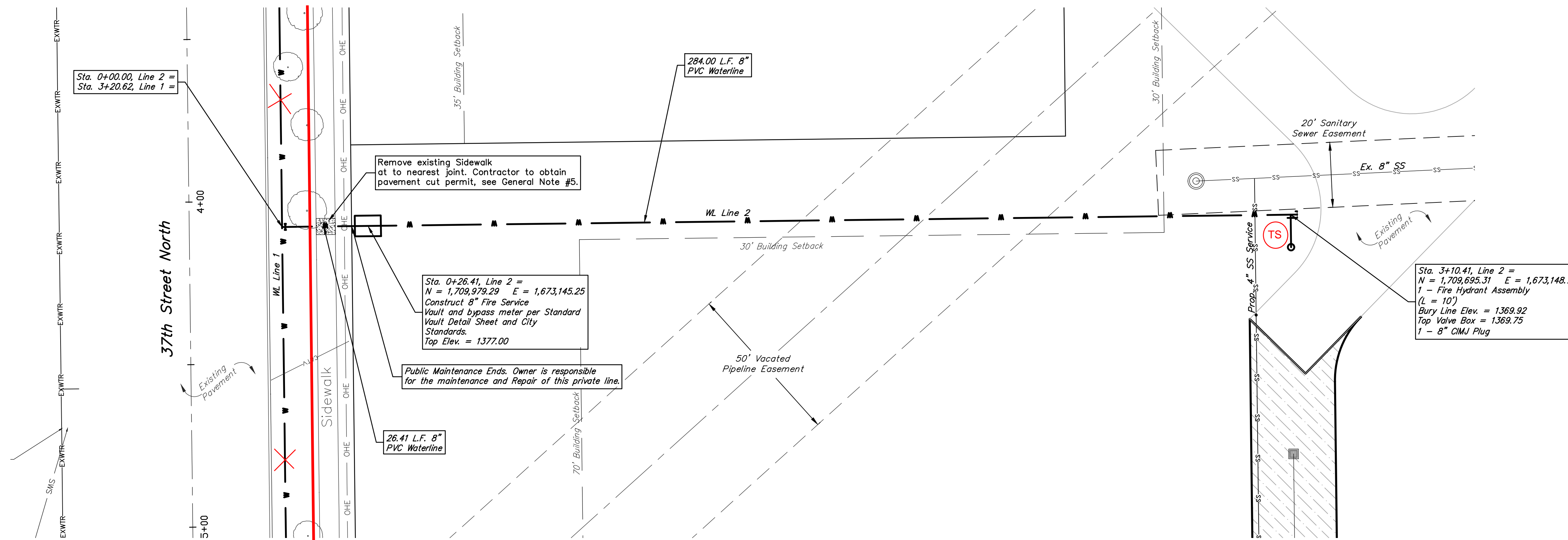


Wichita Children's Home  
**LINE 1**  
 Water Line Improvements

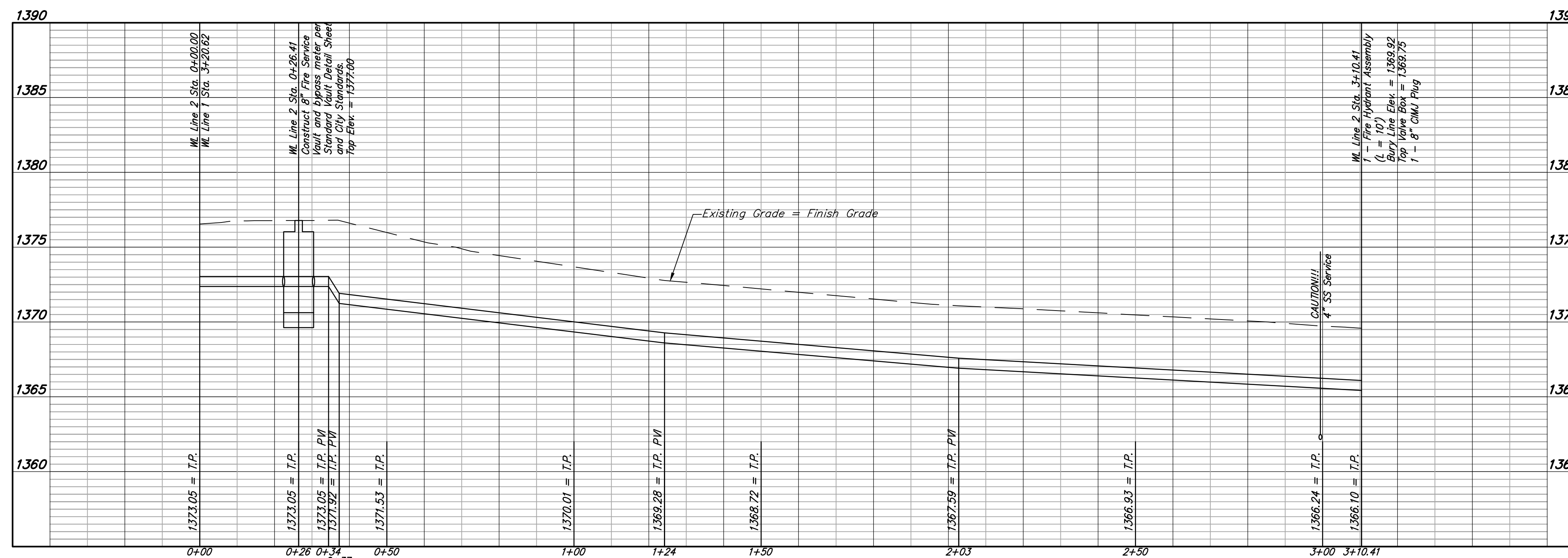


# BENCHMARKS

SITE BENCHMARK  
 City of Wichita disc 36th Street North and  
 Inwood, Northwest corner of hubguard on RCBC,  
 south of 37th St.  
 Elevation=1371.17 (NAVD 88)



## LINE 2



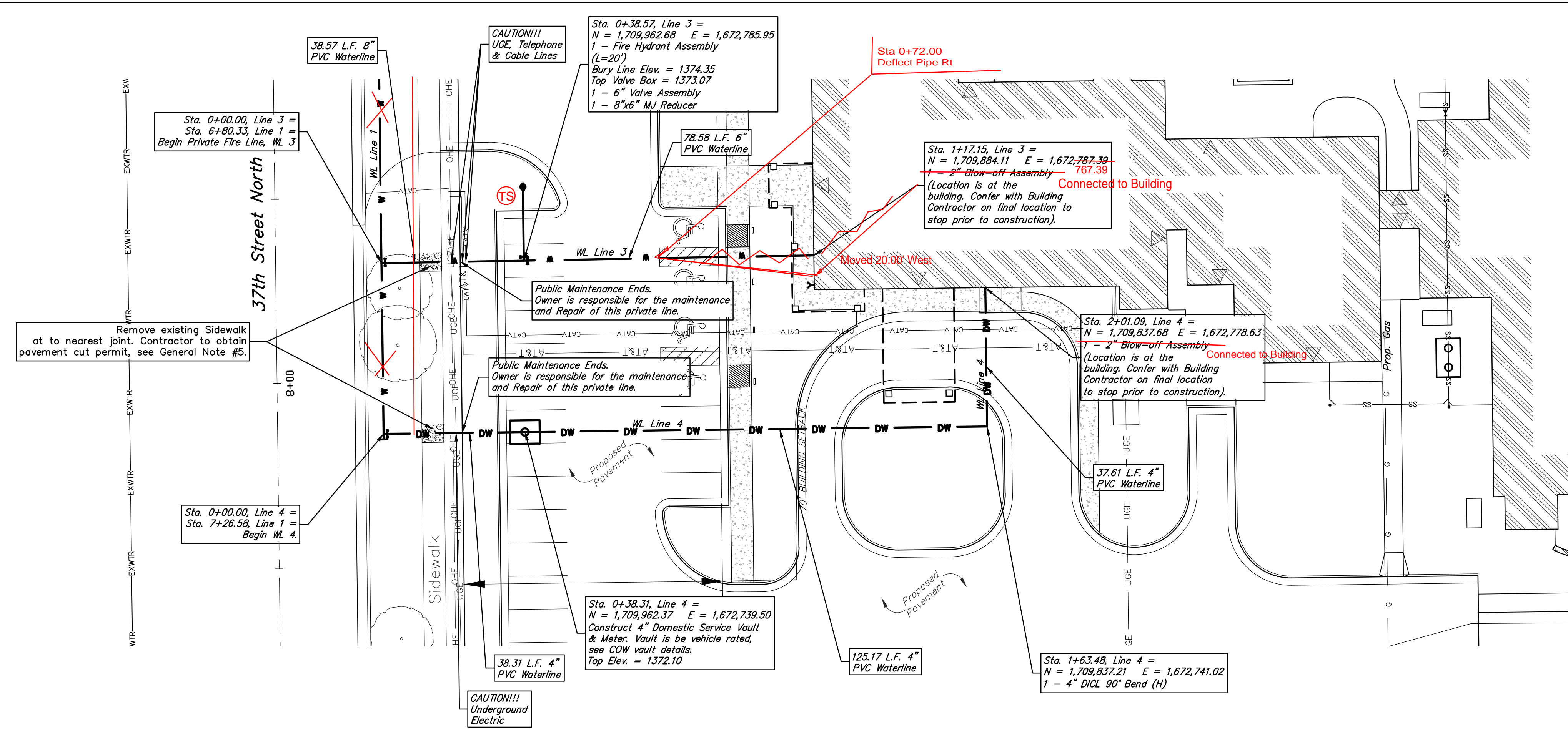
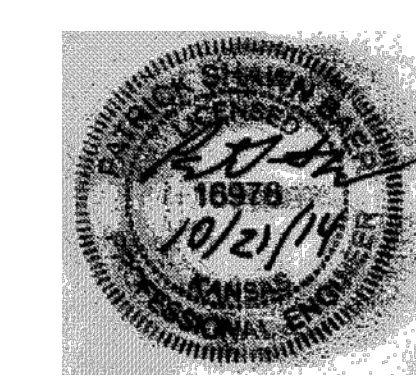
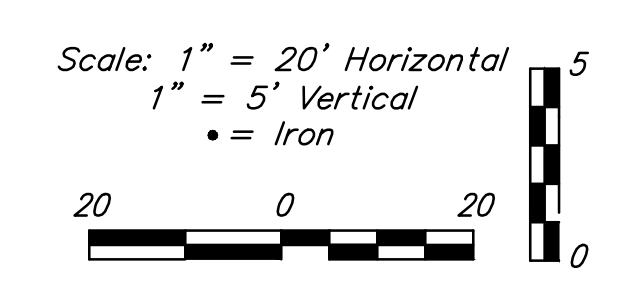
**Baughman Company, P.A.**  
 115 E. 15th St., Wichita, KS 67211 P 316-262-2271 F 316-262-5149  
 ENGINEERING & SURVEYING LICENSE NO. 16978  
 115 E. 15th St., Wichita, KS 67211 P 316-262-2271 F 316-262-5149

Wichita Children's Home  
**LINE 2**  
 Water Line Improvements

# BENCHMARKS

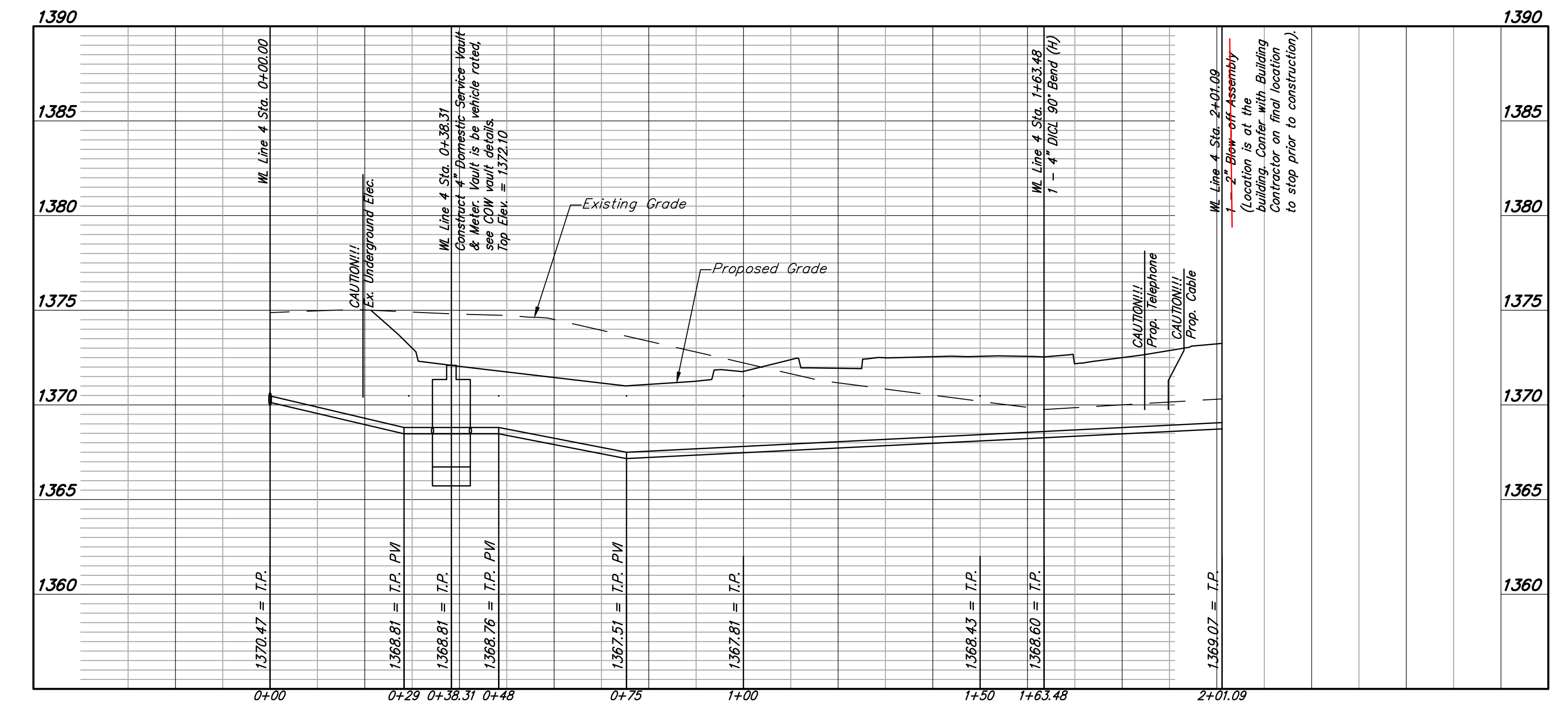
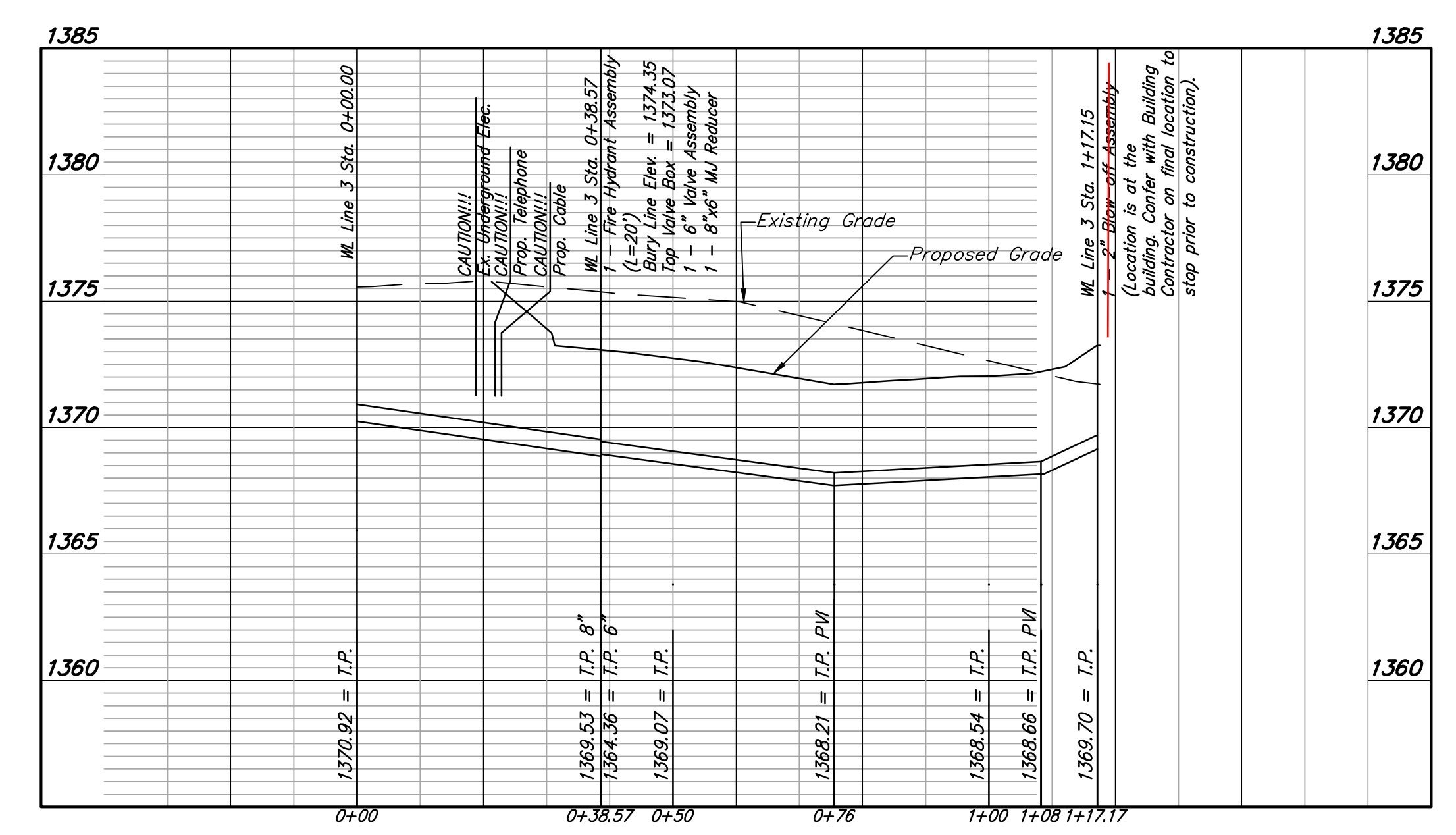
SITE BENCHMARK  
 City of Wichita disc 36th Street North and  
 Inwood, Northwest corner of hubguard on RCBC,  
 south of 37th St.  
 Elevation=1371.17 (NAVD 88)

NOTE:  
 Water Line 3 & 4 are private lines.  
 The City of Wichita is not responsible  
 for the maintenance and inspection  
 of this line.

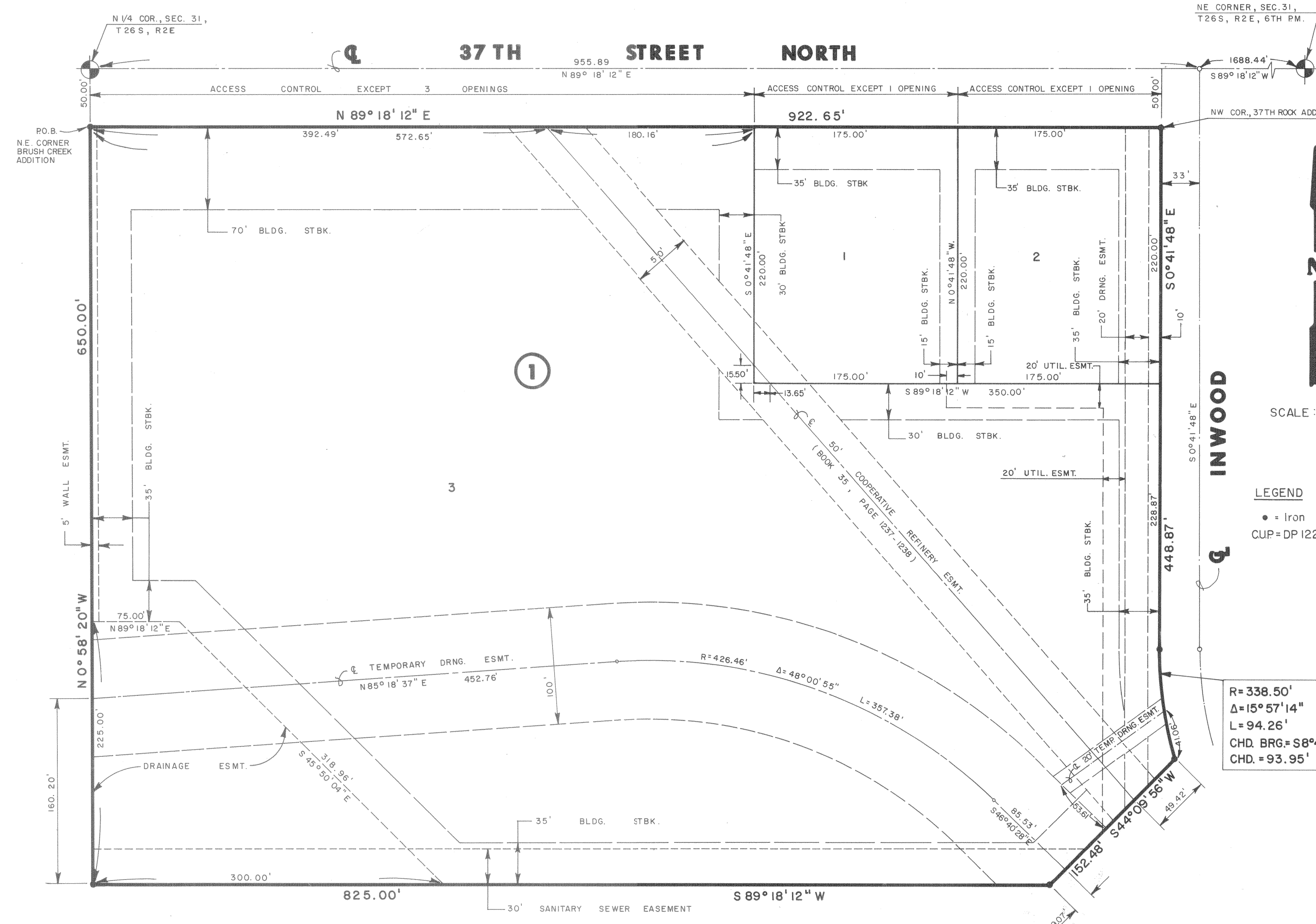


LINE 3

LINE 4



# FINAL PLAT OF PARCEL NO. 104 AN ADDITION TO WICHITA, SEDGWICK COUNTY, KANSAS



I, Kenneth H. Bengtson, a Civil Engineer and Registered Land Surveyor in Kansas, do hereby certify that I have been in responsible charge of surveying and platting of "PARCEL NO. 104", an addition to Wichita, Sedgwick County, Kansas, into Lots and a Block, the same being accurately set forth in the accompanying plat and described as follows:

A tract of land lying in the Northeast Quarter, Section 31, Township 26 South, Range 2 East of the 6th P.M., Sedgwick County, Kansas, more particularly described as follows:

Beginning at a point lying on the West line and 50.00 feet from the Northwest corner of said Northeast Quarter; thence N 89° 18' 12" E, 922.65 feet parallel with the North line of said Northeast Quarter to the Northwest corner of 37th ROCK ADDITION, an addition to Wichita, Sedgwick County, Kansas; thence Southerly along the West line of said 37th ROCK ADDITION, S 00° 41' 48" E, 448.87 feet to a point on a curve to the left; thence along said curve 94.26 feet, said curve having a central angle of 15° 57' 14", a radius of 338.50 feet, and a long chord of 93.95 feet, bearing S 08° 40' 25" E; thence S 44° 09' 56" W, 152.48 feet; thence S 89° 18' 12" W, 825.00 feet to a point on the West line of said Northeast Quarter; thence N 00° 58' 20" W, 650.00 feet to the point of beginning.

All easements within the above described property are being vacated and replatted by virtue of K.S.A. 12-512(b).

I hereby certify that the details of this plat are correct to the best of my knowledge and belief this 17<sup>th</sup> day of February, 1988.

*Kenneth H. Bengtson*  
Kenneth H. Bengtson, P.E. RLS #922  
Mid-Kansas Engineering Consultants, P.A.  
3500 N. Rock Road, Building #800  
Wichita, KS 67226

SCALE: 1" = 60'

LEGEND  
• Iron  
CUP=DP 122

Know all men by these presents that we the undersigned property owners of the land as above set forth in the Land Surveyors Certificate, have caused the same to be surveyed and platted into Lots, and a Block the same to be known as "PARCEL NO. 104" an addition to Wichita, Sedgwick County, Kansas. Easements for the construction and maintenance of public utilities and drainage as indicated on the accompanying plat, are hereby granted. The 5.00 foot wall easement is for the purpose of construction and maintenance of a private wall. The 100.00 foot and 20.00 foot temporary drainage easements shall be retained until such time as the drainage channel has been relocated and shall automatically be vacated herewith. All abutters rights of access to or from the South line of 37th Street North over and across the North line of PARCEL NO. 104 are hereby granted to the City of Wichita, provided however that Lot 3, Block 1, shall have access to 37th Street North at three locations and Lots 1 and 2, Block 1, shall have access to 37th Street North at one location each. All access locations shall be determined by the City Engineer.

R=338.50'  
Δ=15°57'14"  
L=94.26'  
CHD. BRG.=S8°40'25"E  
CHD.=93.95'

NORTHROCK REALTY PARTNERS,  
a Kansas general partnership  
By: *Virginia A. Ablak, Pres.*  
Virginia L. Ablak  
Killarney Investments, Inc.  
managing partner

STATE OF KANSAS  
SS:  
SEDGWICK COUNTY

Be it remembered that on this 17<sup>th</sup> day of February, 1988, before me a Notary Public in and for said State and County, came *Virginia A. Ablak* of Killarney Investments, Inc., to me personally known to be the same person who executed the foregoing instrument of writing and duly acknowledged the execution of the same. In testimony whereof I have hereunto set my hand and affixed my notarial seal the day and year above written.

*Annette L. Weakley*, Notary Public  
Annette L. Weakley  
My Appointment Expires: Aug 10, 1991



This plat of "PARCEL NO. 104" has been submitted to and approved by the Wichita, Sedgwick County Metropolitan Area Planning Commission, Wichita, Kansas.

Dated this 29th day of October, 1987.

WICHITA-SEDGWICK COUNTY METROPOLITAN AREA PLANNING COMMISSION

*John Parsons* Chairman  
*Marvin S. Krout* Secretary

This plat approved and all dedications shown hereon, if any, accepted by the City Council of the City of Wichita, Kansas, this 15<sup>th</sup> day of March, 1988.

*Robert G. Knight* Mayor  
*Dale E. Resa* Deputy City Clerk

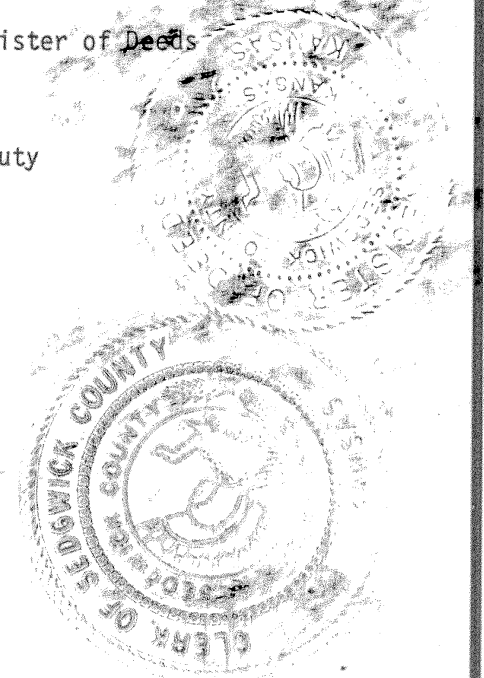
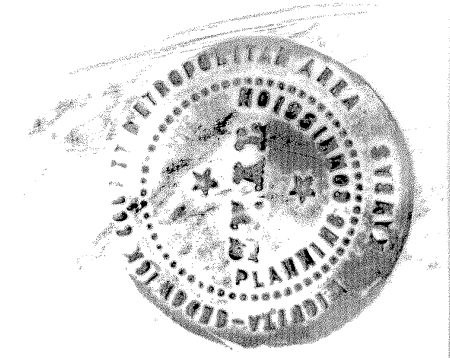
Entered on transfer record this 16<sup>th</sup> day of March, 1988.

*Ronald G. Miller* County Clerk

STATE OF KANSAS  
SS:  
SEDGWICK COUNTY

This is to certify that this instrument was filed for record in the Register of Deeds office this 15<sup>th</sup> day of MARCH, 1988, AT 9:00 A.M.

*Pat Kettler* Register of Deeds  
*Ed Resa* Deputy



20.00