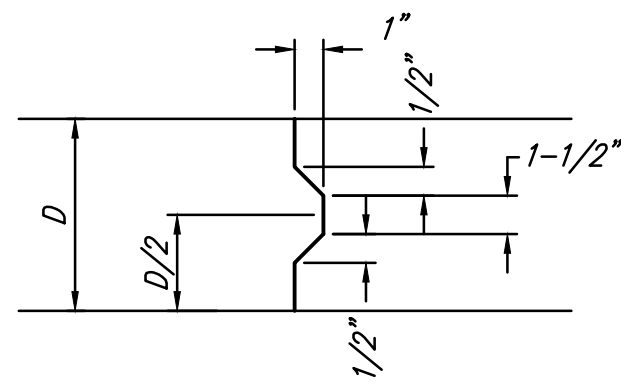
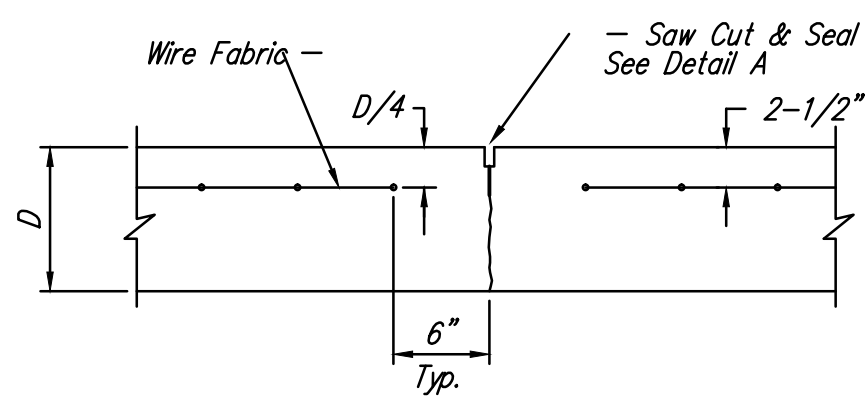


**EXPANSION JOINT (E.J.)**

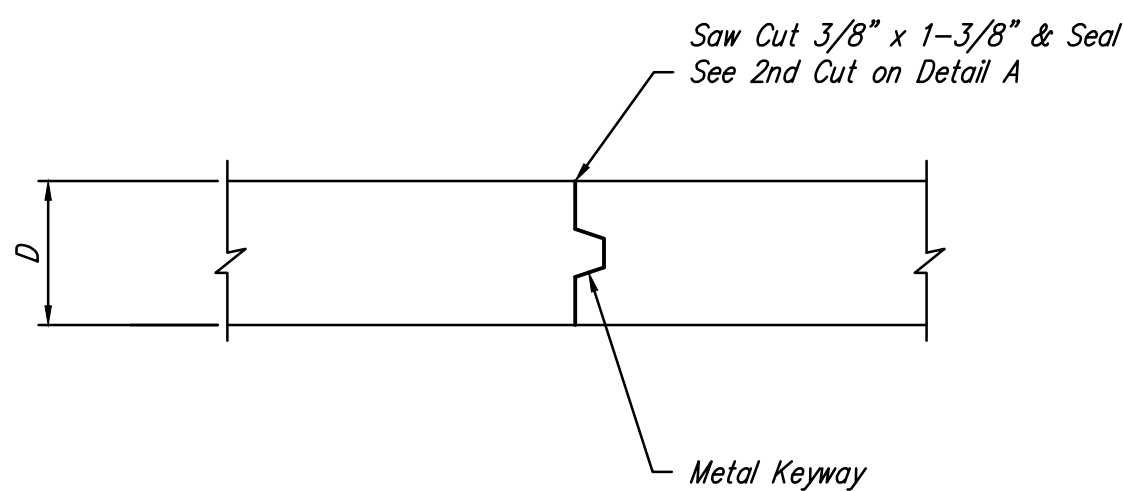
NOTE: Extra Thickness to be Subsidiary to Price of Square Yards Pavement



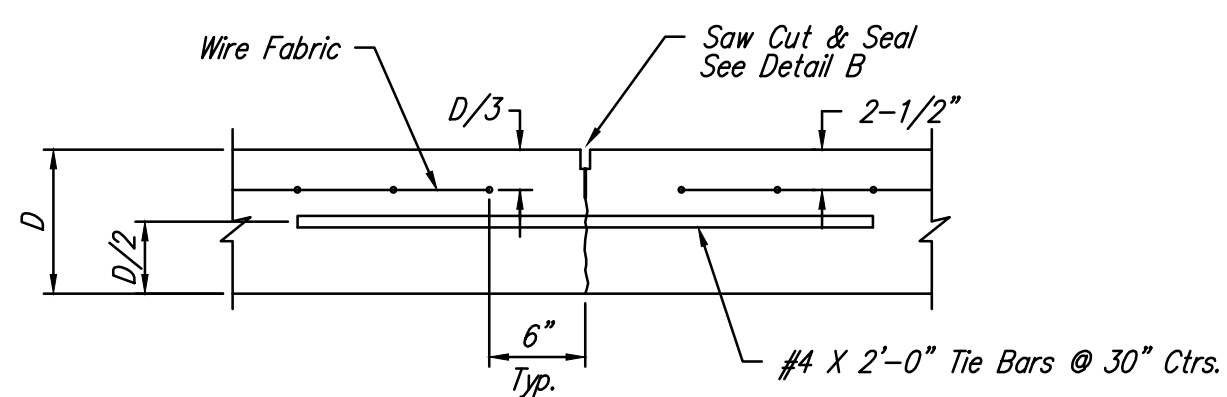
**KEYWAY DETAIL**



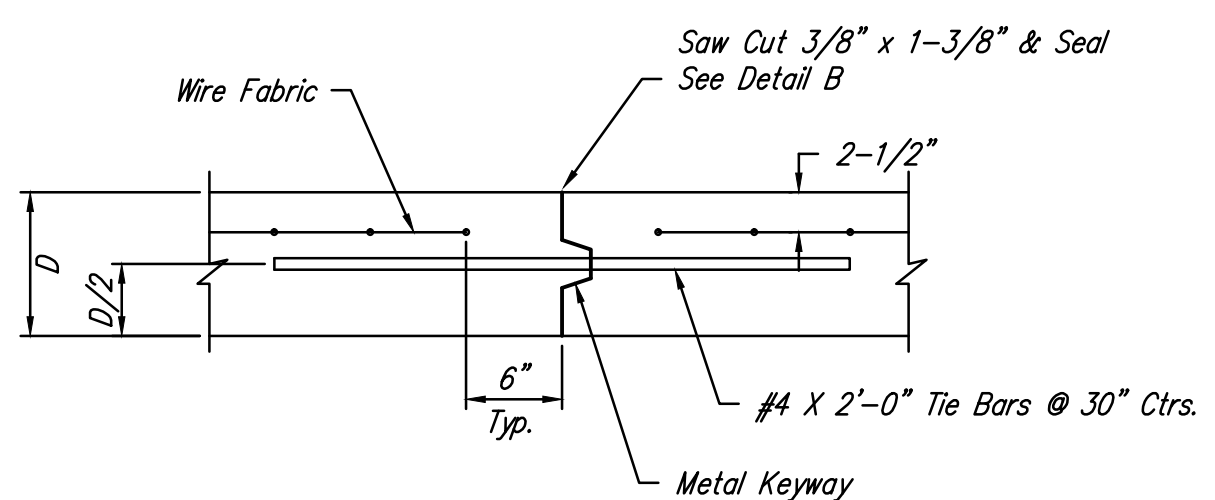
**CONTRACTION JOINT DETAIL (C.J.)**



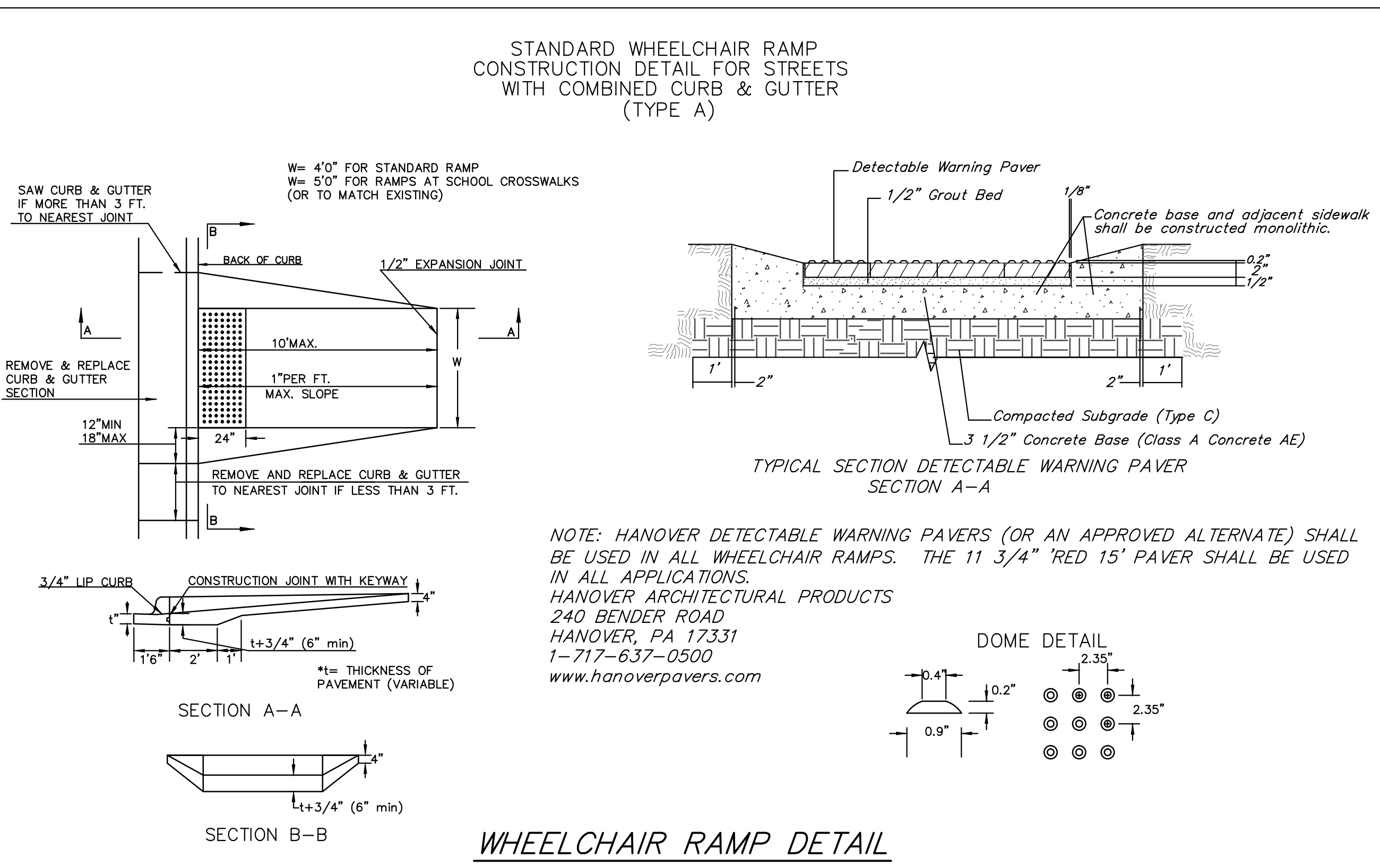
**LONGITUDINAL JOINT DETAIL (L.J.) "A"**



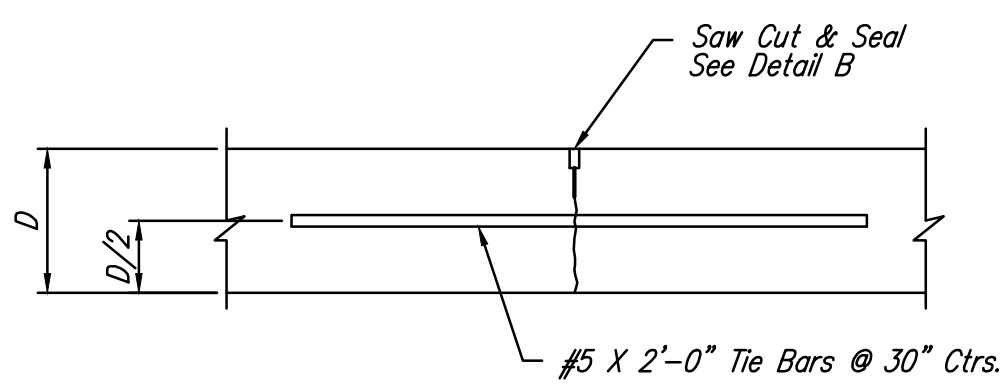
**LONGITUDINAL JOINT DETAIL (L.J.)**



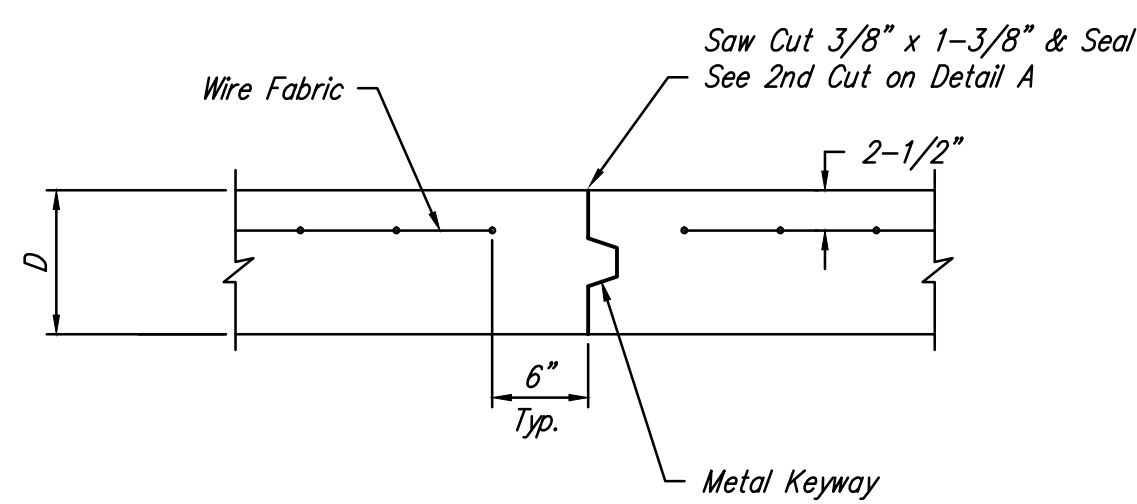
**OPTIONAL LONGITUDINAL JOINT DETAIL (L.J.) (CONSTRUCTION JOINT)**



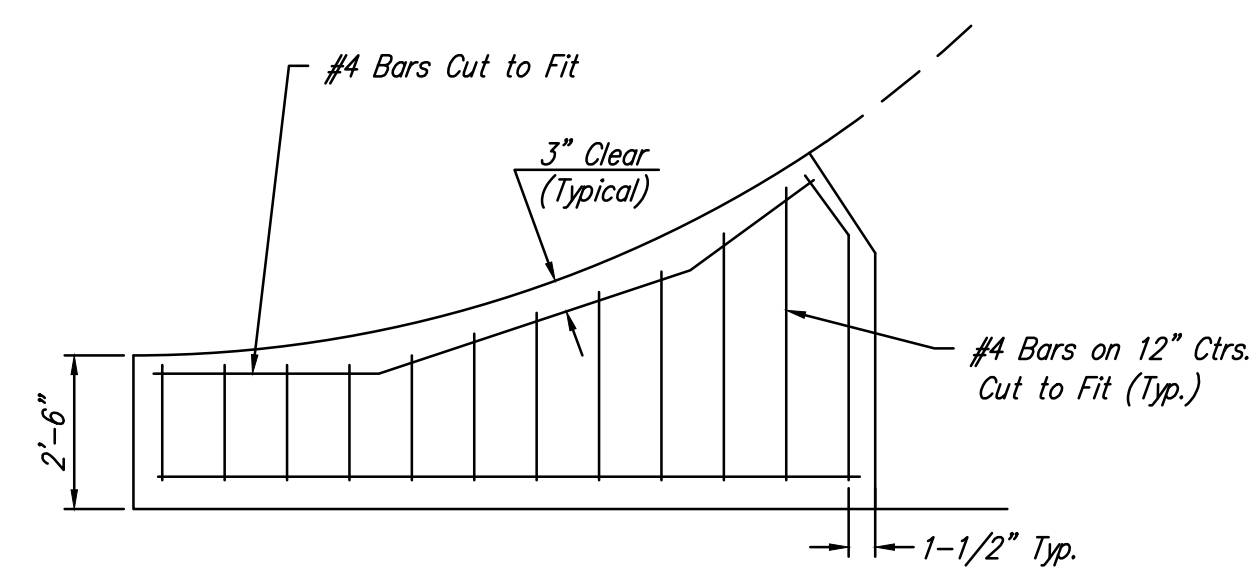
**WHEELCHAIR RAMP DETAIL**



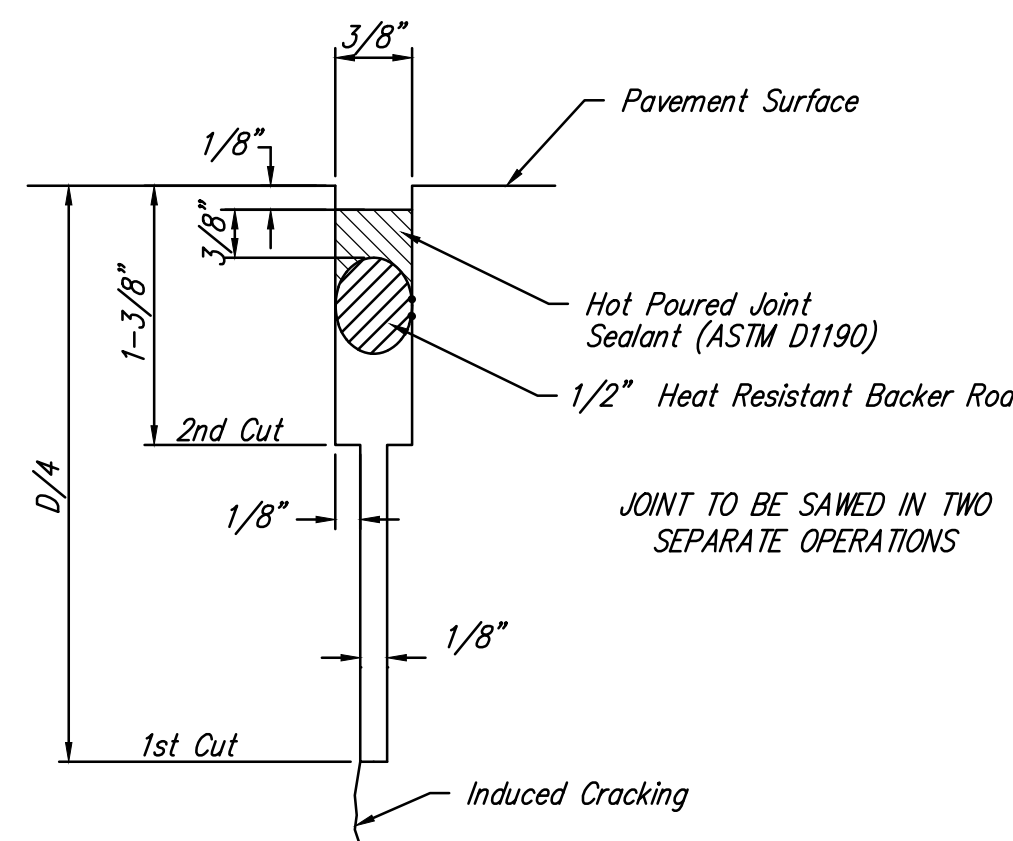
**LONGITUDINAL JOINT DETAIL (L.J.) "B"**



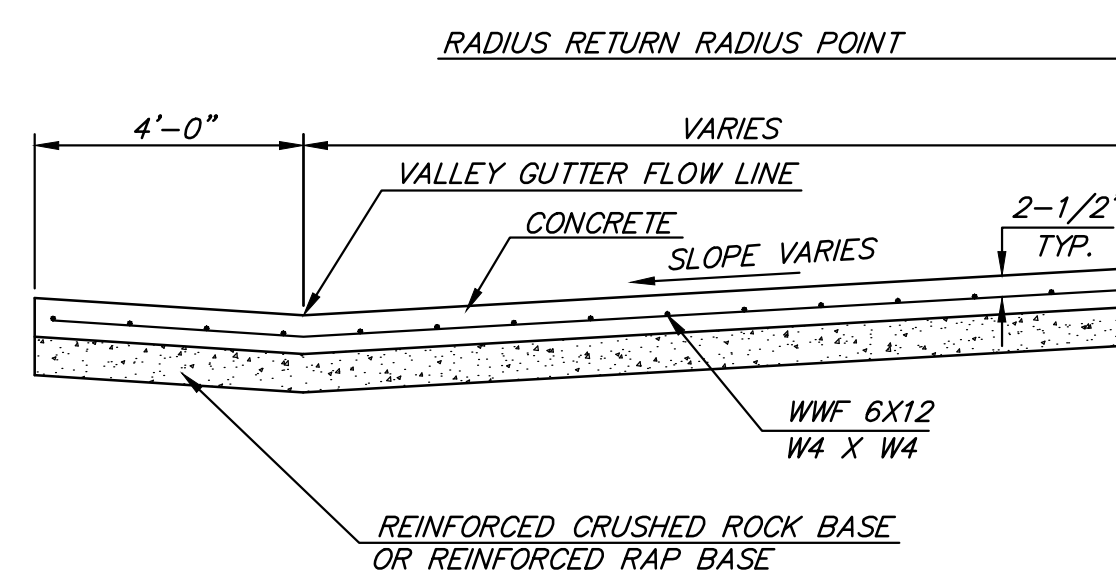
**OPTIONAL CONTRACTION JOINT (CONSTRUCTION JOINT)**



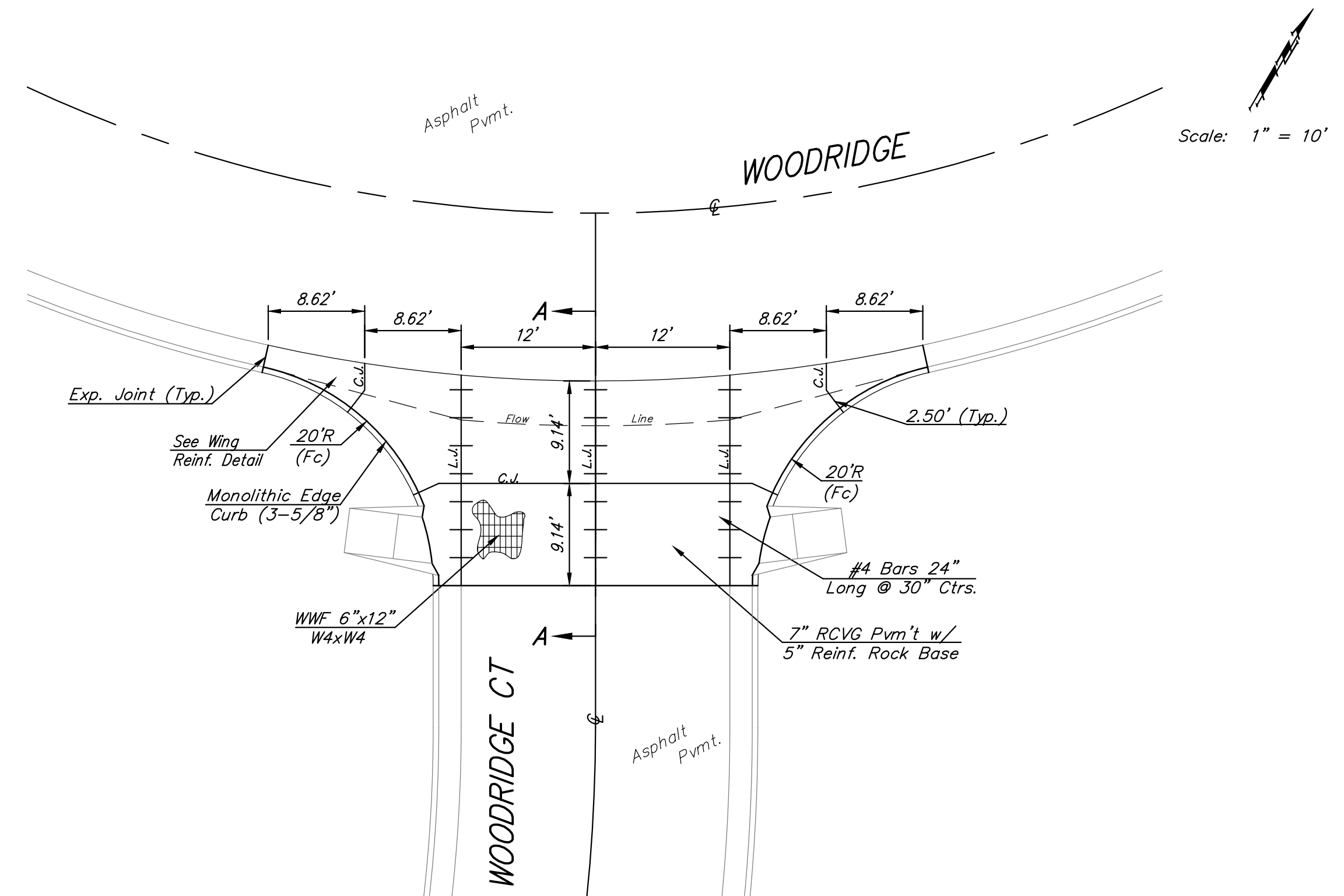
**WING REINFORCING DETAIL**



**SAW JOINT DETAIL**



**SECTION A-A**



**REINFORCED VALLEY GUTTER DETAIL**

6" x 12" W4XW4 WIRE FABRIC REINFORCING SHALL BE PLACED SUCH THAT THE WIRES WITH THE 6" SPACING WILL RUN PARALLEL WITH THE LONGITUDINAL JOINT.

<b>B</b> Baughman		The Waterfront 7th Addition VALLEY GUTTER DETAILS WHEELCHAIR RAMP DETAILS	
Baughman Company, P.A. 315 Ellis St. Wichita, KS 67211 P 316-262-7271 F 316-262-0149 ENGINEERING   SURVEYING   PLANNING   LANDSCAPE ARCHITECTURE			
PROJECT NUMBER	DESIGN AEG	DRAWN JAK	
REVISIONS:	APPROVED	DATE 8/14	
	SCALE 1" = 20"	SHEET	
			<b>6 OF 22</b>