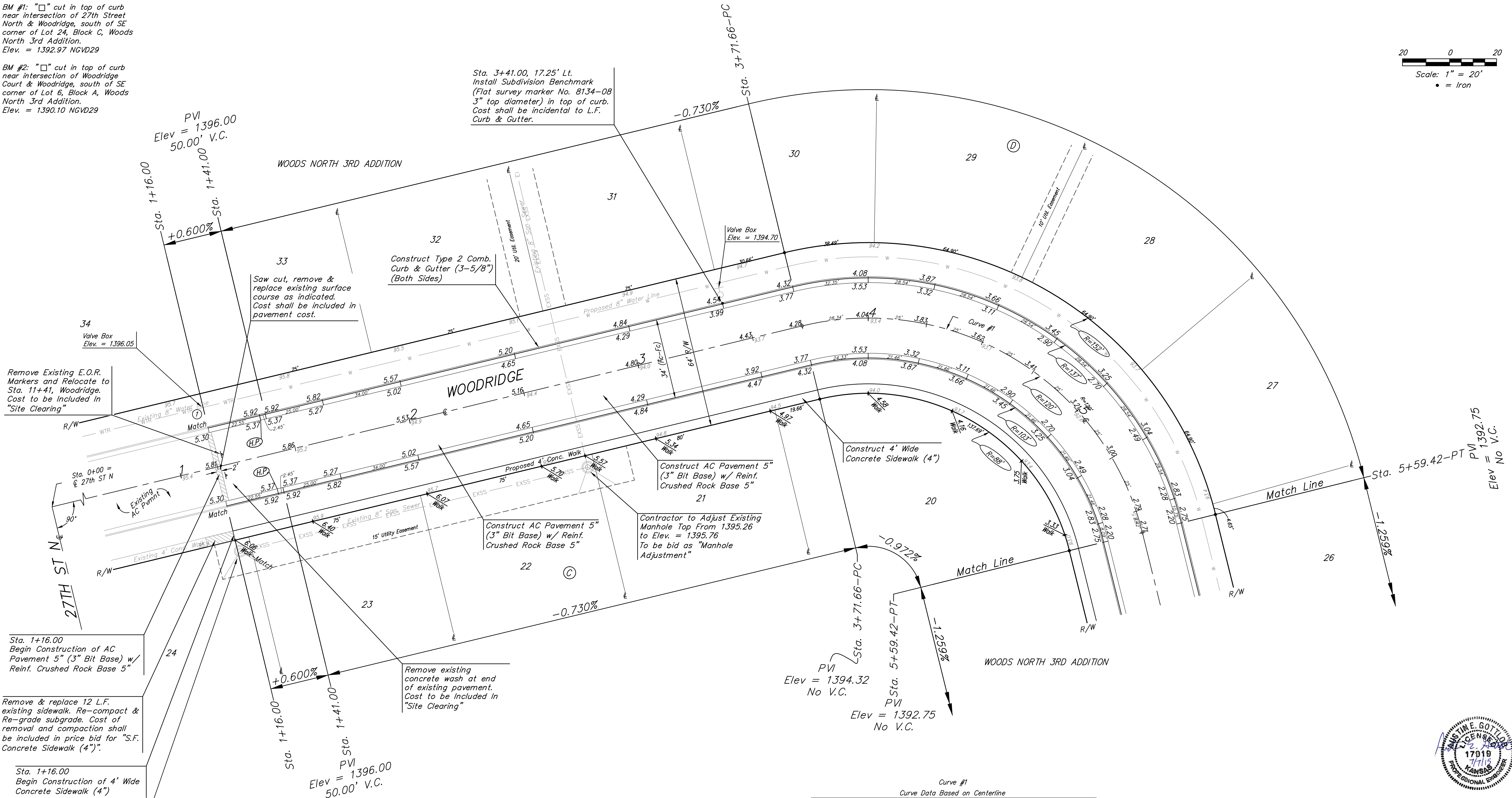
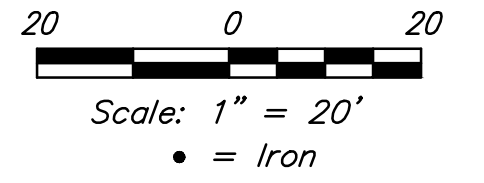


BENCHMARKS:

BM #1: "□" cut in top of curb near intersection of 27th Street North & Woodridge, south of SE corner of Lot 24, Block C, Woods North 3rd Addition.
Elev. = 1392.97 NGVD29

BM #2: "□" cut in top of curb near intersection of Woodridge Court & Woodridge, south of SE corner of Lot 6, Block A, Woods North 3rd Addition.
Elev. = 1390.10 NGVD29



Sta. 1+16.00
Begin Construction of AC Pavement 5" (3" Bit Base) w/ Reinf. Crushed Rock Base 5"

Remove & replace 12 L.F. existing sidewalk. Re-compact & Re-grade subgrade. Cost of removal and compaction shall be included in price bid for "S.F. Concrete Sidewalk (4)".

Sta. 1+16.00
Begin Construction of 4' Wide Concrete Sidewalk (4")

Manhole Rim Elev. = 1396.50

Remove existing concrete wash at end of existing pavement. Cost to be included in "Site Clearing"

Sta. 3+41.00, 17.25' Lt.
Install Subdivision Benchmark (Flat survey marker No. 8134-08 3" top diameter) in top of curb. Cost shall be incidental to L.F. Curb & Gutter.

Construct AC Pavement 5" (3" Bit Base) w/ Reinf. Crushed Rock Base 5"

Contractor to Adjust Existing Manhole Top From 1395.26 to Elev. = 1395.76 To be bid as "Manhole Adjustment"

Construct Type 2 Comb. Curb & Gutter (3-5/8") (Both Sides)

Saw cut, remove & replace existing surface course as indicated. Cost shall be included in pavement cost.

PVI Elev = 1394.32 No V.C.
Sta. 3+71.66-PC
PVI Elev = 1392.75 No V.C.
Sta. 5+59.42-PT

Curve #1
Curve Data Based on Centerline
Rad. = 120' Delta = 89°39'05" Tangent = 119.27'
Arc = 187.76' L.C. = 169.19' Def./ft. = 14.32436 Min.

Station	Arc	Face Chord Lengths		Defl.	Total Defl.
		8' Left	8' Right		
3+71.66	-	-	-	0'00'00"	0'00'00"
3+75.00	3.34'	4.04'	2.64'	0'47'51"	0'47'51"
4+00.00	25.00'	30.15'	19.76'	5'58'06"	6'45'57"
4+25.00	25.00'	30.15'	19.76'	5'58'07"	12'44'04"
4+50.00	25.00'	30.15'	19.76'	5'58'06"	18'42'10"
4+75.00	25.00'	30.15'	19.76'	5'58'07"	24'40'17"
5+00.00	25.00'	30.15'	19.76'	5'58'06"	30'38'23"
5+25.00	25.00'	30.15'	19.76'	5'58'07"	36'36'30"
5+50.00	25.00'	30.15'	19.76'	5'58'06"	42'34'36"
5+59.42	9.42'	11.38'	7.46'	2'14'56"	44'49'32"

Type 2 Comb. Curb & Gutter (3-5/8") to be constructed on the pavement on this sheet. Top of curb elevation are given for full height curb (6-5/8").



Baughman Woods North Addition - Phase III
WOODRIDGE
Sta. 1+16.00 to Sta. 5+59.42

Baughman Company, P.A. 315 Ellis St. Wichita, KS 67211 P 316-262-7271 F 316-262-0149
ENGINEERING | SURVEYING | PLANNING | LANDSCAPE ARCHITECTURE

PROJECT NUMBER 472-85048	DESIGN AEG	DRAWN JAK
REVISIONS:	APPROVED	DATE 7/06/15
	SCALE Noted	SHEET 8 OF 22