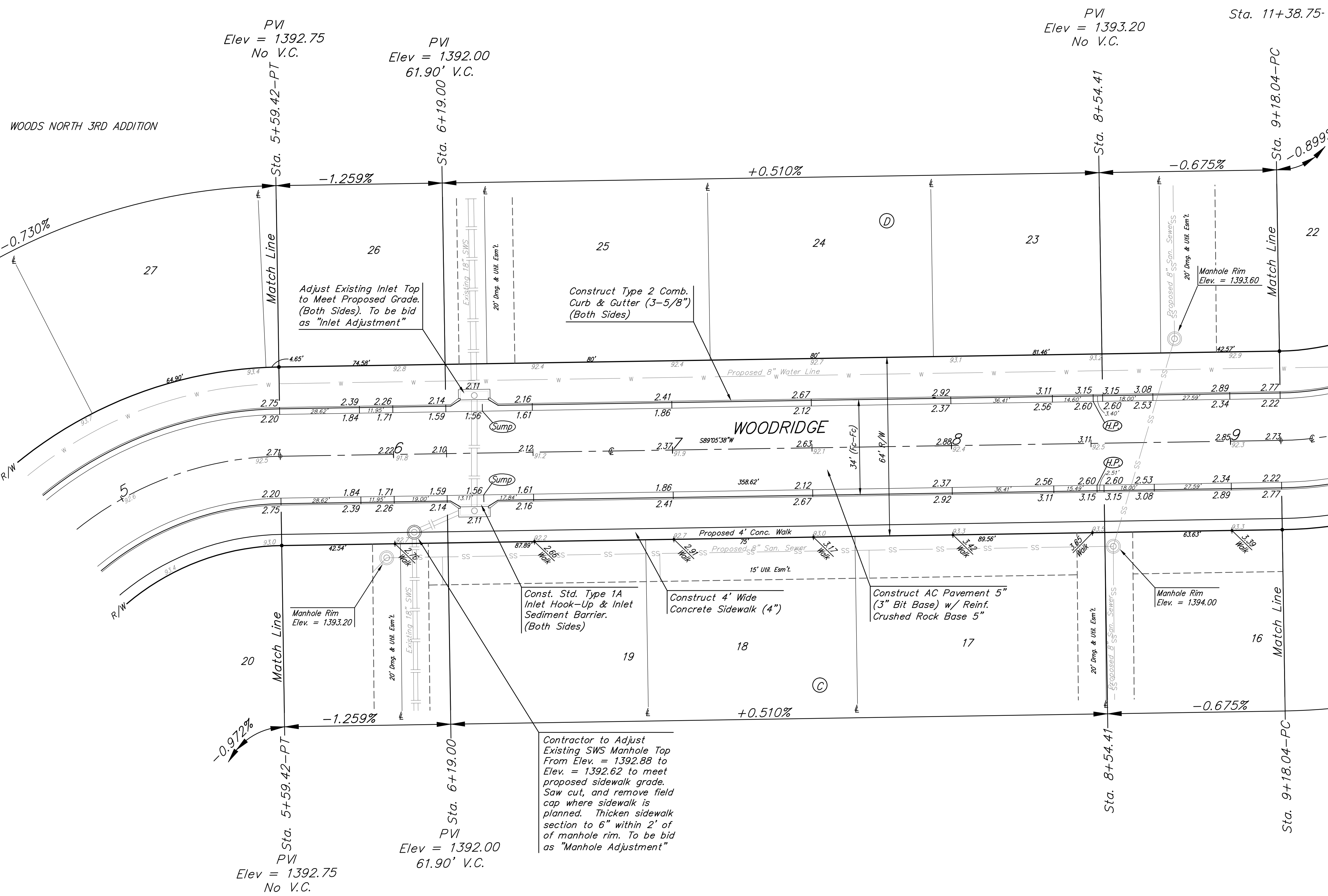
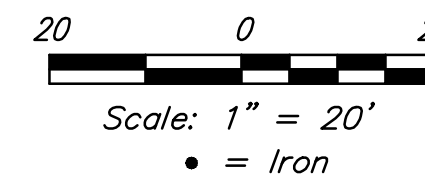


**BENCHMARKS:**

BM #1: "□" cut in top of curb near intersection of 27th Street North & Woodridge, south of SE corner of Lot 24, Block C, Woods North 3rd Addition.  
Elev. = 1392.97 NGVD29

BM #2: "□" cut in top of curb near intersection of Woodridge Court & Woodridge, south of SE corner of Lot 6, Block A, Woods North 3rd Addition.  
Elev. = 1390.10 NGVD29



PVI  
Elev = 1392.75  
No V.C.

PVI  
Elev = 1392.00  
61.90' V.C.

PVI  
Elev = 1393.20  
No V.C.

Sta. 11+38.75-

PVI  
Elev = 1392.75  
No V.C.

PVI  
Elev = 1392.00  
61.90' V.C.

Sta. 8+54.41

Sta. 9+18.04-PC

Adjust Existing Inlet Top to Meet Proposed Grade. (Both Sides). To be bid as "Inlet Adjustment"

Construct Type 2 Comb. Curb & Gutter (3-5/8") (Both Sides)

Manhole Rim Elev. = 1393.60

Const. Std. Type 1A Inlet Hook-Up & Inlet Sediment Barrier. (Both Sides)

Construct 4' Wide Concrete Sidewalk (4")

Construct AC Pavement 5" (3" Bit Base) w/ Reinf. Crushed Rock Base 5"

Manhole Rim Elev. = 1394.00

Contractor to Adjust Existing SWS Manhole Top From Elev. = 1392.88 to Elev. = 1392.62 to meet proposed sidewalk grade. Saw cut, and remove field cap where sidewalk is planned. Thicken sidewalk section to 6" within 2' of manhole rim. To be bid as "Manhole Adjustment"

Type 2 Comb. Curb & Gutter (3-5/8") to be constructed on the pavement on this sheet. Top of curb elevation are given for full height curb (6-5/8").



		Woods North Addition - Phase III	
		<b>WOODRIDGE</b>	
Sta. 5+59.42 to Sta. 9+18.04		Baughman Company, P.A. 315 Ellis St. Wichita, KS 67211 P 316-262-7271 F 316-262-0149	
ENGINEERING   SURVEYING   PLANNING   LANDSCAPE ARCHITECTURE		PROJECT NUMBER 472-85048	DESIGN AEG
REVISIONS:		APPROVED	DRAWN JAK
			DATE 7/06/15
			SCALE Noted
			SHEET 9 OF 22