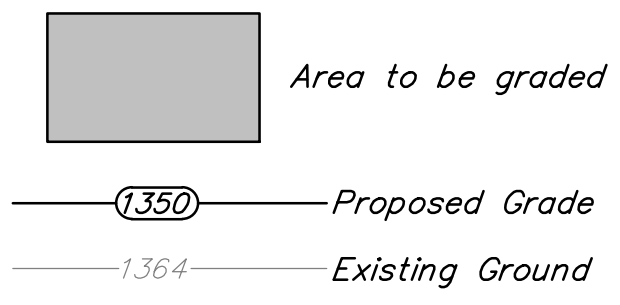
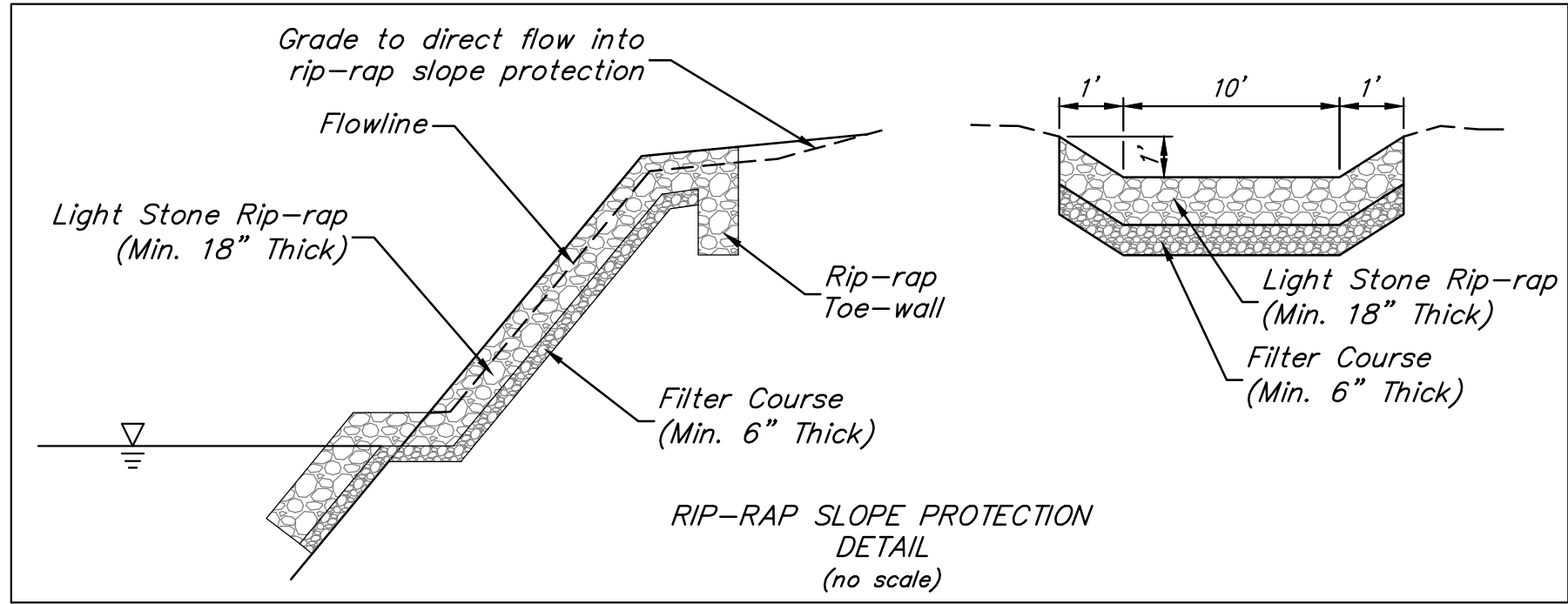


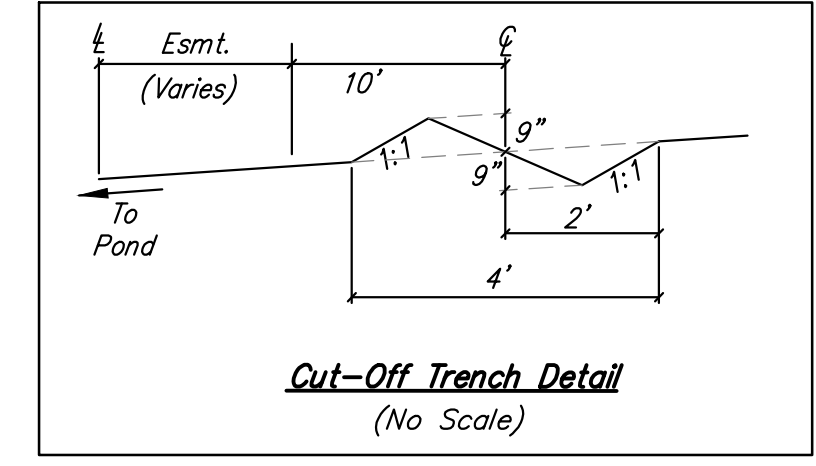
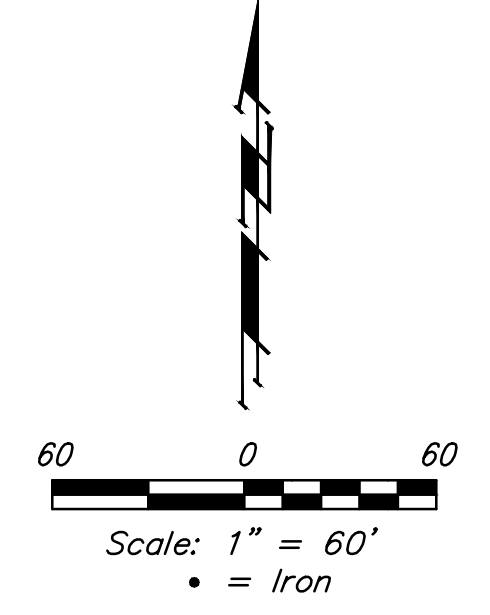
BENCHMARKS:
 Chiseled square cut on top of headwall of R.C.B.C., 31.1' southeast of the most southerly corner of Lot 1, Block A & 36.6' northeast of the northeast corner of Reserve "C".
 Elev. = 1349.83 NAVD88

Chiseled square cut on top of curb at west end of median, 89.6' south-southwest of the southwest corner of Lot 17, Block A & 86.2' south-southeast of the southeast corner of Lot 31, Block A.
 Elev. = 1348.62 NAVD88



NOTES:
 Contractor shall make sure all erosion control is in place before project is accepted. This plan represents the minimum standard. Any additional erosion control measures shall be installed by the Contractor as needed.

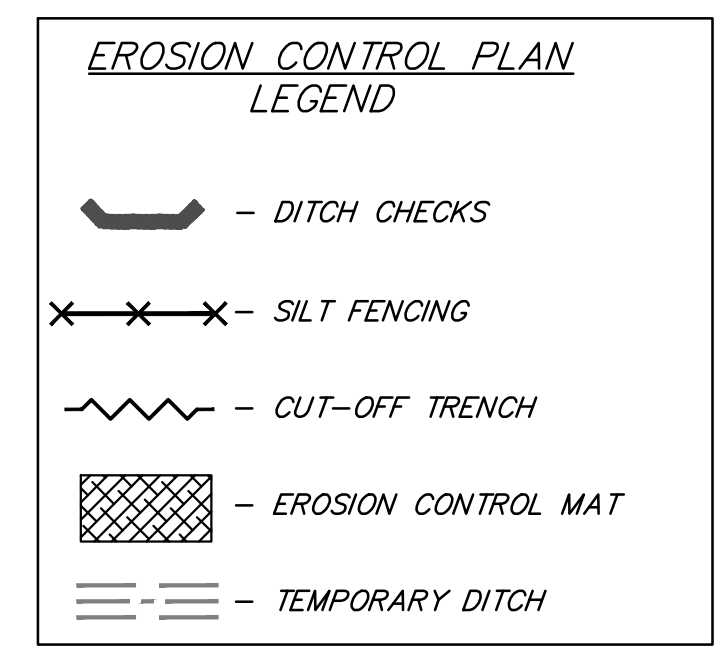
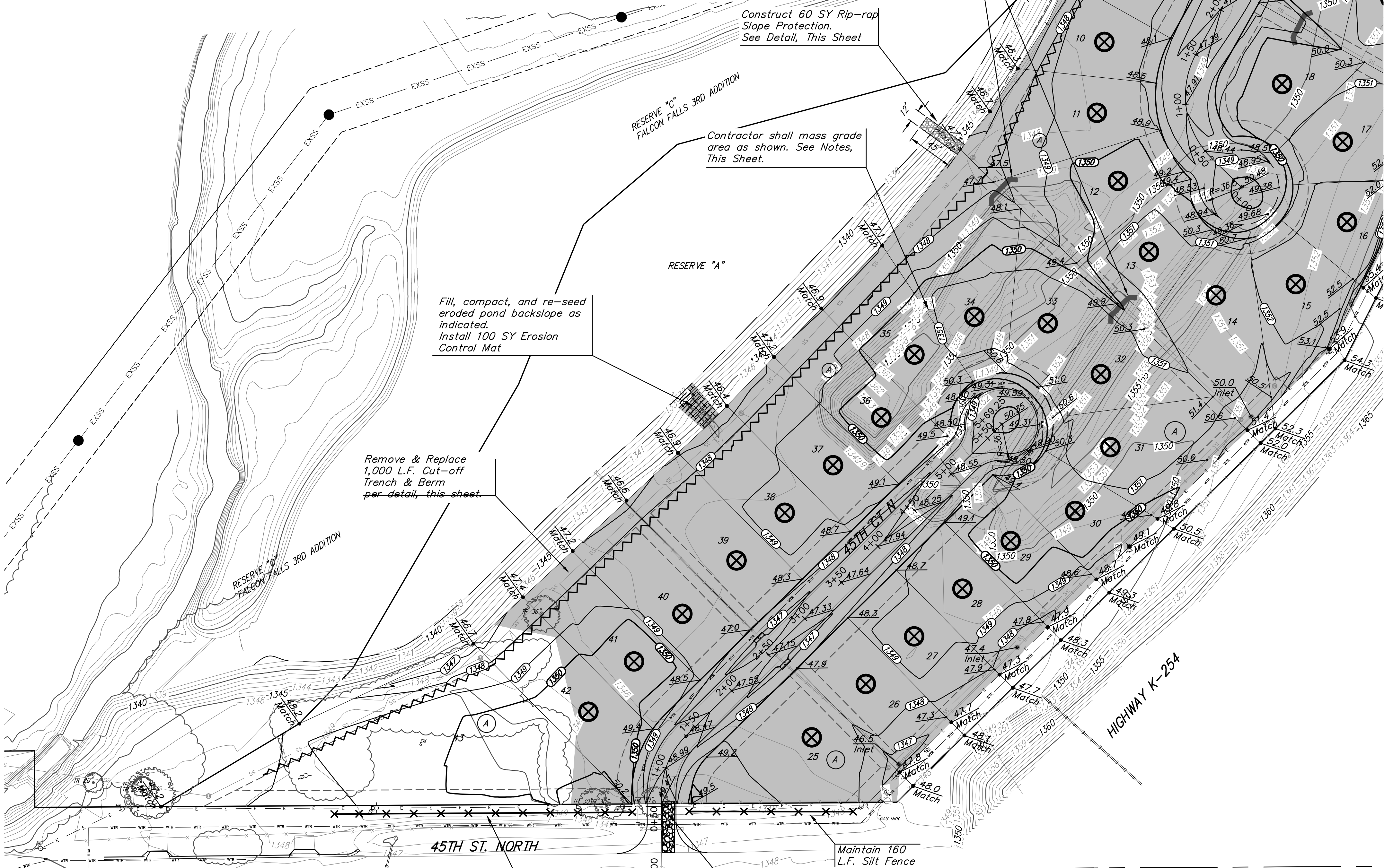
All areas disturbed during construction shall be seeded, mulched, and fertilized as per Cover Sheet General Notes.



MASS GRADING GENERAL NOTES:

Excess material shall remain on-site and be spread evenly on lots out of easements and right-of-ways. Earthwork quantities are unadjusted and are for reference only. All cost associated with mass grading including, but not limited to; lot fill, street fill, mass grading, compaction, and compaction testing shall be incidental to lump sum bid item "Grading, Mass".

- Contractor to strip top 4-6" of soil within street right-of-way and proposed compaction areas. Topsoil may be spread in areas not under proposed pavement and on lots above compaction testing elevation.
- Over-excavation of stockpiles will be required to properly compact existing material for street construction and for building pads. Over-excavation quantities are not included in earthwork totals shown on this sheet. See table on this sheet for required over-excavation elevation.
- Compaction of 95% Std. Proctor Density shall be obtained in all street R/W's and within specified lots up to the plan elevations as shown. Compaction testing shall be performed at one location in each lot and for each foot of compacted fill placed up to the elevation listed on Sheet 3. All compaction test results shall be submitted to the design Engineer along with the completed compaction testing table shown on sheet 3.
- It shall be the Contractor's responsibility to protect existing utilities during mass grading. Any damage done to these systems by Contractor or Subcontractor shall be repaired at no additional cost to the project.
- All areas disturbed by construction shall be seeded per Cover Sheet General Notes.



EROSION CONTROL MEASURE	INSTALL
BACK OF CURB PROTECTION (LF)	0
CONSTRUCTION ENTRANCE (EA)	0
CURB INLET BARRIER (EA)	0
DITCH CHECK (EA)	5
DROP INLET PROTECTION (EA)	0
EROSION CONTROL (LS)	0
EROSION CONTROL BERM (LF)	1,750
SILT FENCE (LF)	360
EROSION CONTROL MAT (SY)	200
MAINTAIN EROSION CONTROL BMP's (LS)	1

* ALL EXISTING BMPs INCLUDING CONSTRUCTION ENTRANCE, SEDIMENT BARRIERS, SILT FENCE, CUT-OFF TRENCH, AND EROSION CONTROL MAT SHALL BE MAINTAINED AND REPAIRED IF NECESSARY.

Maintain 160 L.F. Silt Fence

Maintain 290 L.F. Silt Fence

Maintain 50'x12' Gravel Construction Entrance installed with Water Line Project.



⊗ Compaction Testing Location

Grade points around cul-de-sacs are located at 1' behind back of curb.

Baughman Falcon Falls 6th Addition
 Mass Grading & Erosion Control
 Storm Water Drain Improvements

Baughman Company, P.A. 315 Ellis St. Wichita, KS 67211 P 316-262-7271 F 316-262-0149
 ENGINEERING | SURVEYING | PLANNING | LANDSCAPE ARCHITECTURE

PROJECT NUMBER 468-85186	DESIGN AEG	DRAWN JAK
REVISIONS:	APPROVED	DATE 7/06/15
	SCALE Noted	SHEET

2 OF 11

E:\Projects\Falcon Falls 5th 1402R19\Engineering\Phase 1\SWD_15054232\SWD_PLAN.dwg