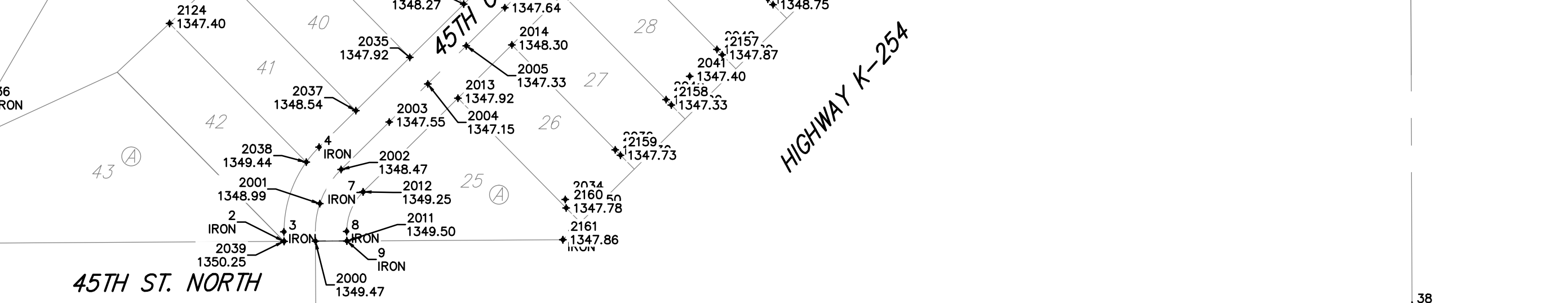
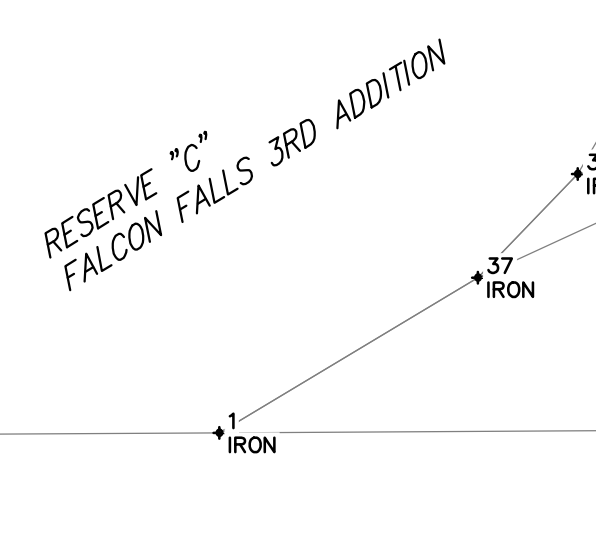


Point Table			
Point #	Northing	Easting	Description
1	5040.89	8533.81	IRON
2	5043.52	8991.86	IRON
3	5052.25	8991.81	IRON
4	5130.47	9024.24	IRON
5	5405.12	9302.55	IRON
6	5363.84	9343.29	IRON
7	5089.19	9064.99	IRON
8	5052.59	9049.81	IRON
9	5043.86	9049.86	IRON
10	5045.01	9249.56	IRON
11	5475.48	9685.40	IRON
12	5769.95	9834.72	IRON
13	5959.11	9930.60	IRON
14	6101.14	9947.88	IRON
15	6104.75	9918.11	IRON
16	6099.91	9882.52	IRON
17	6055.55	9774.85	IRON
18	6007.64	9709.24	IRON
19	5987.30	9745.40	IRON
20	5900.15	9696.37	IRON
21	5921.96	9657.59	IRON
22	6236.94	9964.40	IRON
23	5760.49	9566.75	IRON
24	5692.96	9576.37	IRON
25	5651.54	9535.77	IRON
26	5788.93	9516.20	IRON
27	6252.93	9832.48	IRON
28	6009.72	9640.41	IRON
29	6109.17	9752.75	IRON
30	6162.33	9925.09	IRON
31	6158.71	9954.88	IRON
32	6279.05	9969.52	IRON
33	6959.40	9967.08	IRON
34	6959.20	9908.05	IRON
35	6726.36	9790.93	IRON
36	5175.71	8720.54	IRON
37	5121.73	8668.46	IRON
38	4984.65	10034.16	SEC COR
39	7621.27	10024.71	SEC COR
40	4969.33	7411.52	SEC COR
100	5367.11	8956.32	0+00
107	5019.29	9000.00	End Sec
108	5019.54	9042.00	End Sec

Point Table			
Point #	Northing	Easting	Elevation
2000	5043.69	9020.86	1349.47
2001	5078.28	9024.95	1348.99
2002	5109.83	9044.61	1348.47
2003	5153.72	9089.09	1347.55
2004	5188.84	9124.68	1347.15
2005	5223.96	9160.26	1347.33
2006	5259.08	9195.85	1347.64
2007	5294.20	9231.44	1347.94
2008	5329.33	9267.03	1348.25
2009	5364.45	9302.62	1348.55
2010	5413.09	9351.91	1350.35
2011	5043.86	9049.86	1349.50
2012	5089.19	9064.99	1349.25
2013	5175.59	9152.54	1347.92
2014	5224.76	9202.36	1348.30
2015	5271.12	9249.31	1348.70
2016	5317.48	9296.31	1349.10
2017	5363.84	9343.29	1349.42
2018	5376.60	9351.30	1348.50
2019	5387.15	9394.65	1350.28
2020	5387.11	9377.55	1348.90
2021	5419.60	9401.48	1350.63
2022	5412.85	9388.41	1349.31
2023	5438.73	9377.89	1349.59
2024	5449.18	9386.51	1350.84
2025	5449.59	9352.15	1349.31
2026	5462.90	9356.32	1350.59
2027	5454.66	9324.13	1350.25
2028	5439.07	9326.27	1348.90
2029	5412.97	9315.41	1348.50
2030	5401.52	9298.90	1349.48
2031	5355.16	9251.92	1349.07
2032	5308.80	9204.94	1348.67
2033	5262.44	9157.97	1348.27
2034	5082.24	9251.69	1346.50
2035	5213.27	9108.14	1347.92
2036	5127.92	9297.93	1347.30
2037	5164.10	9058.32	1348.54
2038	5116.66	9012.41	1349.44
2039	5043.52	8991.86	1350.25
2040	5174.30	9344.89	1347.90
2041	5195.91	9366.77	1347.40
2042	5220.67	9391.85	1347.80
2043	5267.05	9438.80	1348.60
2044	5324.84	9497.31	1349.40
2045	5378.54	9551.68	1350.60
2046	5419.26	9578.68	1350.60
2047	5440.06	9557.43	1351.40
2048	5505.71	9490.32	1350.30
2049	5530.75	9464.72	1349.90
2050	5570.06	9424.54	1349.40
2051	5622.93	9370.51	1348.10
2052	5648.97	9343.89	1347.70
2053	5662.90	9329.66	1347.50
2054	5439.82	9613.85	1350.50

Point Table			
Point #	Northing	Easting	Elevation
2055	5487.42	9669.04	1353.10
2056	5525.40	9680.49	1352.50
2057	5554.52	9693.43	1352.50
2058	5651.42	9731.14	1352.00
2059	5677.43	9737.67	1352.00
2060	5730.23	9767.49	1351.50
2061	5765.51	9704.78	1350.30
2062	5778.26	9682.11	1350.00
2063	5823.28	9602.07	1347.74
2064	5841.91	9546.01	1347.75
2065	5863.29	9558.03	1347.78
2066	5851.72	9551.52	1346.90
2067	5761.76	9794.69	1355.26
2068	5780.19	9787.21	1351.50
2069	5845.89	9838.51	1352.50
2070	5868.14	9848.61	1353.00
2071	5888.79	9869.02	1352.50
2072	5594.23	9592.12	1350.69
2073	5607.24	9585.04	1349.36
2074	5602.53	9556.84	1350.28
2075	5618.01	9559.27	1348.94
2076	5617.85	9610.88	1349.68
2077	5643.63	9621.66	1349.38
2078	5643.74	9585.16	1350.48
2079	5669.47	9611.05	1348.95
2080	5680.24	9585.14	1348.51
2081	5679.09	9549.81	1348.44
2082	5642.98	9548.57	1348.53
2083	5658.99	9528.82	1349.23
2084	5651.54	9535.77	1349.41
2085	5699.30	9506.64	1348.89
2086	5724.62	9530.96	1347.91
2087	5745.10	9502.19	1348.53
2088	5788.93	9516.20	1348.15
2089	5772.97	9540.52	1347.39
2090	5816.56	9565.02	1347.02
2091	5838.08	9577.12	1346.97
2092	5860.14	9589.53	1347.09
2093	5903.71	9614.05	1347.44
2094	5914.47	9586.83	1348.19
2095	5921.96	9657.59	1348.65
2096	5947.29	9638.56	1347.77
2097	5911.91	9702.99	1348.44
2098	5908.57	9730.72	1349.02
2099	5943.72	9720.89	1350.23
2100	5925.83	9752.70	1349.43
2101	5918.26	9763.92	1350.68
2102	5895.04	9709.48	1349.87
2103	5897.39	9739.68	1350.37
2104	5950.79	9770.38	1350.37
2105	5953.56	9756.03	1349.03
2106	5975.53	9738.78	1348.44
2107	6007.64	9709.24	1348.97
2108	5972.00	9619.19	1348.62
2109	5990.87	9663.08	1348.07

Point Table			
Point #	Northing	Easting	Elevation
2110	6024.95	9649.51	1349.00
2111	6063.52	9682.33	1349.23
2112	6031.69	9691.74	1348.37
2113	6064.19	9729.56	1348.64
2114	6094.39	9723.15	1349.47
2115	6117.93	9774.01	1349.74
2116	6086.62	9774.14	1348.90
2117	6105.67	9820.37	1349.17
2118	6141.93	9832.26	1350.08
2119	6124.72	9866.60	1349.44
2120	6134.12	9915.21	1349.74
2121	6158.71	9954.88	1350.75
2122	6129.93	9951.38	1349.97
2123	6101.14	9947.88	1350.75
2124	6244.62	8886.12	1347.40
2125	6289.67	8934.40	1347.20
2126	6338.87	8986.74	1346.63
2127	6385.21	9036.81	1346.86
2128	6430.99	9084.36	1346.36
2129	6478.41	9130.29	1347.17
2130	6525.83	9176.22	1346.91
2131	6587.15	9235.60	1347.14
2132	6681.15	9311.00	1347.14
2133	6717.72	9340.33	1346.73
2134	6759.46	9367.56	1346.27
2135	6845.54	9415.55	1346.19
2136	6911.21	9445.78	1345.33
2137	6976.83	9475.98	1347.40
2138	6034.75	9507.63	1347.15
2139	6095.85	9542.00	1347.46
2140	6165.73	9585.30	1346.48
2141	6203.63	9658.35	1346.69
2142	6224.00	9730.30	1346.71
2143	6241.28	9791.32	1346.39
2144	6252.93	9832.48	1346.66
2145	6236.94	9964.40	1347.35
2146	5973.91	9932.40	1352.77
2147	5959.11	9930.60	1354.41
2148	5892.22	9896.70	1355.07
2149	5851.81	9876.21	1357.33
2150	5827.42	9844.84	1357.92
2151	5747.02	9800.67	1358.59
2152	5717.12	9790.79	1359.15
2153	5655.41	9756.81	1357.92
2154	5546.03	9703.72	1355.38
2155	5407.36	9590.85	1351.42
2156	5262.05	9443.74	1348.75
2157	5215.71	9396.75	1347.87
2158	5169.37	9349.76	1347.33
2159	5123.02	9302.76	1347.73
2160	5074.27	9252.52	1347.78
2161	5045.01	9249.56	1347.86



Baugham

Falcon Falls 6th Addition
COORDINATES
Storm Water Drain Improvements

Baugham Company, P.A. 315 Ellis St. Wichita, KS 67211 P 316-262-7271 F 316-262-0149
ENGINEERING | SURVEYING | PLANNING | LANDSCAPE ARCHITECTURE

PROJECT NUMBER
468-85186

DESIGN
AEG

DRAWN
JAK

REVISIONS:

APPROVED
DATE
7/06/15

SCALE
Noted

10 OF 11