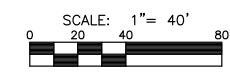





SANTITARY SEWER PLANS FOR
FOX RIDGE PLAZA ADDITION

©2015
MKEC Engineering
All Rights Reserved
www.mkec.com
These drawings and their contents, including, but not limited to, all concepts, designs, & ideas are the exclusive property of MKEC Engineering (MKEC), and may not be used or reproduced in any way without the express consent of MKEC.

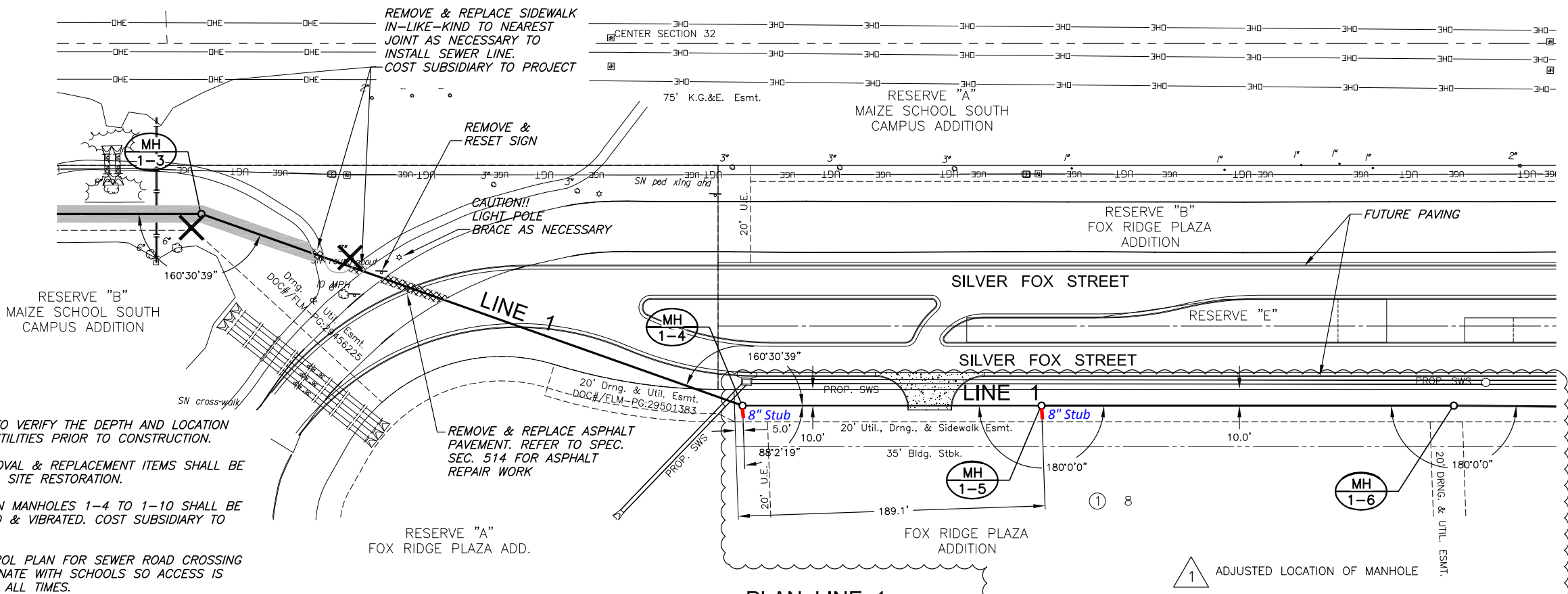
LINE 1		
PROJECT NO.	468-84951	
DATE	DEC. 2014	
SCALE	AS SHOWN	
DESIGNED	DRAWN	CHECKED
DFL	KKL	GJA
NO.	REVISION	DATE
SHEET NO.		
6 OF 16		



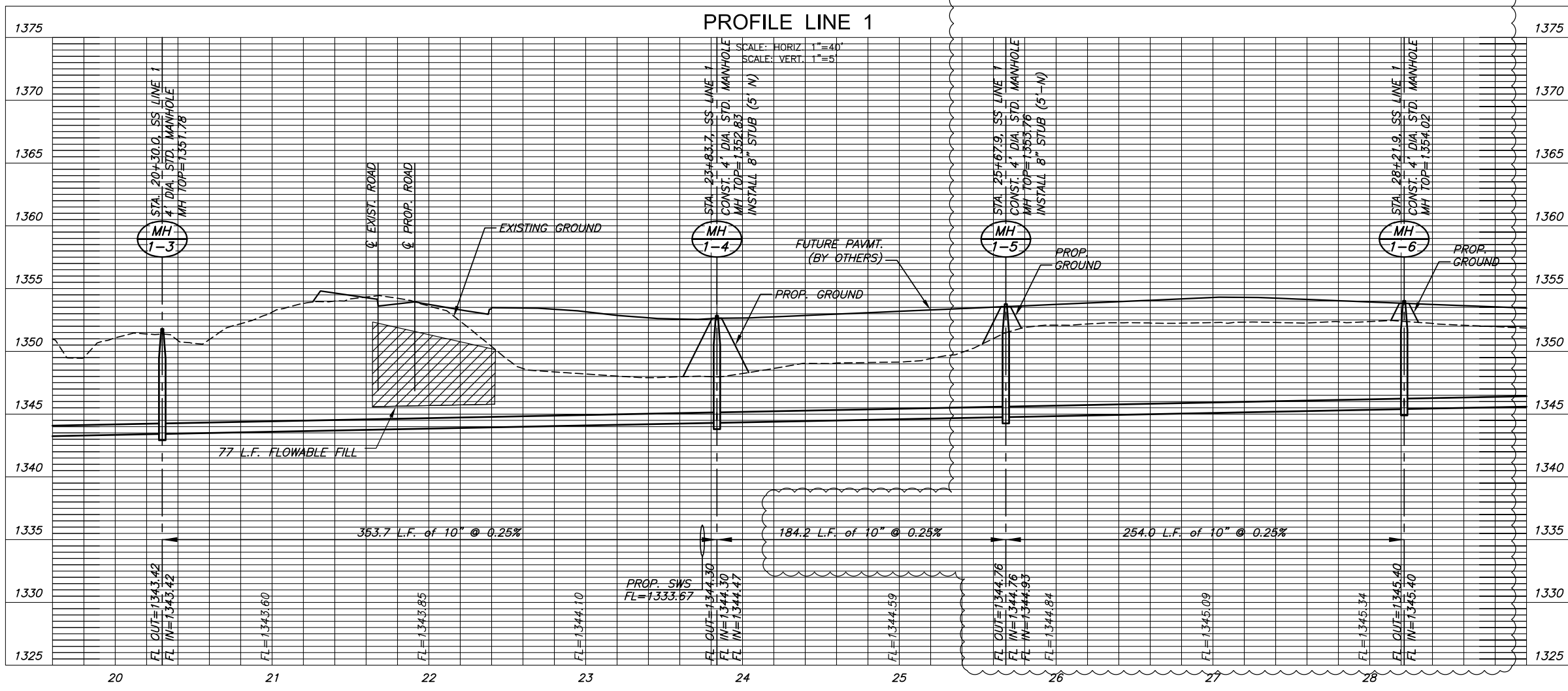
LEGEND

-  REMOVE & REPLACE
-  TOPSOIL STRIPPED & REPLACED
-  TREE REMOVAL

- NOTE:**
- CONTRACTOR TO VERIFY THE DEPTH AND LOCATION OF EXISTING UTILITIES PRIOR TO CONSTRUCTION.
 - COST OF REMOVAL & REPLACEMENT ITEMS SHALL BE SUBSIDIARY TO SITE RESTORATION.
 - LINES BETWEEN MANHOLES 1-4 TO 1-10 SHALL BE SAND FLUSHED & VIBRATED. COST SUBSIDIARY TO PROJECT.
 - TRAFFIC CONTROL PLAN FOR SEWER ROAD CROSSING SHALL COORDINATE WITH SCHOOLS SO ACCESS IS MAINTAINED AT ALL TIMES.



**PLAN LINE 1
PROFILE LINE 1**



J:\PROJECTS\2011\101005677 PREMIER FOX RIDGE PLAZA\AS-CIVIL\CAD\SSAN1157_B2.DWG