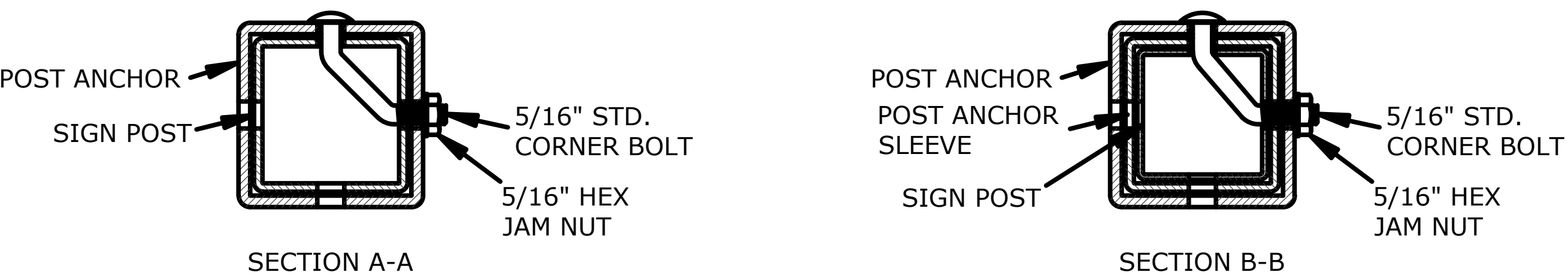
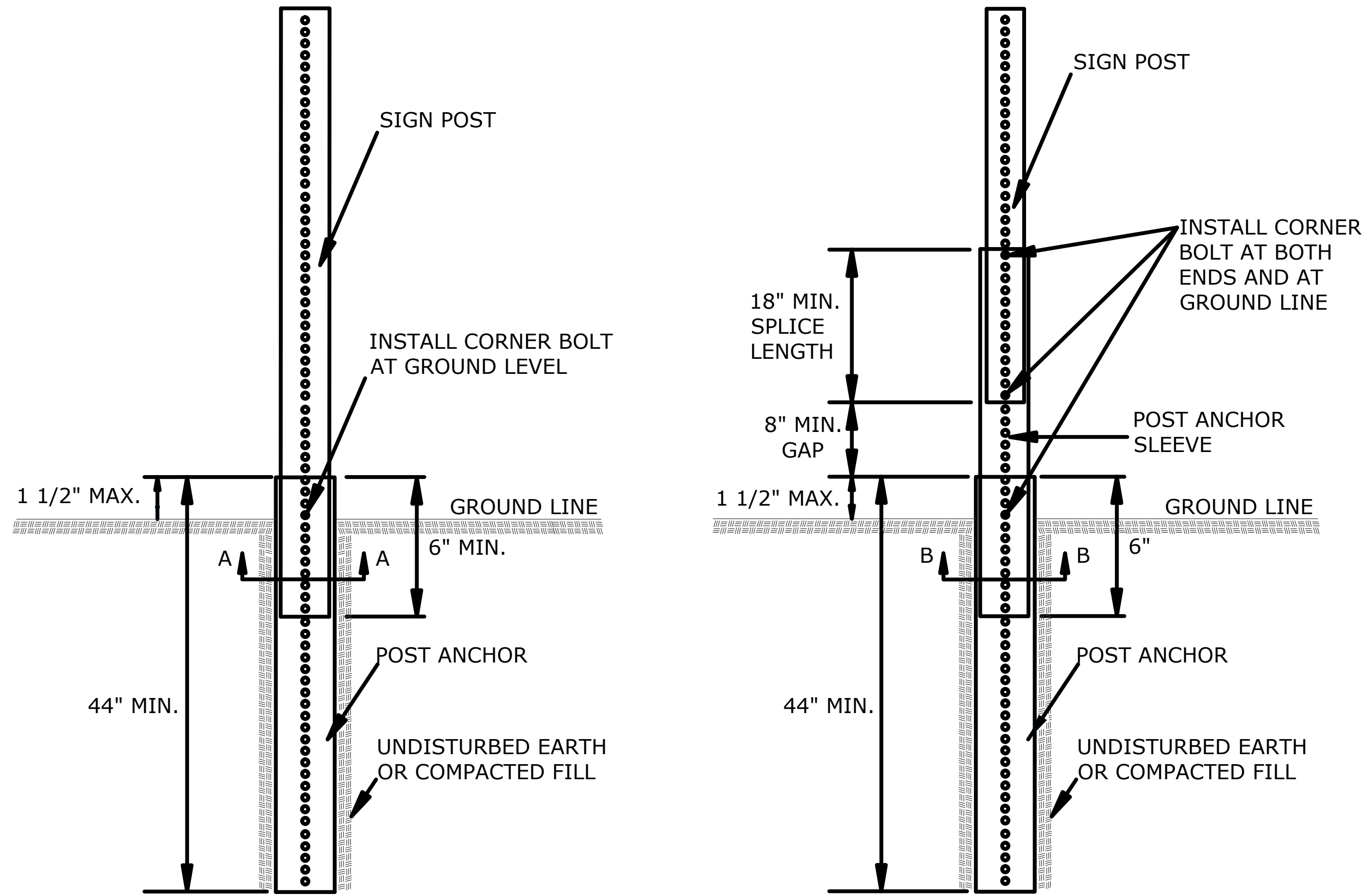
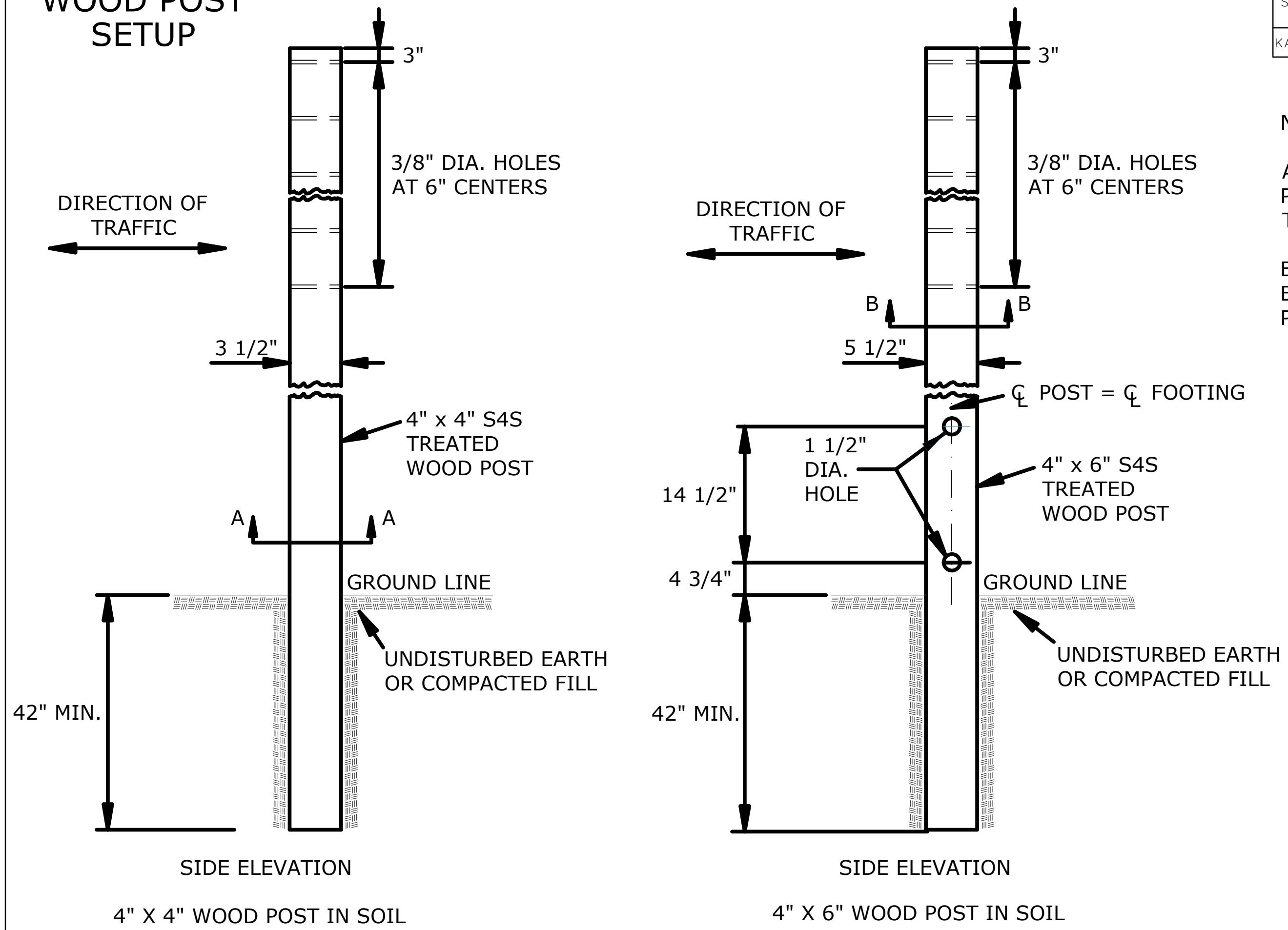


# PERFORATED SQUARE STEEL TUBE (P.S.S.T.) POST SETUP



DETAILS FOR 2", 2 1/4", OR 2 1/2" SIGN POST  
PLACE BOLTS IN THE SAME CORNER ALONG EACH SIGN POST.

# WOOD POST SETUP



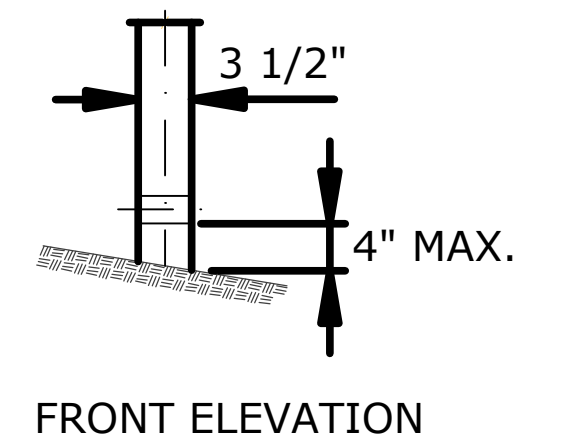
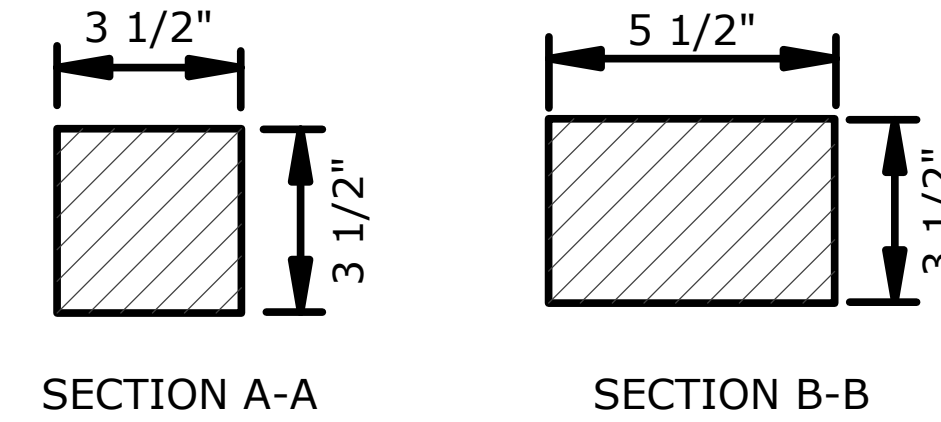
STATE	PROJECT NO.	YEAR	SHEET NO.	TOTAL SHEETS
KANSAS	87 TE-0397-01	2014	TC703	

F.A. TEA-T039(701)  
C.O.W. 472-85109

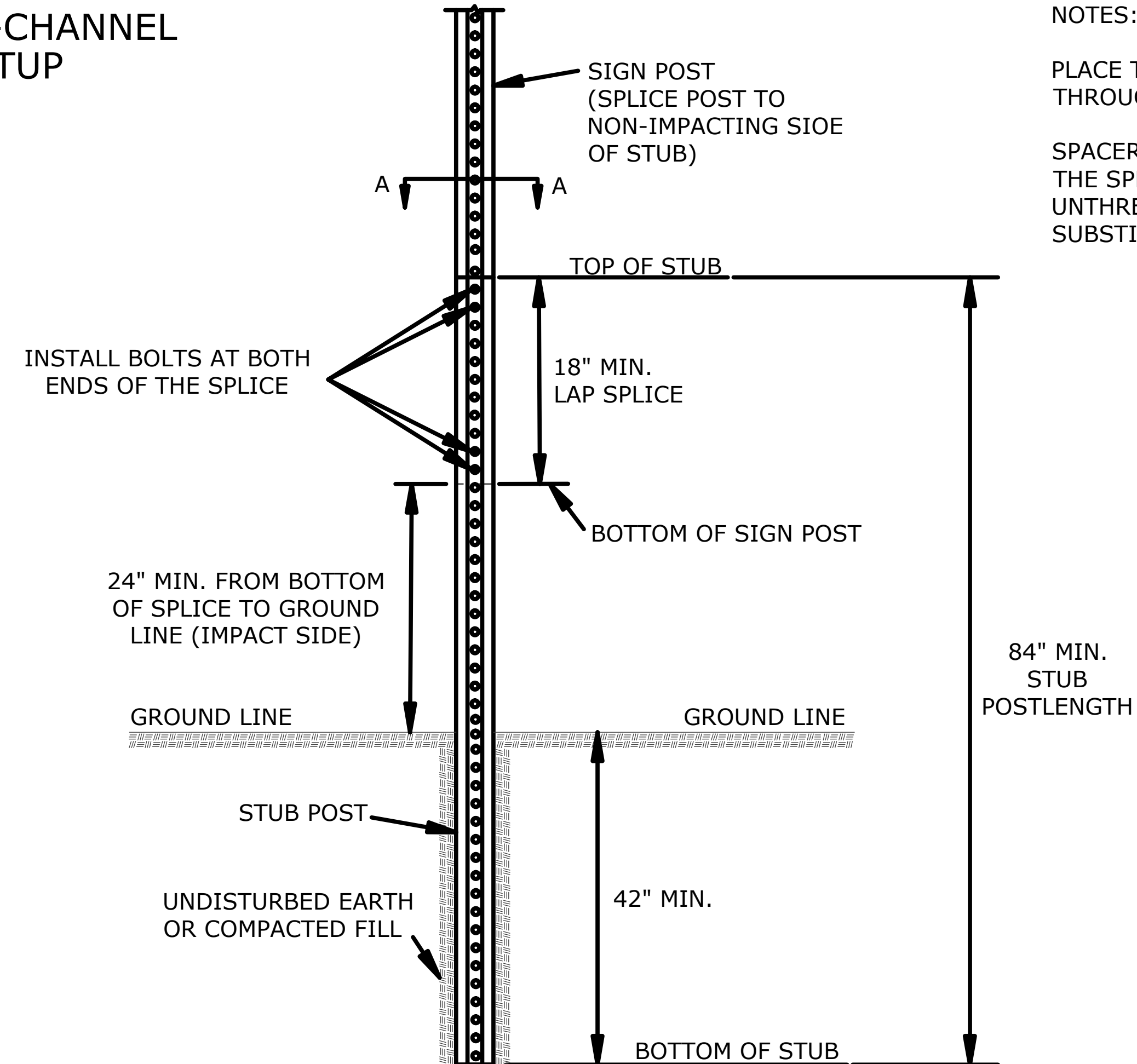
### NOTES:

ALL SIGN MOUNTING HOLES IN THE WOOD POSTS SHALL BE DRILLED PRIOR TO TREATING.

BREAKAWAY HOLES AND FIELD CUTS SHALL BE TREATED IN ACCORDANCE WITH THE PRESERVATIVE TREATMENT SPECIFICATIONS.



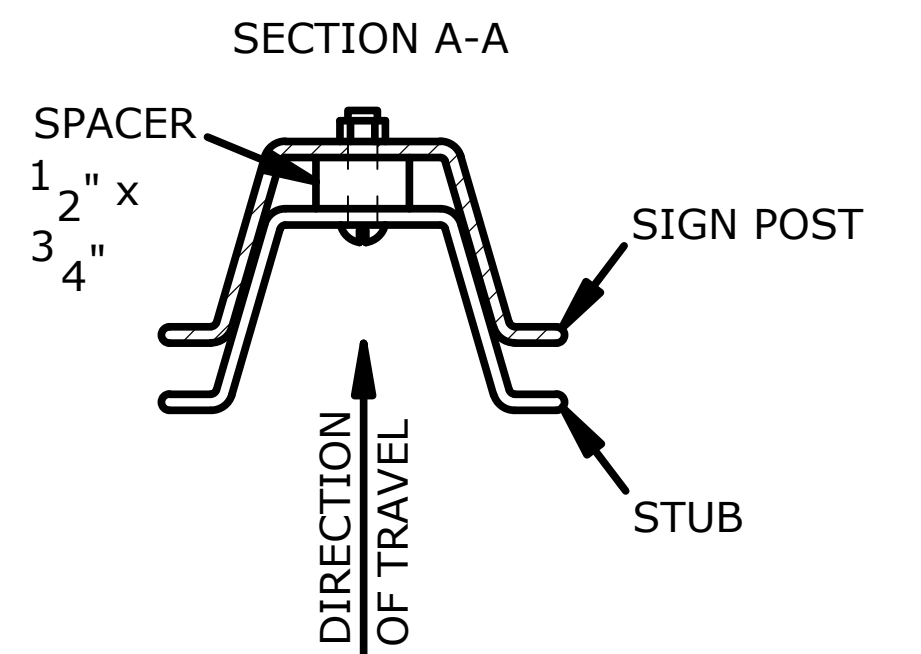
# 3 LB/F U-CHANNEL SETUP



### NOTES:

PLACE TWO BOLTS AT BOTH ENDS OF THE SPLICE THROUGH THE HOLES NEAREST THE ENDS OF THE SPLICE.

SPACERS WILL BE USED OVER THE BOLTS BETWEEN THE SPLICED PIECES OF U-CHANNEL. THREADED OR UNTHREADED SPACERS MAY BE USED. DO NOT SUBSTITUTE PIPE OR OTHER "ITEMS" FOR THE SPACERS.



3	10/10/12	Added Spacer Dimension, Removed PEST Note	JAM	K.P.
2	10/4/11	Removed Washer On PEST Detail	JAM	K.P.
1	6/1/10	Modified Post Anchor Sleeve Dimension	JAM	AAA
NO.	DATE	REVISIONS	BY	APP'D

KANSAS DEPARTMENT OF TRANSPORTATION

**APPROVED TEMPORARY POST SETUPS**

**TE712**

DESIGNED BY: JAM  
CHECKED BY: JAM  
DATE: 10/10/12

QUANTITIES TRACKED BY: JAM  
TRACKED BY: JAM

KDOT Graphics Certified 10-23-2012 SHT. NO. TC703