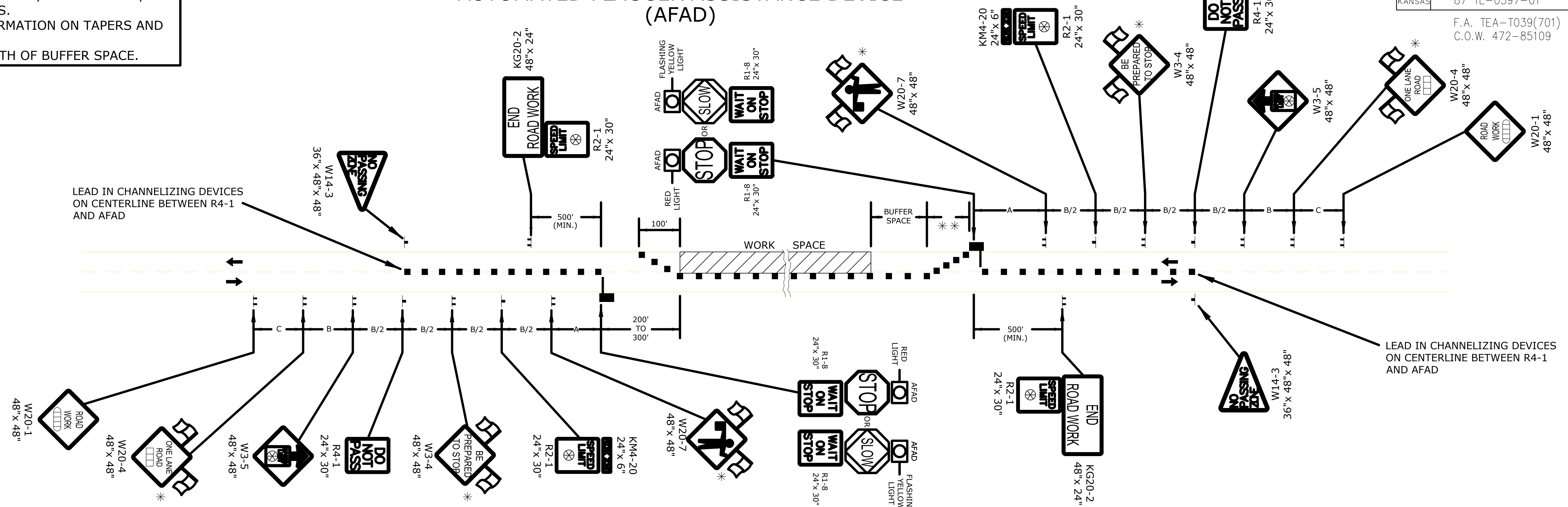


REFER TO STD. TE710 FOR ADDITIONAL INFORMATION ON TEMPORARY TRAFFIC CONTROL SIGNS, SIGN SPACING, CONFLICTING SIGNS AND AFAD'S. REFER TO STD. TE702 FOR INFORMATION ON TAPERS AND CHANNELIZING DEVICES. REFER TO STD. TE700 FOR LENGTH OF BUFFER SPACE.

STATE	PROJECT NO.	YEAR	SHEET NO.	TOTAL SHEETS
KANSAS	87 TE-0397-01	2014	TC705	

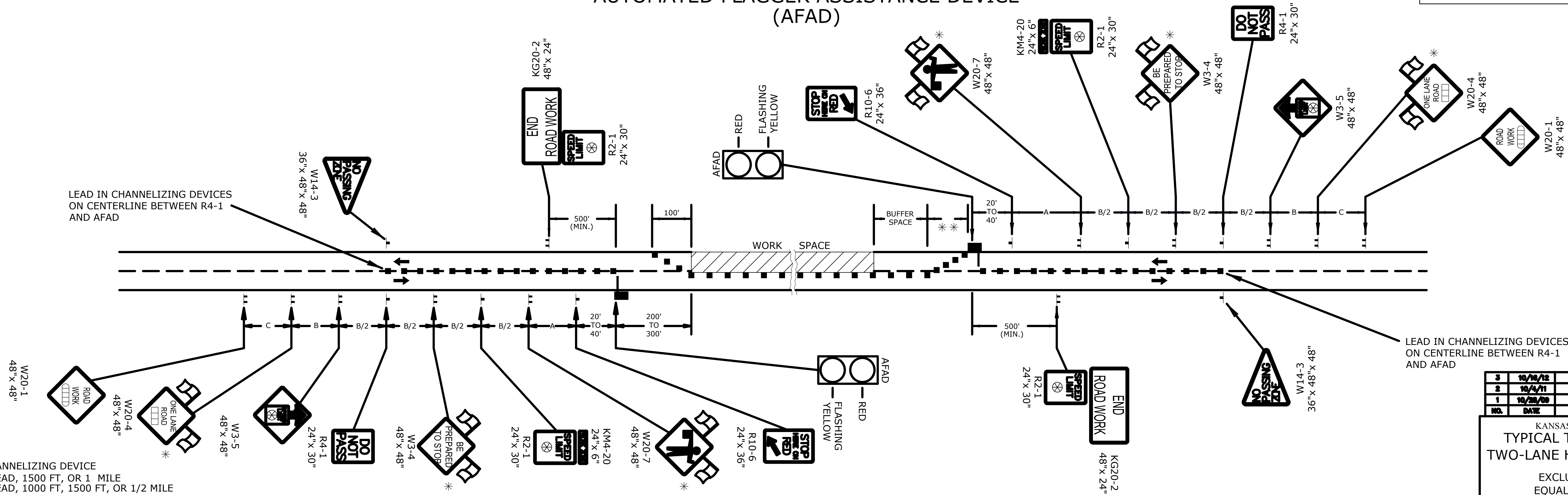
F.A. TEA-T039(701)
C.O.W. 472-85109

STOP/SLOW PADDLE AUTOMATED FLAGGER ASSISTANCE DEVICE (AFAD)



* WHEN APPLICABLE, USE TYPE "A" LOW INTENSITY WARNING LIGHTS AS DIRECTED BY ENGINEER.
** THERE SHOULD BE A MINIMUM OF SIX (6) CHANNELIZERS SPACED AT 20' INTERVALS.

RED/YELLOW LENS AUTOMATED FLAGGER ASSISTANCE DEVICE (AFAD)



- CHANNELIZING DEVICE
- AHEAD, 1500 FT, OR 1 MILE
- AHEAD, 1000 FT, 1500 FT, OR 1/2 MILE
- ⊗ SPEED TO BE DETERMINED BY THE ENGINEER
- TYPE "A" LOW INTENSITY WARNING LIGHT
- AFAD

NO.	DATE	REVISIONS	BY	APPD
3	10/16/12	Modified Lead in Channelizer Hole	JAM	K.P.
2	10/4/11	Removed Conflicting Sign Hole	JAM	K.P.
1	10/28/09	Added R1-8 Identification	JAM	A.A.A.

KANSAS DEPARTMENT OF TRANSPORTATION
TYPICAL TRAFFIC CONTROL A.F.A.D.
TWO-LANE HIGHWAY ONE LANE CLOSED
EXCLUDING CONCRETE SHOULDERS
EQUAL TO OR GREATER THAN 8 FT

TE728

DESIGNED BY	10/16/12/APPD	DATE	10/16/12
DRAWN BY	10/16/12	CHECKED BY	10/16/12
IN CHARGE	10/16/12	APPROVED BY	10/16/12