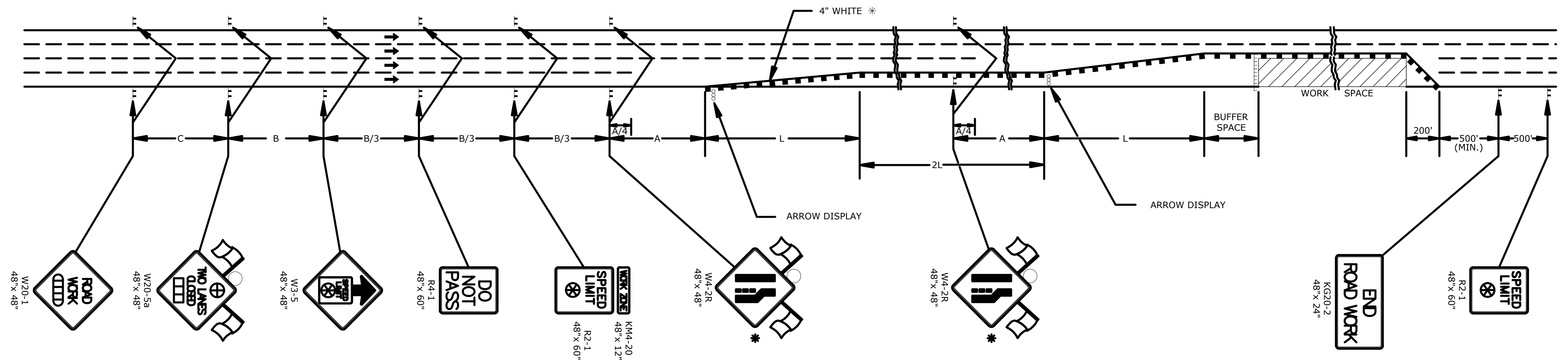


STATE	PROJECT NO.	YEAR	SHEET NO.	TOTAL SHEETS
KANSAS	87 TE-0397-01	2014	TC707	

F.A. TEA-T039(701)
C.O.W. 472-85109

REFER TO STD. TE710 FOR ADDITIONAL INFORMATION ON TEMPORARY TRAFFIC CONTROL SIGNS AND SIGN SPACING.
REFER TO STD. TE704 FOR TYPE III BARRICADES.
REFER TO STD. TE702 FOR INFORMATION ON TAPERS AND CHANNELIZING DEVICES.
REFER TO STD. TE700 FOR LENGTH OF BUFFER SPACE.



* FOR LEFT LANE CLOSURES USE W4-2L AND YELLOW EDGE LINE ALONG CHANNELIZING DEVICES.

- ▬ TYPE III BARRICADES
- CHANNELIZING DEVICE
- ▭ AHEAD, 1500 FT, OR 1 MILE
- ▭ AHEAD, 1000 FT, 1500 FT, OR 1/2 MILE
- ⊕ RIGHT OR LEFT
- ⊗ SPEED TO BE DETERMINED BY THE ENGINEER
- TYPE "A" LOW INTENSITY WARNING LIGHT

3	10/4/11	Modified Pavement Marking Dimensions	J.A.M.	K.P.
2	8/6/07	Sign Spacing Change	M.B.	A.A.A.
1	12/28/06	W4-20 Changed to W4-2R	M.B.	A.A.A.
NO.	DATE	REVISIONS	BY	APP'D

KANSAS DEPARTMENT OF TRANSPORTATION
TYPICAL TRAFFIC CONTROL
MULTI-LANE HIGHWAY
TWO LANES CLOSED

TE746

DESIGN	DRAWN	CHECKED	IN CHARGE
DATE	DATE	DATE	DATE

KDOT Graphics Certified 10-23-2012 SHT. NO. TC707