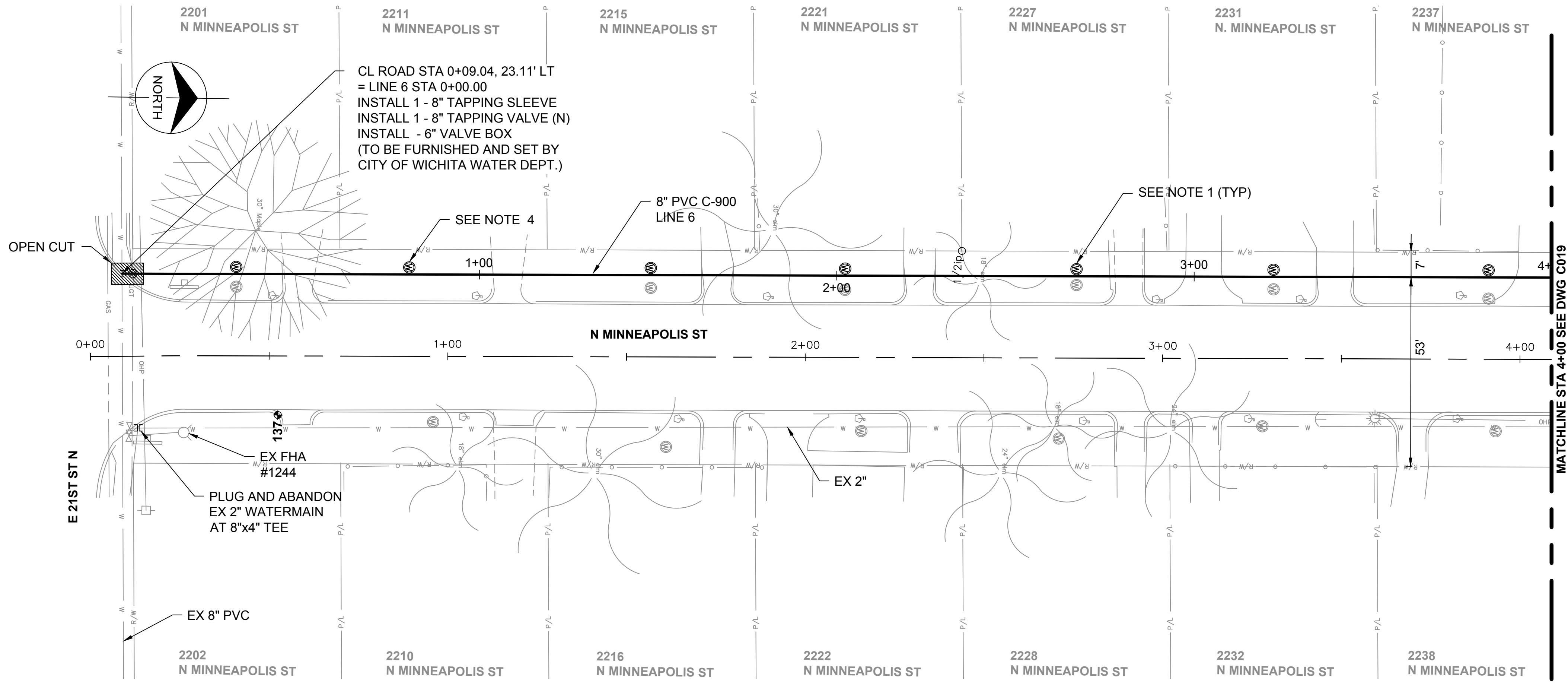
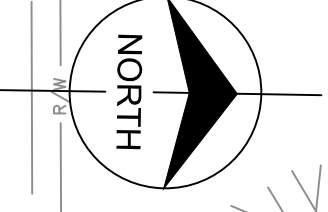


1 2 3 4 5 6 7 8 9 10 11 12 13

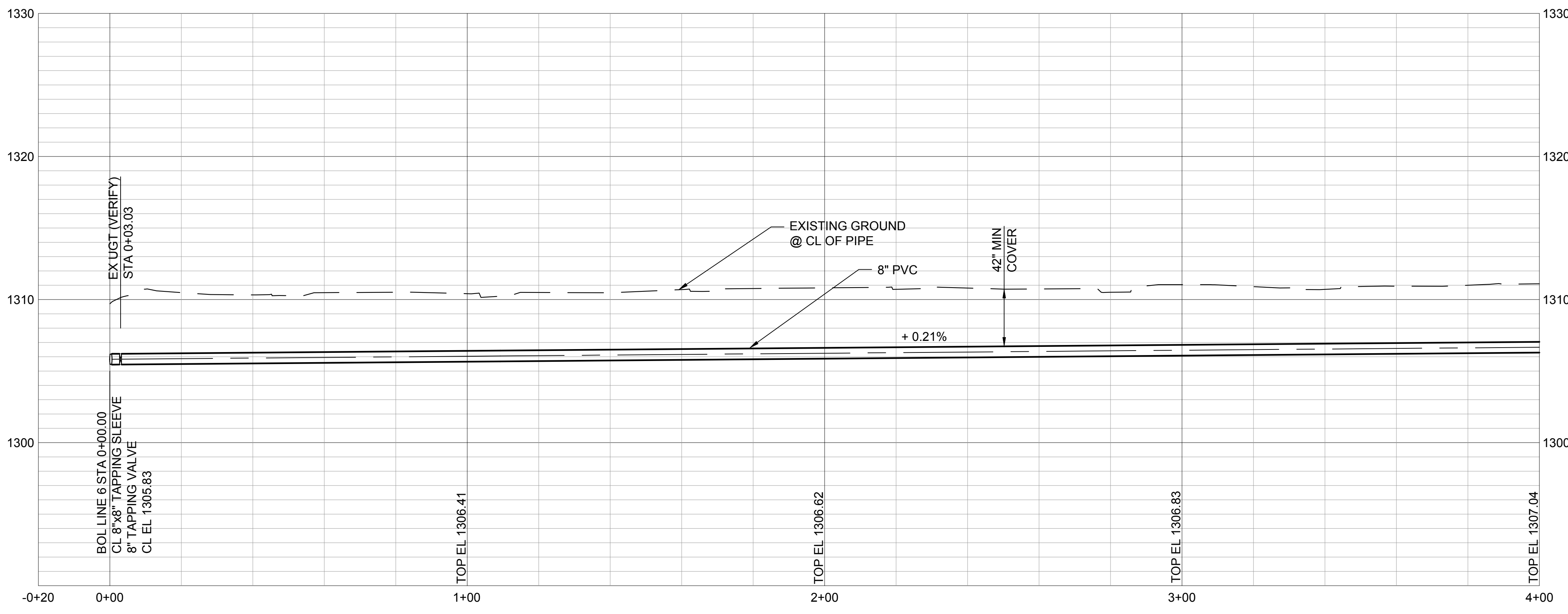


CL ROAD STA 0+09.04, 23.11' LT
= LINE 6 STA 0+00.00
INSTALL 1 - 8" TAPPING SLEEVE
INSTALL 1 - 8" TAPPING VALVE (N)
INSTALL - 6" VALVE BOX
(TO BE FURNISHED AND SET BY
CITY OF WICHITA WATER DEPT.)



Millimeters
Scale For Microfitting

Inches



no.	date	by	ckd	description

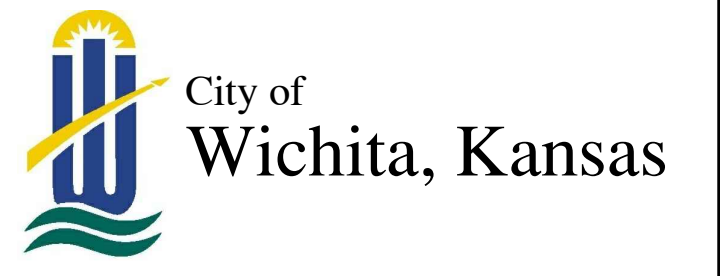


- NOTE:**
1. REFER TO THE WATER SERVICE TRANSFER TABLES, DRAWINGS C092 - C093 FOR METER RELOCATES.
 2. INSTALL WATERMAIN BY DIRECTIONAL DRILLING UNLESS OTHERWISE NOTED.
 3. FOR SANITARY SEWER CROSSINGS LESS THAN 24" VERTICAL CLEARANCE FROM WATERMAIN, REBUILD SANITARY SEWER PER SPECIFICATION 803.4a.
 4. CONTRACTOR SHALL VERIFY METER LOCATION NOT PICKED UP BY SURVEY.



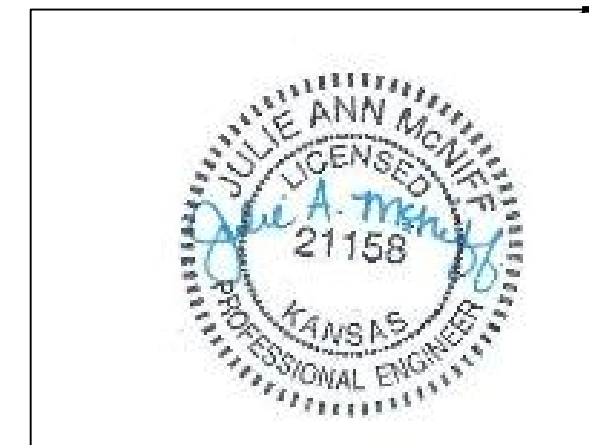
9400 WARD PARKWAY
KANSAS CITY, MO 64114
816-333-9400
LICENSEE NO. 000165

date	APRIL 24, 2014	detailed	M. CHARRETTE
designed	J. MCNIFF	checked	S. WILSON



**ETHEL NEIGHBORHOOD
WATER MAIN REPLACEMENT
LINE 6 - N MINNEAPOLIS STREET**

project	77025	contract	448-90612
drawing	rev. C018 - 0		
sheet	25	of	101 sheets
file	LINE 6.dwg		



This document has been digitally signed.
05/08/15 9:43 AM

Name
Discipline
License No.

J:\WCHIT\77025 - Ethel\WMRCADD\06_Civil\LINE 6.dwg May 07, 2015 - 2:24pm mcharrette
COPYRIGHT © 2015 BURNS & MCDONNELL ENGINEERING COMPANY, INC.