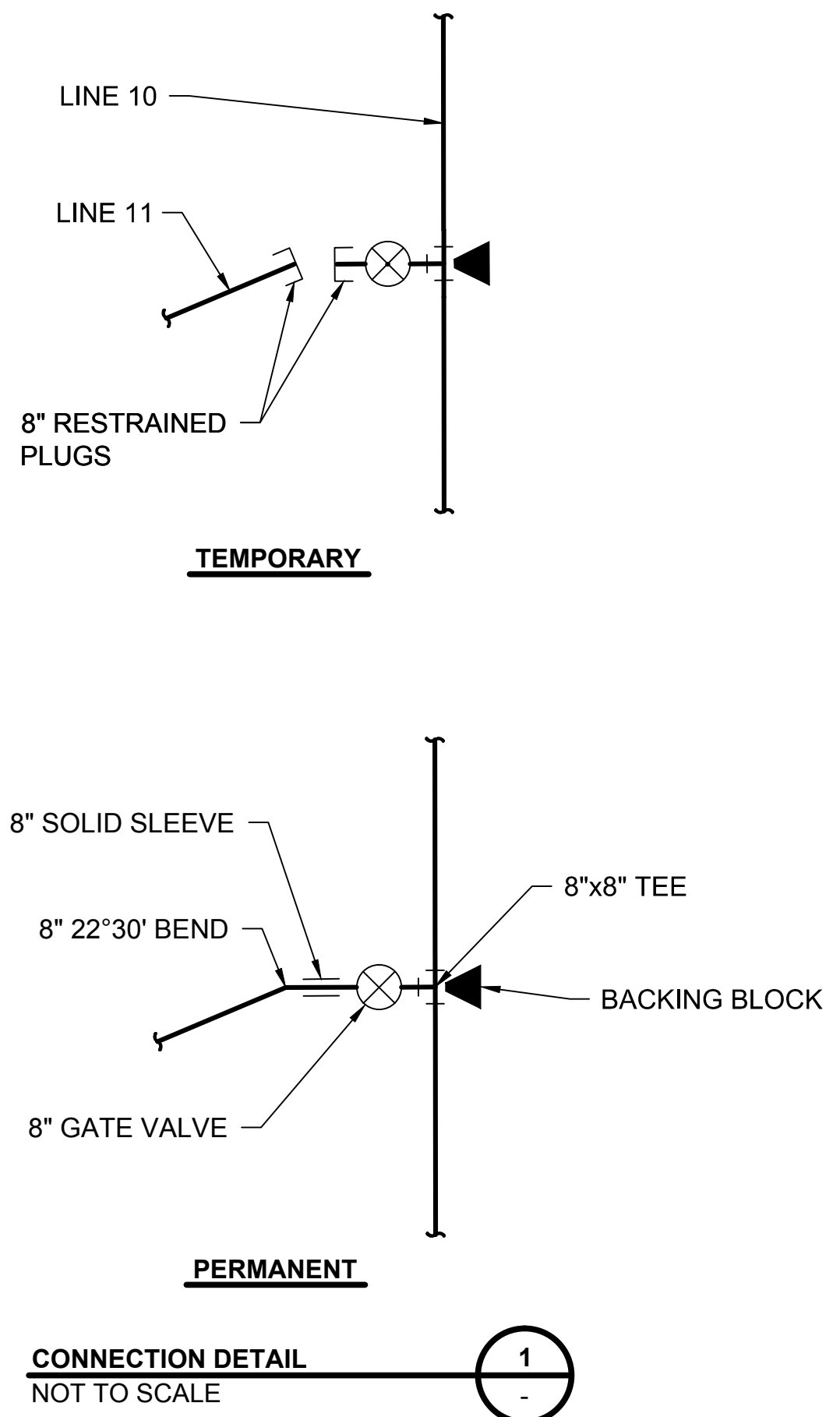


CL ROAD STA 0+36.07, 17.27' LT
 = LINE 11 STA 0+00.00
 INSTALL 1 - 6" TAPPING SLEEVE
 INSTALL 1 - 6" TAPPING VALVE (E)
 INSTALL 1 - 8"x6" REDUCER
 INSTALL 1 - 6" VALVE BOX
 (TO BE FURNISHED AND SET BY
 CITY OF WICHITA WATER DEPT.)

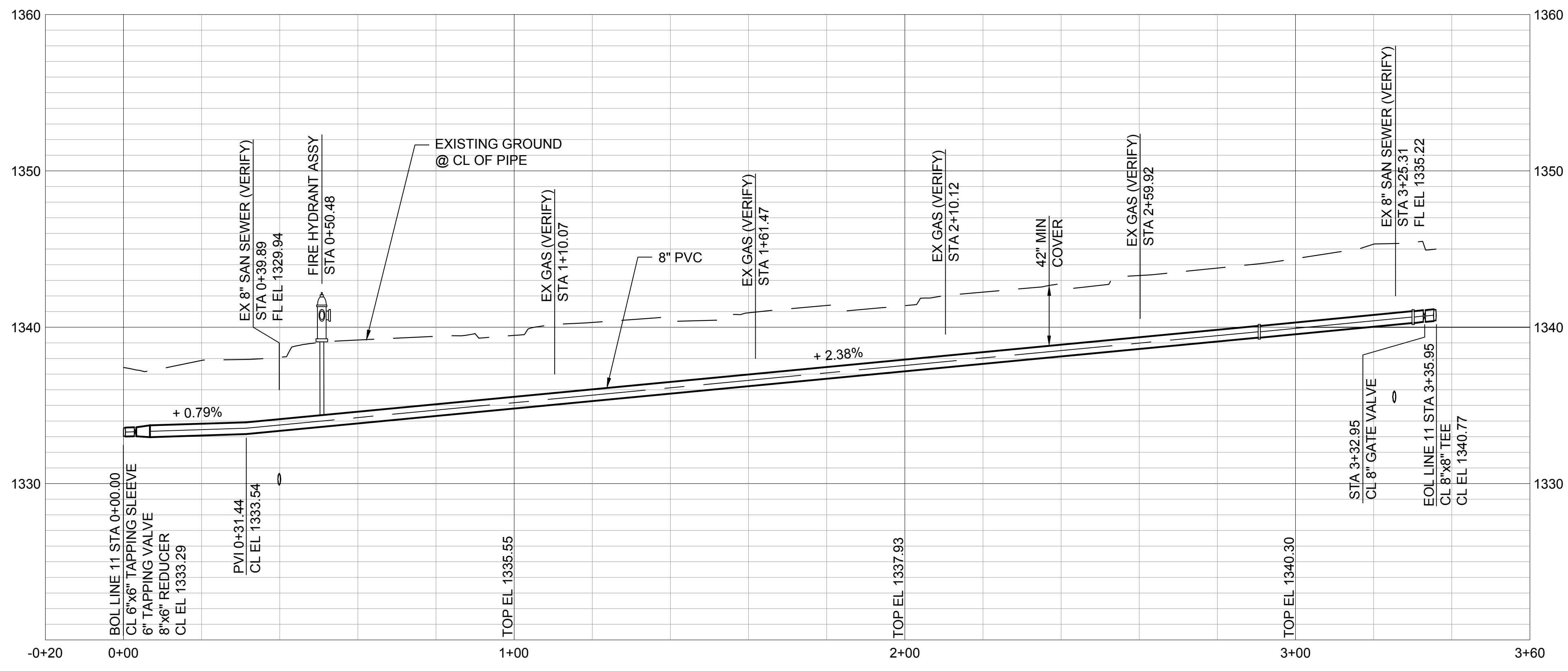
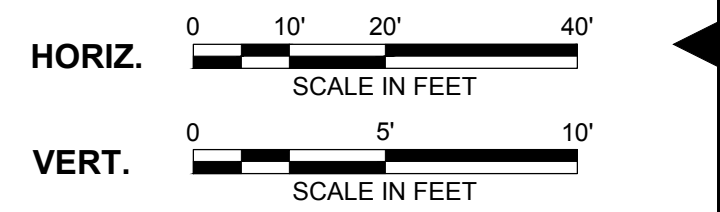
PLUG AND ABANDON EX 2" MAIN AND
 2 - EX 1" TAPS LOCATED 59' S OF SCL
 OF AUDRY AND 4' W OF WCL VOLUTSIA

CL ROAD STA 3+69.28, 32.33' LT
 = EOL LINE 11 STA 3+35.95
 = WL 10 STA 4+44.58
 CONNECT TO LINE 10
 CL ROAD STA 3+63.31, 32.35' LT
 = LINE 11 STA 3+30.09
 INSTALL 1 - 8" 22°30' BEND
 WITH BACKING BLOCK
 CL ROAD STA 3+26.86, 17.41' LT
 = LINE 11 STA 2+90.71
 INSTALL 1 - 8" 22°30' BEND
 WITH BACKING BLOCK



CONNECTION DETAIL
 NOT TO SCALE

no.	date	by	ckd	description
-----	------	----	-----	-------------



Burns & McDonnell
 SINCE 1898
 9400 WARD PARKWAY
 KANSAS CITY, MO 64114
 816-333-9400
 LICENSEE NO. 000165

date APRIL 24, 2014	detailed M. CHARRETTE
designed J. MCNIFF	checked S. WILSON



**ETHEL NEIGHBORHOOD
 WATER MAIN REPLACEMENT
 LINE 11 - E 22ND STREET N
 (VOLUTSIA TO ERIE)**

project 77025	contract 448-90612
drawing C028 - 0	
sheet 35	of 101 sheets
file LINE 11.dwg	

This document has been digitally signed.
 05/08/15 9:48 AM

Name
 Discipline
 License No.