

PLUG AND ABANDON EX 2" MAIN AND
3 - EX 1" TAPS LOCATED 6' N
OF NCL OF E 23RD ST N AND
5.5' W OF WL OF CLUB BUILDING

CL ROAD STA 6+82.23, 18.39' RT
= LINE 12 STA 5+92.15
INSTALL 1 - FIRE HYDRANT ASSY
L = 3.64'

CL ROAD STA 7+29.49, 22.04' RT
= EOL LINE 12 STA 6+39.42
INSTALL 1 - 8" TAPPING SLEEVE
INSTALL 1 - 8" TAPPING VALVE (S)
INSTALL 1 - 6" VALVE BOX
(TO BE FURNISHED AND SET BY
CITY OF WICHITA WATER DEPT.)

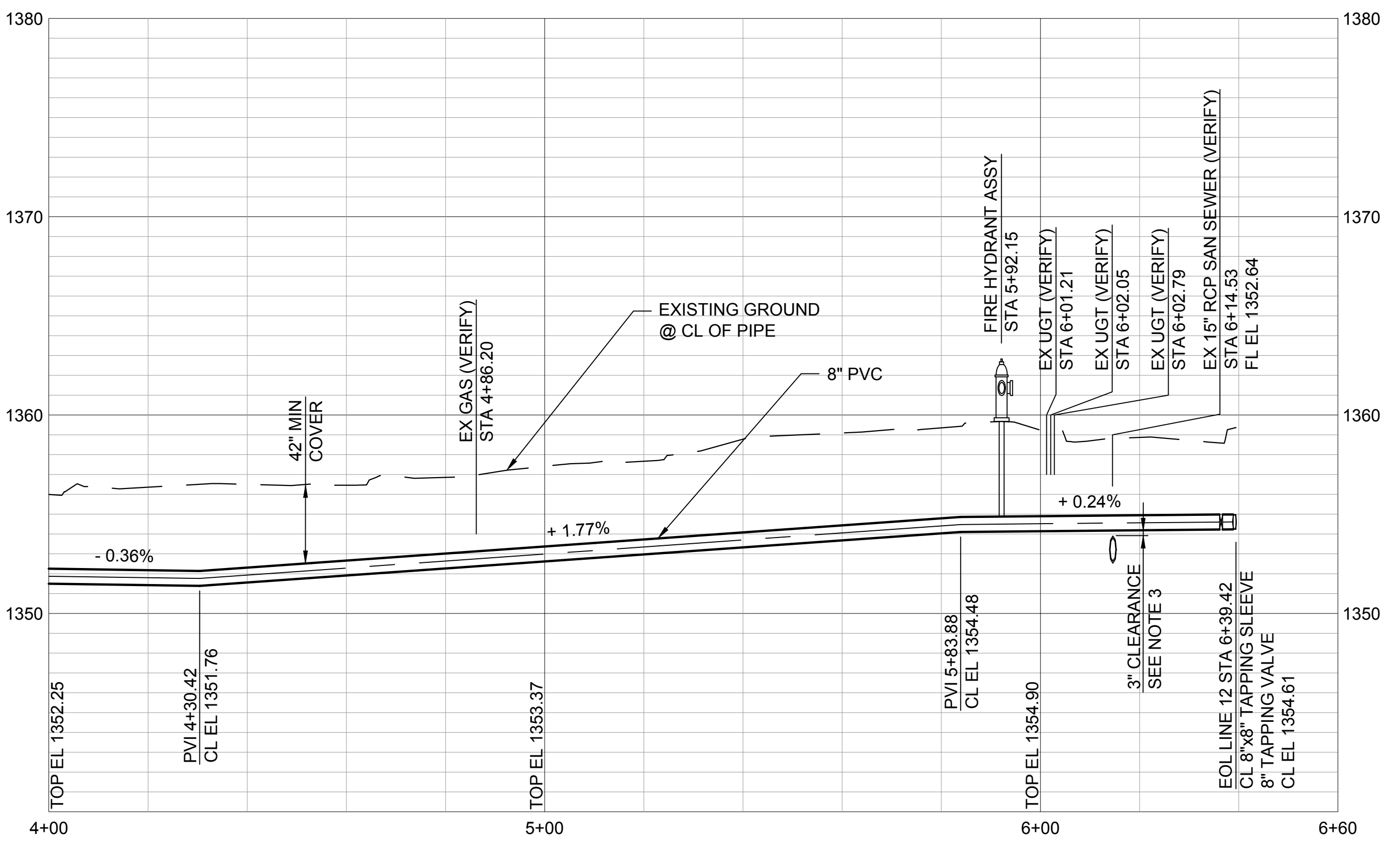
SEE NOTE 1 (TYP)

8" PVC C-900
LINE 12

Scale For Microfitting
Millimeters
Inches

no.	date	by	ckd	description

- NOTE:**
- REFER TO THE WATER SERVICE TRANSFER TABLES, DRAWINGS C092 - C093 FOR METER RELOCATES.
 - INSTALL WATERMAIN BY DIRECTIONAL DRILLING UNLESS OTHERWISE NOTED.
 - FOR SANITARY SEWER CROSSINGS LESS THAN 24" VERTICAL CLEARANCE FROM WATERMAIN, REBUILD SANITARY SEWER PER SPECIFICATION 803.4a.



Burns & McDonnell
SINCE 1898

9400 WARD PARKWAY
KANSAS CITY, MO 64114
816-333-9400
LICENSEE NO. 000165

date	APRIL 24, 2014	detailed	M. CHARRETTE
designed	J. MCNIFF	checked	S. WILSON



**ETHEL NEIGHBORHOOD
WATER MAIN REPLACEMENT
LINE 12 - N LORRAINE AVENUE**

project	77025	contract	448-90612
drawing	rev. C031 - 0		
sheet	38	of	101 sheets
file	LINE 12.dwg		

This document has been digitally signed.
05/08/15 9:49 AM

Name: Julie Ann McNeill
Discipline: Professional Engineer
License No. 21158