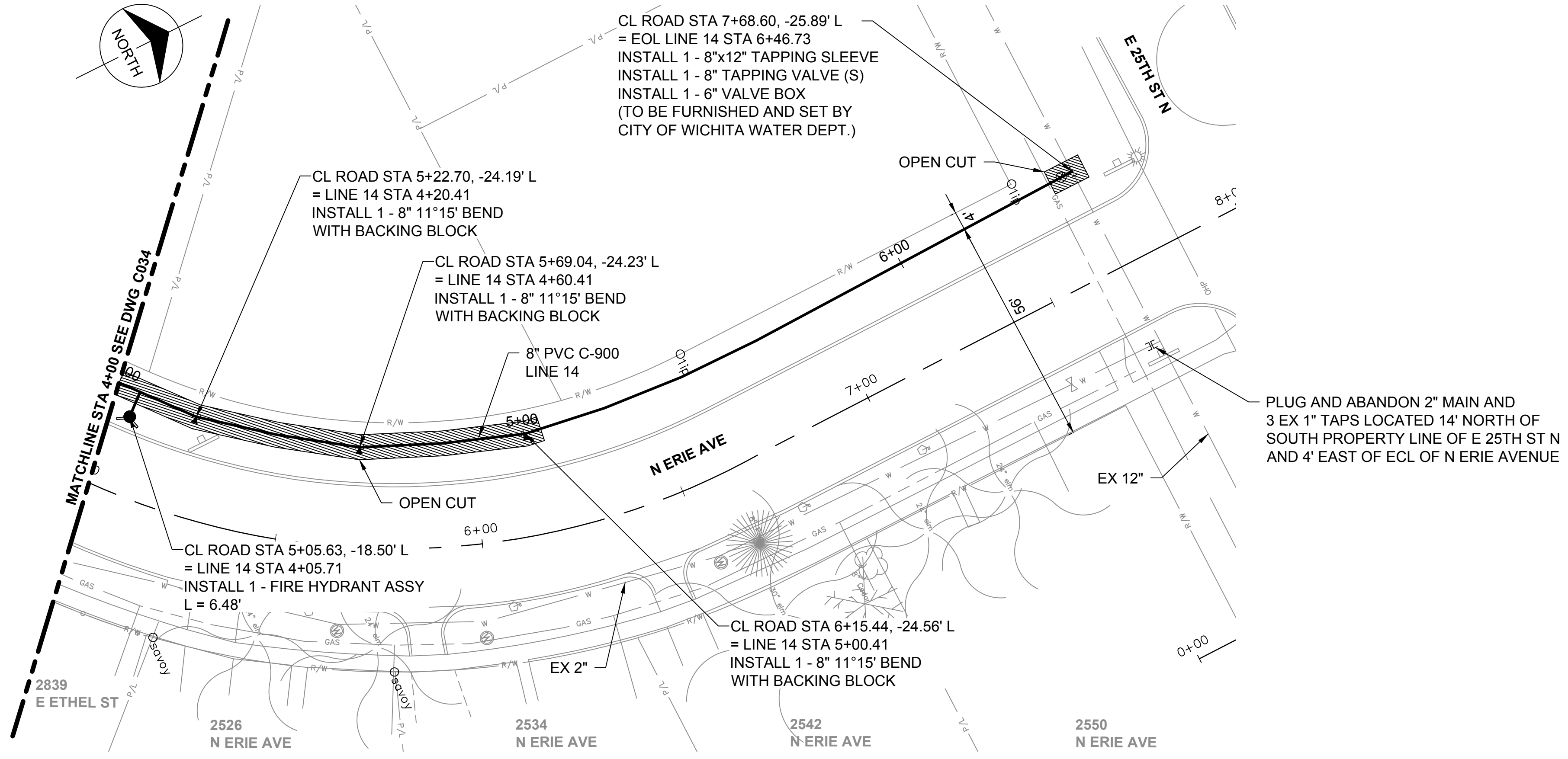
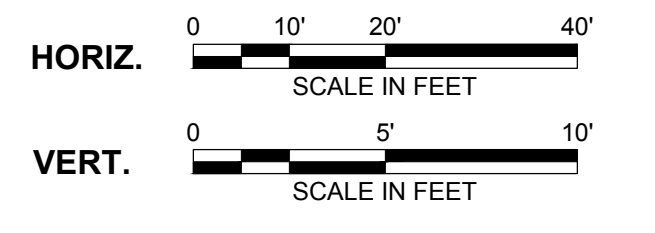


no.	date	by	ckd	description
-----	------	----	-----	-------------

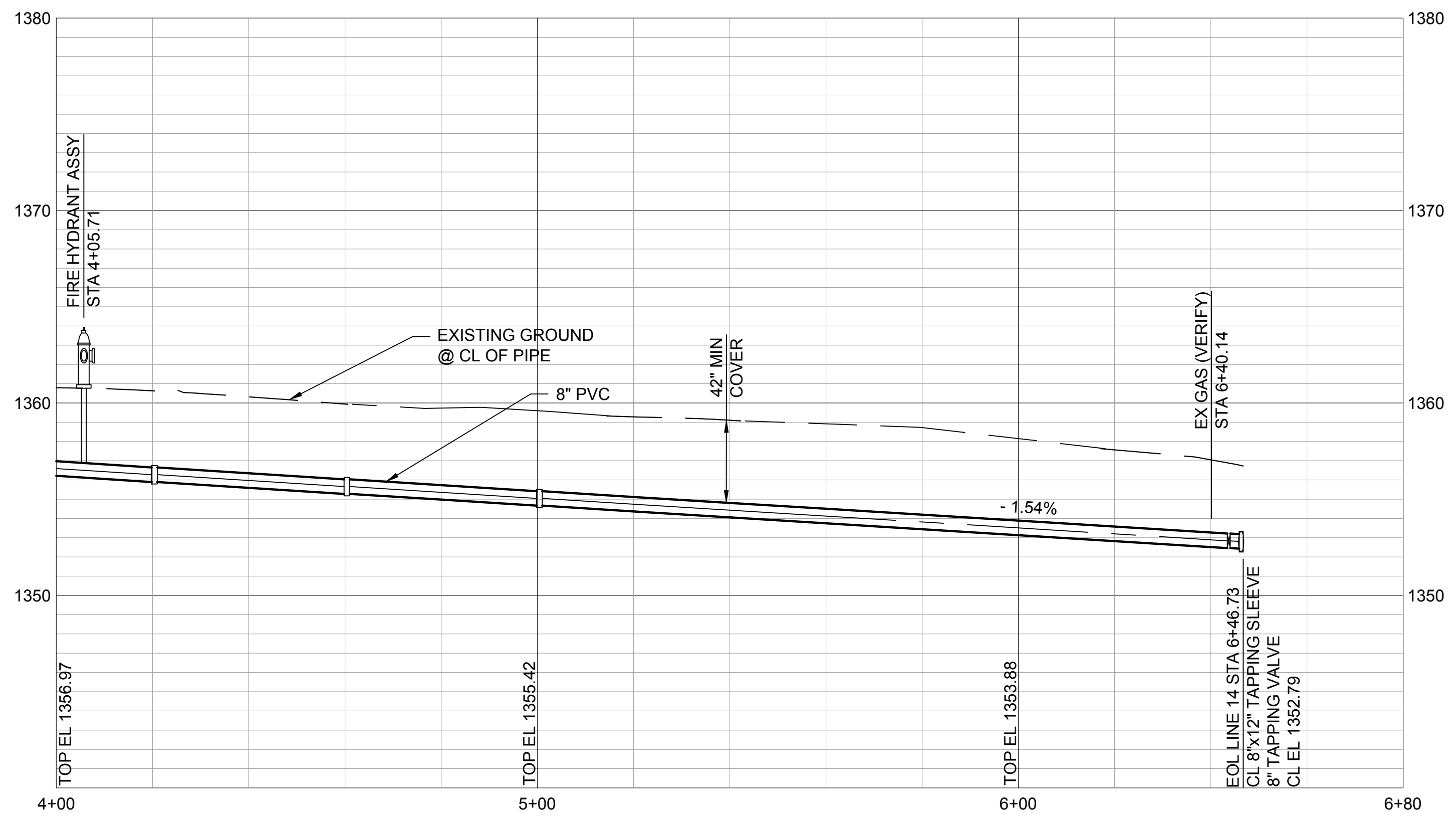


PLUG AND ABANDON 2" MAIN AND 3 EX 1" TAPS LOCATED 14' NORTH OF SOUTH PROPERTY LINE OF E 25TH ST N AND 4' EAST OF ECL OF N ERIE AVENUE

Scale For Microfitting
Millimeters
Inches



- NOTE:**
- REFER TO THE WATER SERVICE TRANSFER TABLES, DRAWINGS C092 - C093 FOR METER RELOCATES.
 - INSTALL WATERMAIN BY DIRECTIONAL DRILLING UNLESS OTHERWISE NOTED.
 - FOR SANITARY SEWER CROSSINGS LESS THAN 24" VERTICAL CLEARANCE FROM WATERMAIN, REBUILD SANITARY SEWER PER SPECIFICATION 803.4a.



Burns & McDonnell
SINCE 1898
9400 WARD PARKWAY
KANSAS CITY, MO 64114
816-333-9400
LICENSEE NO. 000165

date	APRIL 24, 2014	detailed	M. CHARRETTE
designed	J. MCNIFF	checked	S. WILSON



**ETHEL NEIGHBORHOOD
WATER MAIN REPLACEMENT
LINE 14 - N ERIE AVENUE**

project	77025	contract	448-90612
drawing	C035 - 0		rev.
sheet	42	of 101	sheets
file	LINE 14.dwg		

This document has been digitally signed.
05/08/15 9:50 AM

Name
Discipline
License No.