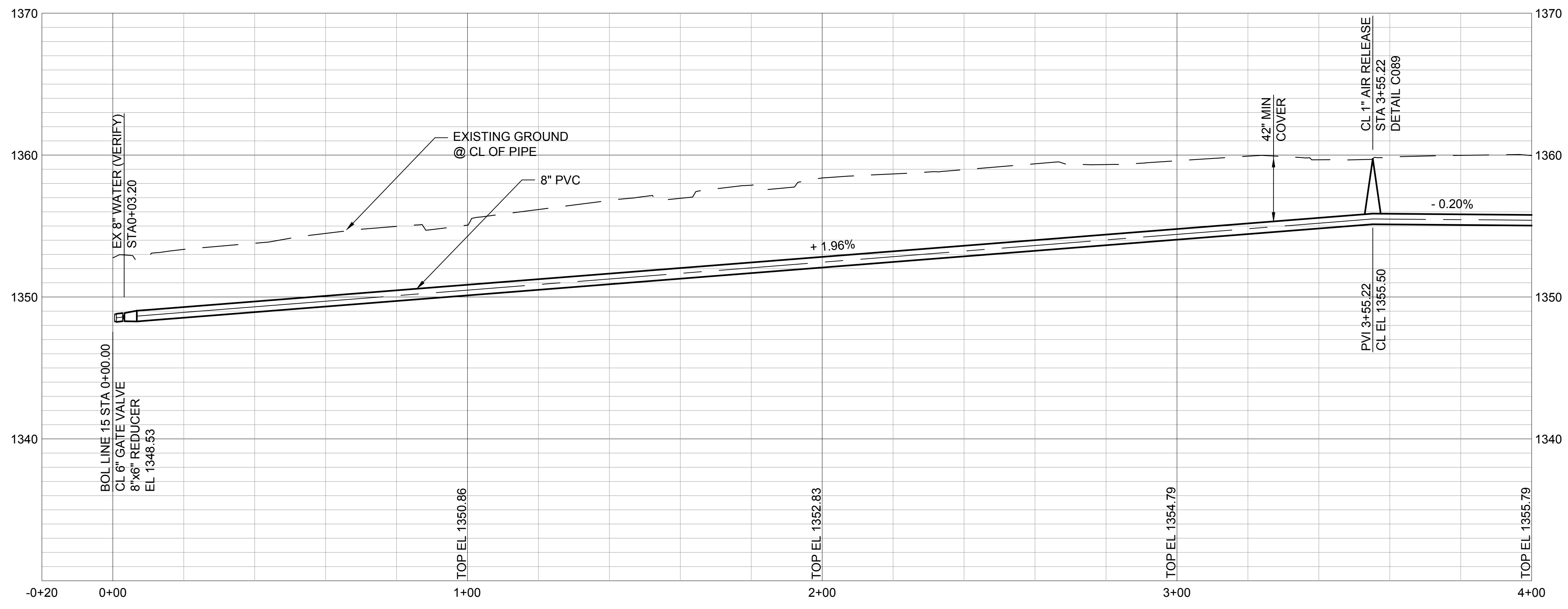


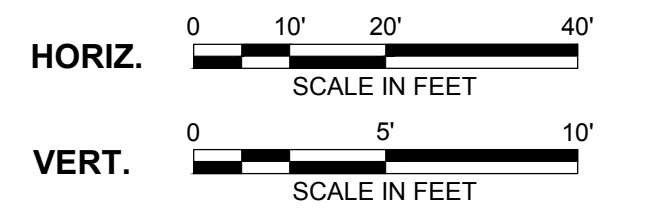
NOTE:
 PLUG AND ABANDONED 2 EX 1" TAPS LOCATED 6' NORTH OF NCL OF E 24TH ST N AND 5' EAST OF ECL OF N ESTELLE.

SEE NOTE 4
 2821 E 24TH ST N



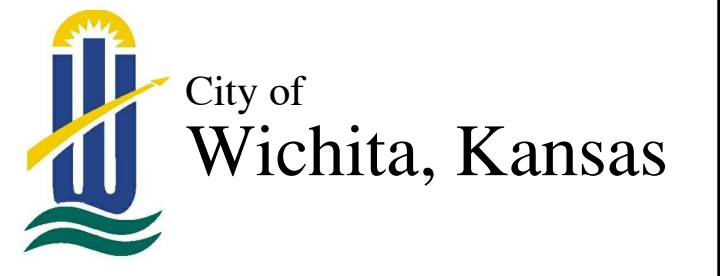
- NOTE:**
1. REFER TO THE WATER SERVICE TRANSFER TABLES, DRAWINGS C092 - C093 FOR METER RELOCATES.
 2. INSTALL WATERMAIN BY DIRECTIONAL DRILLING UNLESS OTHERWISE NOTED.
 3. FOR SANITARY SEWER CROSSINGS LESS THAN 24" VERTICAL CLEARANCE FROM WATERMAIN, REBUILD SANITARY SEWER PER SPECIFICATION 803.4a.
 4. CONTRACTOR SHALL VERIFY ALL METER LOCATIONS FOR 2821 E 24TH ST N AND TRANSFER AS NECESSARY.

no.	date	by	ckd	description
-----	------	----	-----	-------------



Burns & McDonnell
 SINCE 1958
 9400 WARD PARKWAY
 KANSAS CITY, MO 64114
 816-333-9400
 LICENSEE NO. 000165

date	APRIL 24, 2014	detailed	M. CHARRETTE
designed	J. MCNIFF	checked	S. WILSON



**ETHEL NEIGHBORHOOD
 WATER MAIN REPLACEMENT**
 LINE 15 - E 24TH STREET N
 (ESTELLE TO HILLSIDE)

project	77025	contract	448-90612
drawing	rev. C036 - 0		
sheet	43	of	101 sheets
file	LINE 15.dwg		

This document has been digitally signed.
 05/08/15 9:50 AM

Name
 Discipline
 License No.