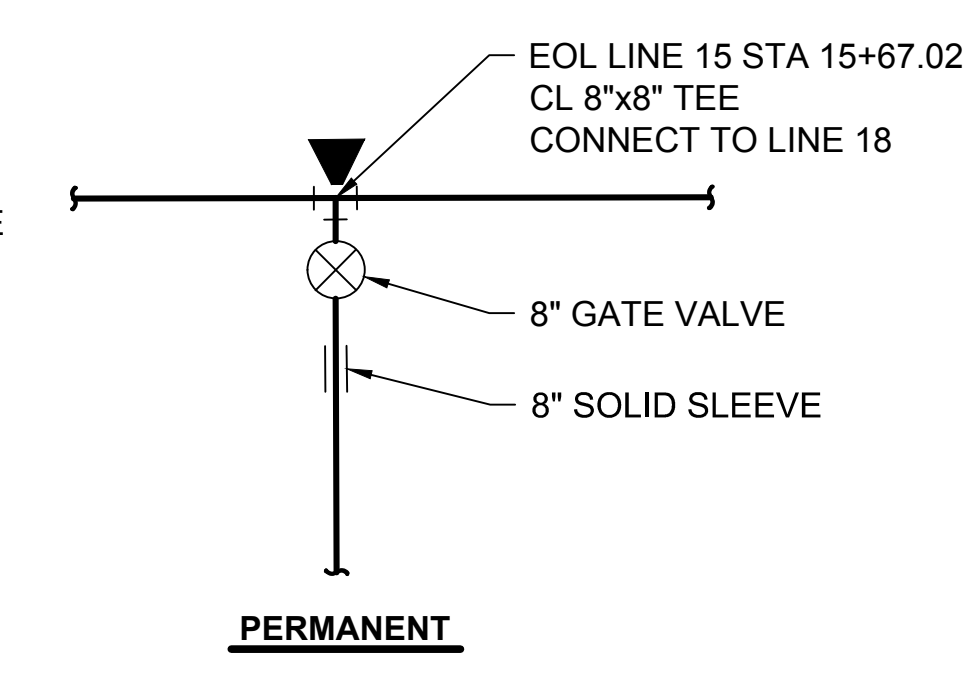
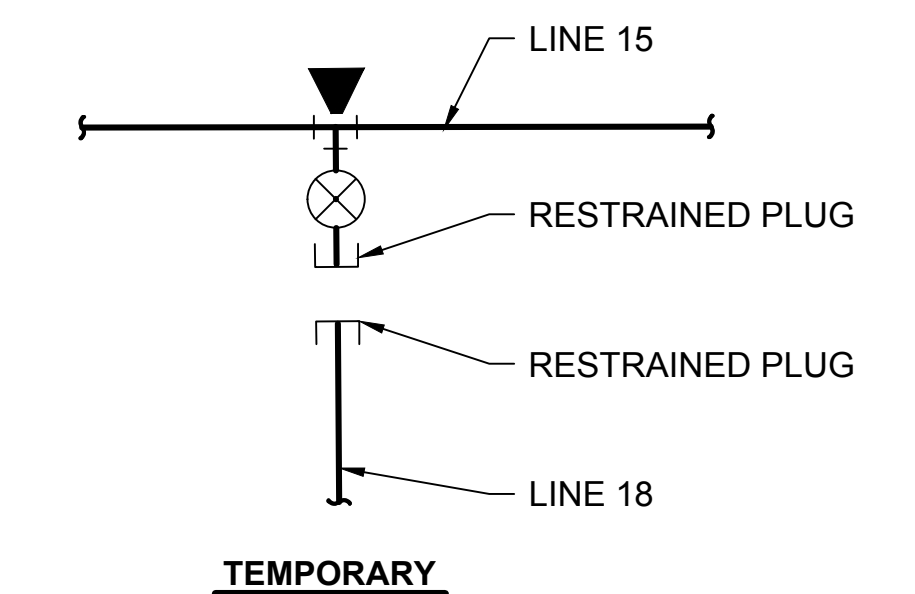
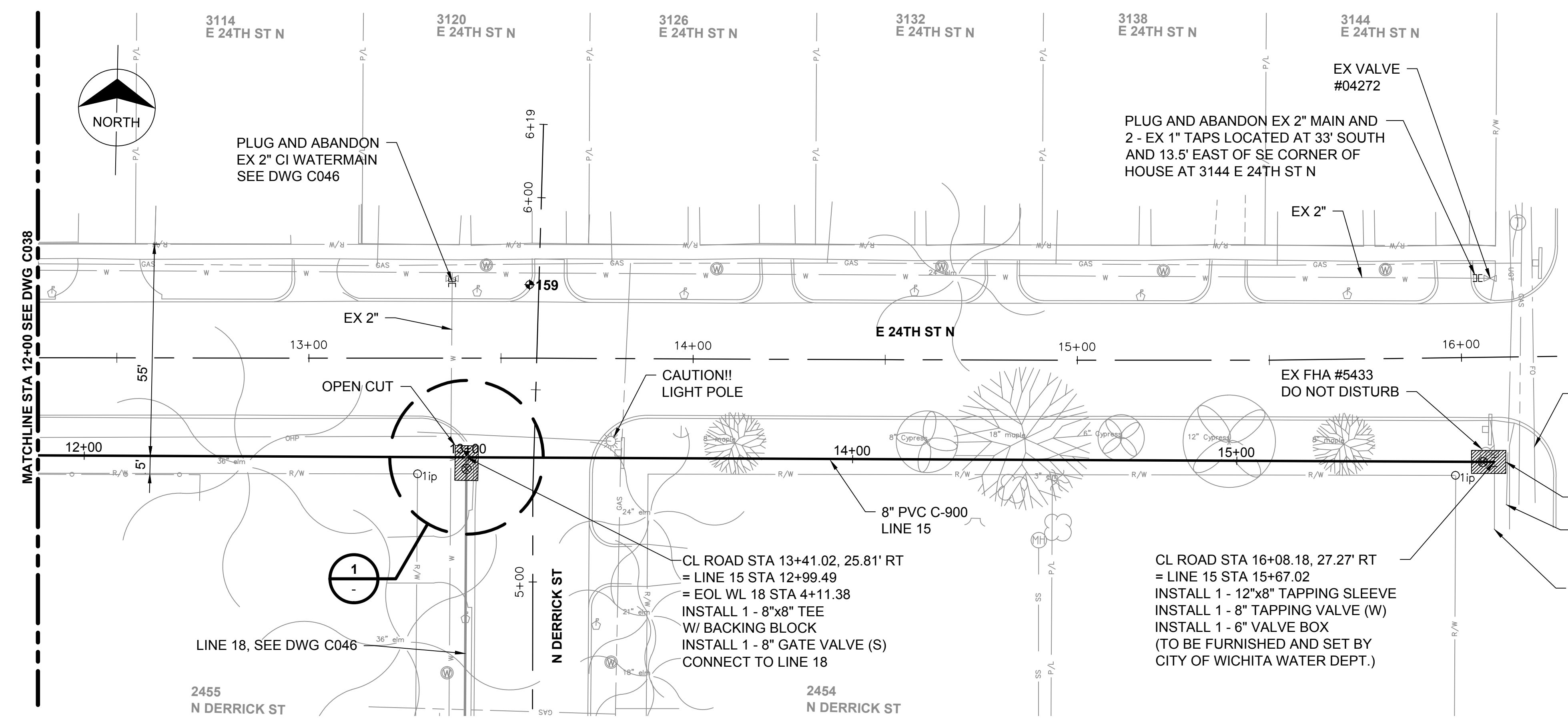


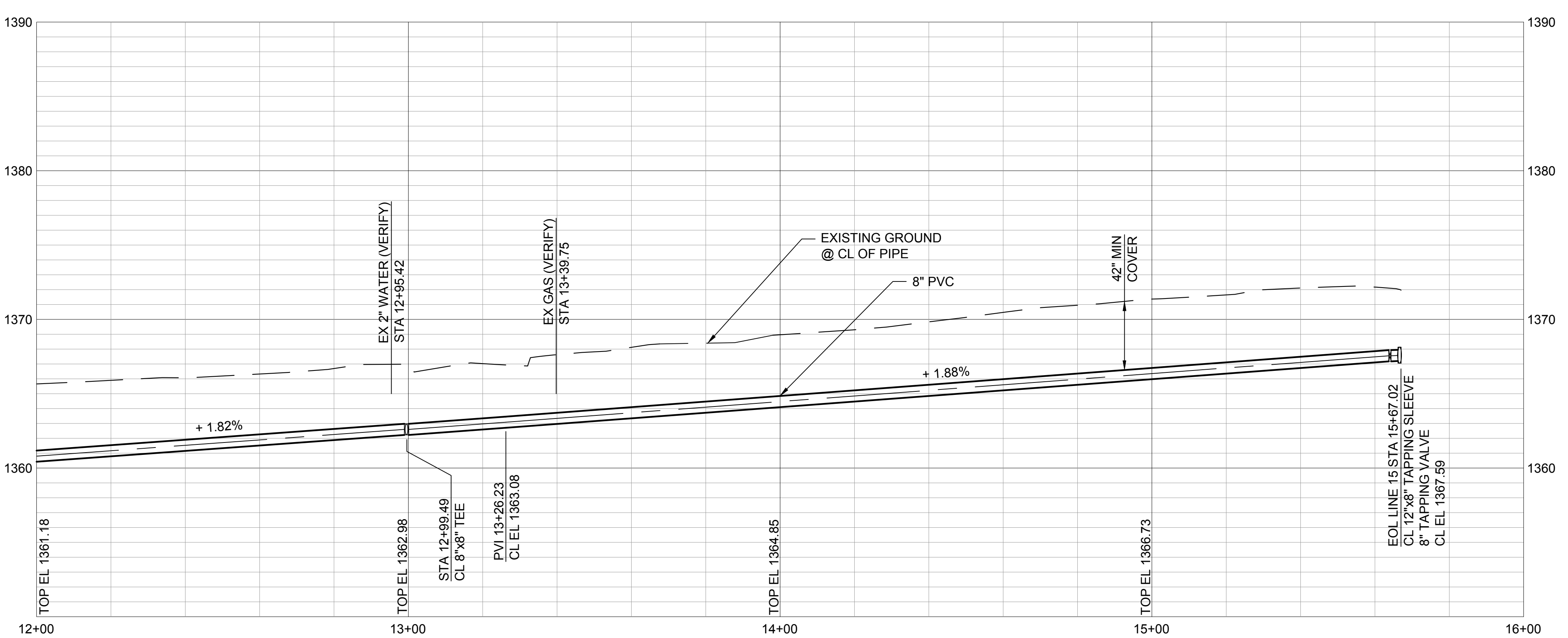
no.	date	by	ckd	description



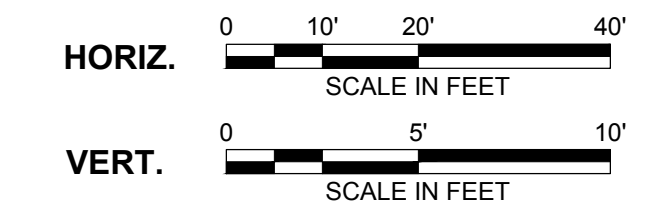
CONNECTION DETAIL
NOT TO SCALE

Scale For Microfitting
Millimeters

Inches



- NOTE:**
- REFER TO THE WATER SERVICE TRANSFER TABLES, DRAWINGS C092 - C093 FOR METER RELOCATES.
 - INSTALL WATERMAIN BY DIRECTIONAL DRILLING UNLESS OTHERWISE NOTED.
 - FOR SANITARY SEWER CROSSINGS LESS THAN 24" VERTICAL CLEARANCE FROM WATERMAIN, REBUILD SANITARY SEWER PER SPECIFICATION 803.4a.



J:\WCHIT\77025 - Ethel\WMA\CADD\06 Civil\LINE 15.dwg May 07, 2015 - 3:13pm mcdonnell
COPYRIGHT © 2015 BURNS & MCDONNELL ENGINEERING COMPANY, INC.

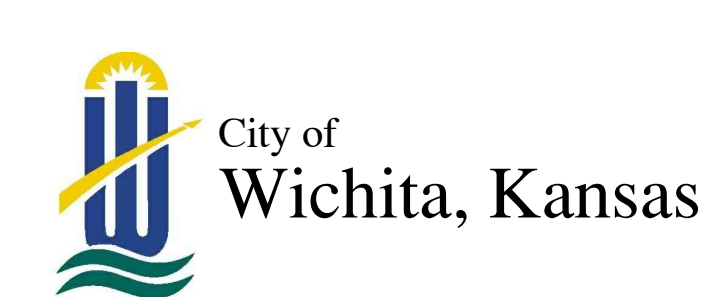
This document has been digitally signed.
05/08/15 9:51 AM

Name
Discipline
License No.

Burns & McDonnell
SINCE 1898

9400 WARD PARKWAY
KANSAS CITY, MO 64114
816-333-9400
LICENSEE NO. 000165

date	APRIL 24, 2014	detailed	M. CHARRETTE
designed	J. MCNIFF	checked	S. WILSON



**ETHEL NEIGHBORHOOD
WATER MAIN REPLACEMENT**
LINE 15 - E 24TH STREET N
(ESTELLE TO HILLSIDE)

project	77025	contract	448-90612
drawing	rev. C039 - 0		
sheet	46	of	101 sheets
file	LINE 15.dwg		