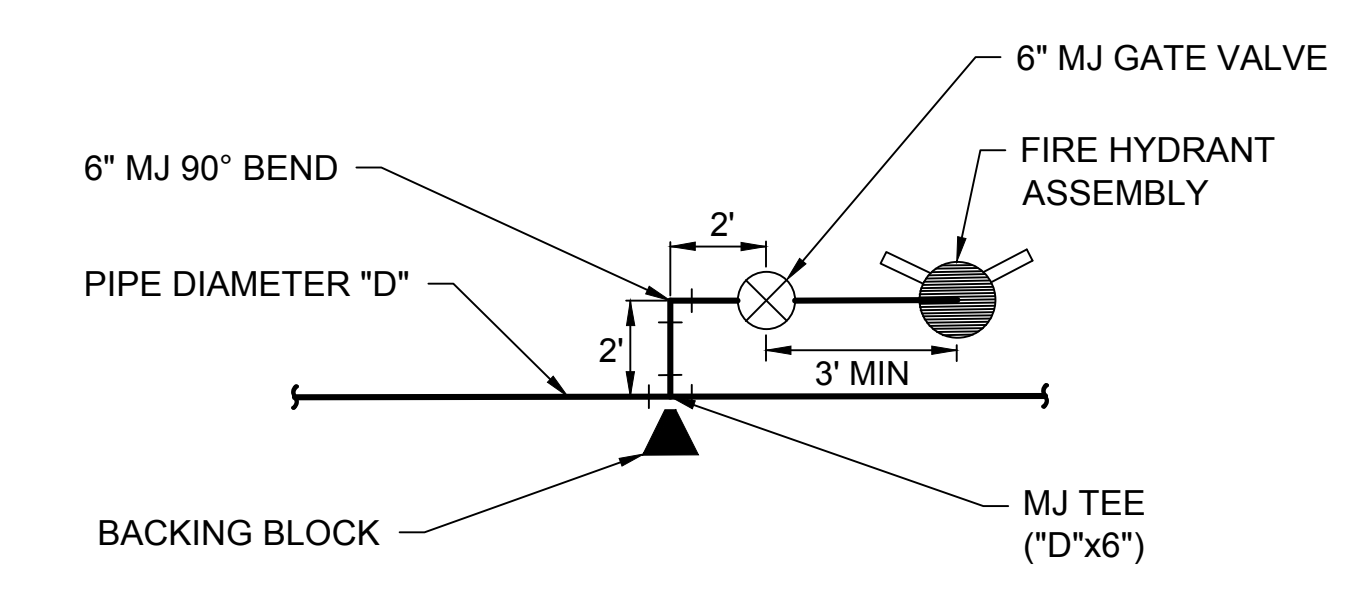
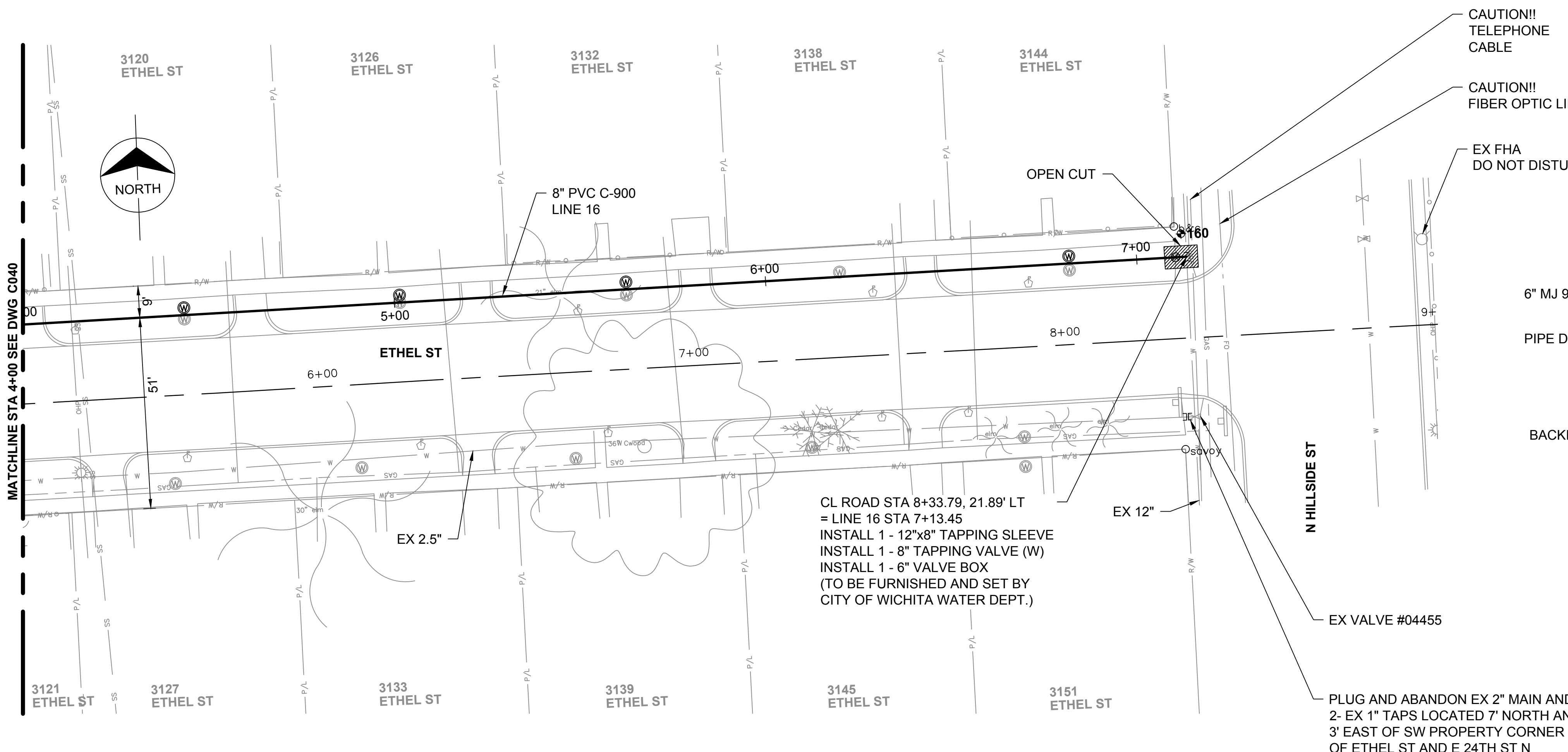
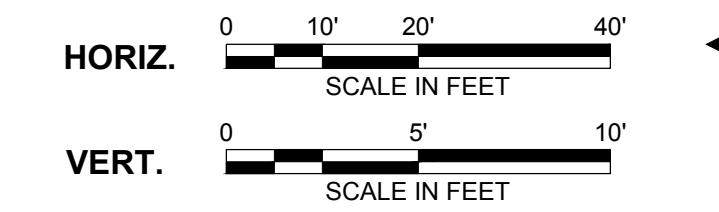


no.	date	by	ckd	description

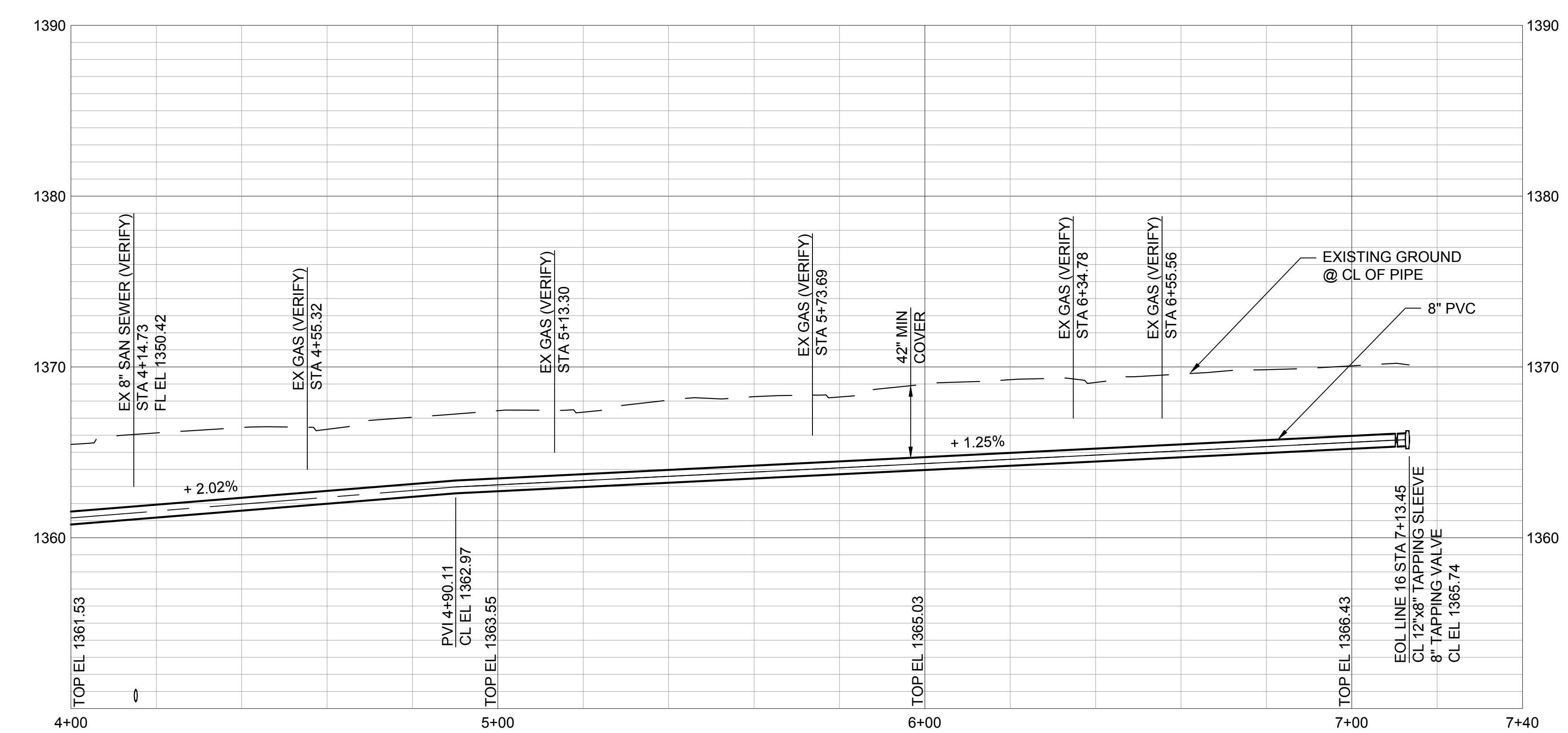


**RESTRAINED JOINT 90° FIRE HYDRANT ASSEMBLY**  
NOT TO SCALE  
(RESTRAIN ALL JOINTS)



- NOTE:**
1. REFER TO THE WATER SERVICE TRANSFER TABLES, DRAWINGS C092 - C093 FOR METER RELOCATES.
  2. INSTALL WATERMAIN BY DIRECTIONAL DRILLING UNLESS OTHERWISE NOTED.
  3. FOR SANITARY SEWER CROSSINGS LESS THAN 24" VERTICAL CLEARANCE FROM WATERMAIN, REBUILD SANITARY SEWER PER SPECIFICATION 803.4a.

Millimeters  
 Scale For Microfitting  
 Inches  
 Scale For Microfitting  
 J:\WCHIT\77025 - Ethel\WMCADD\06 Civil\LINE 16.dwg May 07, 2015 - 4:57pm mcdonnell  
 COPYRIGHT © 2015 BURNS & MCDONNELL ENGINEERING COMPANY, INC.



This document has been digitally signed.  
 05/08/15 9:51 AM  
 Name  
 Discipline  
 License No.

  
 9400 WARD PARKWAY  
 KANSAS CITY, MO 64114  
 816-333-9400  
 LICENSEE NO. 000165

date	APRIL 24, 2014	detailed	M. CHARRETTE
designed	J. MCNIFF	checked	S. WILSON



**ETHEL NEIGHBORHOOD WATER MAIN REPLACEMENT**  
LINE 16 - ETHEL STREET

project	77025	contract	448-90612
drawing	rev. 0		
sheet	48	of	101 sheets
file	LINE 16.dwg		