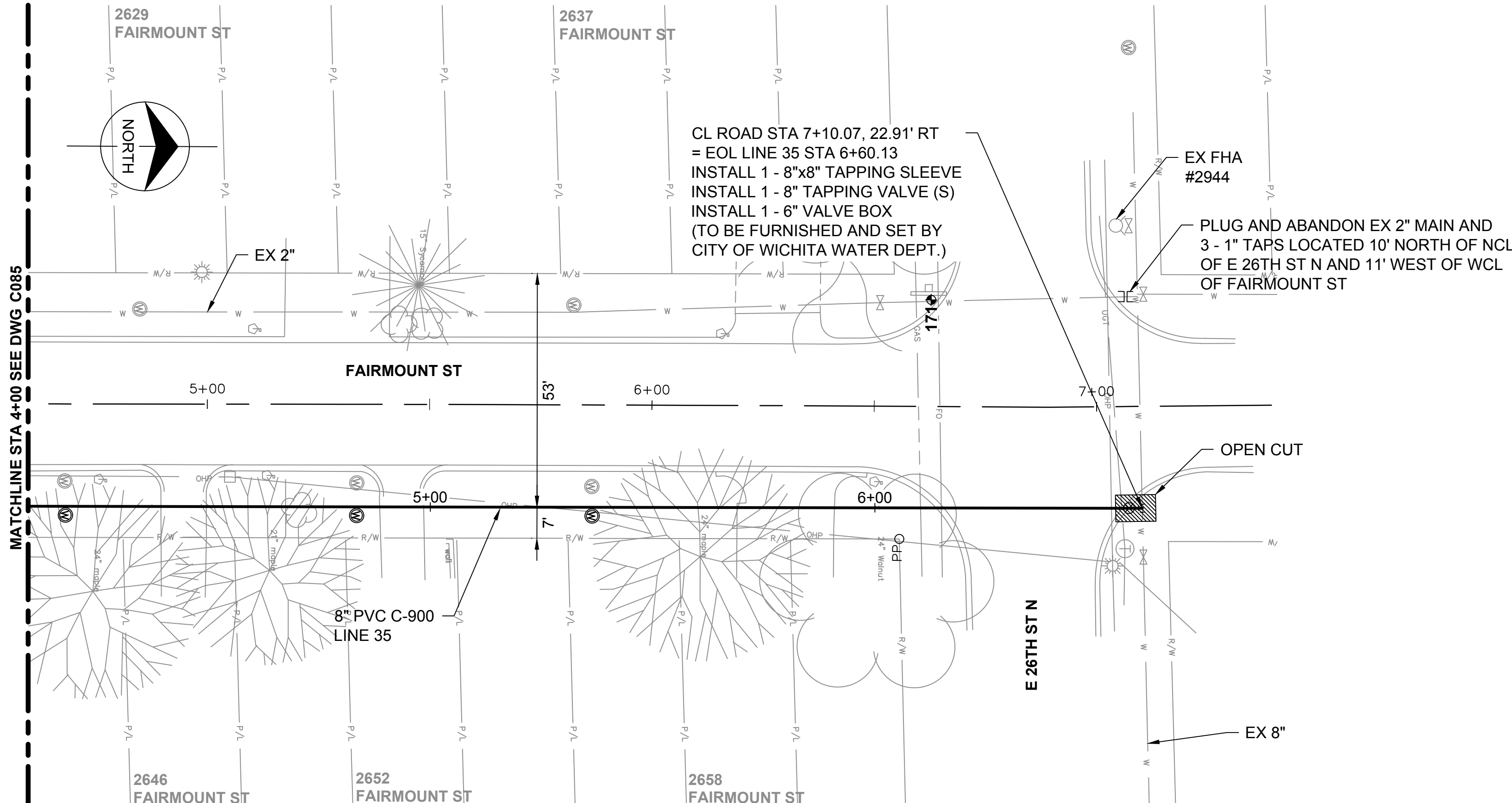


no.	date	by	ckd	description
-----	------	----	-----	-------------

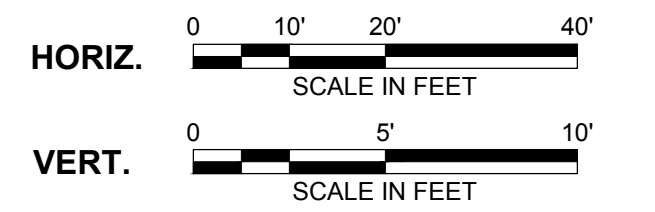


CL ROAD STA 7+10.07, 22.91' RT
 = EOL LINE 35 STA 6+60.13
 INSTALL 1 - 8"x8" TAPPING SLEEVE
 INSTALL 1 - 8" TAPPING VALVE (S)
 INSTALL 1 - 6" VALVE BOX
 (TO BE FURNISHED AND SET BY
 CITY OF WICHITA WATER DEPT.)

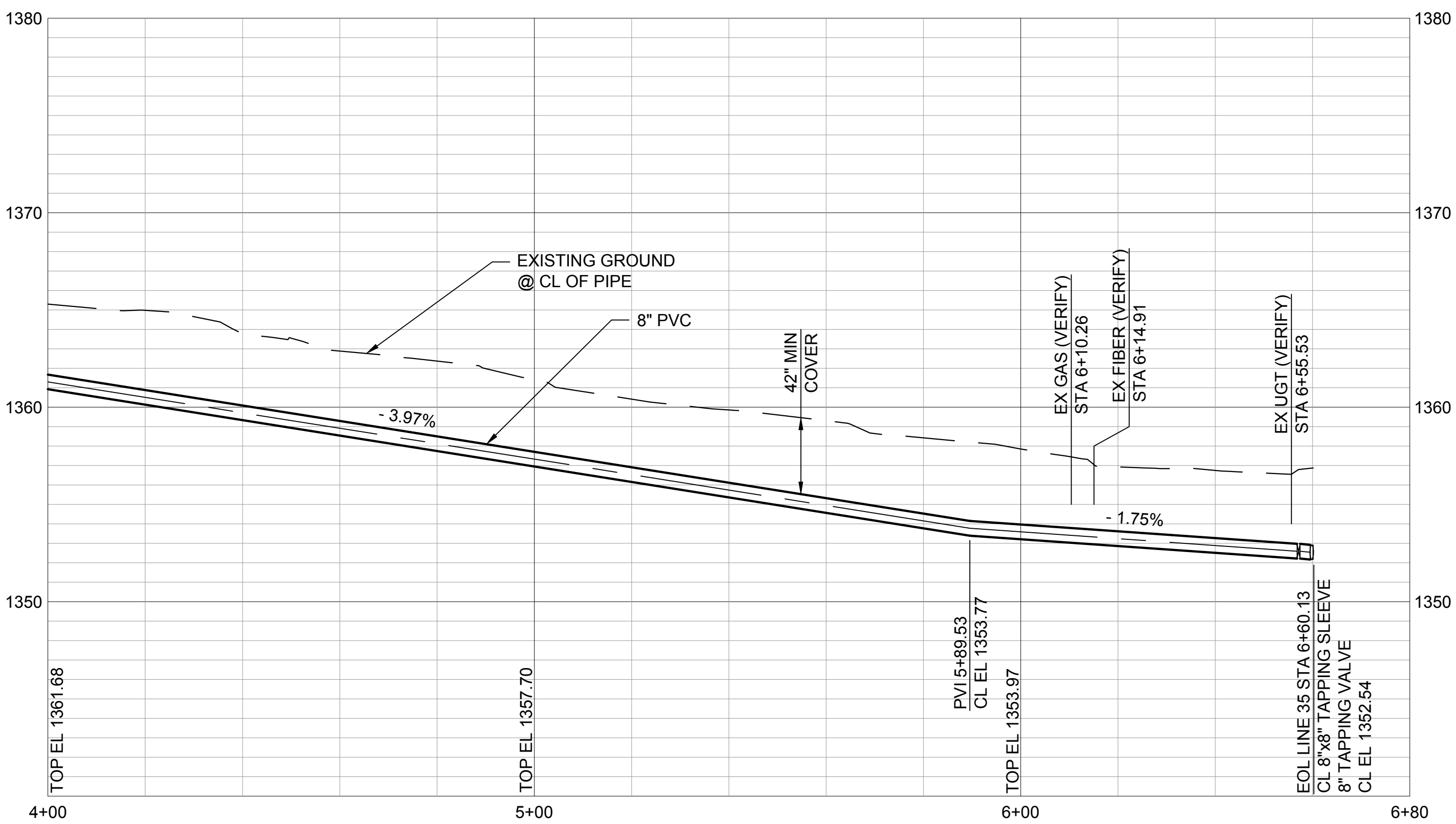
EX FHA #2944

PLUG AND ABANDON EX 2" MAIN AND
 3 - 1" TAPS LOCATED 10' NORTH OF NCL
 OF E 26TH ST N AND 11' WEST OF WCL
 OF FAIRMOUNT ST

Scale For Microfitting
 Millimeters
 Inches



- NOTE:**
- REFER TO THE WATER SERVICE TRANSFER TABLES, DRAWINGS C092 - C093 FOR METER RELOCATES.
 - INSTALL WATERMAIN BY DIRECTIONAL DRILLING UNLESS OTHERWISE NOTED.
 - FOR SANITARY SEWER CROSSINGS LESS THAN 24" VERTICAL CLEARANCE FROM WATERMAIN, REBUILD SANITARY SEWER PER SPECIFICATION 803.4a.



Burns & McDonnell
 SINCE 1898

9400 WARD PARKWAY
 KANSAS CITY, MO 64114
 816-333-9400
 LICENSEE NO. 000165

date APRIL 24, 2014	detailed M. CHARRETTE
designed J. MCNIFF	checked S. WILSON



**ETHEL NEIGHBORHOOD
 WATER MAIN REPLACEMENT
 LINE 35 - FAIRMOUNT STREET**

project 77025	contract 448-90612
drawing C086	rev. 0
sheet 93 of 101 sheets	file LINE 35.dwg

This document has been digitally signed.
 05/08/15 9:55 AM

Name
 Discipline
 License No.