

STORMWATER DRAIN #394 FOR
FOX RIDGE PLAZA ADDITION

©2015
MKEC Engineering
All Rights Reserved
www.mkec.com
These drawings and their contents, including, but not limited to, all concepts, designs, & ideas are the exclusive property of MKEC Engineering (MKEC), and may not be used or reproduced in any way without the express consent of MKEC.

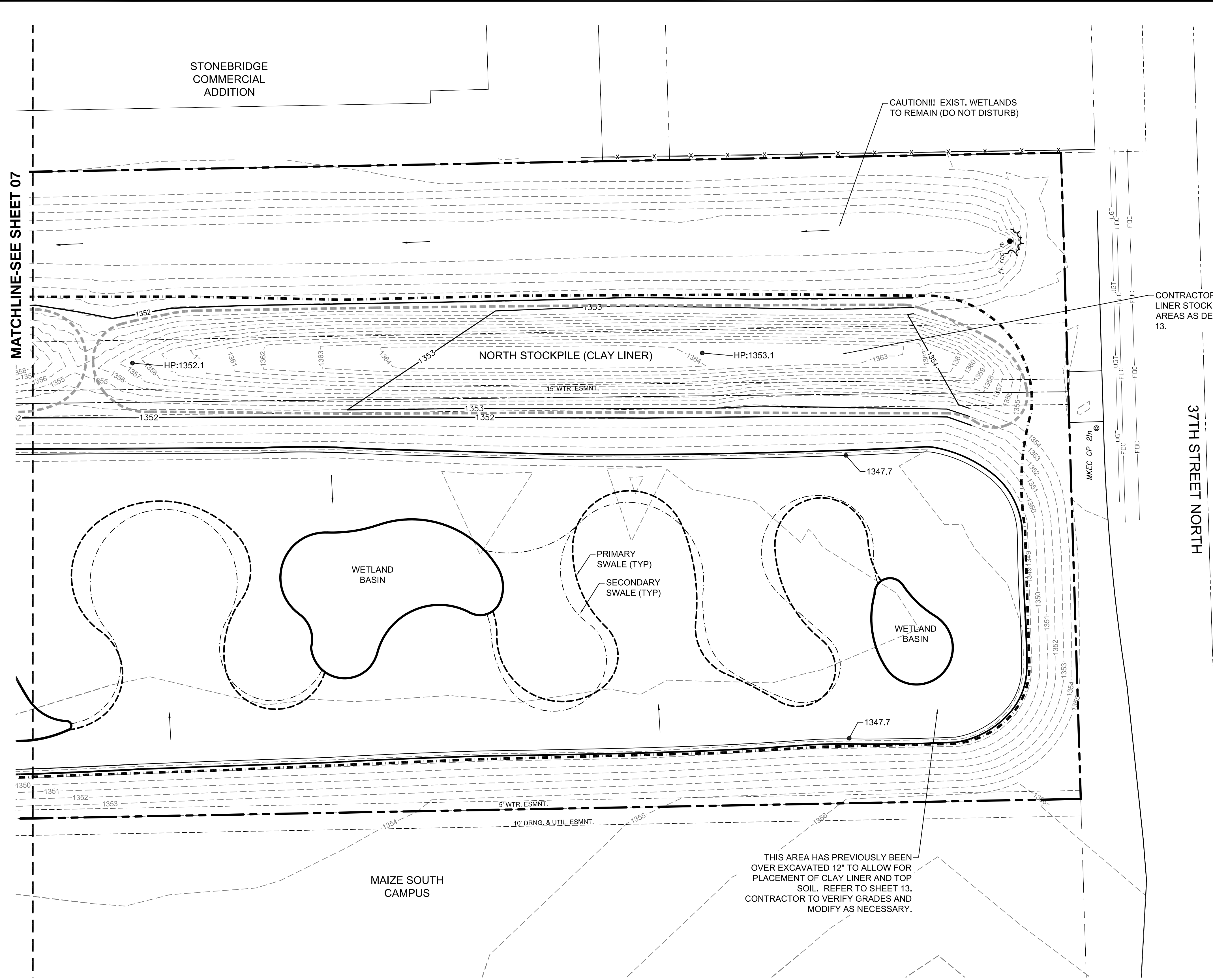
GRADING PLAN
6

PROJECT NO.	468-84953	
DATE	JULY 2015	
SCALE	1"=30'	
DESIGNED	DRAWN	CHECKED
MLP	MLP	GJA

NO.	REVISION	DATE

SHEET NO.
08 OF 21

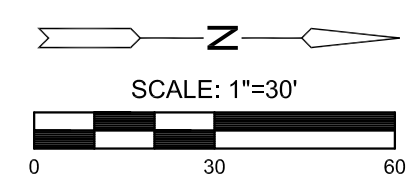
J:\PROJECTS\2011\1010577 PREMIER FOX RIDGE PLAZA\5-CIVIL\CAD\GRD\1577_SDR_DR-01.DWG
 PLOTTED: Wednesday, July 22, 2015 @ 09:18AM



CAUTION!!! EXIST. WETLANDS TO REMAIN (DO NOT DISTURB)

CONTRACTOR SHALL USE CLAY LINER STOCKPILE IN WETLAND AREAS AS DENOTED ON SHEET 13.

THIS AREA HAS PREVIOUSLY BEEN OVER EXCAVATED 12" TO ALLOW FOR PLACEMENT OF CLAY LINER AND TOP SOIL. REFER TO SHEET 13. CONTRACTOR TO VERIFY GRADES AND MODIFY AS NECESSARY.



NOTES:
VERTICAL DATUM USED IS NAVD88.

LEGEND

- 1250--- EXISTING CONTOUR
- 1250— PROPOSED CONTOUR
- W WATERLINE
- |—|— EXISTING SANITARY SEWER
- |—|— EXISTING STORMWATER SEWER
- |—|— EXISTING UNDERGROUND TELEPHONE
- |—|— EXISTING UNDERGROUND ELECTRICAL
- O—O— EXISTING OVERHEAD ELECTRICAL
- FOC— EXISTING FIBER OPTIC CABLE
- — — — — PROPERTY LINE
- — — — — LIMITS OF GRADING
- 1329.86 SPOT ELEVATIONS
- ▭ PROPOSED SIDEWALK
- — — — — PRIMARY SWALE
- · — · — SECONDARY SWALE
- · — · — STOCKPILE