

**PLANT LIST**

PROJECT NO.	468-84953
DATE	JULY 2015
SCALE	1"=30'

DESIGNED	DRAWN	CHECKED
MLP	MLP	JAG

NO.	REVISION	DATE

SHEET NO.

**PLANT MATERIAL LIST**

COMMON NAME	BOTANICAL NAME	TYPE	NOTES
<b>PLUGGED WETLAND</b>			
SWEET FLAG	ACORUS CALAMUS	PLUG	PLACE IN BOTTOM/DEEP ZONE OF BIOSWALE
MUD PLANTAIN	ALISMA SUBCORDATUM	PLUG	PLACE IN BOTTOM/DEEP ZONE OF BIOSWALE
SWAMP MILKWEED	ASCLEPIAS INCARNATE	PLUG	PLACE IN BOTTOM/DEEP ZONE OF BIOSWALE
BLUE JOINT GRASS	CALAMAGROSTIS CANADENSIS	PLUG	PLACE IN BOTTOM/DEEP ZONE OF BIOSWALE
LARGE YELLOW FOX SEDGE	CAREX ANNETENS	PLUG	PLACE IN BOTTOM/DEEP ZONE OF BIOSWALE
SHORTBREAK SEDGE	CAREX BREVIOR	PLUG	PLACE IN BOTTOM/DEEP ZONE OF BIOSWALE
FRANKS SEDGE	CAREX FRANKII	PLUG	PLACE IN BOTTOM/DEEP ZONE OF BIOSWALE
FOX SEDGE	CAREX VULPINOIDEA	PLUG	PLACE IN BOTTOM/DEEP ZONE OF BIOSWALE
NEEDLE SPIKERUSH	ELEOCHARIS ACICULARIS	PLUG	PLACE IN BOTTOM/DEEP ZONE OF BIOSWALE
VIRGINIA WILD RYE	ELYMUS VIRGINICUS	PLUG	PLACE IN BOTTOM/DEEP ZONE OF BIOSWALE
BONESET	EUPATORIUM PERFOLIATUM	PLUG	PLACE IN BOTTOM/DEEP ZONE OF BIOSWALE
BLUE FLAG IRIS	IRIS VIRGINICA	PLUG	PLACE IN BOTTOM/DEEP ZONE OF BIOSWALE
SOFT RUSH	JUNCUS EFFUSUS	PLUG	PLACE IN BOTTOM/DEEP ZONE OF BIOSWALE
GREAT BLUE LOBELIA	LOBELIA SIPHILITICA	PLUG	PLACE IN BOTTOM/DEEP ZONE OF BIOSWALE
SWITCHGRASS	PANICUM VIRGATUM	PLUG	PLACE IN BOTTOM/DEEP ZONE OF BIOSWALE
PICKEREL WEED	PONTEDERIA CORDATA	BARE ROOT	PLACE IN BOTTOM/DEEP ZONE OF BIOSWALE
SLENDER MOUNTAIN MINT	PHYCANTHEMUM TENUIFOLIUM	PLUG	PLACE IN BOTTOM/DEEP ZONE OF BIOSWALE
DUCK POTATO	SAGITTARIA LATIFOLIA	BARE ROOT	PLACE IN BOTTOM/DEEP ZONE OF BIOSWALE
DARK GREEN BULRUSH	SCIRPUS ATROVIRENS	PLUG	PLACE IN BOTTOM/DEEP ZONE OF BIOSWALE
SOFT STEM BULRUSH	SHOENOPLECTUS TABERNAEMONTANI	PLUG	PLACE IN BOTTOM/DEEP ZONE OF BIOSWALE
CUP PLANT	SILPHIUM PERFOLIATUM	PLUG	PLACE IN BOTTOM/DEEP ZONE OF BIOSWALE
BURR REED	SPARGANIUM EUYCARPUM	BARE ROOT	PLACE IN BOTTOM/DEEP ZONE OF BIOSWALE
PRAIRIE CORDGRASS	SPARTINA PECTINATA	PLUG	PLACE IN BOTTOM/DEEP ZONE OF BIOSWALE
WILD GERMANDER	TEUCRUM CANADENSE	PLUG	PLACE IN BOTTOM/DEEP ZONE OF BIOSWALE
BLUE VERVAIN	VERBENA HASTATA	PLUG	PLACE IN BOTTOM/DEEP ZONE OF BIOSWALE
WESTERN IRONWEED	VERONIA BALDWINII	PLUG	PLACE IN BOTTOM/DEEP ZONE OF BIOSWALE
<b>SLOPE MIX (BERM &amp; WETLAND AREA)</b>			
BUTTERFLY MILKWEED	ASCLEPIAS TUBEROSA	SEED MIX	PLACE ON SLOPES
SIDE OATS GRAMMA	BOUTELOUA CUTIPENDULA	SEED MIX	PLACE ON SLOPES
BLUE GRAMMA RASS	BOUTELOUA GRACILIS	SEED MIX	PLACE ON SLOPES
BUFFALO GRASS	BUCHLOE DATYLOIDES	SEED MIX	PLACE ON SLOPES
PURPLE POPPY MALLOW	CALLIRHOE INVOLUCRATA	SEED MIX	PLACE ON SLOPES
SAND COREOPSIS	COREOPSIS LANCEOLATA	SEED MIX	PLACE ON SLOPES
PLAINS COREOPSIS	COREOPSIS TINCTORA	SEED MIX	PLACE ON SLOPES
PURPLE PRAIRIE CLOVER	DALEA PURPUREA	SEED MIX	PLACE ON SLOPES
PALE PURPLE CONEFLOWER	ECHINACEA PALLID	SEED MIX	PLACE ON SLOPES
CANADA WILD RYE	ELYMUS CANADENSIS	SEED MIX	PLACE ON SLOPES
RATTLESNAKE MASTER	ERYNGIUM YUCCIFOLIUM	SEED MIX	PLACE ON SLOPES
JUNE GRASS	KOELERIA MACRANTHA	SEED MIX	PLACE ON SLOPES
ROUGH BLAZING STAR	LIATRIS ASPERA	SEED MIX	PLACE ON SLOPES
DOTTED GAYFEATHER	LIATRIS PUNCTATA	SEED MIX	PLACE ON SLOPES
SWITCHGRASS	PANICUM VIRGATUM	SEED MIX	PLACE ON SLOPES
BEARDTONGUE	PENSTEMON DIGITALIS	SEED MIX	PLACE ON SLOPES
UPRIGHT CONEFLOWER	RATIBA COLUMNIFERA	SEED MIX	PLACE ON SLOPES
BLACK EYED SUSAN	RUDBECKIA HIRTA	SEED MIX	PLACE ON SLOPES
BLUE SAGE	SALVIA AZURA	SEED MIX	PLACE ON SLOPES
LITTLE BLUESTEM	SCHIZACRYRIUM SCOPARIUM	SEED MIX	PLACE ON SLOPES
PRAIRIE DROPSEED	SPOROBOLUS HETEROLEPSIS	SEED MIX	PLACE ON SLOPES
OHIO SPIDERWORT	TRADESCANTIA OHIENSIS	SEED MIX	PLACE ON SLOPES
<b>WET PRAIRIE MIX</b>			
BIG BLUESTEM	ANDROPOGON GERADII	SEED MIX	PLACE IN BASIN OF DRAINAGE AREA
BUR MARIGOLD	BIDENS ARISTOSA	SEED MIX	PLACE IN BASIN OF DRAINAGE AREA
SHORTBREAK SEDGE	CAREX BREVIOR	SEED MIX	PLACE IN BASIN OF DRAINAGE AREA
FOX SEDGE	CAREX VULPINOIDEA	SEED MIX	PLACE IN BASIN OF DRAINAGE AREA
SAND COREOPSIS	COREOPSIS LANCEOLATA	SEED MIX	PLACE IN BASIN OF DRAINAGE AREA
VIRGINIA WILD RYE	ELYMUS VIRGINICUS	SEED MIX	PLACE IN BASIN OF DRAINAGE AREA
BONESET	EUPATORIUM PERFOLIATUM	SEED MIX	PLACE IN BASIN OF DRAINAGE AREA
PRAIRIE BLAZING STAR	LIATRIS PYCHONOSTACHYA	SEED MIX	PLACE IN BASIN OF DRAINAGE AREA
BEE BALM	MONARDA FISTULOSA	SEED MIX	PLACE IN BASIN OF DRAINAGE AREA
SWITCHGRASS	PANICUM VIRGATUM	SEED MIX	PLACE IN BASIN OF DRAINAGE AREA
GREY HEADED CONEFLOWER	RATIBA PINNATA	SEED MIX	PLACE IN BASIN OF DRAINAGE AREA
BLACK EYED SUSAN	RUDBECKIA HIRTA	SEED MIX	PLACE IN BASIN OF DRAINAGE AREA
SWEET BLACK EYED SUSAN	RUDBECKIA SUBTOMENTOSA	SEED MIX	PLACE IN BASIN OF DRAINAGE AREA
INDIAN GRASS	SORGHASTRUM NUTANS	SEED MIX	PLACE IN BASIN OF DRAINAGE AREA
PRAIRIE CORDGRASS	SPARTINA PECTINATA	SEED MIX	PLACE IN BASIN OF DRAINAGE AREA
NEW ENGLAND ASTER	SYMPHYOTRICHUM NOVAE-ANGLIEAE	SEED MIX	PLACE IN BASIN OF DRAINAGE AREA
BLUE VERVAIN	VERBENA HASTATA	SEED MIX	PLACE IN BASIN OF DRAINAGE AREA

**GENERAL NOTES**

- CONTRACTOR SHALL MAKE THEMSELVES FAMILIAR WITH ALL APPLICABLE SPECIFICATIONS RELATED TO THE NATIVE GRASS, WILDFLOWER AND PLUG INSTALLATION IN THE DRAINAGE AREA.
- LANDSCAPE CONTRACTOR IS TO VERIFY THE LOCATION OF ALL UNDERGROUND UTILITIES (INCLUDING THOSE INDICATED ON THE PLAN) PRIOR TO INSTALLATION OF PLANT MATERIAL. UTILITIES CAN BE FLAGGED BY CALLING 811 OR 1-800-344-7233, OR ONLINE AT WWW.KANSASONECALL.COM. DAMAGE TO UTILITIES SHALL BE AVOIDED DURING THE COURSE OF WORK. THE LANDSCAPE CONTRACTOR IS RESPONSIBLE FOR REPAIRING ANY AND ALL DAMAGE TO UTILITIES, STRUCTURES, SITE APPURTENANCES, ETC. WHICH OCCUR AS A RESULT OF THE LANDSCAPE CONSTRUCTION OPERATIONS.
- LANDSCAPE CONTRACTOR SHALL COORDINATE WITH THE MASS GRADING CONTRACTOR TO INSURE THEY THOROUGHLY PREPARE THE TOP SOIL LAYER FOR LANDSCAPE MATERIAL INSTALLATION.
- UNTIL ESTABLISHED (1ST GROWING SEASON) THE CONTRACTOR SHALL PUMP THE POND DOWN AS NECESSARY TO ESTABLISH LIVE PLUGS AND THE WET PRAIRIE MIX.
- LIVE PLUGS AND NATIVE SEED MIXES SHALL BE OBTAINED THROUGH TAYLOR CREEK RESTORATION NURSERIES, APPLIED ECOLOGICAL SERVICES, INC. 1269 N. 22ND RD. BALDWIN CITY, KS 66606 ATTN. ELLIOTT DUEMLER (P) (785) 594-2245 OR APPROVED EQUAL. PLANT AND SEED SUPPLIER SHALL DETERMINE LIVE PLANT QUANTITY SPLIT AND SEED MIX RATIOS AND RATES FROM THE PLANT MATERIAL LIST.

**PLUG INSTALLATION & MAINTENANCE**

**LANDSCAPE MATERIAL INSTALLATION**

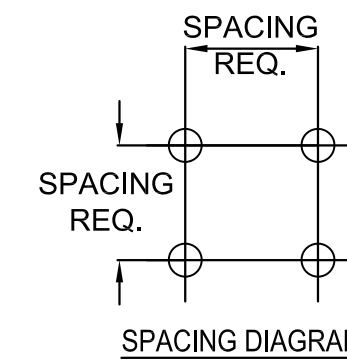
- PROTECTION: THE CONTRACTOR SHALL USE ALL MEANS NECESSARY TO PROTECT ALL MATERIALS BEFORE, DURING AND IMMEDIATELY AFTER INSTALLATION AND TO PROTECT ALL MATERIALS DESIGNATED TO REMAIN, IN THE EVENT OF DAMAGE, THE CONTRACTOR SHALL IMMEDIATELY MAKE ALL REPAIRS AND REPLACEMENTS NECESSARY TO THE APPROVAL OF THE OWNER'S REPRESENTATIVE AND AT NO ADDITIONAL COST TO THE OWNER.
- BIOLOGICAL STORAGE OF BIOLOGICAL PLANT MATERIALS: THE CONTRACTOR SHALL BE RESPONSIBLE FOR THE MAINTENANCE OF ALL BIOLOGICAL PLANT MATERIALS THROUGHOUT THE DURATION OF THE CONSTRUCTION PROJECT. A MINIMUM OF 90% OF ALL PLANTS SHALL BE ALIVE AND GROWING (OR DORMANT) AT THE TIME OF FINAL INSPECTION.
- SUBSTITUTION: AFTER THE START OF CONSTRUCTION THE LANDSCAPE ARCHITECT SHALL CONSIDER SUBSTITUTIONS IN PLANT MATERIALS IN WRITING FROM THE CONTRACTOR. IN SUCH CORRESPONDENCE, THE CONTRACTOR SHALL SUBMIT THE COST OF THE ORIGINAL PLANT MATERIAL AND THE PROPOSED COST OF THE ALTERNATIVE PLANT MATERIAL. ALL SUBSTITUTES MUST BE MADE WITHIN THE CONTRACT MAXIMUM OF THE BID ITEM. SUCH MODIFICATIONS SHALL BE CONSIDERED INCIDENTAL AND SHALL BE PROVIDED BY THE CONTRACTOR AT NO ADDITIONAL COST TO THE OWNER.
- TIME OF YEAR LIMITATION: THE LANDSCAPE ARCHITECT SHALL MAINTAIN THE SOLE AUTHORITY TO ESTABLISH SEASONAL LIMITATIONS REGARDING THE INSTALLATION OF BIOLOGICAL PLANT MATERIALS. THE INITIATION OF A DELAY OR THE DESIGNATION OF A SUITABLE PLANTING PERIOD SHALL BE CONSIDERED INCIDENTAL TO THE PROJECT AND SHALL BE PROVIDED BY THE CONTRACTOR AT NO ADDITIONAL COST TO THE OWNER.
- INSTALLATION DATES: PLANT INSTALLATION SHOULD TAKE PLACE DURING THE OPTIMUM SEEDING DATES AS DETERMINED THROUGH COORDINATION WITH THE LANDSCAPE ARCHITECT AND CONTRACTOR. SPRING IS PREFERRED.
- MATERIAL CONFORMANCE: THE CONTRACTOR SHALL SUBMIT TO THE LANDSCAPE ARCHITECT THE SOURCE OF EACH LOT OF BIOLOGICAL PLANT MATERIAL WITHIN 30 DAYS OF EXPECTED USE. EACH LOT OR ON-SITE SOURCE SHALL BE INSPECTED AND GRADED BY THE LANDSCAPE ARCHITECT AS TO SUITABILITY FOR USE. REJECTED PLANT MATERIALS MUST BE REPLACED BY THE CONTRACTOR.
- THE CONTRACTOR SHALL PROVIDE A CONTROLLED RELEASE FORMULATION OF PLANT FERTILIZER IN A TABLET SIZE OF 21 GRAMS. MATERIAL SHALL BE HEALTHY START 12-8-8 MACRO TABLETS OR APPROVED EQUAL.
- THE CONTRACTOR SHALL PROVIDE A MYCORRHIZAL INOCULANT CONTAINING OF VA MYCORRHIZAL AND ECTOMYCORRHIZAL FUNGI. MATERIAL SHALL BE PHC PLANT SAVER AT MANUFACTURED BY PLANT HEALTH CARE, INC. OR APPROVED EQUAL.
- DIG YOUR HOLES AS DEEP OR DEEPER THAN THE ROOTS OF THE PLUGS. THE SOIL SHOULD BE PACKED LIGHTLY AROUND THE ROOTS. PLANTS SHALL BE REMOVED FROM THEIR CONTAINERS AND PLANTED ONE FOOT ON CENTER OR AS SPECIFIED BY THE LANDSCAPE ARCHITECT. EACH PLANT SHALL BE PLANTED IN A SUITABLY HAND EXCAVATED HOLE WITH PLANT TABLET FERTILIZER AND MYCORRHIZAL INOCULANT THEN IMMEDIATELY WATERED. POTTED PLANTING AREAS TO BE TREATED WITH PRE-EMERGENT IN ACCORDANCE WITH MANUFACTURER'S RECOMMENDATIONS. KEEP THE PLANTS WELL WATERED (SOIL SURFACE DAMP) FOR THE FIRST TWO WEEKS.
- SEE CONSTRUCTION PLAN SHEETS FOR ADDITIONAL INFORMATION.

**ESTABLISHMENT (BY OTHERS)**

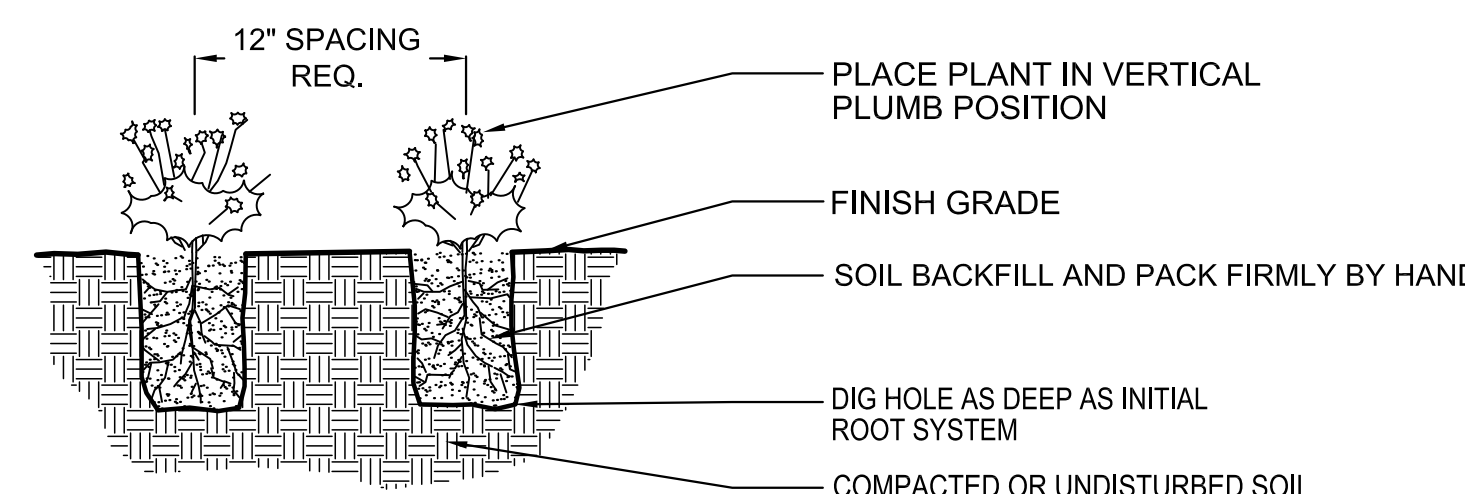
- FERTILIZING: GENERALLY FERTILIZING IS NOT REQUIRED OR RECOMMENDED FOR NATIVE GRASS OR WILDFLOWER ESTABLISHMENT AS IT WOULD PROMOTE WEED GROWTH. NO ADDITIONAL FERTILIZING IS NECESSARY.
- WATERING: DURING THE ESTABLISHMENT PHASE, SUPPLEMENTAL WATERING (ONCE A WEEK) FOR 4 TO 6 WEEKS MAY BE REQUIRED TO ESTABLISHMENT; THEN GRADUALLY REDUCE WATERING. A TEMPORARY IRRIGATION SYSTEM SHALL BE UTILIZED FOR INITIAL PLANT ESTABLISHMENT IF NECESSARY. ADDITIONAL WATERING WILL BE REQUIRED DURING TIMES OF PROLONGED DRY WEATHER IN THE FIRST 2-3 GROWING SEASONS.
- MANAGEMENT DURING ESTABLISHMENT: WEED CONTROL IS NECESSARY IN RAIN GARDENS TO REDUCE COMPETITION FOR MOISTURE, NUTRIENTS AND SUNLIGHT. HERBICIDES ARE NOT RECOMMENDED, AS THEY WILL HARM THE WILDFLOWER STAND. IF NECESSARY, HERBICIDES MAY BE APPLIED USING A WICK APPLICATOR.
- TRASH AND DEBRIS REMOVAL: THE BMP AREA SHOULD BE INSPECTED FOLLOWING MAJOR STORMS AND ON A REGULAR MONTHLY SCHEDULE. ANY TRASH OR DEBRIS SHOULD BE REMOVED AS SOON AS IT IS FOUND TO PREVENT PLANTS FROM BEING SMOTHERED. REGULARLY REMOVING TRASH AND DEBRIS WILL MAINTAIN AESTHETICS OF THE FEATURE. ALL TRASH AND DEBRIS SHOULD BE DISPOSED OF PROPERLY.
- VEGETATION REVIEW AND INSPECT VEGETATION WITHIN THE PLANTING AREA ON A MONTHLY BASIS DURING THE SPRING AND SUMMER MONTHS. INSPECTION SHOULD BE PERFORMED TO DETERMINE HEALTH AND TO IDENTIFY WEEDS AND INVASIVE SPECIES. INSPECTIONS SHOULD BE PERFORMED BY A PERSON TRAINED IN PLANT IDENTIFICATION AND CHARACTERISTICS. VEGETATION SHOULD ONLY INCLUDE PLANT SPECIES AS IDENTIFIED ON THE LANDSCAPE PLAN CONSTRUCTION DOCUMENTATION. ALL OTHER PLANT SPECIES NOT IDENTIFIED IN THE PLANT LIST ARE TO BE REMOVED (BY HAND) DURING MAINTENANCE.
- FALL AND WINTER MANAGEMENT: PLUGGED AREAS SHOULD BE MOWED FOLLOWING A HARD FREEZE AND AFTER PLANTS HAVE ESTABLISHED SEEDS. IF MOWING IS USED IT SHOULD BE A TWO STEP PROCESS. MOW SITE AND THEN REMOVE TOP GROWTH. TOP GROWTH MAY BE REMOVED BY RAKING, BALING OR MOWING WITH A BAGGER BUT A LAWN VACUUM SHOULD NOT BE USED.

**NATIVE GRASS & WILDFLOWER INSTALLATION**

- SEEDBED PREPARATION: ONCE TOPSOIL HAS BEEN PLACED, DISC/SCARIFY SOIL PRIOR TO SEEDING UNLESS SEEDING INTO INTENTIONALLY PLANTED COVER CROP.
- IT IS INTENDED A COVER CROP BE PLANTED IN THE FALL FOR THIS PROJECT. (REFER TO EROSION CONTROL PLAN NOTES)
- SEEDING METHOD: SEED PLACEMENT IS IMPORTANT AND SHOULD BE PLANTED NO MORE THAN 1/4" DEEP. TO ENSURE ACCURATE PLACEMENT OF SEED IT IS PREFERRED THAT SEED IS PLACED WITH A 'SEED DRILL' OR 'NO-TILL DRILL'. WHEN THIS METHOD IS NOT PRACTICAL THE SEED BED CAN BE PREPARED WITH A CULTIPACKER THEN BROADCAST SEED AND ROLL AGAIN. NOTE: A CULTIPACKER IS A SEGMENTED ROLLER THAT PREPARES THE SEEDBED THEN SLIGHTLY COMPACT THE SOIL AFTER SEEDING.
- SEEDING RATES: ALL SEED SHOULD BE PLACED AT A UNIFORM RATE OVER THE DELINEATED AREA AT THE SPECIFIED SEEDING RATE ACCORDING TO THE DIRECTIONS OF THE SEED SUPPLIER (A.E.S. OR APPROVED EQUAL).
- SEEDING DATES: PLANT SEED BETWEEN MARCH 25TH AND APRIL 10TH (PREFERRED) BETWEEN FEBRUARY 15TH AND MAY 1ST (ACCEPTABLE); OR AS APPROVED BY THE LANDSCAPE ARCHITECT THROUGH COORDINATION WITH THE CONTRACTOR.
- FERTILIZING: GENERALLY FERTILIZING IS NOT REQUIRED OR RECOMMENDED FOR NATIVE GRASS OR WILDFLOWER ESTABLISHMENT AS IT WOULD PROMOTE WEED GROWTH. IN THIS INSTANCE HOWEVER, ALL WEEDS SHOULD BE KILLED PRIOR TO PLANTING. THE ONE TIME APPLICATION OF A GRANULAR FERTILIZER IS RECOMMENDED DURING ESTABLISHMENT.
- WATERING (BY OTHERS): DURING THE ESTABLISHMENT PHASE, SUPPLEMENTAL WATERING (ONCE A WEEK) FOR 4 TO 6 WEEKS MAY BE REQUIRED TO ENSURE SEED GERMINATION; THEN GRADUALLY REDUCE WATERING. A TEMPORARY IRRIGATION SYSTEM SHALL BE UTILIZED FOR INITIAL PLANT ESTABLISHMENT IF NECESSARY. ADDITIONAL WATERING WILL BE REQUIRED DURING TIMES OF PROLONGED DRY WEATHER IN THE FIRST 2-3 GROWING SEASONS.
- MANAGEMENT DURING ESTABLISHMENT (BY OTHERS): WEED CONTROL IS NECESSARY IN NEW SEEDING TO REDUCE COMPETITION FOR MOISTURE, NUTRIENTS AND SUNLIGHT. HERBICIDES ARE NOT RECOMMENDED, AS THEY WILL HARM THE WILDFLOWER STAND. IF NECESSARY, HERBICIDES MAY BE APPLIED USING A WICK APPLICATOR. MOWING DURING THE FIRST YEAR OF ESTABLISHMENT IS THE MOST APPROPRIATE METHOD TO REDUCE WEED POPULATIONS. MOWING MUST TAKE PLACE BEFORE THE WEEDY PLANTS PRODUCE SEED. WEEDS SHALL BE MOWED BEFORE THEY ARE 6" TALL; AS MUCH OF THE WEED SHOULD BE CUT AS POSSIBLE WITHOUT REMOVING TOO MUCH OF THE NEW GROWTH OF NATIVE GRASSES.
- TRASH AND DEBRIS REMOVAL: THE BMP AREA SHOULD BE INSPECTED FOLLOWING MAJOR STORMS AND ON A REGULAR MONTHLY SCHEDULE. ANY TRASH OR DEBRIS SHOULD BE REMOVED AS SOON AS IT IS FOUND TO PREVENT PLANTS FROM BEING SMOTHERED. REGULARLY REMOVING TRASH AND DEBRIS WILL MAINTAIN AESTHETICS OF THE FEATURE. ALL TRASH AND DEBRIS SHOULD BE DISPOSED OF PROPERLY.
- VEGETATION (BY OTHERS): REVIEW AND INSPECT VEGETATION WITHIN THE PLANTING AREA ON A MONTHLY BASIS DURING THE SPRING AND SUMMER MONTHS. INSPECTION SHOULD BE PERFORMED TO DETERMINE HEALTH AND TO IDENTIFY WEEDS AND INVASIVE SPECIES. INSPECTIONS SHOULD BE PERFORMED BY A PERSON TRAINED IN PLANT IDENTIFICATION AND CHARACTERISTICS. VEGETATION SHOULD ONLY INCLUDE PLANT SPECIES AS IDENTIFIED IN THE SEED MIX SPECIFIED. ALL OTHER PLANT SPECIES NOT IDENTIFIED IN SEED MIX ARE TO BE REMOVED DURING MAINTENANCE.
- FALL AND WINTER MANAGEMENT (BY OTHERS): SEEDING AREAS SHOULD BE MOWED FOLLOWING A HARD FREEZE AND AFTER PLANTS HAVE ESTABLISHED SEEDS. IF MOWING IS USED IT SHOULD BE A TWO STEP PROCESS. MOW SITE AND THEN REMOVE TOP GROWTH. TOP GROWTH MAY BE REMOVED BY RAKING, BALING OR MOWING WITH A BAGGER BUT A LAWN VACUUM SHOULD NOT BE USED.
- SATISFACTORY NATIVE STAND: WITHIN ONE FULL GROWING SEASON AND AT THE END OF THE MAINTENANCE PERIOD, A HEALTHY, WELL-ROOTED, VISIBLE NATIVE STAND SHALL BE ESTABLISHED, FREE OF BARE AREAS GREATER THAN TWO SQUARE FEET IN SIZE AND FREE OF BROADER AREAS FAILING TO ACHIEVE 85% DESIRABLE PLANT COVERAGE.
- REESTABLISH NATIVE STANDS THAT DO NOT COMPLY WITH REQUIREMENTS AND CONTINUE MAINTENANCE UNTIL NATIVE STANDS ARE SATISFACTORY.



NOTES:  
DO NOT ALLOW PLUGS TO DRY OUT. KEEP MOIST AND PROTECTED FROM DAMAGE PRIOR TO PLANTING. WATER THOROUGHLY TO FINISH PACKING SOIL AROUND ROOTS.



**TYPICAL PLUG INSTALLATION**  
NOT TO SCALE