

STORMWATER DRAIN #394 FOR
FOX RIDGE PLAZA ADDITION

©2015
MKEC Engineering
All Rights Reserved
www.mkec.com
These drawings and their contents, including, but not limited to, all concepts, designs, & ideas are the exclusive property of MKEC Engineering (MKEC), and may not be used or reproduced in any way without the express consent of MKEC.

EROSION CONTROL PLAN

PROJECT NO.	468-84953	
DATE	JULY 2015	
SCALE	1"=100'	
DESIGNED	DRAWN	CHECKED
MLP	MLP	GJA

NO.	REVISION	DATE

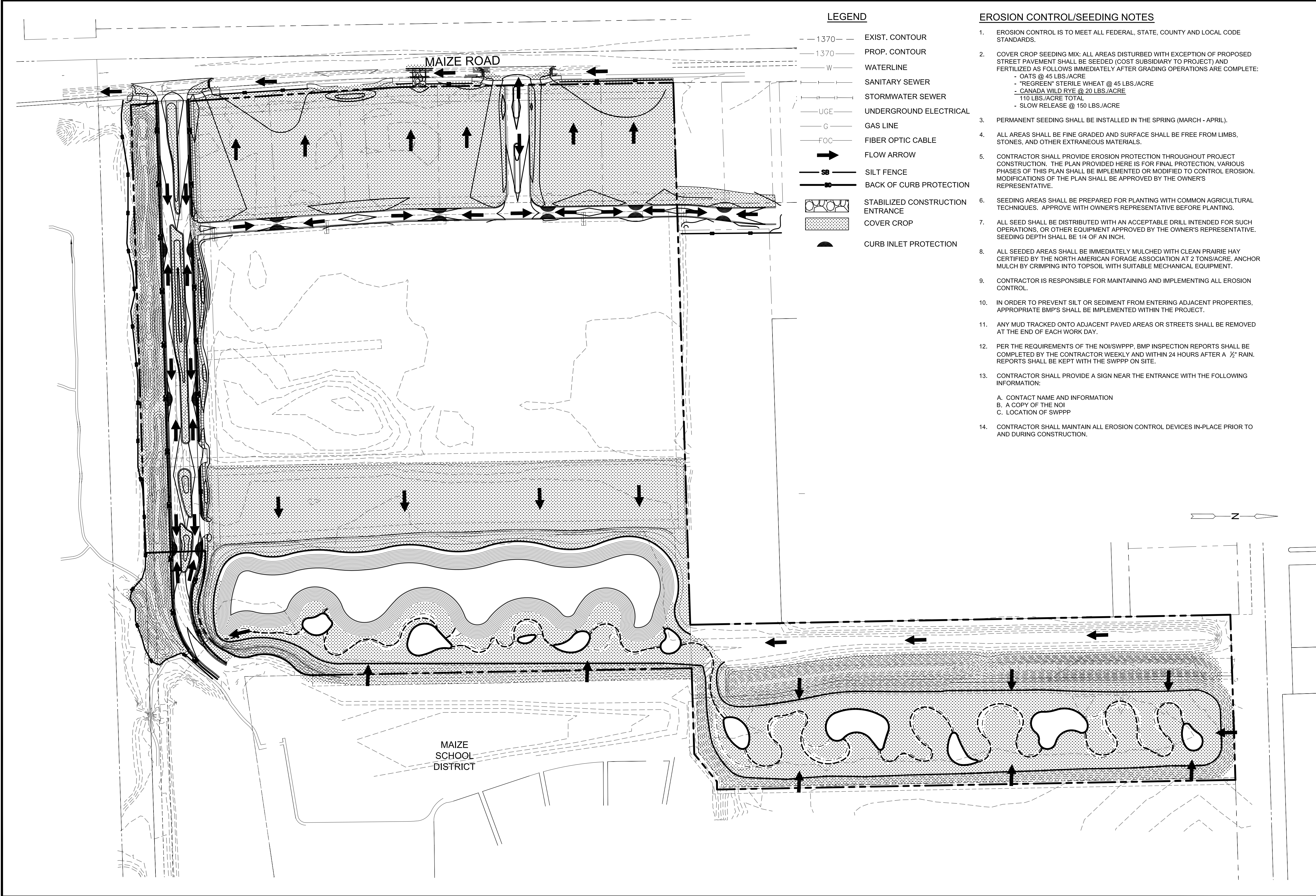
SHEET NO.

EROSION CONTROL/SEEDING NOTES

- EROSION CONTROL IS TO MEET ALL FEDERAL, STATE, COUNTY AND LOCAL CODE STANDARDS.
- COVER CROP SEEDING MIX: ALL AREAS DISTURBED WITH EXCEPTION OF PROPOSED STREET PAVEMENT SHALL BE SEEDED (COST SUBSIDIARY TO PROJECT) AND FERTILIZED AS FOLLOWS IMMEDIATELY AFTER GRADING OPERATIONS ARE COMPLETE:
 - OATS @ 45 LBS./ACRE
 - "REGREEN" STERILE WHEAT @ 45 LBS./ACRE
 - CANADA WILD RYE @ 20 LBS./ACRE
 - 110 LBS./ACRE TOTAL
 - SLOW RELEASE @ 150 LBS./ACRE
- PERMANENT SEEDING SHALL BE INSTALLED IN THE SPRING (MARCH - APRIL).
- ALL AREAS SHALL BE FINE GRADED AND SURFACE SHALL BE FREE FROM LIMBS, STONES, AND OTHER EXTRANEIOUS MATERIALS.
- CONTRACTOR SHALL PROVIDE EROSION PROTECTION THROUGHOUT PROJECT CONSTRUCTION. THE PLAN PROVIDED HERE IS FOR FINAL PROTECTION, VARIOUS PHASES OF THIS PLAN SHALL BE IMPLEMENTED OR MODIFIED TO CONTROL EROSION. MODIFICATIONS OF THE PLAN SHALL BE APPROVED BY THE OWNER'S REPRESENTATIVE.
- SEEDING AREAS SHALL BE PREPARED FOR PLANTING WITH COMMON AGRICULTURAL TECHNIQUES. APPROVE WITH OWNER'S REPRESENTATIVE BEFORE PLANTING.
- ALL SEED SHALL BE DISTRIBUTED WITH AN ACCEPTABLE DRILL INTENDED FOR SUCH OPERATIONS, OR OTHER EQUIPMENT APPROVED BY THE OWNER'S REPRESENTATIVE. SEEDING DEPTH SHALL BE 1/4 OF AN INCH.
- ALL SEEDED AREAS SHALL BE IMMEDIATELY MULCHED WITH CLEAN PRAIRIE HAY CERTIFIED BY THE NORTH AMERICAN FORAGE ASSOCIATION AT 2 TONS/ACRE. ANCHOR MULCH BY CRIMPING INTO TOPSOIL WITH SUITABLE MECHANICAL EQUIPMENT.
- CONTRACTOR IS RESPONSIBLE FOR MAINTAINING AND IMPLEMENTING ALL EROSION CONTROL.
- IN ORDER TO PREVENT SILT OR SEDIMENT FROM ENTERING ADJACENT PROPERTIES, APPROPRIATE BMP'S SHALL BE IMPLEMENTED WITHIN THE PROJECT.
- ANY MUD TRACKED ONTO ADJACENT PAVED AREAS OR STREETS SHALL BE REMOVED AT THE END OF EACH WORK DAY.
- PER THE REQUIREMENTS OF THE NOI/SWPPP, BMP INSPECTION REPORTS SHALL BE COMPLETED BY THE CONTRACTOR WEEKLY AND WITHIN 24 HOURS AFTER A 1/2" RAIN. REPORTS SHALL BE KEPT WITH THE SWPPP ON SITE.
- CONTRACTOR SHALL PROVIDE A SIGN NEAR THE ENTRANCE WITH THE FOLLOWING INFORMATION:
 - CONTACT NAME AND INFORMATION
 - A COPY OF THE NOI
 - LOCATION OF SWPPP
- CONTRACTOR SHALL MAINTAIN ALL EROSION CONTROL DEVICES IN-PLACE PRIOR TO AND DURING CONSTRUCTION.

LEGEND

- 1370-- EXIST. CONTOUR
- 1370- PROP. CONTOUR
- W WATERLINE
- SS SANITARY SEWER
- SS STORMWATER SEWER
- UGE UNDERGROUND ELECTRICAL
- G GAS LINE
- FOC FIBER OPTIC CABLE
- FLOW ARROW
- SS SILT FENCE
- BACK OF CURB PROTECTION
- STABILIZED CONSTRUCTION ENTRANCE
- COVER CROP
- CURB INLET PROTECTION



PLOTTED: Wednesday, July 22, 2015 @ 09:21AM
 J:\PROJECTS\2011\1010577 PREMIER FOX RIDGE PLAZA\CIVIL\CAD\GRD\11577_GR_DR_05.DWG