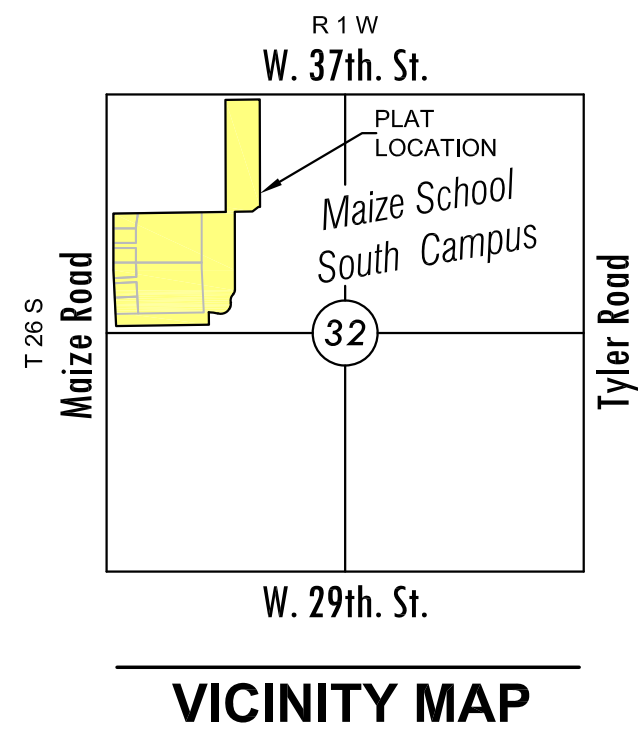


FINAL PLAT

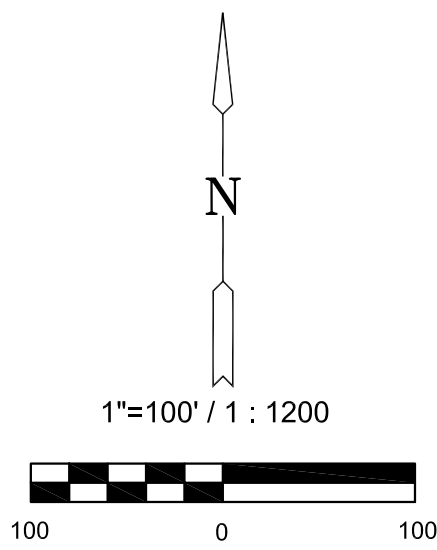
FOX RIDGE PLAZA ADDITION

AN ADDITION TO WICHITA, SEDGWICK COUNTY, KANSAS

A replat of a portion of Maize South School Campus Addition



VICINITY MAP



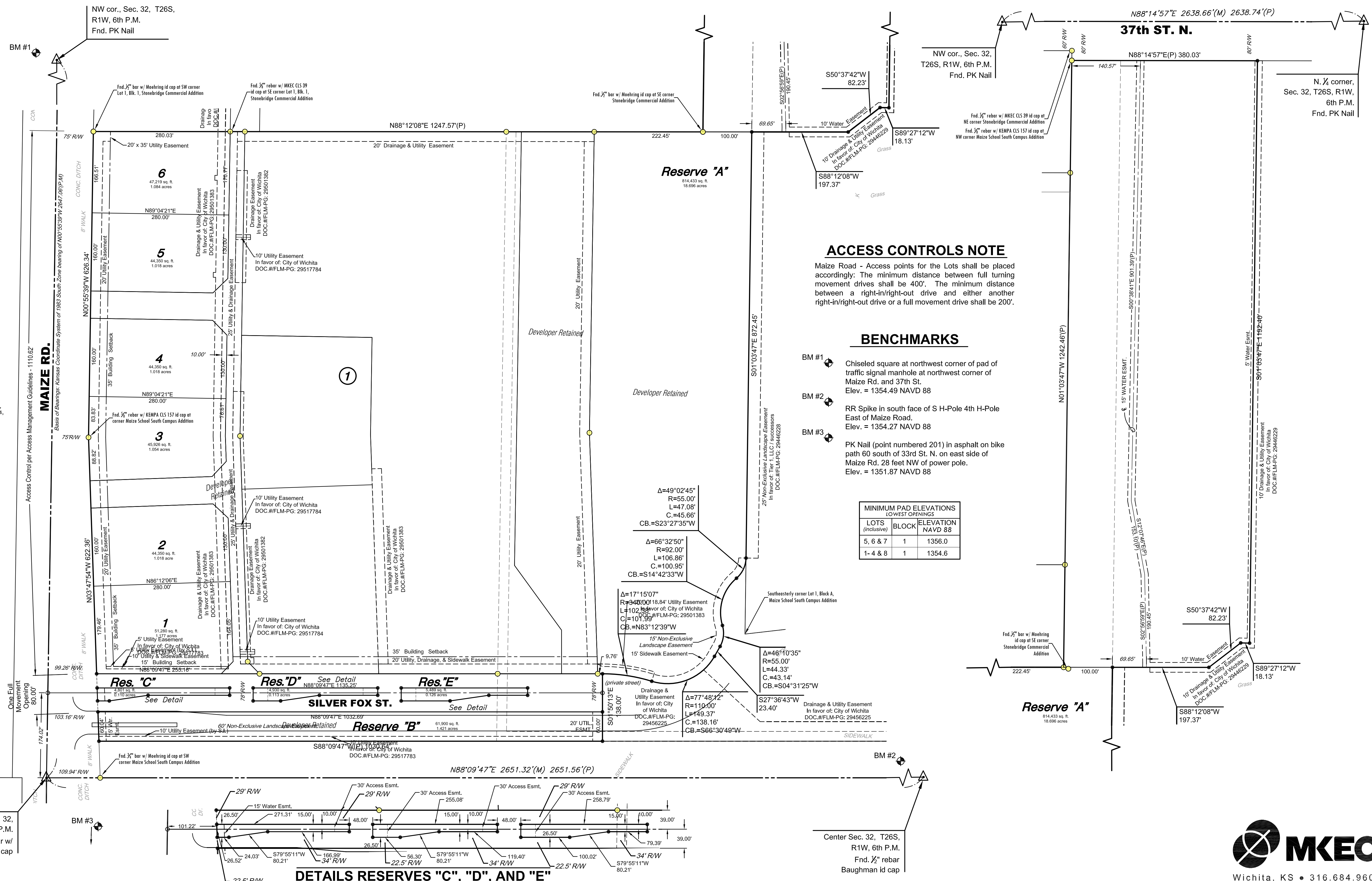
Basis of Bearing: Kansas coordinate system of 1983 south zone grid bearing of N00°55'39"W along the West line of the Northwest 1/4, Sec. 32, T26S, R1W, 6th P.M.

This plat is surveyed and platted on NAD83 using Kansas state plane south zone coordinates, modified to the surface, having a combined adjustment scale factor of 1.000120014

LEGEND

Date of Survey: Oct. 5th, 2011

- = Section corner monument found
- = Found see annotation
- = Set 3/4" rebar w/ MKEC
- = CLS 39 id. cap
- (M) = Measured
- (P) = Platted



ACCESS CONTROLS NOTE

Maize Road - Access points for the Lots shall be placed accordingly. The minimum distance between full turning movement drives shall be 400'. The minimum distance between a right-in/right-out drive and either another right-in/right-out drive or a full movement drive shall be 200'.

BENCHMARKS

- BM #1**
Chiseled square at northwest corner of pad of traffic signal manhole at northwest corner of Maize Rd. and 37th St.
Elev. = 1354.49 NAVD 88
- BM #2**
RR Spike in south face of S H-Pole 4th H-Pole East of Maize Road.
Elev. = 1354.27 NAVD 88
- BM #3**
PK Nail (point numbered 201) in asphalt on bike path 60 south of 33rd St. N. on east side of Maize Rd. 28 feet NW of power pole.
Elev. = 1351.87 NAVD 88

MINIMUM PAD ELEVATIONS LOWEST OPENINGS		
LOTS (inclusive)	BLOCK	ELEVATION NAVD 88
5, 6 & 7	1	1356.0
1-4 & 8	1	1354.6

DETAILS RESERVES "C", "D", AND "E"

