

ARMOUR BIKE BLVD.

Douglas Street to E. 32nd Street North
 KDOT Project #87 TE-0623-01
 City Project No. 472-85111
 City OCA No. 707054
 Federal Aid Project TA-T062(301)

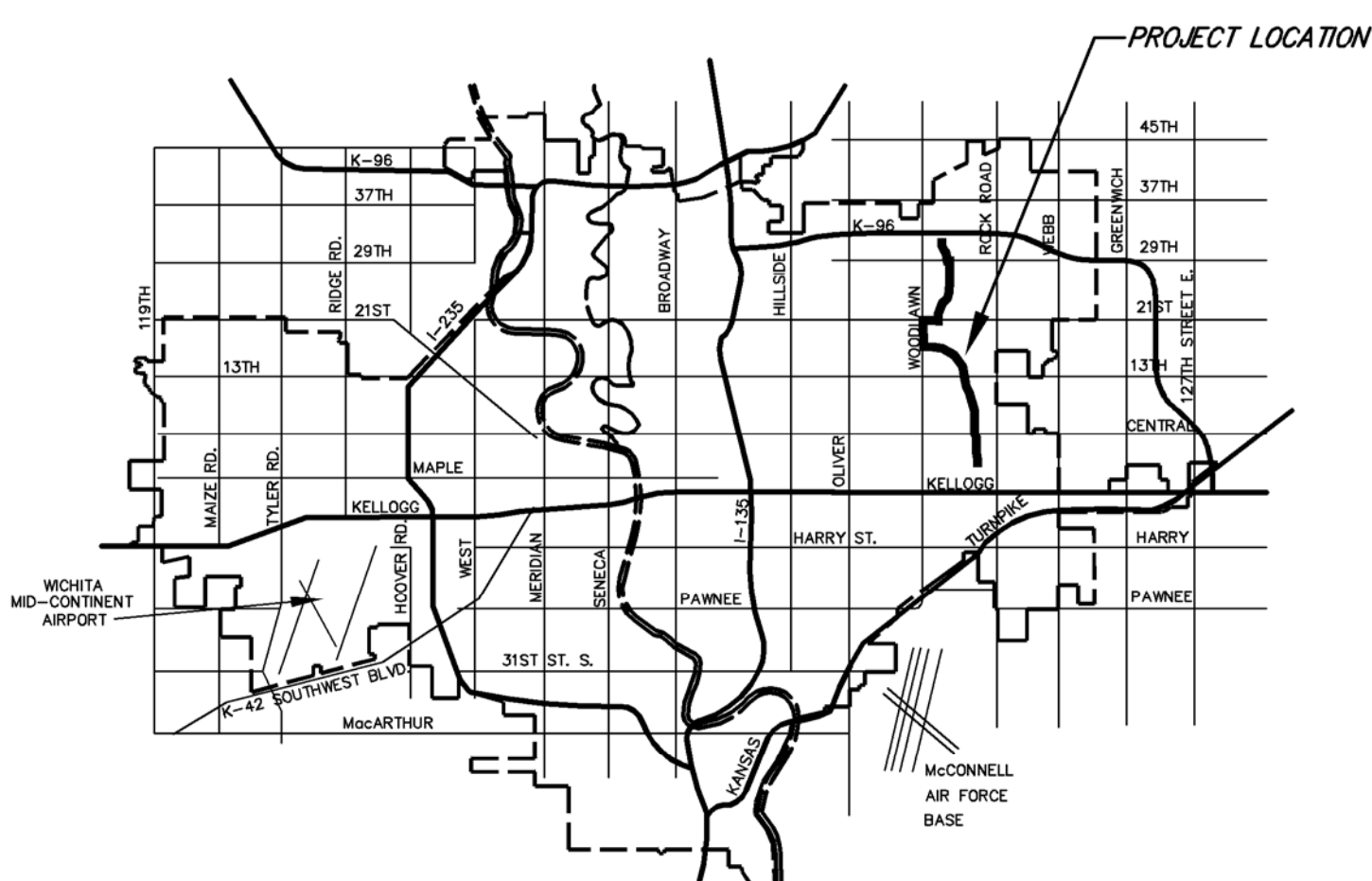
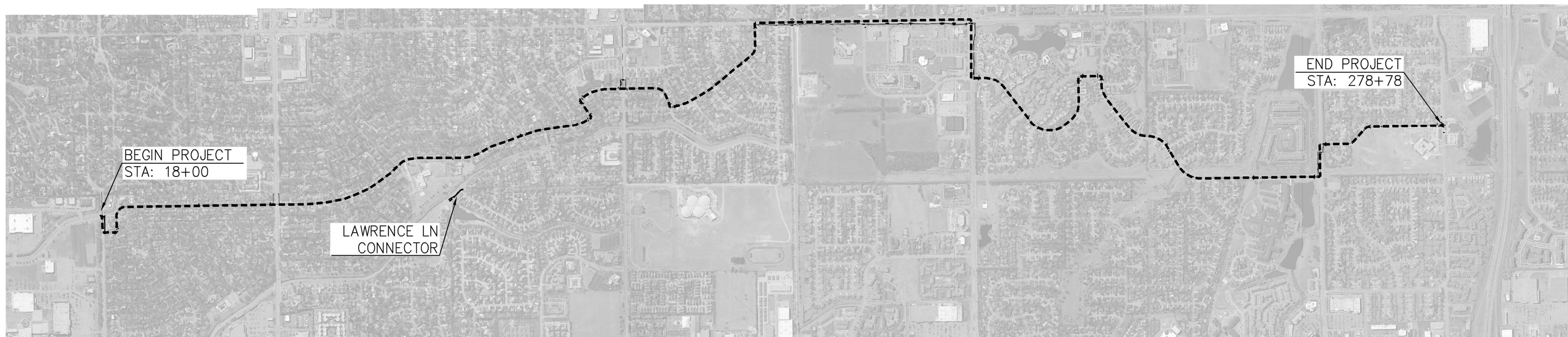
STRIPING
 SIGNAGE
 SURFACE CONCRETE
 TRAFFIC CONTROL
 EROSION CONTROL

INDEX OF SHEETS

1	TITLE SHEET
2	GENERAL NOTES
3-21	PLANS
22	STANDARD PAVING DETAILS
23	ACCESSIBLE RAMP DETAILS
24	AUXILIARY WALK DETAILS
25	WOODLAWN DRIVEWAY REPLACEMENT PLANS
26	STANDARD DRIVEWAY DETAILS
27	PAVEMENT MARKING DETAILS
28	SIGNAGE DETAILS
29	RECTANGULAR RAPID FLASH BEACON DETAILS
30	PEDESTRIAN SIGNAL MODIFICATION DETAILS
31-33	EROSION CONTROL DETAILS
34	TRAFFIC CONTROL DETAILS
35	RECAPITULATION OF QUANTITIES

DESIGN DETAILS

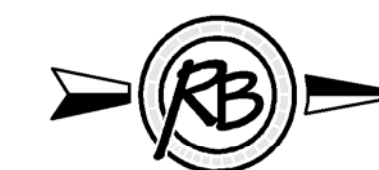
- Length of Project: 4.9 miles
- Design Speed: 20mph
- Begin Project STA: 18+00
- End Project STA: 278+78



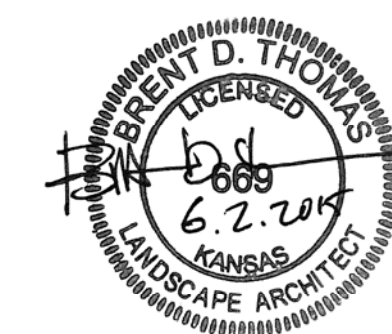
VICINITY MAP

City of Wichita, Kansas
 Department of Public Works & Utilities
 455 North Main, 8th Floor
 Wichita, Kansas 67202

CITY OF WICHITA, KANSAS
 GARY JANZEN, P.E., CITY ENGINEER



SCALE: 1"=750'



ENGINEERING | SURVEYING | LANDSCAPE ARCHITECTURE | GOVERNMENT

924 NORTH MAIN WICHITA, KANSAS 67203 P (316) 264-8008 F (316) 264-4621
 WWW.RBKANSAS.COM