

STATE	PROJECT NO.	YEAR	SHEET NO.	TOTAL SHEETS
KANSAS	87 TE-0623-01	2014	28	35

BICYCLE TRAFFIC CONTROL SIGNS & SIGN POSTS													
STATION	LOCATION FROM BL.	SIGN TYPE										SIGN POST LENGTH BREAKAWAY LENGTH 1 3/4" x 1 3/4" x VARIES	
		D11-1	M4-11	M4-12	M4-13	M7-1R	M7-1L	M7-2	M7-5	W11-15	W16-9P		W16-7PL
17+33	RT.	2	1										
17+43	LT.	1		1	1		1						
17+66	LT.	1	1			1							
20+35	RT.	1					1						
20+84	LT.	1						1					
21+90	RT.	1							1				
21+90	LT.	1											
22+78	RT.	1											
23+00	LT.	1							1				
38+06	LT.	1											
38+84	RT.	1											
49+00	LT.	1											
50+75	RT.	1											
69+42	LT.	1											
70+40	RT.	1											
77+86	LT.	1											
78+75	RT.	1											
89+82	LT.	1											
90+50	RT.	1											
100+40	RT.	1											
100+49	LT.	1											
101+61	RT.	1											
102+09	LT.	1											
103+53	RT.	1											
103+88	LT.	1											
104+78	RT.	1											
104+98	LT.	1											
110+65	LT.	1											
111+96	RT.	1											
119+93	RT.	1											
119+93	LT.	1											
121+04	RT.	1											
121+44	LT.	1											
133+45	LT.	1											
134+27	RT.	1											
139+65	RT.	1											
139+65	LT.	1											
141+04	RT.	2											
145+02	RT.	1											
146+04	RT.	2											
146+25	RT.	2											
147+60	LT.	1											
156+18	RT.	1											
156+44	RT.	1											
157+32	RT.	1											
157+86	RT.	1											
172+53	RT.	2											
173+97	LT.	2											
181+60	LT.	2											
183+38	RT.	1											
183+45	LT.	1											
193+53	LT.	1											
195+78	RT.	1											
207+73	RT.	1											
207+73	LT.	1											
209+02	RT.	1											
209+08	LT.	1											
211+35	RT.	1											
211+35	LT.	1											
212+59	RT.	1											
212+59	LT.	1											
227+68	LT.	1											
228+68	RT.	1											
243+52	RT.	1											
243+52	LT.	1											
252+78	RT.	1											
252+78	LT.	1											
259+57	RT.	1											
259+57	LT.	1											
267+42	RT.	1											
267+42	LT.	1											
277+59	LT.	1	1										
277+85	RT.	1		1									
278+26	LT.									1	1		
278+26	LT.									1	1		
278+60	RT.									1	1		
278+60	RT.									1	1		
278+64	LT.	2											
278+76	LT.	1											
TOTAL		79	3	2	1	13	15	2	3	6	4	2	2
		D11-1	M4-11	M4-12	M4-13	M7-1R	M7-1L	M7-2	M7-5	W11-15	W16-9P	W16-7PL	R10-15R

SIGN DESCRIPTION				
CLASS	TYPE	PROCESS	SIZE	AREA
D11-1	BIKE ROUTE	REV. SCREEN	24" x 24"	4.0 sq. ft.
D3-1	BIKE ROUTE NAME PLAQUE	REV. SCREEN	24" x 6"	1.0 sq. ft.
M4-11	"BEGIN" PLAQUE	REV. SCREEN	12" x 4"	0.33 sq. ft.
M4-12	"END" PLAQUE	REV. SCREEN	12" x 4"	0.33 sq. ft.
M4-13	"TO" PLAQUE	REV. SCREEN	12" x 4"	0.33 sq. ft.
M7-1R	RIGHT ARROW PLAQUE	REV. SCREEN	12" x 9"	0.75 sq. ft.
M7-1L	LEFT ARROW PLAQUE	REV. SCREEN	12" x 9"	0.75 sq. ft.
M7-2	UP (STRAIGHT) ARROW PLAQUE	REV. SCREEN	12" x 9"	0.75 sq. ft.
M7-5	LEFT AND RIGHT ARROW PLAQUE	REV. SCREEN	12" x 9"	0.75 sq. ft.
R10-15R	TURNING VEHICLES YIELD TO BIKES	REV. SCREEN	30" x 30"	6.25 sq. ft.
W11-15	BICYCLE / PEDESTRIAN WARNING	REV. SCREEN	24" x 24"	4.0 sq. ft.
W16-9P	"AHEAD" PLAQUE	REV. SCREEN	24" x 12"	2.0 sq. ft.
W16-7PL	LEFT DOWNWARD DIAGONAL ARROW PLAQUE	REV. SCREEN	24" x 12"	2.0 sq. ft.

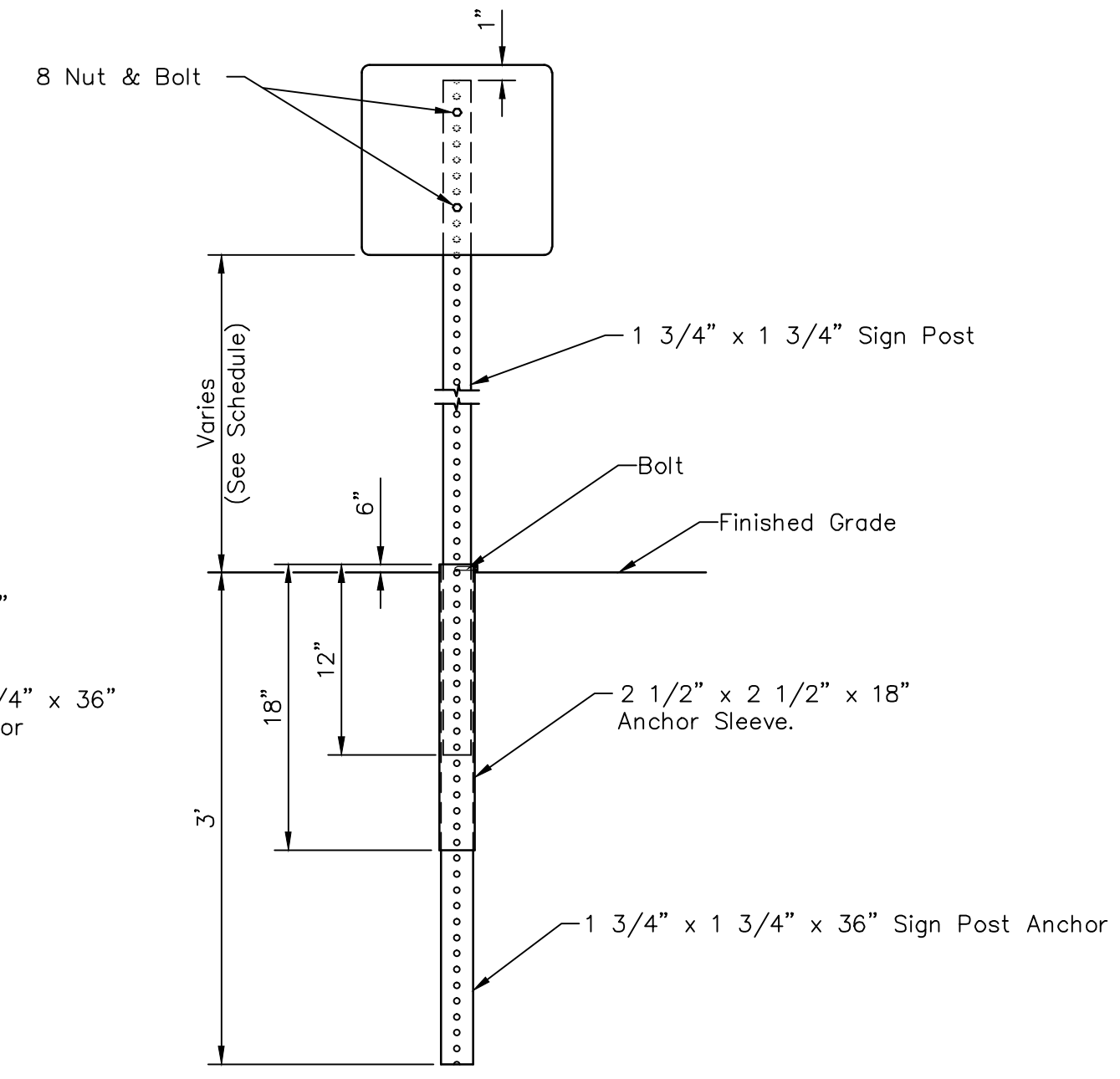
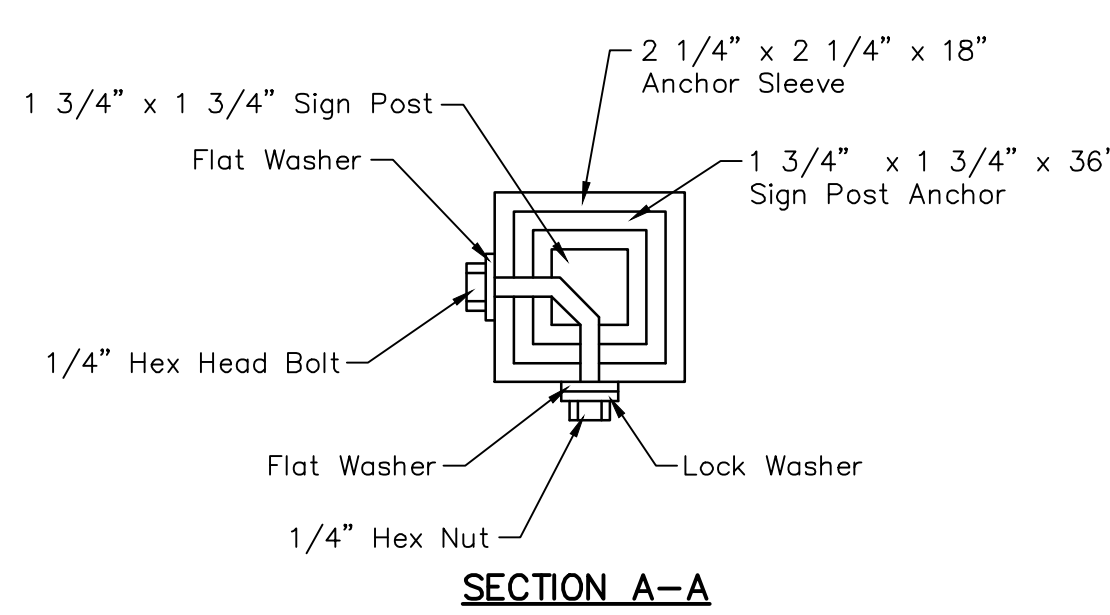
SIGN POST LENGTH SUMMARY	
BREAKAWAY SIGN POST: 1 3/4" x 1 3/4" x VARIES	TOTAL # POSTS
9'-0"	40
9'-3"	2
9'-6"	2
9'-9"	26
10'-0"	7
11'-0"	1
12'-0"	1

PAVEMENT INSTALLATION SEQUENCE

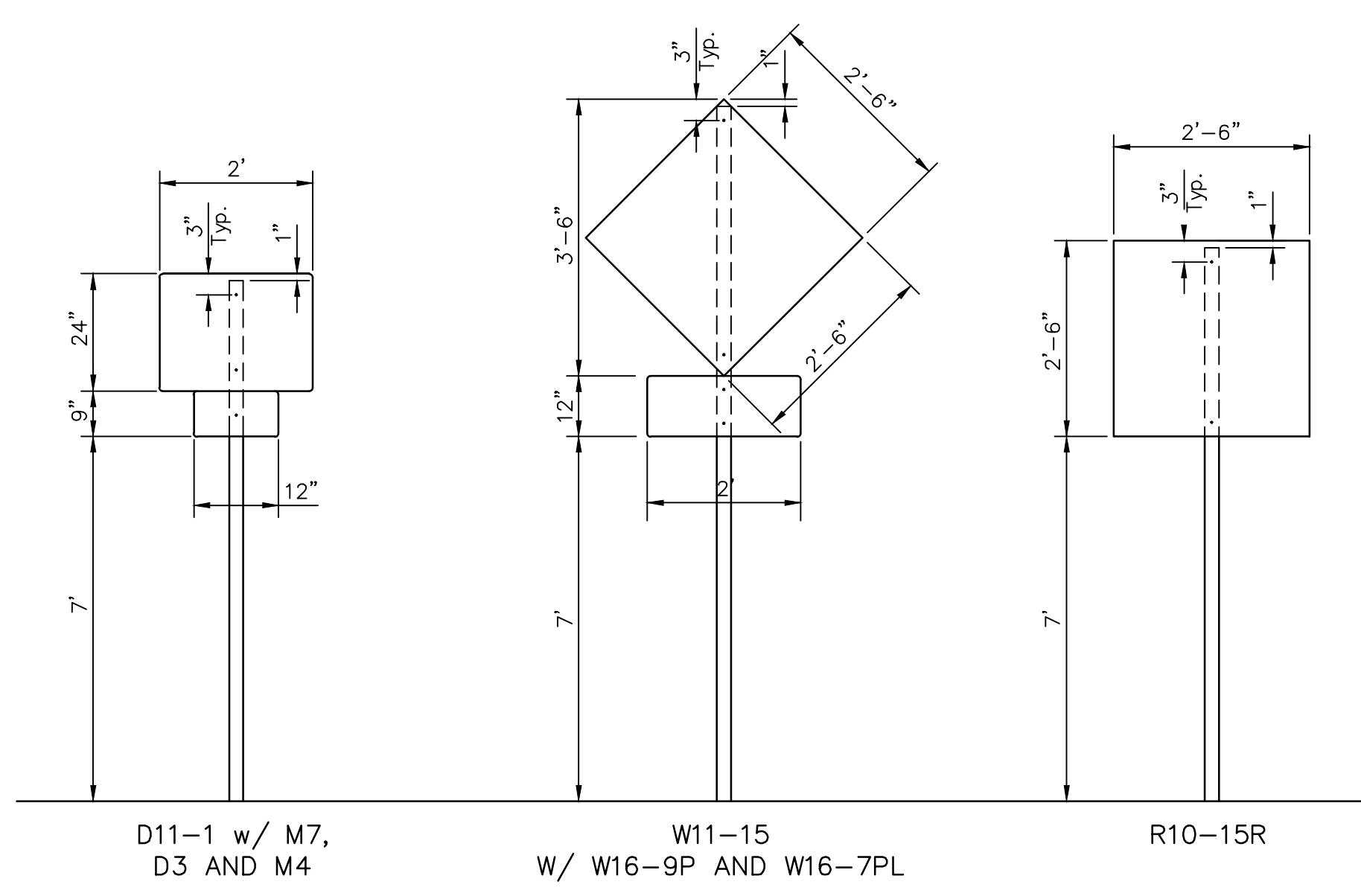
- SIGN POST ANCHOR DRIVEN INTO SUBGRADE PRIOR TO THE PLACEMENT OF THE PAVEMENT.
- ANCHOR SLEEVE DRIVEN INTO SUBGRADE OVER THE SIGN POST ANCHOR PRIOR TO THE PLACEMENT OF THE PAVEMENT
- INSERT SIGN POST INTO THE SIGN POST ANCHOR AND BOLT IN PLACE.

GROUND INSTALLATION SEQUENCE

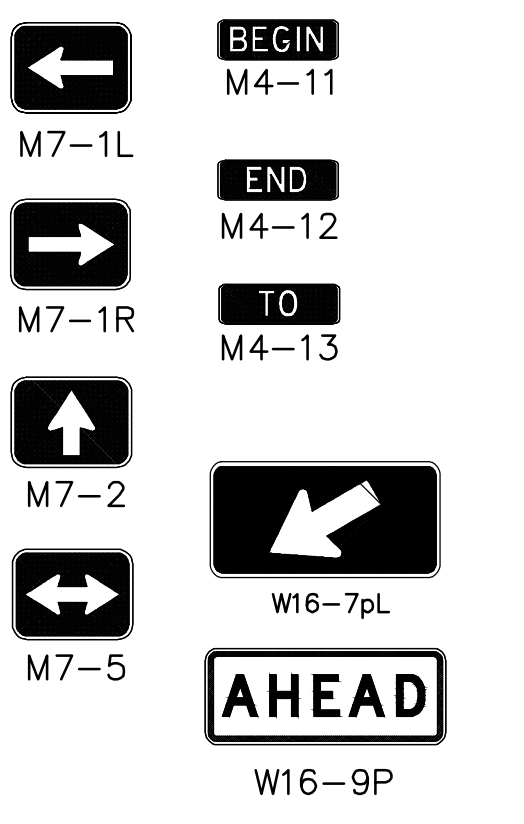
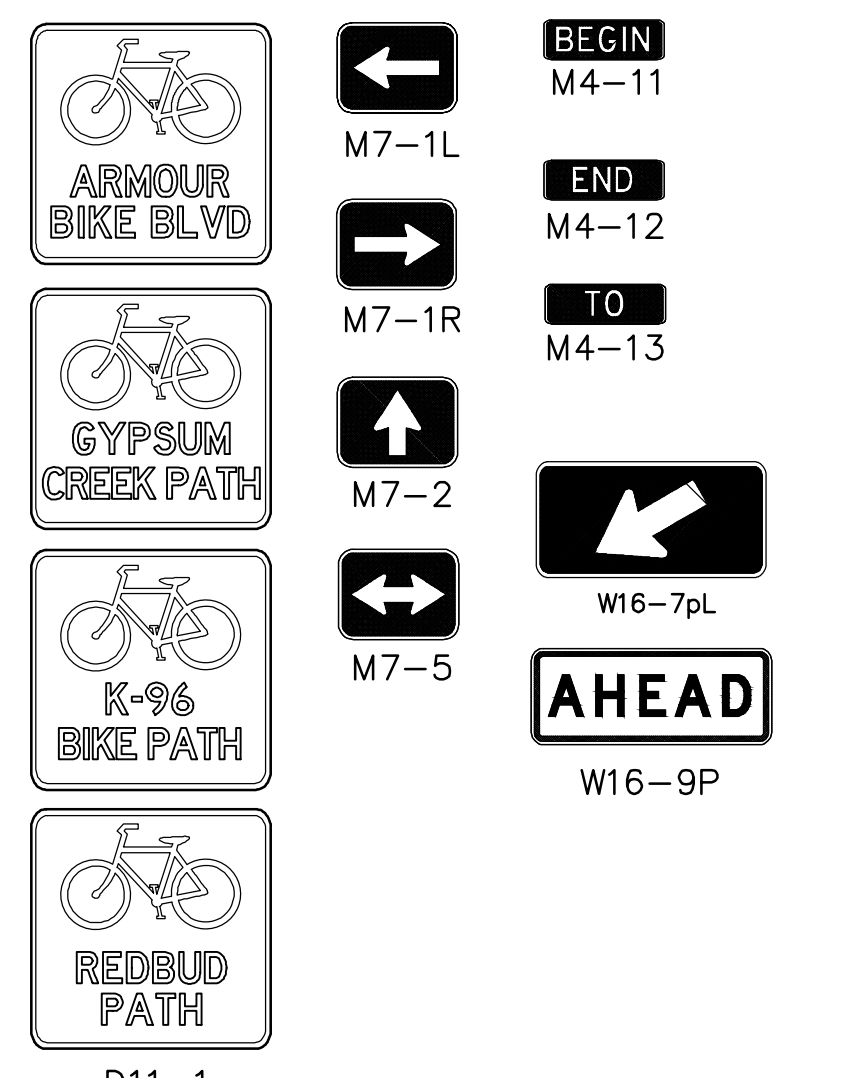
- SIGN POST ANCHOR DRIVEN INTO GROUND
- ANCHOR SLEEVE DRIVEN INTO THE GROUND OVER THE SIGN POST ANCHOR.
- INSERT SIGN POST INTO THE SIGN POST ANCHOR AND BOLT IN PLACE.



BREAK-AWAY SIGN POST DETAIL



BIKE SIGN MOUNTING DETAILS
(SEE NOTE #5)



- NOTES:**
- IN ALL INSTALLATIONS THE FIRST HOLE ABOVE THE FINISHED GRADE LEVEL IN ALL THREE UNITS MUST BE IN LINE FOR INSERTION OF THE BOLT. ALL BOLTS AND NUTS FOR FASTENING THE SIGNS AND SIGN
 - POST ASSEMBLY SHALL COMPLY WITH SECTION 1614 AND ALL WASHERS SHALL COMPLY WITH SECTION 1614 OF THE STANDARD SPECIFICATIONS FOR STATE ROAD AND BRIDGE CONSTRUCTION (1980 EDITION) AND SHALL BE SUBSIDIARY ITEM. ALL LETTER, NUMBER & SYMBOL SIZES, SPACING & COLORS
 - AND SIGN COLORS SHALL CONFORM TO THE CURRENT "MANUAL ON UNIFORM TRAFFIC CONTROL DEVICES."
 - ALL SIGN MATERIALS TO BE 0.080" ALUMINUM.
 - VEHICLE TRAFFIC CONTROL SIGN DIMENSIONS AND MOUNTING HEIGHT SHALL CONFORM TO THE CURRENT "MUTCD".
 - ALL SIGN FACES TO CLEAR EDGE OF ROADWAY BY 3'.

RUGGLES & BOHM
ENGINEERS ARCHITECTS SURVEYORS
1001 W. 12TH ST., SUITE 100, WICHITA, KS 67202
PH: 316.261.1234 FAX: 316.261.1235

DESIGN: BT/DK
DRAWN: DK
CHECKED: []
DATE: SEPT 2014

REVIEW: []
DATE: SEPT 2014

PROJECT NUMBER: 472-2011
DRAWING FILE: []
Detail Sheets: {28-...}

SIGNAGE DETAILS
ARMOUR BIKE BOULEVARD
WICHITA, KANSAS

RB JOB 4181H
SHEET 28 OF 35
© Copyright 2013, Ruggles & Bohm, P.A.