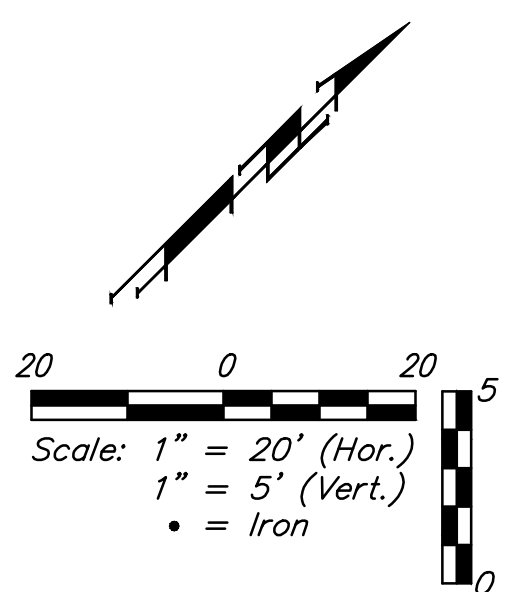
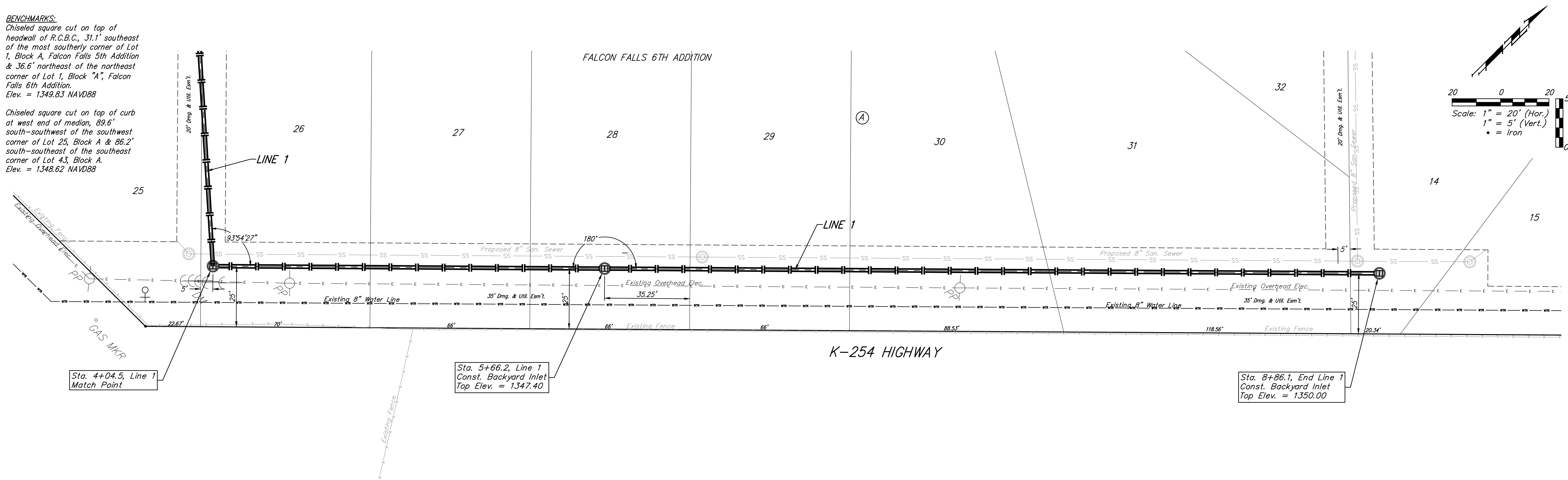


BENCHMARKS:
 Chiseled square cut on top of headwall of R.C.B.C., 31.1' southeast of the most southerly corner of Lot 1, Block A, Falcon Falls 5th Addition & 36.6' northeast of the northeast corner of Lot 1, Block "A", Falcon Falls 6th Addition.
 Elev. = 1349.83 NAVD88

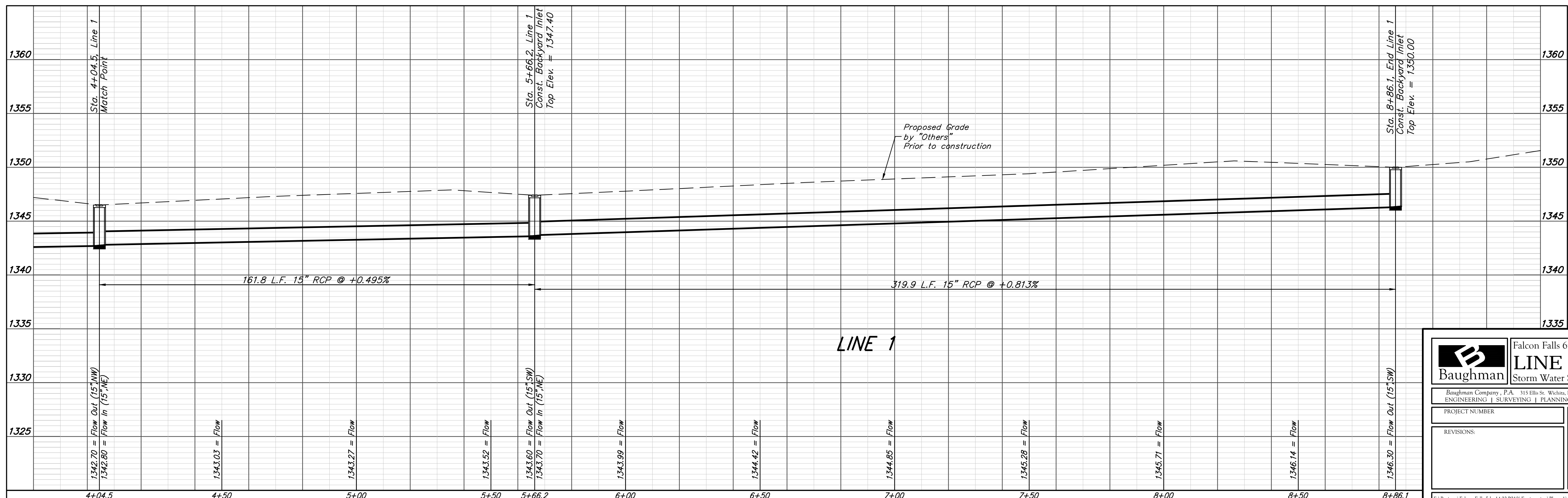
Chiseled square cut on top of curb at west end of median, 89.6' south-southwest of the southwest corner of Lot 25, Block A & 86.2' south-southeast of the southeast corner of Lot 43, Block A.
 Elev. = 1348.62 NAVD88



Sta. 4+04.5, Line 1
Match Point

Sta. 5+66.2, Line 1
Const. Backyard Inlet
Top Elev. = 1347.40

Sta. 8+86.1, End Line 1
Const. Backyard Inlet
Top Elev. = 1350.00



Baughman		Falcon Falls 6th Addition - Phase I	
		LINE 1	
		Storm Water Sewer Improvements	
Baughman Company, P.A. 315 Ellis St. Wichita, KS 67211 P 316-262-7271 F 316-262-0149			
ENGINEERING SURVEYING PLANNING LANDSCAPE ARCHITECTURE			
PROJECT NUMBER	DESIGN	DRAWN	
	AEG	JAK	
REVISIONS:	APPROVED	DATE	
		7/15	
	SCALE	Noted	
	SHEET		
		10 OF 24	