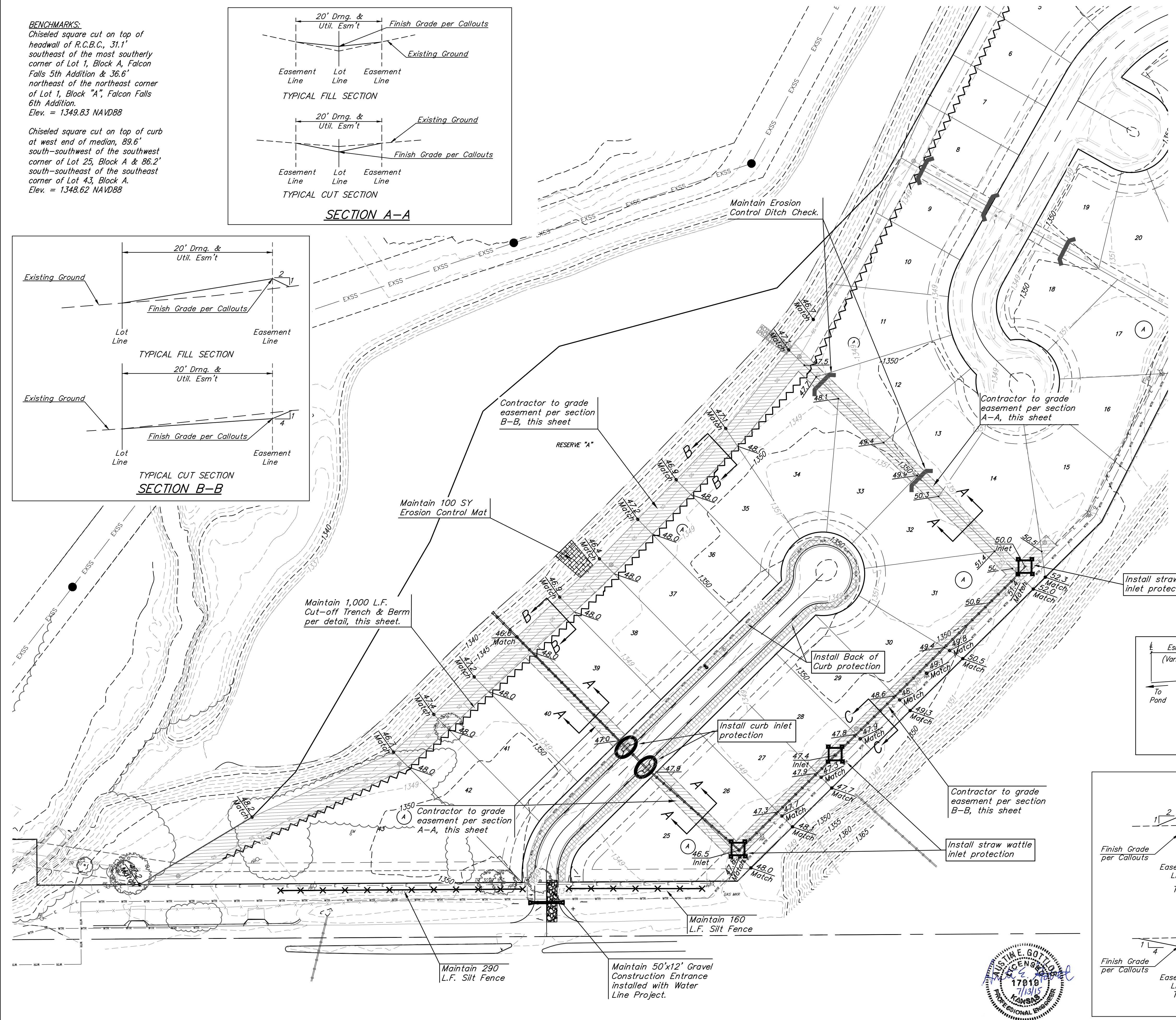
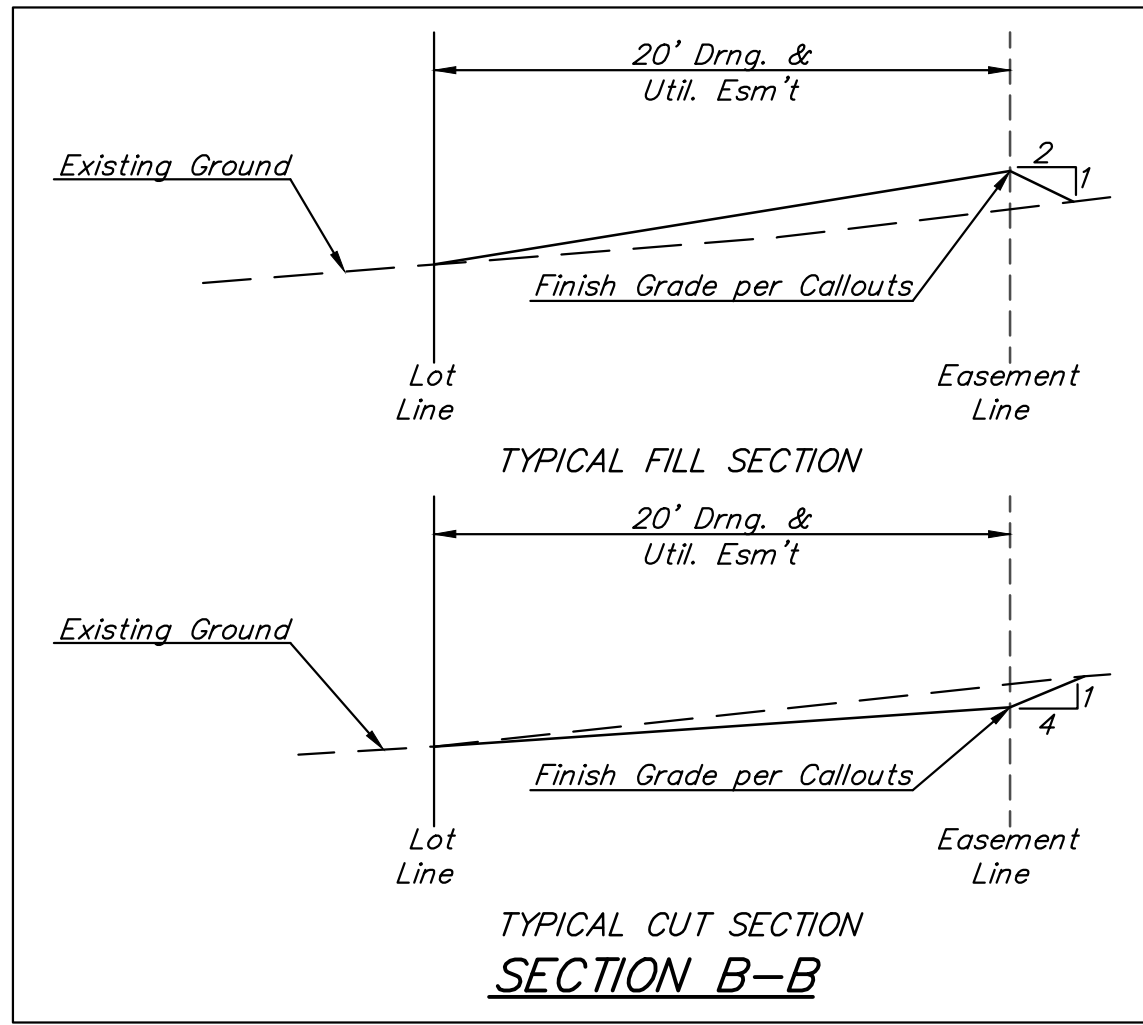
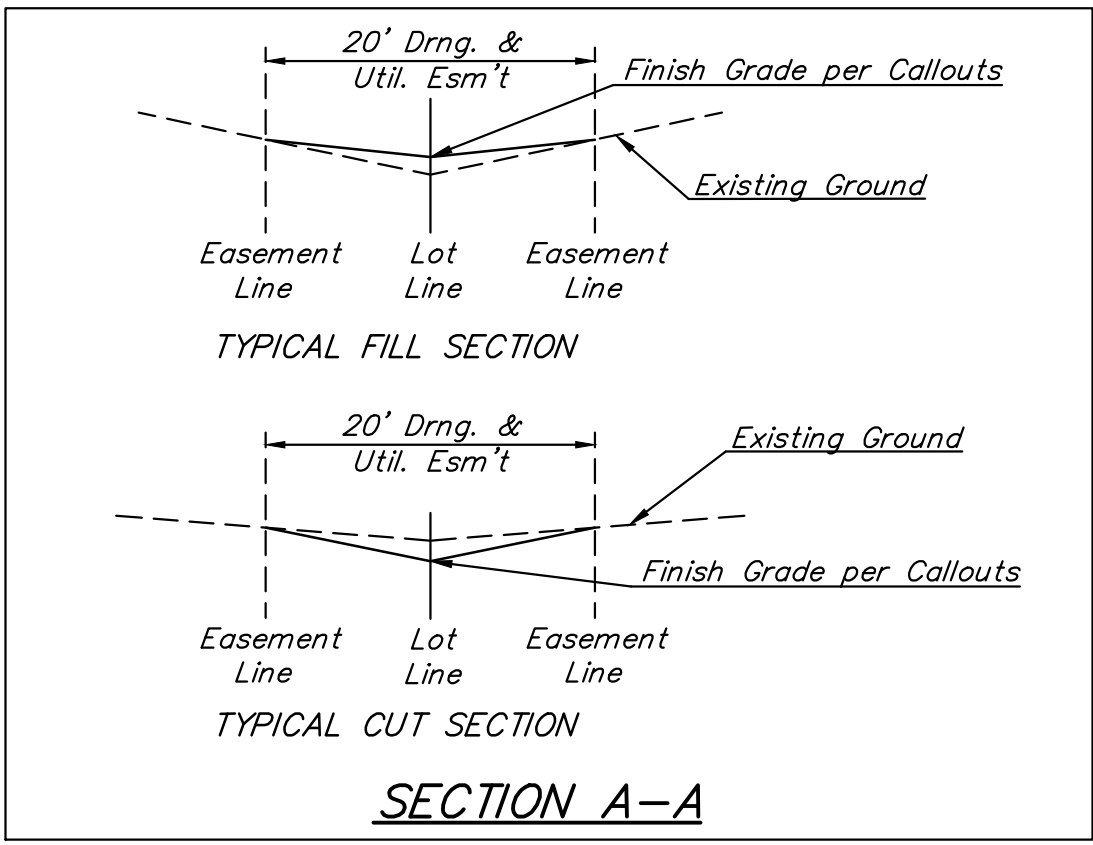


**BENCHMARKS:**  
 Chiseled square cut on top of headwall of R.C.B.C., 31.1' southeast of the most southerly corner of Lot 1, Block A, Falcon Falls 5th Addition & 36.6' northeast of the northeast corner of Lot 1, Block "A", Falcon Falls 6th Addition.  
 Elev. = 1349.83 NAVD88

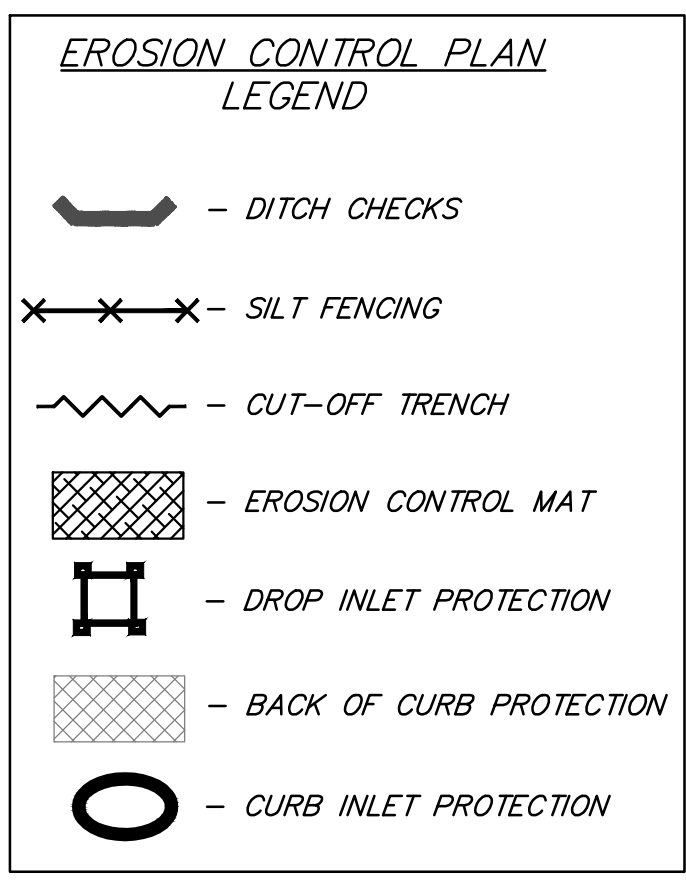
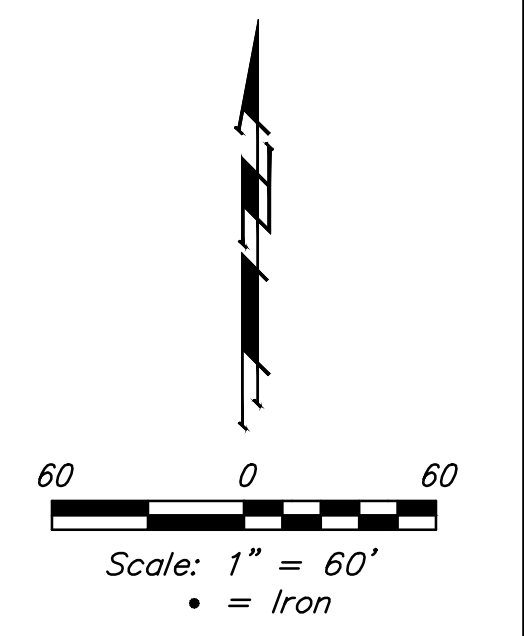
Chiseled square cut on top of curb at west end of median, 89.6' south-southwest of the southwest corner of Lot 25, Block A & 86.2' south-southeast of the southeast corner of Lot 43, Block A.  
 Elev. = 1348.62 NAVD88



---1364--- Existing Ground

**NOTES:**  
 Contractor shall make sure all erosion control is in place before project is accepted. This plan represents the minimum standard. Any additional erosion control measures shall be installed by the Contractor as needed.

All areas disturbed during construction shall be seeded, mulched, and fertilized as per Cover Sheet General Notes.



= Easements To Be Graded

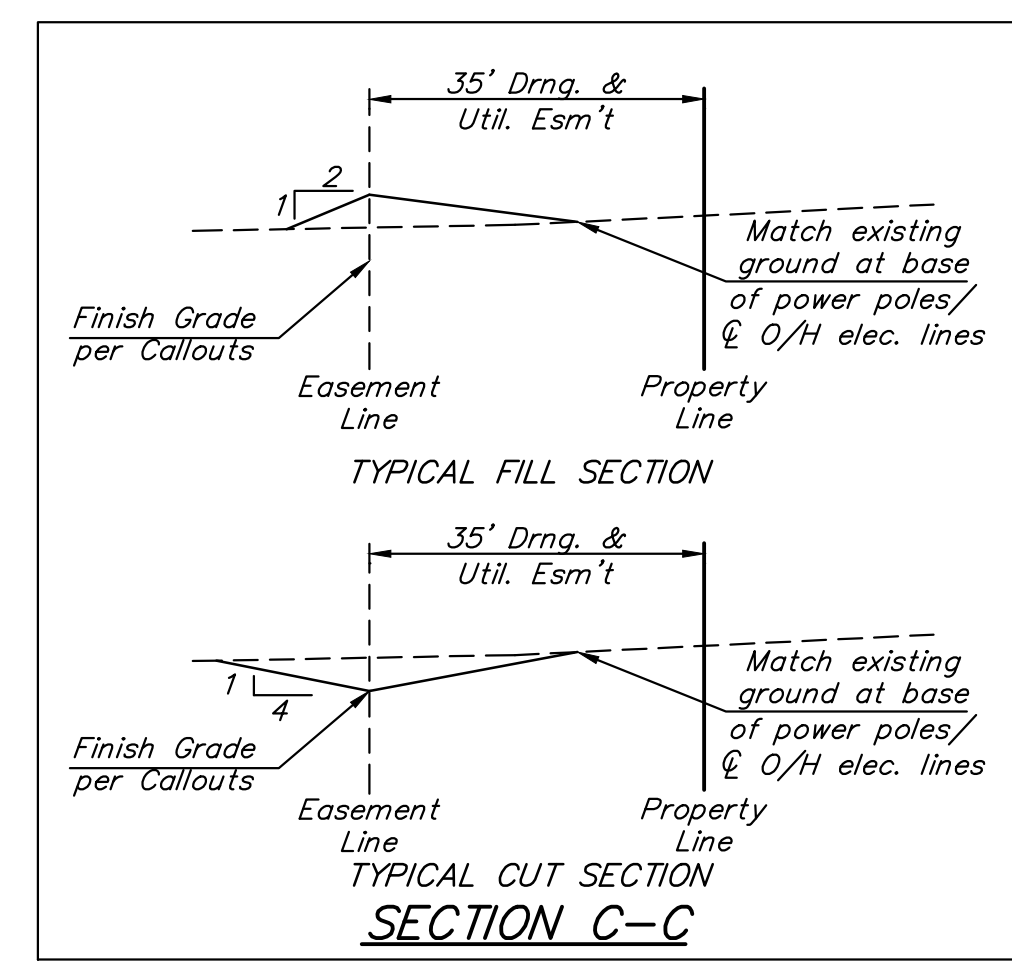
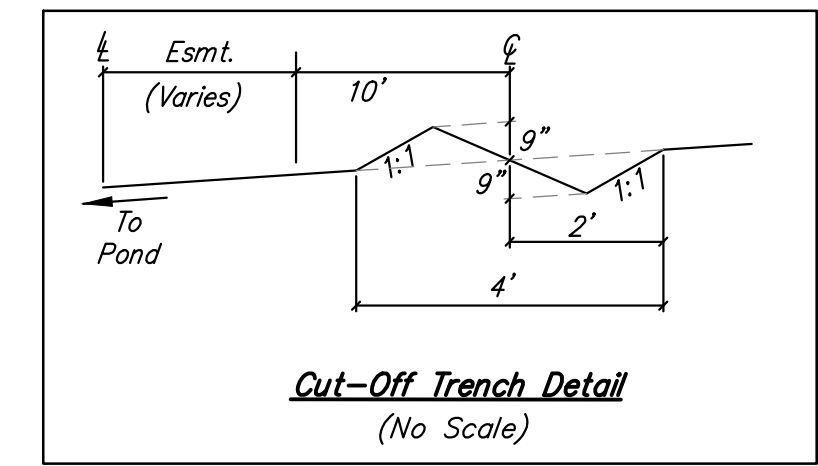
All Easements have been previously graded as part of the Storm Water Drain Project. The Contractor of this project shall fine grade the Easements as indicated to the elevations given on this plan.

The Contractor shall grade the easements as shown to the elevations given on the easement grading plan.

The Contractor shall 'straight' grade the easements between the elevations given. Where a callout designates 'Match', the Contractor will grade to the existing ground elevation.

Excess excavation from easement grading and from sanitary sewer construction shall be placed on the lots as indicated to the elevations shown.

All cost to be included in the Lump Sum bid item "Easement Grading"



EROSION CONTROL MEASURE	INSTALL	MAINTAIN
BACK OF CURB PROTECTION (LF)	1,132	
CONSTRUCTION ENTRANCE (EA)		1
CURB INLET BARRIER (EA)	2	
DITCH CHECK (EA)		5
DROP INLET PROTECTION (EA)	3	
EROSION CONTROL BERM (LF)		1,750
SILT FENCE (LF)		360
EROSION CONTROL MAT (SY)		200
MAINTAIN EROSION CONTROL BMP's (LS)		1

\* All existing BMPs including Construction Entrance, Sediment Barriers, Silt Fence, Cut-off Trench, and Erosion Control Mat shall be maintained and repaired if necessary.

**Baughman** Falcon Falls 6th Addition - Phase I  
**Mass Grading & Erosion Control Street Improvements**

Baughman Company, P.A. 315 Ellis St. Wichita, KS 67211 P 316-262-7271 F 316-262-0149  
 ENGINEERING | SURVEYING | PLANNING | LANDSCAPE ARCHITECTURE

PROJECT NUMBER: 468-85186  
 REVISIONS:

DESIGN: AEG  
 DRAWN: JAK  
 APPROVED: [Signature]  
 DATE: 7/06/15

SCALE: Noted  
 SHEET: 22 OF 24

