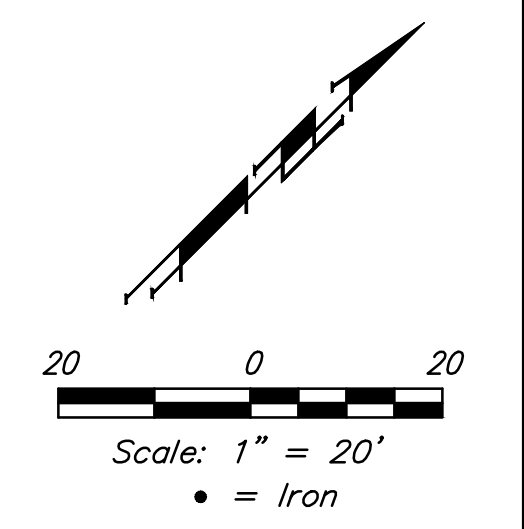
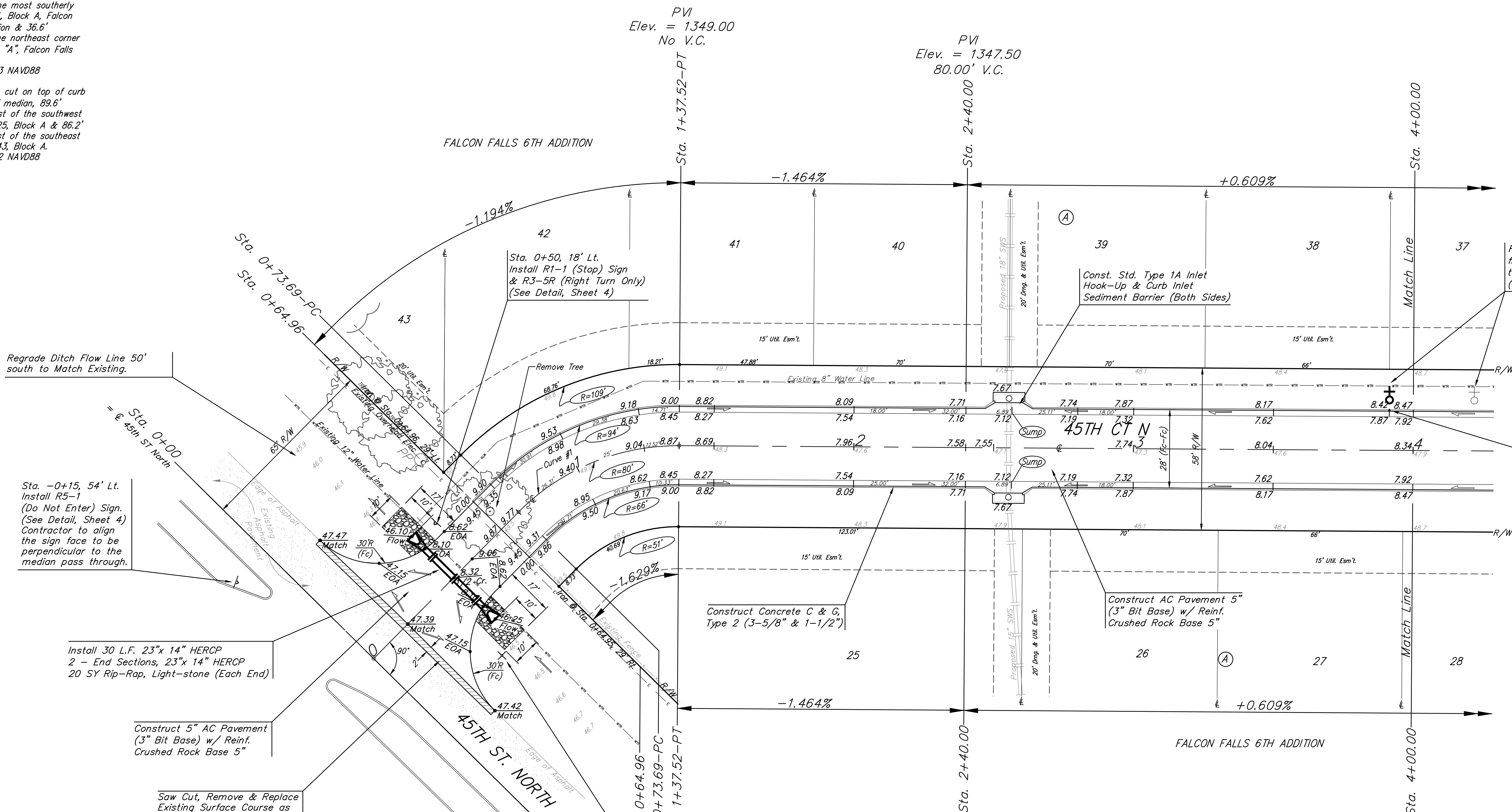


**BENCHMARKS:**  
 Chiseled square cut on top of headwall of R.C.B.C., 31.1' southeast of the most southerly corner of Lot 1, Block A, Falcon Falls 5th Addition & 36.6' northeast of the northeast corner of Lot 1, Block "A", Falcon Falls 6th Addition.  
 Elev. = 1349.83 NAVD88

Chiseled square cut on top of curb at west end of median, 89.6' south-southwest of the southwest corner of Lot 25, Block A & 86.2' south-southeast of the southeast corner of Lot 43, Block A.  
 Elev. = 1348.62 NAVD88



FALCON FALLS 6TH ADDITION



Regrade Ditch Flow Line 50' south to Match Existing.

Sta. -0+15, 54' Lt. Install R5-1 (Do Not Enter) Sign. (See Detail, Sheet 4) Contractor to align the sign face to be perpendicular to the median pass through.

Install 30 L.F. 23"x 14" HERCP 2 - End Sections, 23"x 14" HERCP 20 SY Rip-Rap, Light-stone (Each End)

Construct 5" AC Pavement (3" Bit Base) w/ Reinf. Crushed Rock Base 5"

Saw Cut, Remove & Replace Existing Surface Course as Indicated. Cost shall be incidental to pavement cost.

Sta. 0+50, 18' Lt. Install R1-1 (Stop) Sign & R3-5R (Right Turn Only) (See Detail, Sheet 4)

PVI Elev. = 1349.10 No V.C.

PVI Elev. = 1347.50 80.00' V.C.

Relocate Existing Fire Hydrant from Sta. 4+21.76, 23.00' Lt. to Sta. 3+91.39, 23.00' Lt. (See Sheet, 11)

Sta. 3+91.39, 14.25' Lt. Install subdivision benchmark (Flat survey marker No. 8134-08 3" top diameter) in top of curb. Cost shall be incidental to L.F. curb & gutter.

Construct Concrete C & G, Type 2 (3-5/8" & 1-1/2")

Construct AC Pavement 5" (3" Bit Base) w/ Reinf. Crushed Rock Base 5"

Sta. 0+33, 32' Rt. Install Metro (SNS) Ass'y per City Specs. " 45th Street " & " 45th Ct " (See Detail, Sheet 4)

Curve #1  
 Curve Data Based on Centerline  
 Rad. = 80' Delta = 45°42'46" Tangent = 33.72'  
 Arc = 63.83' L.C. = 62.15' Def./Ft. = 21.48493 Min.

Station	Arc	Face Chord Lengths		Defl.	Total Defl.
		8' Left	8' Right		
0+73.69	-	-	-	0'00"00"	0'00"00"
0+75.00	1.31'	1.67'	0.95'	0'28"09"	0'28"09"
1+00.00	25.00'	31.74'	18.05'	8'57"07"	9'25"16"
1+25.00	25.00'	31.74'	18.05'	8'57"08"	18'22"24"
1+37.52	12.52'	15.95'	9.07'	4'28"59"	22'51"23"

Roll type curb & gutter to be constructed on the pavement on this sheet. Top of curb elevation are given for full height curb.



**Baughman** Falcon Falls 6th Addition - Phase I  
**45TH CT NORTH**  
 Sta. 0+00 to Sta. 4+00

Baughman Company, P.A. 315 Ellis St. Wichita, KS 67211 P 316-262-7271 F 316-262-0149  
 ENGINEERING | SURVEYING | PLANNING | LANDSCAPE ARCHITECTURE

PROJECT NUMBER	DESIGN AEG	DRAWN JAK
REVISIONS:	APPROVED	DATE 7/15
	SCALE Noted	SHEET

**7 OF 24**