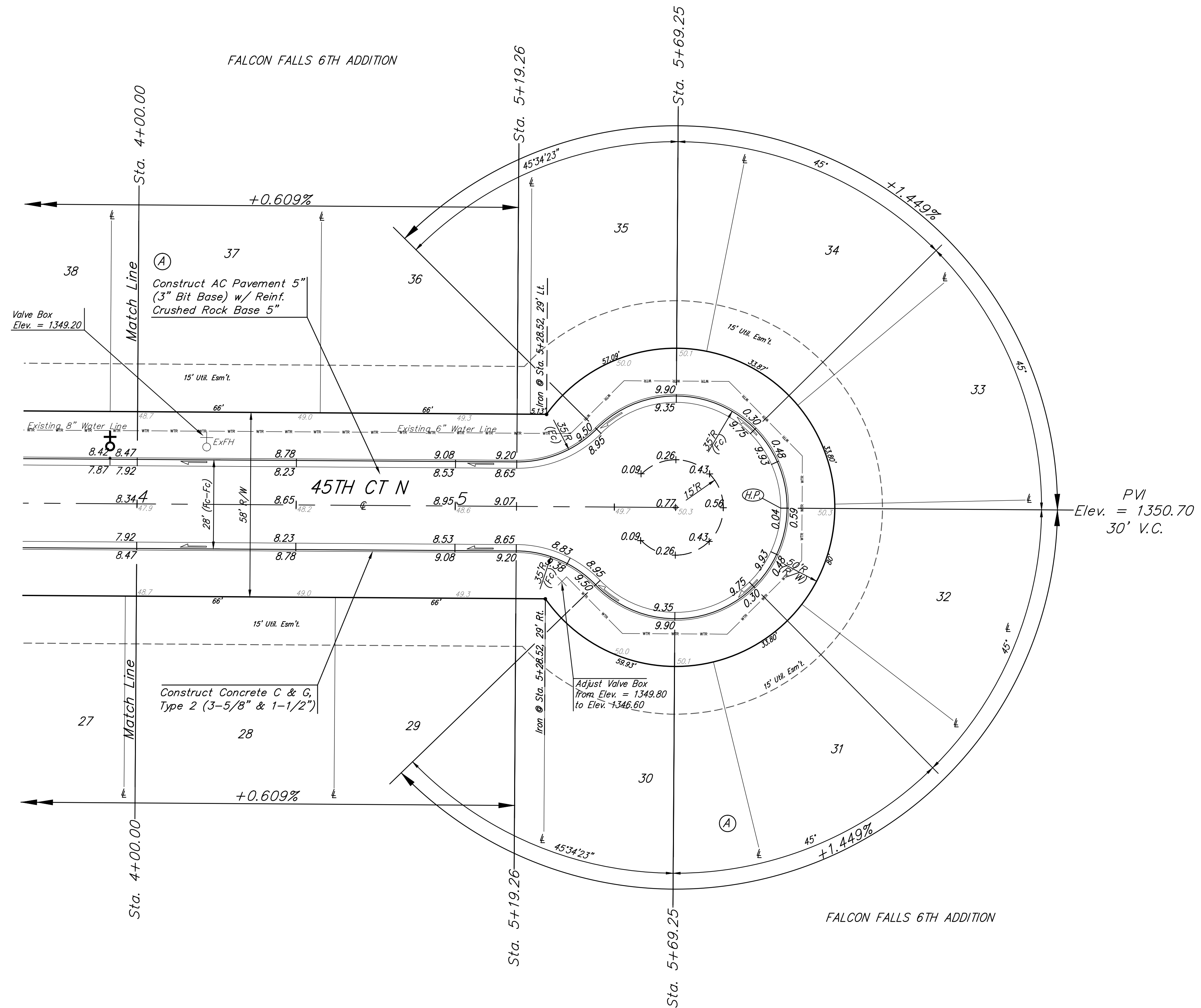
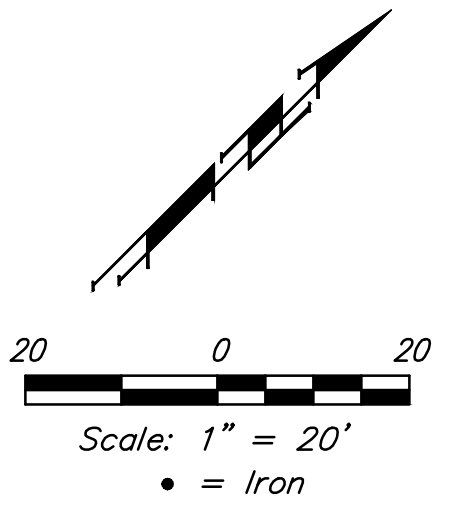


BENCHMARKS:
 Chiseled square cut on top of curb
 headwall of R.C.B.C., 31.1'
 southeast of the most southerly
 corner of Lot 1, Block A, Falcon
 Falls 5th Addition & 36.6'
 northeast of the northeast corner
 of Lot 1, Block "A", Falcon Falls
 6th Addition.
 Elev. = 1349.83 NAVD88

Chiseled square cut on top of curb
 at west end of median, 89.6'
 south-southwest of the southwest
 corner of Lot 25, Block A & 86.2'
 south-southeast of the southeast
 corner of Lot 43, Block A.
 Elev. = 1348.62 NAVD88



Subdivision Bench Marks

| Street & Station | Location Description | Elevation |
|--------------------------------|--|-----------|
| Kennedy 3+91.39, 14.25' Lt. | Adjacent to Fire Hydrant in front of Lot 37, Block A | |
| | | |

Roll type curb & gutter to
 be constructed on the pavement
 on this sheet.
 Top of curb elevation are given
 for full height curb.



| | | | |
|---|----------|-------------------------------------|--|
| Baughman | | Falcon Falls 6th Addition - Phase I | |
| | | 45TH CT NORTH | |
| | | Sta. 4+00 to Sta. 5+69.25 | |
| Baughman Company, P.A. 315 Ellis St. Wichita, KS 67211 P 316-262-7271 F 316-262-0149 ENGINEERING SURVEYING PLANNING LANDSCAPE ARCHITECTURE | | | |
| PROJECT NUMBER | DESIGN | DRAWN | |
| | AEG | JAK | |
| REVISIONS: | APPROVED | DATE | |
| | | 7/15 | |
| | SCALE | Noted | |
| | SHEET | | |
| | | 8 OF 24 | |