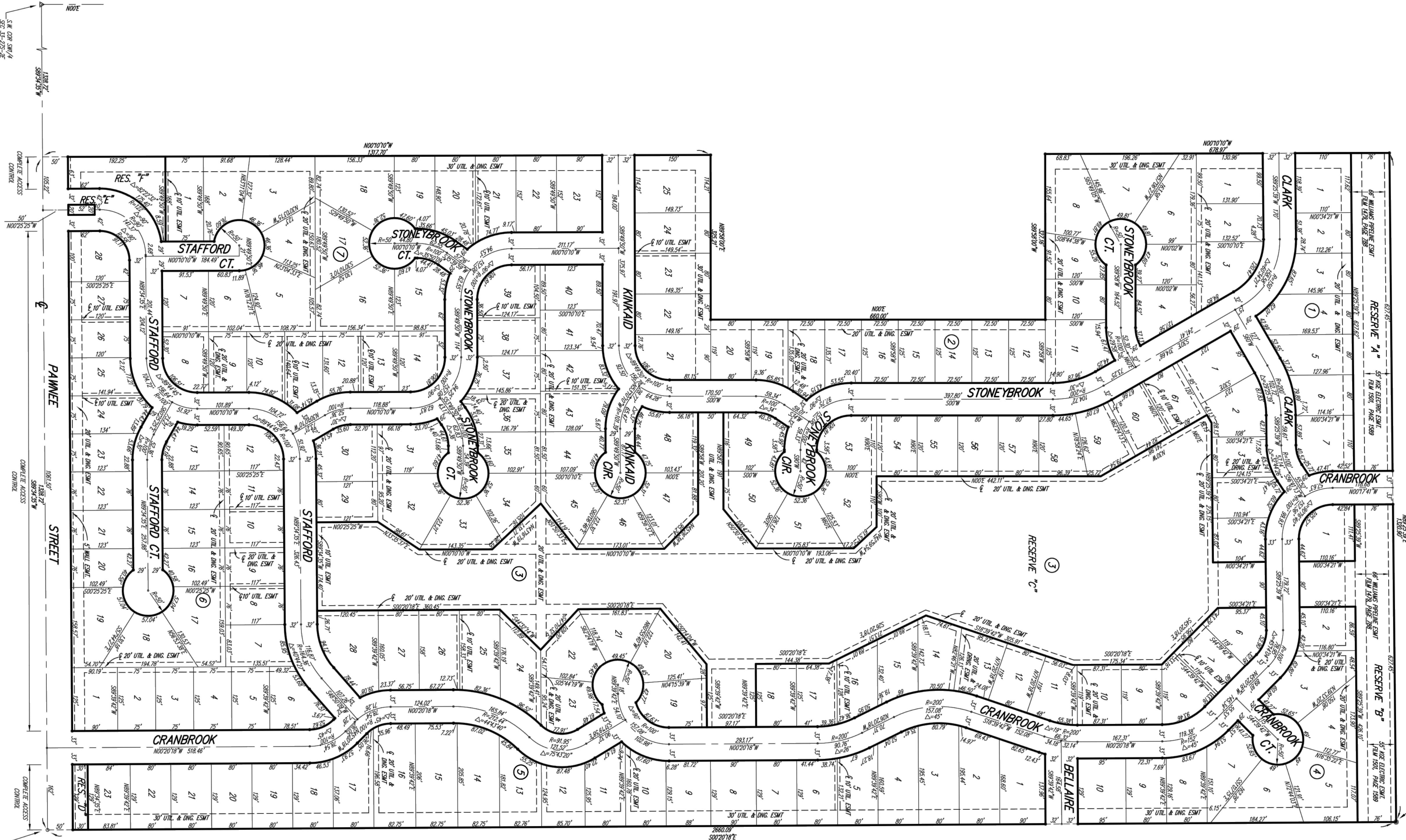
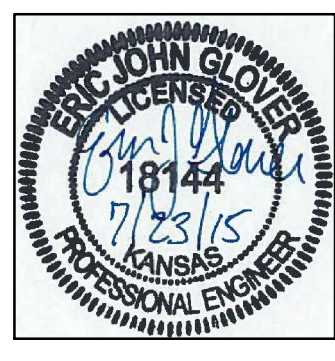


BRENTWOOD SOUTH ADDITION

WICHITA, SEDGWICK COUNTY, KANSAS



- △ = COT OF MOUND CORNER (HUBBLE FOUND)
- = 1/2" REBAR #10/8/6 (FOUND)
- = 5/8" REBAR (FOUND)
- = 1/2" REBAR #10/8/6 CAP (COT)

ANNUAL BUILDING FLD	ELEVATION FOR LOWEST OPENING AND STRUCTURES
BLCK 3	LOT NO. 1889
	ELEVATION (N.A.M.D.)
	1889

BOUNDARY: LOSS BARS 1/2" S. & 3/8" W. ELEV. = 1882.25 MTD
 BENCH MARK: COT OF MOUND CORNER (HUBBLE FOUND) N.A.M.D. = 1882.25
 20' W. & 54.5' S. OF CENTERLINE INTERSECTION ELEV. = 1879.80

Please contact Western Resources (or its successor) Electric Transmission Engineering Department (currently 785-575-8219) before conducting any proposed construction activities that could place people, equipment, or facilities within Western Resources' easement, shown on this plat, designated as Flm 1501, Page 1589, dated December 29, 1994.



SAVOY, RUGGLES & BOHM, P.A.
 ENGINEERING & SURVEYING